

- ASSEMBLE TEMPLATE/BARRIER ASSEMBLY ITEM 2 TO SIDE RAIL.
- PLACE CONNECTORS UPON TEMPLATE AND SECURE WITH ITEMS 14, 15. THIS WILL ACCURATELY LOCATE BOTH SIDES OF THE CONNECTORS. SECURE CONNECTORS INTO PLACE WITH ITEMS 4, 5, 12.
- REMOVE TEMPLATE BY CUTTING THE 2 TABS ON BARRIER AND REMOVE ITEMS 14, 15 **THE PHASE FLASH BARRIER MUST REMAIN IN PLACE,**
- DISCARD TEMPLATE WHEN DONE. **KEEP ITEMS 14, 15.**

IMPORTANT

EXTRUDED PANEL BUS INSTALLATION

INSERT "TEE" BOLTS ITEMS 3,4 IN SLOT OF EXTRUSION PER DETAIL "A". ROTATE CLOCKWISE UNTIL INDICATING MARK ON BOLT END IS IN THE HORIZONTAL POSITION AS SHOWN IN DETAIL "B".

PARTS LIST			
ITEM	QTY	PART NUMBER	TITLE
1	3	21960-14161	8-32X1/2 SOC. H.HEL. TYPE. 23
2	1	32-51-183A-001	J TYPE TEMPLATE ASSEMBLY
3	2	32-50-012A-001	PHASE A/C, J FRAME CONN ASSEMBLY
4	1	32-16-006A-004	7/8" T-BOLT 1/4-20
5	2	32-16-006A-003	1.25" TEE BOLT 1/4-20
6	2	32-14-067A-002	DOUBLE J INTERPHASE BARRIER
7	2	32-14-066A-002	SINGLE J INTERPHASE BARRIER
8	1	32-14-065A-001	H AND J FRAME 225A FLASH BARRIER
9	1	32-12-454A-001	B PHASE, J FRAME BREAKER CONNECTOR
10	1	32-10-077A-003	4.125 HALF FILLER
11	2	32-09-131A-001	H - J FRAME MOUNTING BRACKET
12	4	23427-02001	KEPS NUT , 1/4-20
13	1	445-200	1/4-20X1 HEXAGON NYLON BOLT
14	3	21601-00009	SCR_HXSC_6-32X5/16_GR8
15	3	20539-00004	M8 SERRANTED WASHER
16	1	REF. ONLY	"J" TYPE BREAKER
17	1	32-02-211A-00X	COPY OF THIS DRAWING
18	1	32-19-004A-001	PLASTIC BAG
19	3	23601-00200	1/4 FLATWASHER
20	3	23701-00200	1/4 LOCKWASHER
21	3	21514-20402	1/4-20x 1 1/4 RH.SOC.MS
22	3	HUA18306	1/4-20x 1 3/4 RH.SOC.MS

NOTE: ITEM 14 AND 15 ARE PROVIDED WITH CIRCUIT BREAKER.

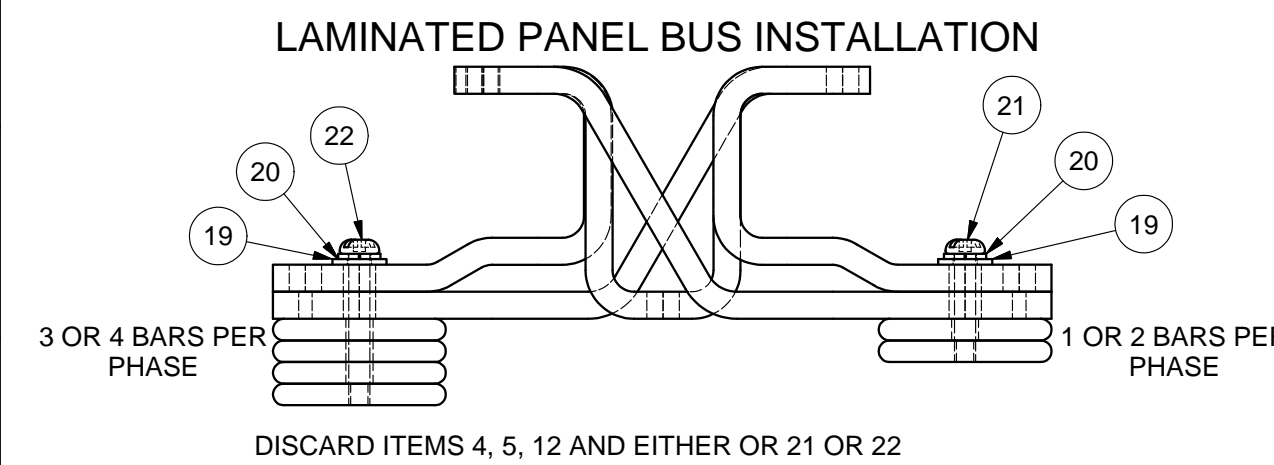
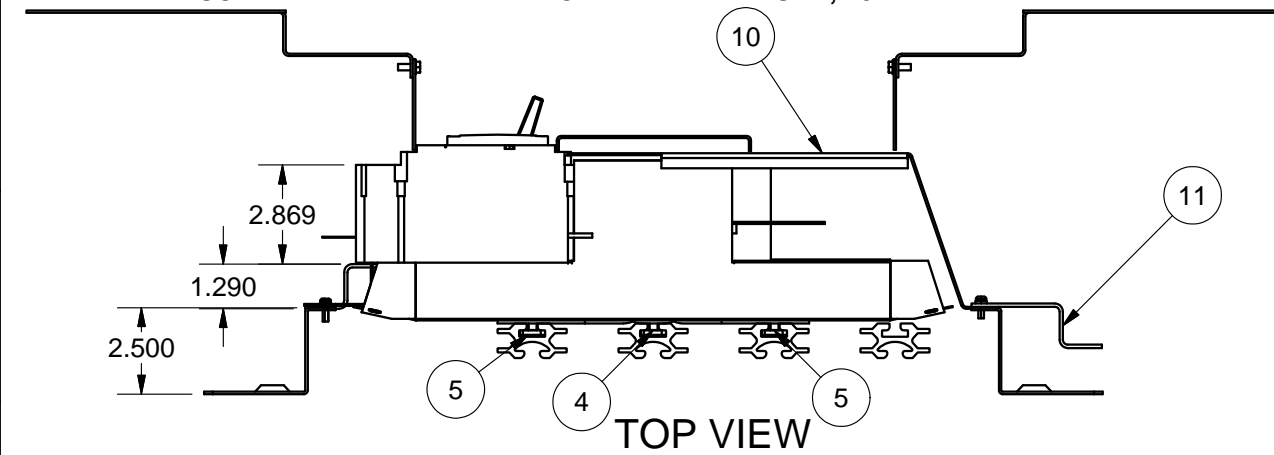
- INSTALLATION KIT CAT. NO.: **JDCMH**
- 1./ USE ONLY IN EQUIPMENT WHERE THE USE OF THIS KIT IS SPECIFIED.
 - 2./ **DE-ENERGIZE AT SOURCE BEFORE INSTALLATION.**
 - 3./ SCHNEIDER CANADA CAN NOT CONTROL THE USE OF THE ENCLOSED ITEMS. THEREFORE THE USER ASSUMES FULL RESPONSIBILITY FOR ANY INJURY OR DAMAGE RESULTING FROM IMPROPER INSTALLATION OR MISUSE.
 - 4./ RECOMMENDED TIGHTENING TORQUES:
 #8-32 --- 16 IN/LBS
 #10-32 --- 24 IN/LBS
 1/4-20 --- 50 IN/LBS
 5/16-18 --- 10-12 FT/LBS
 3/8-16 --- 20-25 FT/LBS
 1/2-13 --- 50-60 FT/LBS
 - 5./ FOR USE WITH 150 TO 225A TYPE "POWERPACT" J FRAME BREAKERS.
 - 6./ HARDWARE IS PROVIDED IN EACH KIT FOR TWIN MOUNTING OF CIRCUIT BREAKERS. BREAKERS SOLD SEPARATELY.

DANGER

HAZARD OF ELECTRIC SHOCK, EXPLOSION, OR ARC FLASH

- APPLY APPROPRIATE PERSONAL PROTECTIVE EQUIPMENT (PPE) AND FOLLOW SAFE ELECTRICAL WORK PRACTICES. SEE NFPA 70E.
- THIS EQUIPMENT MUST BE INSTALLED AND SERVICED ONLY BY QUALIFIED ELECTRICAL PERSONNEL.
- TURN OFF ALL POWER SUPPLYING THIS EQUIPMENT BEFORE WORKING ON OR INSIDE EQUIPMENT.
- ALWAYS USE A PROPERLY RATED VOLTAGE SENSING DEVICE TO CONFIRM POWER IS OFF.
- REPLACE ALL DEVICES, DOORS, AND COVERS BEFORE TURNING ON POWER TO THIS EQUIPMENT.

FAILURE TO FOLLOW THESE INSTRUCTIONS WILL RESULT IN DEATH OR SERIOUS INJURY.

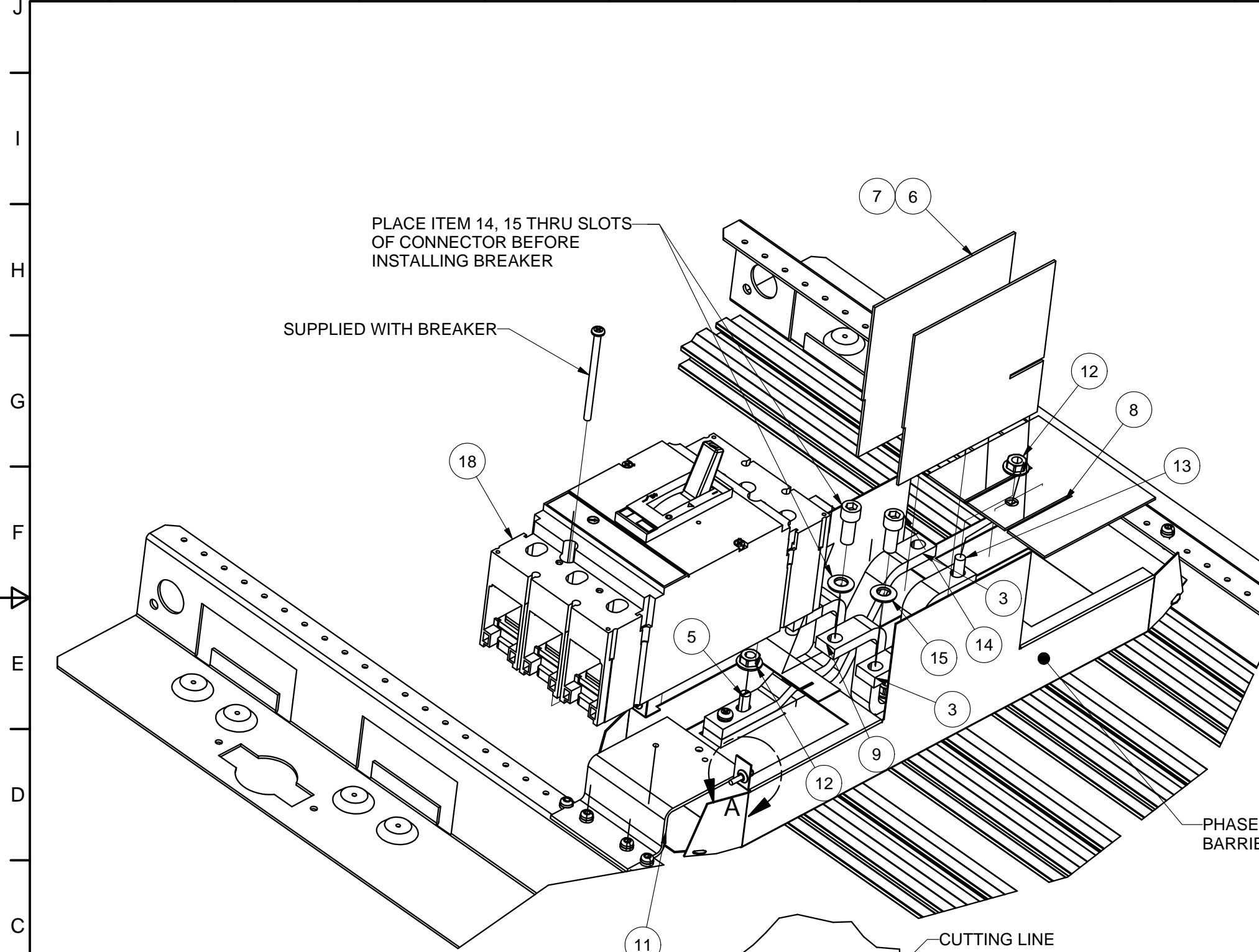


NOTE: TERMINAL NUT KIT S37445 IS INCLUDED TO ALLOW FOR FIELD CONVERSION OF "H" FRAME BREAKERS WITH LUG TERMINALS

REV.	ECO	DATE	BY	REVISION DESCRIPTION
1	TBA	21JUL2009	YB	ADDED ITEM 19 THRU 22

THIRD ANGLE	GENERAL TOLERANCE SPEC. 48050-040-01 NORMAL CLASS TOLERANCE	SQUARE D Schneider Electric
DIMENSIONS ARE IN UNLESS OTHERWISE NOTED * OR (ST) * DENOTES CRITICAL CHARACTERISTIC		MOUNTING KIT FOR 150 - 225A TYPE "J" BKR ON CDP CHASSIS
SQUARE D/SCHNEIDER ELECTRIC HAS PROPRIETARY RIGHTS TO THE INFORMATION CONTAINED HEREON. THIS INFORMATION REMAINS THE PROPERTY OF SQUARE D/SCHNEIDER ELECTRIC AND MAY BE REPRODUCED OR USED ONLY IN ACCORDANCE WITH INSTRUCTIONS OR PERMISSION FROM SQUARE D/SCHNEIDER ELECTRIC. THIS DOCUMENT SHALL BE RETURNED TO SQUARE D/SCHNEIDER ELECTRIC UPON REQUEST. USER SHOULD VERIFY DRAWINGS ARE THE MOST RECENT VERSION PRIOR TO USE. © 2004, SCHNEIDER ELECTRIC, ALL RIGHTS RESERVED.		DRW DWB CHK YB SCALE NTS DATE 23MAR2004 ECO W0560069
SIZE B	DWG NO 32-02-211a-00x	SHEET 1 OF 2

16 15 14 13 12 11 10 9 8 7 6 5 4 3 2 1

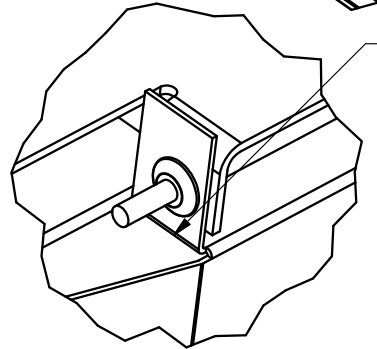


PARTS LIST			
ITEM	QTY	PART NUMBER	TITLE
1	3	21960-14161	8-32X1/2 SOC.H.HEL. TYPE. 23
2	1	32-51-183A-001	J TYPE TEMPLATE ASSEMBLY
3	2	32-50-012A-001	PHASE A/C, J FRAME CONN ASSEMBLY
4	1	32-16-006A-004	7/8" TEE BOLT 1/4-20
5	2	32-16-006A-003	1.25" TEE BOLT 1/4-20
6	2	32-14-067A-002	DOUBLE J INTERPHASE BARRIER
7	2	32-14-066A-002	SINGLE J INTERPHASE BARRIER
8	1	32-14-065A-001	H AND J FRAME 225A FLASH BARRIER
9	1	32-12-454A-001	B PHASE, J FRAME BREAKER CONNECTOR
10	1	32-10-077A-003	4.125 HALF FILLER
11	2	32-09-131A-001	H - J FRAME MOUNTING BRACKET
12	4	23427-02001	KEPS NUT , 1/4-20
13	1	445-200	1/4-20X1 HEXAGON NYLON BOLT
14	3	21601-00009	5/16-18X.75" HEX SOC
15	3	20539-00004	M8 SERRATED WASHER
16	1	REF. ONLY	"J" TYPE BREAKER
17	1	32-02-211A-00X	COPY OF THIS DRAWING
18	1	32-19-004A-001	PLASTIC BAG
19	3	23601-00200	1/4 FLATWASHER
20	3	23701-00200	1/4 LOCKWASHER
21	3	21514-20402	1/4-20x 1 1/4 RH.SOC.MS
22	3	HUA18306	1/4-20x 1 3/4 RH.SOC.MS

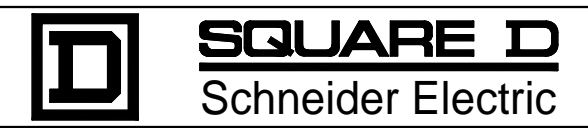
NOTE: ITEM 14 AND 15 ARE PROVIDED WITH CIRCUIT BREAKER.

- INSTALLATION KIT CAT. NO.: **JDCMH**
- 1./ USE ONLY IN EQUIPMENT WHERE THE USE OF THIS KIT IS SPECIFIED.
 - 2./ **DE-ENERGIZE AT SOURCE BEFORE INSTALLATION.**
 - 3./ SCHNEIDER CANADA CAN NOT CONTROL THE USE OF THE ENCLOSED ITEMS. THEREFORE THE USER ASSUMES FULL RESPONSIBILITY FOR ANY INJURY OR DAMAGE RESULTING FROM IMPROPER INSTALLATION OR MISUSE.
 - 4./ **RECOMMENDED TIGHTENING TORQUES:**
 - #8-32 --- 16 IN/LBS
 - #10-32 --- 24 IN/LBS
 - 1/4-20 --- 50 IN/LBS
 - 5/16-18 --- 10-12 FT/LBS
 - 3/8-16 --- 20-25 FT/LBS
 - 1/2-13 --- 50-60 FT/LBS
 - 5./ FOR USE WITH 150 TO 225A TYPE "POWERPACT" J FRAME BREAKERS.
 - 6./ HARDWARE IS PROVIDED IN EACH KIT FOR TWIN MOUNTING OF CIRCUIT BREAKERS.

TAB CUTTING DETAIL A



<p>THIRD ANGLE</p>	<p>GENERAL TOLERANCE SPEC. 48050-040-01 NORMAL CLASS TOLERANCE</p>
	<p>DIMENSIONS ARE IN UNLESS OTHERWISE NOTED * OR (ST) * DENOTES CRITICAL CHARACTERISTIC</p>
<p>SQUARE D/SCHNEIDER ELECTRIC HAS PROPRIETARY RIGHTS TO THE INFORMATION CONTAINED HEREON. THIS INFORMATION REMAINS THE PROPERTY OF SQUARE D/SCHNEIDER ELECTRIC AND MAY BE REPRODUCED OR USED ONLY IN ACCORDANCE WITH INSTRUCTIONS OR PERMISSION FROM SQUARE D/SCHNEIDER ELECTRIC. THIS DOCUMENT SHALL BE RETURNED TO SQUARE D/SCHNEIDER ELECTRIC UPON REQUEST. USER SHOULD VERIFY DRAWINGS ARE THE MOST RECENT VERSION PRIOR TO USE. © 2004, SCHNEIDER ELECTRIC, ALL RIGHTS RESERVED.</p>	
<p>SIZE B</p>	<p>DWG NO 32-02-211a-00x</p>



MOUNTING KIT FOR 150 - 225A TYPE "J" BKR ON CDP CHASSIS

DRW DWB	CHK YB	SCALE NTS
DATE 23MAR2004	ECO W0560069	SHEET 2 OF 2

REV.	ECO	DATE	BY	REVISION DESCRIPTION
1	TBA	21JUL2009	YB	ADDED ITEM 19 THRU 22

16 15 14 13 12 11 10 9 8 7 6 5 4 3 2 1

PRINTS TO: PrintsToLocations