

8 | 7 | 6 | 5 | 4 | 3 | 2 | 1

REV.	ECO	DATE	BY	REVISION DESCRIPTION

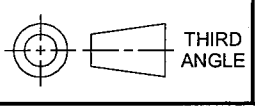
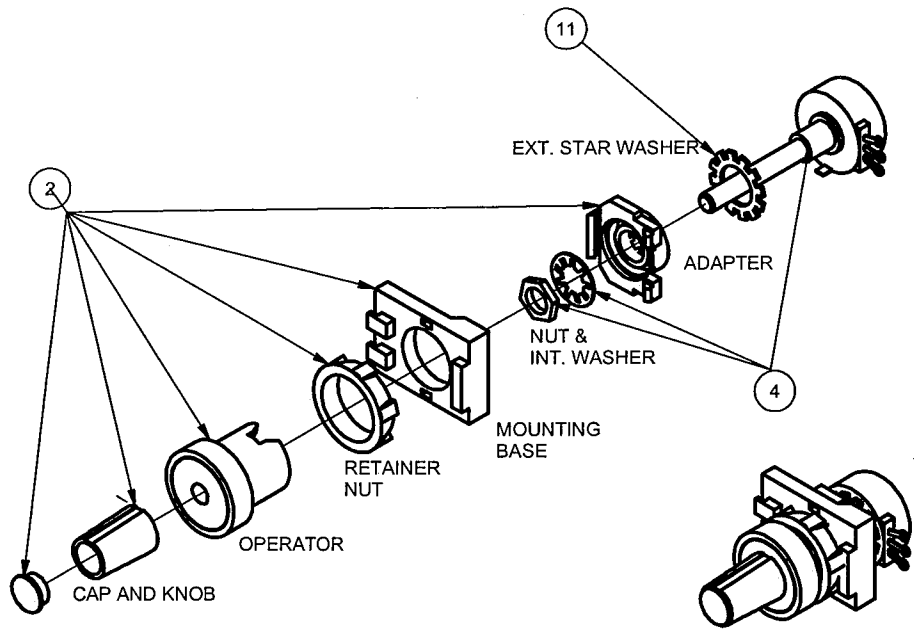
Requires a 22mm Hole.

NOTES:

1. INSTALL EXTERNAL STAR WASHER AT THE BASE OF THE POT.
2. INSTALL ADAPTER BEFORE INSTALLING INTERNAL STAR WASHER AND NUT.
3. CLIP MOUNTING BASE TO THE ADAPTER.
4. INSTALL POT-OPERATOR THROUGH A HOLE FROM THE OUTSIDE OF DOOR.
5. ADJUST OPERATOR DIRECTION BEFORE TIGHTENING RETAINER.
6. PUSH OPERATOR THROUGH BASE PASS THE RETAINING CLIPS.
7. PLACE KNOB ON THE END OF THE POT SHAFT AND TIGHTEN. ALIGN WHITE DOT ON CAP WITH WHITE STRIPE ON THE KNOB.

PARTS LIST			
QTY	PART NUMBER	TITLE	ITEM
1	W914034750211	99LABEL	1
1	zb5ad922	TE POT OPERATOR	2
1	400688	PLACTIC BAG	3
1	80442-273-02	POTENTIOMETER	4
1	323616	PACKING BOX	7
1	52010-583-01	POT KITT LABEL	8
1	65170-170-09	LEGEND PLATE	9
1	ZBZ32	LEGEND PLATE HOLDER	10
1	23703-00280	WSH_EXT1/2_520IDX.890STL	11

ITEMS 1,3,6,7,8,9,& 10 ARE NOT SHOWN.



GENERAL TOLERANCE SPEC.
NORMAL CLASS TOLERANCE



SQUARE D
Schneider Electric

DIMENSIONS ARE IN INCHES UNLESS OTHERWISE NOTED
* OR (S) * DENOTES CRITICAL CHARACTERISTIC

POTENTIOMETER KIT

SQUARE D/SCHNEIDER ELECTRIC HAS PROPRIETARY RIGHTS TO THE INFORMATION CONTAINED HEREON. THIS INFORMATION REMAINS THE PROPERTY OF SQUARE D/ SCHNEIDER ELECTRIC AND MAY BE REPRODUCED OR USED ONLY IN ACCORDANCE WITH INSTRUCTIONS OR PERMISSION FROM SQUARE D/SCHNEIDER ELECTRIC. THIS DOCUMENT SHALL BE RETURNED TO SQUARE D/SCHNEIDER ELECTRIC UPON REQUEST. USER SHOULD VERIFY DRAWINGS ARE THE MOST RECENT VERSION PRIOR TO USE.
© 2004, SCHNEIDER ELECTRIC, ALL RIGHTS RESERVED.

DRW JCL	CHK KAS	SCALE NTS
DATE 6 OCT 2004	ECO 04J0007	

SIZE **A** DWG NO **atvpot25k**

SHEET 1 OF 1

8 | 7 | 6 | 5 | 4 | 3 | 2 | 1

PRINTS TO: