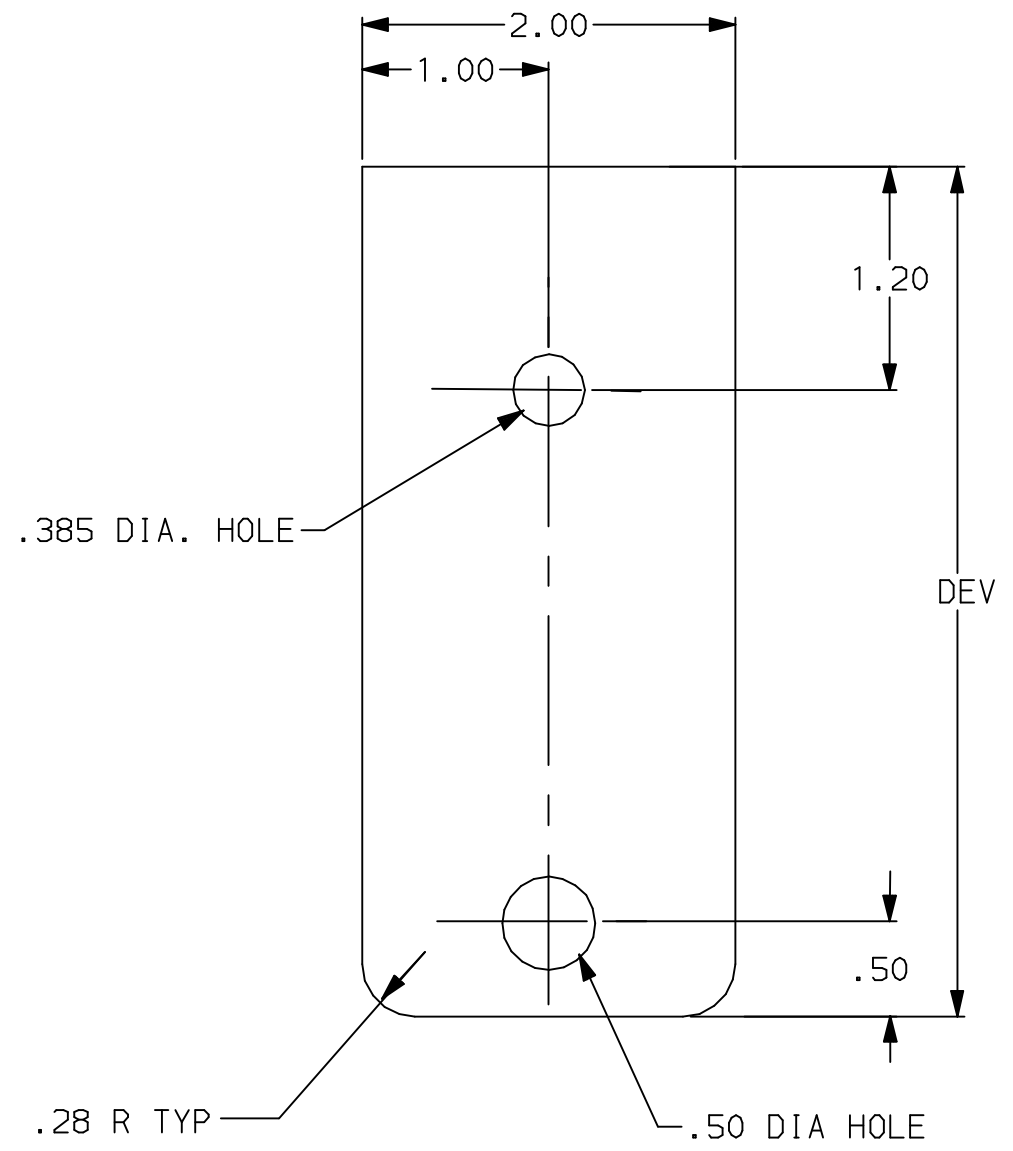
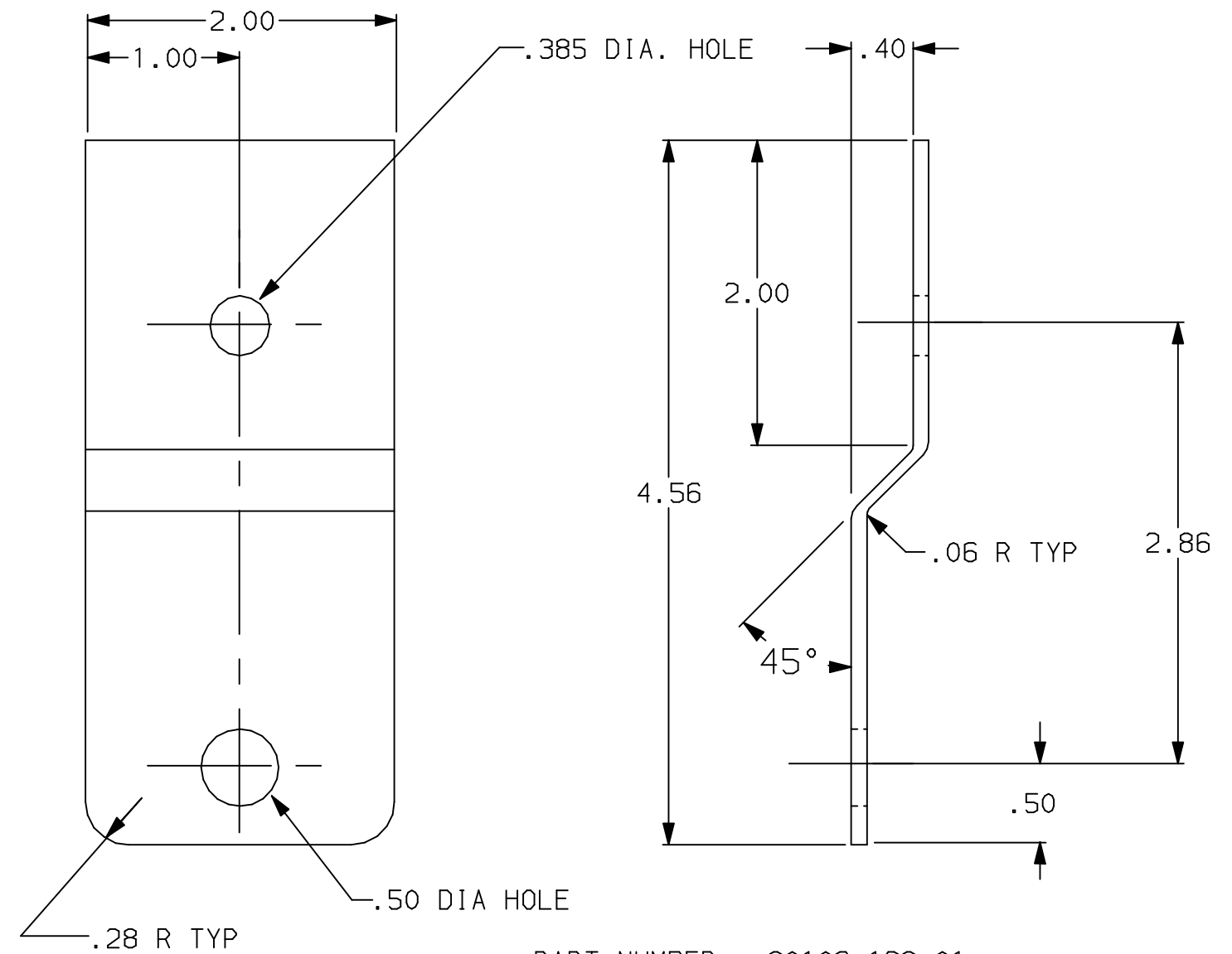


A B C D E F G H I J K L M N O P



BLANK VIEW
NOT A PROJECTION



PART NUMBER: 80106-138-01

NOTE: TUMBLE PARTS TO REMOVE BURRS



MATERIAL: .093 +.010 OR -.000 THICK, GALVANIZED
G60 MINIMUM COATING, OILED
PER ASTM A653, (REF. 1105-_____)

FINISH: NONE

CURRENT REVISION DESCRIPTION		REVISION LEDGER				DO NOT SCALE - WORK TO DIMENSIONS			PRINTS TO: PB . .		B 80106 138 01			
D ₁ CHANGED GALV. COATING FROM G30 TO G60.	REV	ECO	DATE	BY	CHKD	STANDARD TOLERANCE UNLESS OTHERWISE SPECIFIED	LINEAR DIMENSION	ONE PLACE DECIMAL ±.060 TWO PLACE DECIMAL ±.030 THREE PLACE DECIMAL ±.005	ECO	DATE	BY	CHKD	CAD SETTING	
	C	9700943	7-15-97	TMW	HGT		HOLE DIAMETER	TWO PLACE DECIMAL ±.010 THREE PLACE DECIMAL ±.002	9500556	7-3-95	JDM	DKL	1:1	SHEET 1 OF 1
	D	P020120	8OCT2002	KWB	JLS		ANGLE	DIMENSIONED ± 1° UNDIMENSIONED 90° ± 2°	TITLE WP ENCL MTG FOOT					
PROPRIETARY DOCUMENT PROPERTY OF SQUARE D COMPANY. NOT TO BE REPRODUCED BY ANY MEANS OR USED TO FURNISH INFORMATION TO OTHERS WITHOUT THE EXPLICIT CONSENT OF SQUARE D COMPANY. ALL RIGHTS RESERVED. © 1994, SQUARE D COMPANY						USED ON HC, MH & QMB WP ENCLOSURES								

80106 138 01