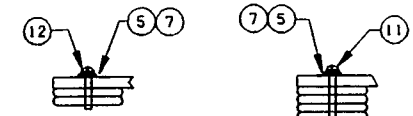


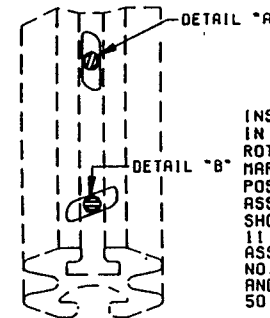
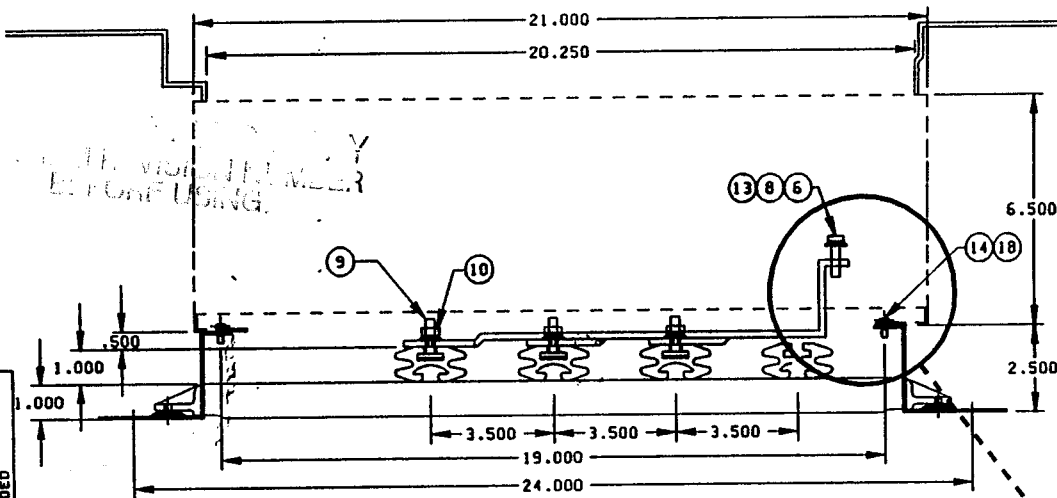
ITEM	QTY	PART NO.	DESCRIPTION
1			FPE 200A OMOB UNIT
2	1	32.12.150A.003	LINE SIDE CONNECTOR-AØ
3	1	32.12.150A.002	LINE SIDE CONNECTOR-BØ
4	1	32.12.150A.001	LINE SIDE CONNECTOR-CØ
5	6		
6	6	23601-00200	1/4" FLATWASHER
7	6		
8	6	23701-00200	1/4" SPLIT LOCKWASHER
9	6	32.16.006A.001	TEE BOLT 1 LONG
10	6	23427-02001	1/4-20 BELLV. WASHERED NUT
11	6	21507-20480	1/4-20X1.1/2 R.H.SOC.AS.
12	6	3201SJ1	1/4-20X1 R.H.SOC.AS.
13	6	32045J5/8	1/4-20X5/8 PAN COMBIN.AS
14	4	85216J1/2	8-32X1/2 R.H.SOC.HEX SEMS
15	1	32.02.082A	COPY OF THIS DRAWING
16	1	32.19.004A.001	PASTIC BAG
17	1	32.10.121A.001	TEMPLATE
18	4	23601-00140	#8 FLATWASHER
19	1	32.19.003	PACKING CARTON

LAMINATED PANEL BUS INSTALLATION



1 OR 2 BARS PER PHASE 3 OR 4 BARS PER PHASE
 DISCARD ITEMS 9, 10 AND EITHER 11 OR 12

EXTRUDED PANEL BUS INSTALLATION



IMPORTANT

INSERT 'TEE' BOLTS ITEM NO.9 IN SLOT OF EXTRUSION PER DETAIL 'A'. ROTATE CLOCKWISE UNTIL INDICATING MARK ON BOLT END IS IN THE HORIZONTAL POSITION AS SHOWN IN DETAIL 'B'. ASSEMBLE CONNECTORS AND HARDWARE AS SHOWN. DISCARD ITEMS NO. 6, 8, 11 AND 12. ASSEMBLE TEE BOLTS AND NUTS ITEMS NO. 9 AND 10 LOOSELY THRU' CONNECTORS AND ASSEMBLE AS AN UNIT. TORQUE TO 50 IN/LBS.

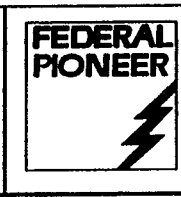
ASSEMBLE TEMPLATE TO SIDE RAIL. ASSEMBLE CONNECTORS TO TEMPLATE. THIS WILL ACCURATELY LOCATE BUS BAR TO CONNECTOR CONNECTION. REMOVE TEMPLATE AND DISCARD.

ECO	DATE	ISSUE BY	DESCRIPTION
1256	NOV-91	01	NEW ASSEMBLY
1924	JAN 95	02	ORL ITEMS 2.3.4 WERE 21-6328-1.2.3
2016	MAR 95	03	ORL ITEMS 2.3.4 WERE 32.12.148A
3074	OCT 95	04	DI RECOMMENDED TORQUES WERE 18-20 FOR 3/8 AND 40-50 FOR 1/2
4247	NOV-96	05	PS REF TO SERIES W94 ADDED ITEM 16 HAS PART 22-049A-3 ITEM 15 ADDED

- INSTALLATION KIT CAT NO.: **OMOB200CMH**
- USE ONLY IN EQUIPMENT WHERE THE USE OF THIS KIT IS SPECIFIED.
 - DE-ENERGIZE AT SOURCE BEFORE INSTALLATION.**
 - F.P.E. CANNOT CONTROL THE USE OF THE ENCLOSED ITEMS. THEREFORE THE USER ASSUMES FULL RESPONSIBILITY FOR ANY INJURY OR DAMAGE RESULTING FROM IMPROPER INSTALLATION OR OTHER MISUSE.
 - ENSURE PROPER PHASE TO PHASE AIR GAP AFTER INSTALLATION 240V-3/4" 480V-1" 600V-1"
 - RECOMMENDED TIGHTENING TORQUES:
 #8-32...16 IN/LBS
 #10-32...24 IN/LBS
 1/4-20...50 IN/LBS
 5/16-18...10-12 FT/LBS
 3/8-16...20-25 FT/LBS
 1/2-13...50-60 FT/LBS
 - FOR USE WITH 200A "OMOB" SERIES W94 FEEDER UNITS.

ASSEMBLED ON	
OMOB200CMH	
SCALE	NTS
DRAWN	BCW DATE NOV-91
CHECKED	GS DATE NOV-91
APP.	GS DATE NOV-91

LOCATION OF ORIGIN
BRAMALEA



TITLE	
200A OMOB SERIES W94 FEEDER UNIT MOUNTING DETAIL ON "OMOB" CHASSIS	
DRAWING No.	ISSUE No.
32.02.082A	05