


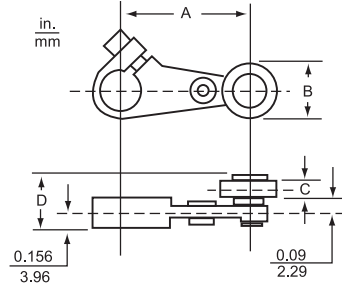
Lever Arms for 9007AW and 9007C Heavy Duty / Industrial Limit Switches

Standard roller is hardened oil-impregnated sintered iron. Bold-face Type numbers indicate the most commonly used lever arms.

Table 21.58: Cast Zinc Lever Arms

Cast Lever Arm	Length of Arm (A)	Roller							
		Standard 3/4" Dia. (B) 1/4" Wide (C)	Standard 3/4" Dia. (B) 5/8" Wide (C)	Standard 5/8" Dia. (B) 1/4" Wide (C)	Standard 5/8" Dia. (B) 5/8" Wide (C)	Nylon 3/4" Dia. (B) 1/4" Wide (C)	Nylon 5/8" Dia. (B) 1/4" Wide (C)	Nylon 5/8" Dia. (B) 5/8" Wide (C)	Nylon [8] 1" Dia. (B) 5/8" Wide (C)
	7/8"	—	—	—	—	—	—	—	—
	1-3/8"	BA11	BA12	BA1	BA2	BA18	BA8	BA17	BA13
	1-1/2"	MA11	MA12	MA1	MA2	MA18	MA8	MA17	MA13
	2"	CA11	CA12	CA1	CA2	CA18	CA8	CA17	CA13
	2-1/2"	DA11	DA12	DA1	DA2	DA18	DA8	DA17	DA13
	3"	EA11	EA12	EA1	EA2	EA18	EA8	EA17	EA13
Length of Arm (A)		Nylon 1" Dia. (B) 1/4" Wide (C)	Ball Bearing 1 1/16" Dia. (B) 1/4" Wide (C)	Standard 3/4" Dia. (B) 1/4" Wide (C) Roller on Opposite Side to Standard	Standard 5/8" Dia. (B) 1/4" Wide (C) Roller on Opposite Side to Standard	Standard 5/8" Dia. (B) 5/8" Wide (C) Roller on Opposite Side to Standard	Without Roller	Standard 3/4" Dia. (B) 1/4" Wide (C) (Countersunk Roller Pin)	Cable Operated With Eyebolt (3/8" I.D.) Instead of Roller
	7/8"	—	AA9	—	AA5	AA6	AA0	—	—
	1-3/8"	BA4	BA9	BA15	BA5	BA6	BA0	—	—
	1-1/2"	MA4	MA9	MA15	MA5	MA6	MA0	MA31	MA22
	2"	CA4	CA9	CA15	CA5	CA6	CA0	CA31	—
	2-1/2"	DA4	DA9	DA15	DA5	DA6	DA0	DA31	—
3"	EA4	EA9	EA15	EA5	EA6	EA0	—	—	

Cast Zinc Lever Arm Dimensions



A = Length of Lever Arm
B = Roller Diameter
C = Roller Width
D = C + 5/16"

See the tables in this topic for A, B, and C dimensions.

Table 21.59: Flat Steel Lever Arms



Flat Steel Lever Arm	Length of Arm (A)	Standard Roller 5/8" Dia. (B) 1/4" Wide (C)	Standard Roller 5/8" Dia. (B) 5/8" Wide (C)	Nylon Roller 3/4" Dia. (B) 1/4" Wide (C)	Nylon Roller 1" Dia. (B) 1/4" Wide (C)	No Roller
		Type	Type	Type	Type	Type
	7/8"	AA1S	AA2S	—	—	AA0S
	1-3/8"	BA1S	BA2S	—	BA4S	BA0S
	1-1/2"	—	—	MA18S	—	—
	2"	CA1S	CA2S	—	CA4S	CA0S
	2-1/2"	DA1S	DA2S	—	DA4S	DA0S
	3"	EA1S	EA2S	—	EA4S	EA0S

Table 21.60: 90° Forked Cast Zinc Lever Arms

90° Forked Arm 1-1/2" Length	Roller Position	Standard Rollers 3/4" Dia. (B) 1/4" Wide (C)	Standard Rollers 5/8" Dia. (B) 1/4" Wide (C)	Nylon Rollers 3/4" Dia. (B) 1/4" Wide (C)	Nylon Rollers 3/4" Dia. (B) 1" Wide (C)	Ball Bearing Rollers 1 1/16" Dia. (B) 1/4" Wide (C)
		Type	Type	Type	Type	Type
	Rollers on Same Side	LA4	LA1	LA16	LA10	LA7
	R.H. Roller on Opposite Side	LA5	LA2	LA17	LA11	LA8
	L.H. Roller on Opposite Side	LA6	LA3	LA18	LA12	LA9

Approximate shipping weights range from 1/8 to 1/4 lb.

Table 21.61: One-Way Cast Zinc Roller Lever Arm


One-Way Roller Lever Arm	Length of Arm	Roller, 1-1/4" Dia. (B) 1/4" Wide (C)	
		Cast Arm Type	Flat Steel Arm Type
	1-3/8"	BA3	BA3S
	1-1/2"	MA3	—
	2"	CA3	CA3S
	2-1/2"	DA3	DA3S
	3"	EA3	EA3S
	—	—	—

Table 21.62: Offset-style Cast Zinc Lever Arms


Offset Lever Arm	Dia. (B)	Width (C)	Type
2" Length 7/16" Offset	5/8	1/4	KA1
	5/8	5/8	KA2
	3/4	1/4	KA11
	3/4	5/8	KA12
	11/16		Ball Bearing KA9
	Nylon		
	3/4	1/4	KA18
	3/4	1	KA21
1-1/2" Length 7/8" Offset	3/4	1/4	KB11
	3/4	1/4	KB15 [9]

Table 21.63: One-Way Lever Arms


One-Way Lever Arm	Length of Arm	Roller			Rod Type
		Standard 3/4" Dia. (B) 1/4" Wide (C)	Nylon 3/4" Dia. (B) 1/4" Wide (C)	Ball Bearing 1-1/16" Dia. (B) 1/4" Wide (C)	
		Type	Type	Type	
	1-1/2"	RA11	RA18	RA9	—
	5"	—	—	—	FA2

Table 21.64: Rod Type Lever Arms

Rod, in. (mm)	Type
10 (254) Stainless Steel Rod	FA1
12 (304) Spring Rod, Steel	FA3
18 (304) Spring Rod, Steel	FA4
12 Spring Rod, Delrin	FA5
Looped Delrin Rod	FA6
90° Forked Rod	LA19
2-1/2" Spring Rods, Steel	—

Dimensions page 21-35
For more information on LA19, refer to catalog 9006CT1007.

[8] Recommended in place of Types BA7, CA7, DA7, EA7 and MA7 lever arms with steel rollers. If necessary, the latter arms can be furnished at an additional cost.
[9] Roller inside.

Lever Arms

Standard roller is hardened oil-impregnated sintered iron.
Bold-face Type numbers indicate the most commonly used lever arms.

Table 21.65: Adjustable Length Lever Arms

Description	Lever Arm, Length Adjustable from 7/8" to 4"								
	Without Roller	Roller							
		Standard 5/8" Dia. 1/4" Wide	Standard 5/8" Dia. 5/8" Wide	Nylon 5/8" Dia. 1/4" Wide	Ball Brg. 11/16" Dia. 1/4" Wide	Nylon [10] 1" Dia. 5/8" Wide	Delrin 1-5/8" Dia. 1/4" Wide	Nylon 2" Dia. 1/4" Wide	Rubber Tire 2-1/8" Dia. 1/2" Wide
Type	Type	Type	Type	Type	Type	Type	Type	Type	
Non-bendable	HA0	HA1	HA2	HA4	HA24	HA22	—	—	—
Bendable	HA9	HA5	HA6	HA8	HA25	HA23	HA20	HA26	HA21

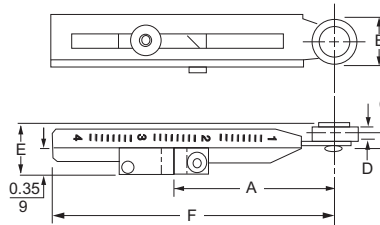
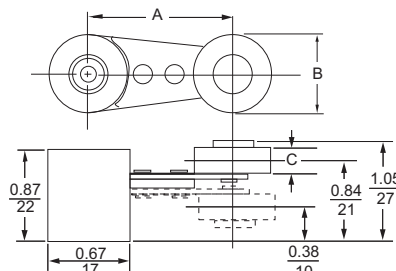


Table 21.66: 360° Angular Adjustable Lever Arms

Length of Arm	Standard 5/8" Dia. 1/4" Wide	Standard 3/4" Dia. 1/4" Wide	Nylon 5/8" Dia. 1/4" Wide	Nylon 3/4" Dia. 1/4" Wide	Ball Bearing 11/16" Dia. 1/4" Wide
	Roller Outside	Roller Inside	Roller Outside		Roller Outside
	Type	Type	Type	Type	Type
7/8"	AA1M	AA5M	AA11M	AA8M	AA18M
1-3/8"	BA1M	BA5M	BA11M	BA8M	BA18M
1-1/2"	MA1M	MA5M	MA11M	MA8M	MA18M
2"	CA1M	CA5M	CA11M	CA8M	CA18M
2-1/2"	DA1M	DA5M	DA11M	DA8M	DA18M
3"	EA1M	EA5M	EA11M	EA8M	EA18M



A = Length of Lever Arm
B = Roller Diameter
C = Roller Width

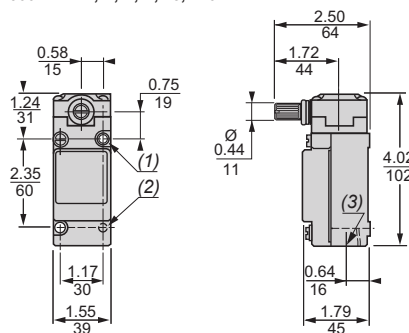
NOTE: Roller can be changed in the field from roller outside to roller inside position or vice versa.
Approximate shipping weights range from 1/8 to 1/4 lb.

Special Features

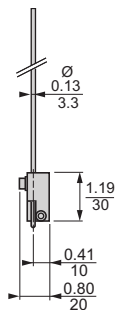
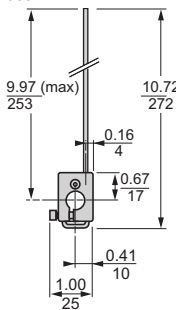
Table 21.67: Special Features (do not apply to Type CR unless noted)—Field Installable

Description	Part Number
Conduit Seal Only Conduit seal fits in conduit entrance and excludes liquids	5 hole seal 9 hole seal 3103248801 3103281501
Adapters Switch with adapter plate permitting substitution of any Type C switch with standard box for any Type T switch with Style B baseplate	Form Y147
Adapter plate kit only (plate plus mounting screws) for above	Class 9007 Type BT1
Adapter plate to allow direct substitution of Type C plunger switches for Type B plug-in plunger switches— use only if there is a problem in lining up cam tracks	Standard Box Compact Box Class 9007 Type CT10 [11] Type CT13 [12]
Adapter plate kit permitting direct substitution of any Type C lever arm switch with standard box for ANY Type AW lever arm switch	Class 9007 Type CT11
Metric conduit-connection adapter—male 1/2" NPT on one end, female 20 mm on the other end	Class 9007 Type CT12

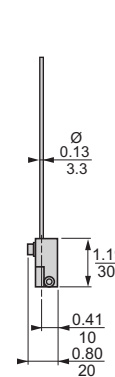
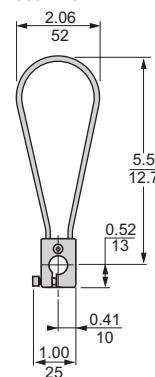
Rotary lever arms
9007C*** A, B, C, N, T5, T10



Rod type lever arms
9007FA1



9007FA9



Dual dimensions:
in. / mm

- 2 x 0.20/5 x 0.22/6 HLS.
- 2 x 10-24 Tapped HLS Back Mtg 0.29/7 DP.
- 1/2 14 NPT.

[10] Recommended in place of Types HA3 and HA7 lever arms with steel rollers. If necessary these arms can be furnished at an additional cost.

[11] Dimensions: 0.22 x 2.94 x 1.54 in.

[12] Dimensions: 0.22 x 2.07 x 1.54 in.