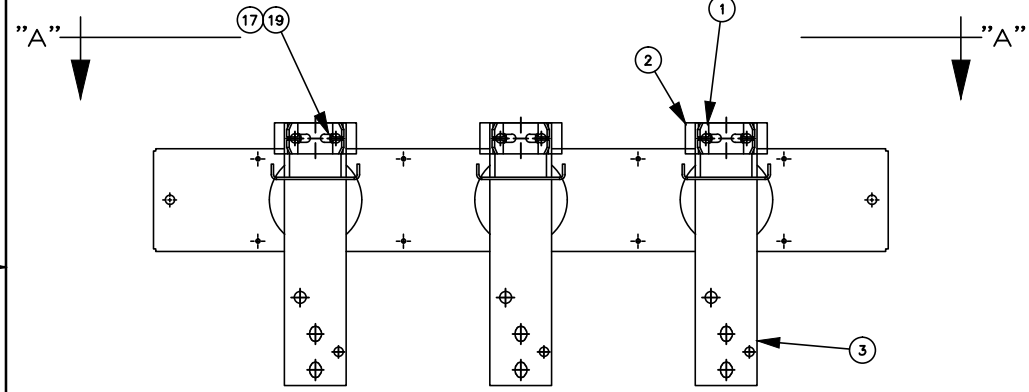
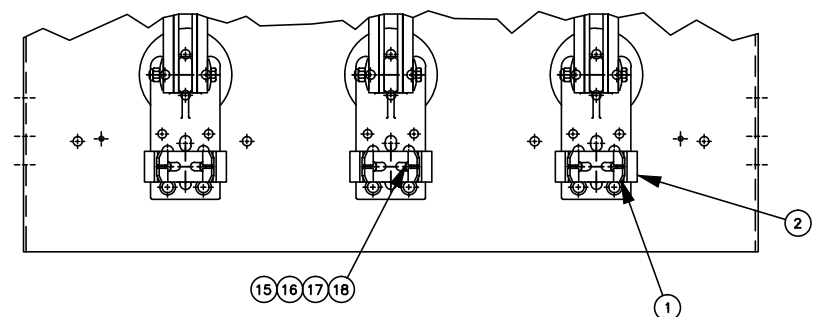


REV	ECO	BY	DATE	C	9600185	RNB	02/14/96								
A	H1689	JWD	03/07/94	D	0000386	LDB	10/12/00								
B	9500902	RNB	10/13/95	E	A367641	JRM	4/16/2015								

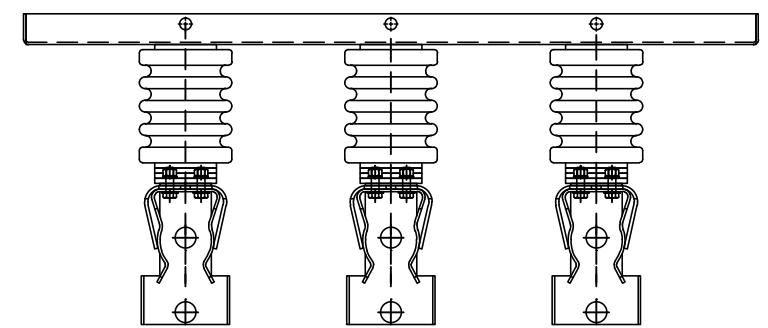
This engineering drawing (CAD / CAM or otherwise) is the proprietary property of Square D Company, not part of the public domain, and is issued with the express understanding and agreement that it is not to be reproduced or copied in whole or in part or used for furnishing information to others, or used directly or indirectly, in any way detrimental to the interest of Square D Company and is to be returned upon request by Square D Company. All Rights Reserved.

© 1989 Square D Company

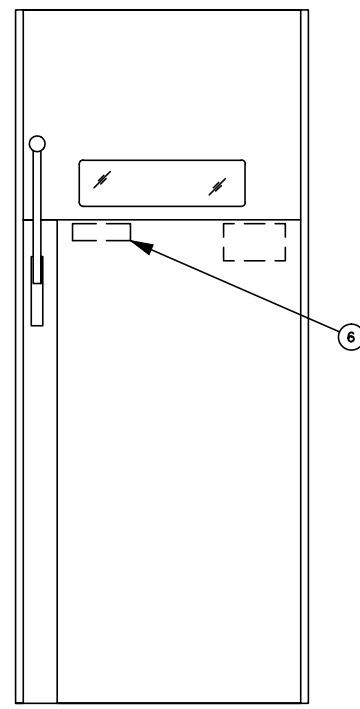
NOTE: ASSEMBLIES SHOWN WITH PORCELAIN INSULATORS.



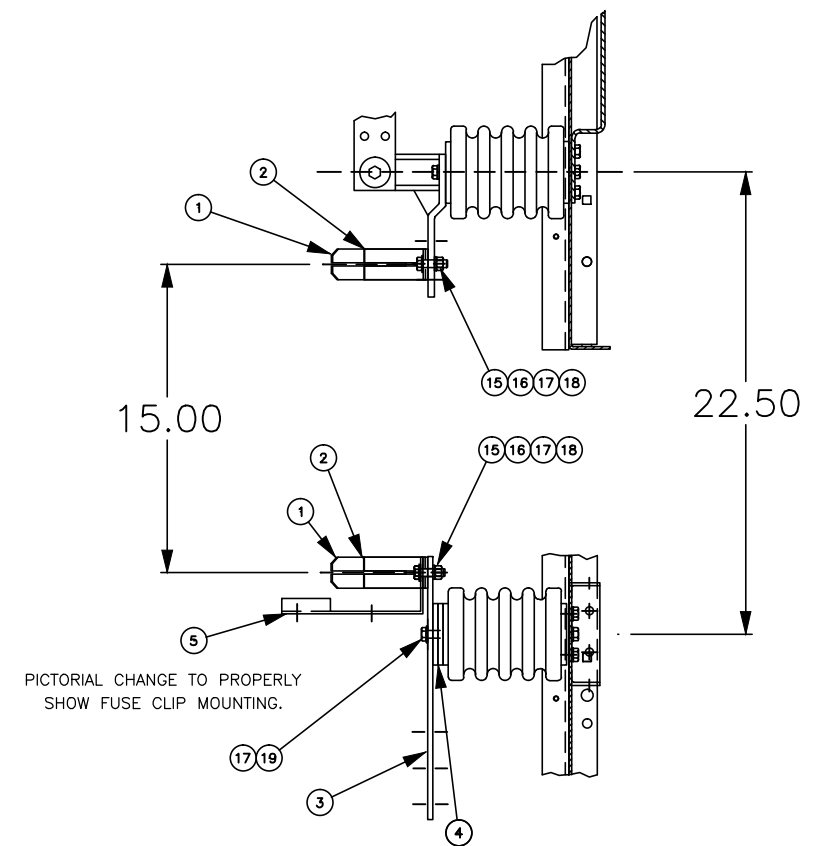
FRONT VIEW



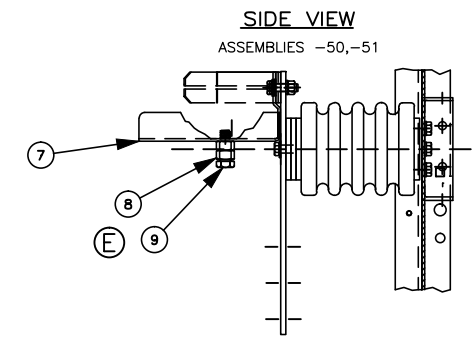
TOP VIEW "A-A"



* USE LOCATOR NIBS TO FACILITATE THE MOUNTING OF LABELS ON INNER DOOR.

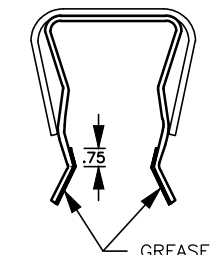


PICTORIAL CHANGE TO PROPERLY SHOW FUSE CLIP MOUNTING.



SIDE VIEW ASSEMBLIES -50,-51

SIDE VIEW ASSEMBLIES -52,-53



NOTE: GREASE - MOBILUX EP1 APPLY MINIMAL FILM TO FUSE CLIPS WITH GREASED CLOTH AT FINAL ASSEMBLY

GO	CS3	10E - 50E
GE	EJ0-1	50E - 200E

44037-240-50	SI/CU	W/O FUSELOGIC
44037-240-51	TI/CU	W/O FUSELOGIC
44037-240-52	SI/CU	W/FUSELOGIC
44037-240-53	TI/CU	W/FUSELOGIC

STANDARD TOLERANCE UNLESS OTHERWISE SPECIFIED	LINEAR DIMENSIONS	ONE PLACE DECIMAL ± .060	DESIGN LOC: 17	USED ON: SEE AMAPS	ECO: H1045	PRINTS TO: -- -- -- -- -- -- -- --	SQUARE D COMPANY POWER EQUIPMENT	REV	
		TWO PLACE DECIMAL ± .030	DRAWN BY: MCH	RAWSTOCK: ----	DATE: 10/02/92	TITLE: 15.0KV GO CS3,GE EJ0-1 CLIP ASSY			
		THREE PLACE DECIMAL ± .015	CHKD BY: ----	MATERIAL DESCRIPTION: ----	SCALE: 1 / 8	PART# SEE TABLE			QTY: -
	HOLE DIMENSIONS	PUNCHED/DRILLED ± .005	ENGINEER: ----	FINISH DESCRIPTION: ----					
	ANGLES	DIMENSIONED ± 1° UNDIMENSIONED 90° ± 2°					B	44037-240	E

SCALE: 8.00