



DATA SHEET

MODEL

M572

M573

M574

PISTON DAMPER ACTUATORS 2-, 3-, AND 4-INCH STROKES

GENERAL DESCRIPTION

The M570-series piston damper actuators are used in pneumatic control systems to position automatic air dampers upon receipt of an air pressure signal from a control device. The piston actuator can be used for either gradual action or 2-position action applications.

Standard mounting is with right-angle bracket supplied; special mounting brackets are available for use in unit ventilators, fan coil units, and terminal boxes. The M573 and M574 models are optionally available with post mounting, and are also available with positive positioning relay.



SPECIFICATIONS

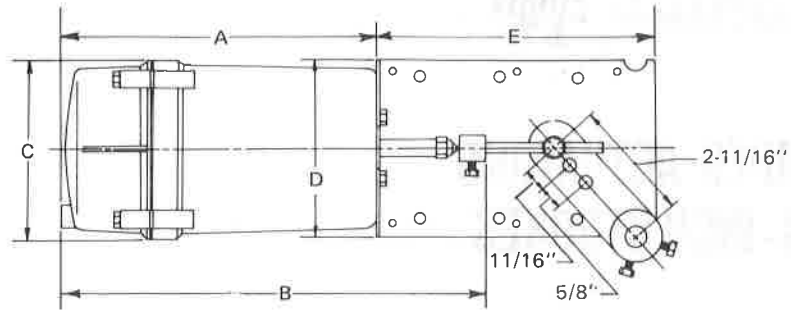
MODEL	M572	M573	M574
EFFECTIVE PISTON AREA:	3 in ² (19 cm ²)	7 in ² (45 cm ²)	11 in ² (71 cm ²)
NORMAL STROKE:	2" (51 mm)	3" (76 mm)	4" (102 mm)
MAXIMUM DAMPER AREA (@ 1000 FPM)	3 ft ² (0.28 m ²)	12 ft ² (1.1 m ²)	25 ft ² (2.3 m ²)
	Gradual operation: Two-position:	4.5 ft ² (0.42 m ²)	15 ft ² (1.4 m ²)
AVAILABLE SPRING RANGES:	3-12, 4-8, 5-10, 8-13, 10-15 psig (21-82, 28-55, 35-70, 55-90, 70-105 kPa)		
NORMAL AIR PRESSURE:	0-20 psig (0-138 kPa)		
MAXIMUM AIR PRESSURE:	30 psig (207 kPa)		
AMBIENT TEMPERATURE RATING:	-20°F to 140°F (-29°C to 60°C)		
DIAPHRAGM:	Rolling Type		
AIR CONNECTIONS:	3/16" DIA Nipple for 1/2" (6.35 mm) OD tubing		
DIMENSIONS:	See dimensional drawings on reverse		
POSITIVE POSITIONING RELAY	Not available on M572	20 psig (138 kPa)	
Normal main air pressure:		30 psig (207 kPa)	
Maximum pressure:		3-13 psig (21-90 kPa)	
Start point; adjustable Throttling range; fixed		5 psig (35 kPa) standard 10 psig (69 kPa) optional	

MOUNTING

If possible, damper actuators should be mounted on the outside of a duct or air handling unit, as this type of mounting arrangement offers such advantages as ease of installation, ease of access for service, and isolation from internal duct conditions of heating, cooling, and humidification.

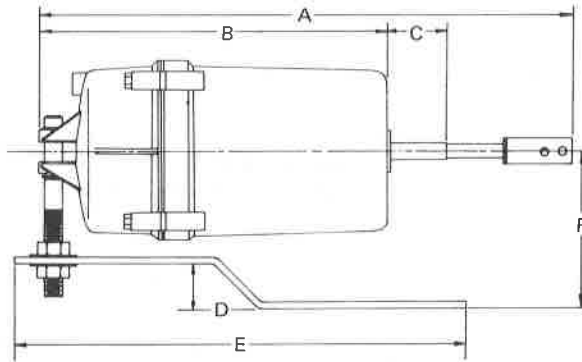
The angle bracket actuator requires no additional mounting devices. Position the angle bracket so that one of the two cutouts in the front is adjacent to the damper shaft. The selection depends on whether clockwise or counter-clockwise rotation of the damper shaft is required. Install the crank arm loosely on the damper shaft before the bracket is firmly affixed to the ductwork. Use sheet metal screws to attach the bracket to the ductwork, line up the crank arm, check the position of the damper, and tighten the crank arm set screws. The actuator is then positioned to provide the 90° rotation normally required.

MOUNTING



TYPICAL RIGHT ANGLE MOUNTING FOR EXTERNAL APPLICATIONS

	M572	M573	M574
A	5" (127 mm)	5-1/2" (140 mm)	7-3/4" (197 mm)
B	7-1/4 (184 mm)	8" (203 mm)	10-1/4" (260 mm)
C	2-1/8" (54 mm)	3-1/2" (89 mm)	4-1/2" (114 mm)
D	2-7/16" (62 mm)	3-5/8" (82 mm)	4-1/2" (114 mm)
E	5-9/16" (141 mm)	6-3/4" (171 mm)	7" (178 mm)



TYPICAL POST MOUNTING FOR INTERNAL APPLICATIONS

	M573	M574
A	10-3/4" (273 mm)	12-3/4" (324 mm)
B	6-3/8" (162 mm)	8-3/4" (222 mm)
C	1-1/4" (32 mm)	1-1/4" (32 mm)
D	7/8" (22 mm)	7/8" (22 mm)
E	11-1/2" (292 mm)	11-1/2" (292 mm)
F	2-11/16" (68 mm)	2-11/16" (68 mm)