

Instructions to collect details on Data Model Manager startup issue in MiCOM S1 Studio V5.1.0

The aim of this document is to give instructions to provide details which help to diagnose the Data Model Manager (DMM) startup issue which occurs after installation of MiCOM S1 Studio V5.1.0 (MS1S) on some machines.

Initially, please perform actions described in Prerequisites section. Then, copy the script files to DMM installation folder as described in Note #1. Afterwards, please follow the instructions of both Scenario #1 and Scenario #2. Remember to execute the scripts as explained in Note #2.

In the end, follow the steps described in Additional Info #1 and Additional Info #2 sections.

There are tables that provide space for notes and comments below. Please give answers to the questions raised there.

Prerequisites

Please follow below steps in order to prepare the system properly:

1. Uninstall any version of MS1S installed on the system.
2. Reboot the PC.
3. Install MS1S V5.1.0.
4. Startup the DMM application.

DMM probably is not started successfully. This step is just to confirm that the issue still exists. Could you please confirm?	Answer:
--	---------

5. Close DMM application.

Note #1

Following files are available as an attachment to this document:

- Step_1.RegWithRegasm.bat
- Step_2.RegWithRegsvcs.bat

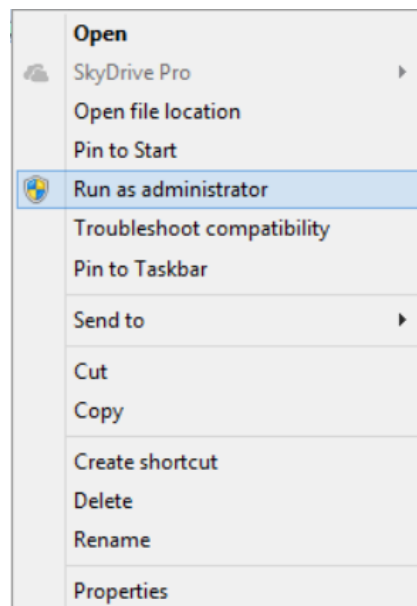
Above files should be copied by hand to the folder where DMM is installed, typically: "C:\Program Files (x86)\Schneider Electric\MiCOM S1 Studio\Data Model Manager".

Nazwa	Data modyfikacji	Typ	Rozmiar
en-GB	2015-04-08 08:04	Folder plików	
DMM.exe	2015-03-12 13:06	Aplikacja	1 164 KB
DMM.WindowsService.exe	2015-03-12 13:06	Aplikacja	102 KB
DMM.WindowsService.Run.exe	2015-03-12 13:06	Aplikacja	160 KB
DMM.Driver.dll.config	2015-03-10 12:55	Plik CONFIG	11 KB
DMM.exe.config	2015-03-10 12:55	Plik CONFIG	4 KB
DMM.WindowsService.exe.config	2015-03-10 12:55	Plik CONFIG	2 KB
Logging.config	2015-03-10 12:45	Plik CONFIG	1 KB
DMM.exe.manifest	2015-03-10 12:58	Plik MANIFEST	8 KB
DMM.EnterpriseServices.tlb	2015-04-16 07:24	Plik TLB	3 KB
RegisterCOMService.bat	2014-12-23 12:44	Plik wsadowy Win...	1 KB
Step_1.RegWithRegasm.bat	2015-04-15 14:31	Plik wsadowy Win...	1 KB
Step_2.RegWithRegsvcs.bat	2015-04-15 14:31	Plik wsadowy Win...	1 KB

The scripts do not work if executed in different folder than the installation folder of DMM.

Note #2

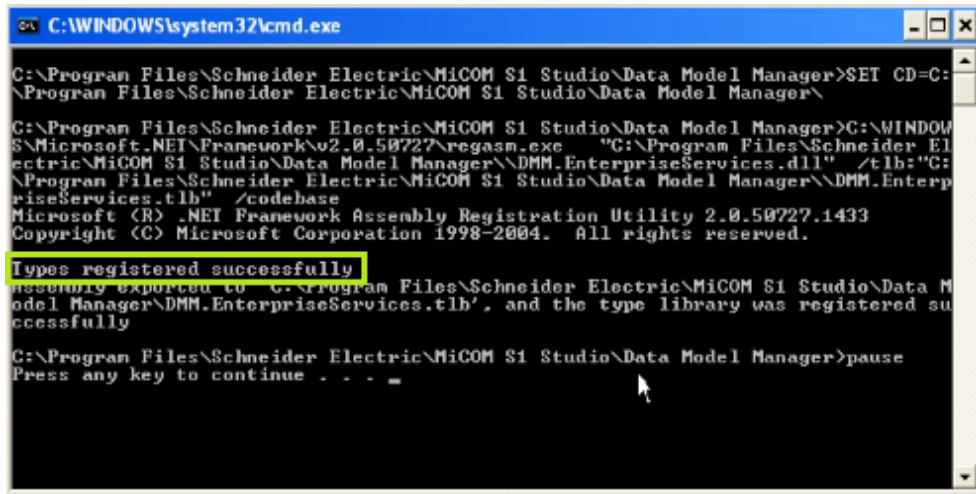
On operating systems newer than Win XP (Vista/7/8/8.1/10 etc.) the scripts have to be executed using "Run As Administrator".



Otherwise, the scripts fail due to insufficient privileges.

Scenario #1

1. Execute (Run as administrator) the script **Step_1.RegWithRegasm.bat** located in DMM installation folder. The console dialog similar to the one visible below should show up.



```
C:\WINDOWS\system32\cmd.exe
C:\Program Files\Schneider Electric\MiCOM S1 Studio\Data Model Manager>SET CD=C:\Program Files\Schneider Electric\MiCOM S1 Studio\Data Model Manager\
C:\Program Files\Schneider Electric\MiCOM S1 Studio\Data Model Manager>C:\WINDOWS\Microsoft.NET\Framework\v2.0.50727\regasm.exe "C:\Program Files\Schneider Electric\MiCOM S1 Studio\Data Model Manager\DMM.EnterpriseServices.dll" /tlb:"C:\Program Files\Schneider Electric\MiCOM S1 Studio\Data Model Manager\DMM.EnterpriseServices.tlb" /codebase
Microsoft (R) .NET Framework Assembly Registration Utility 2.0.50727.1433
Copyright (C) Microsoft Corporation 1998-2004. All rights reserved.
Types registered successfully
Assembly exported to 'C:\Program Files\Schneider Electric\MiCOM S1 Studio\Data Model Manager\DMM.EnterpriseServices.tlb', and the type library was registered successfully.
C:\Program Files\Schneider Electric\MiCOM S1 Studio\Data Model Manager>pause
Press any key to continue . . . =
```

Is there 'Types registered successfully' message available? Please provide a screenshot.	Answer:
--	---------

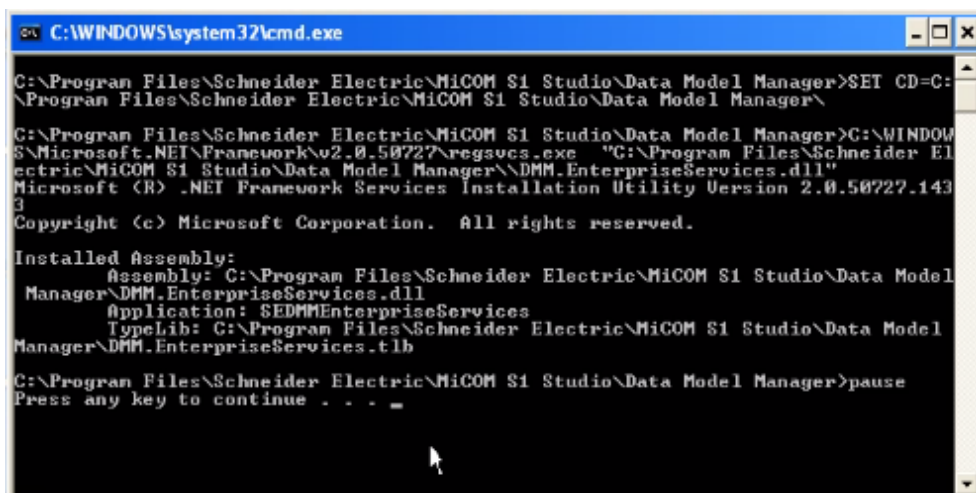
2. Press any key to close the console dialog.
3. Startup the DMM application.

Is the DMM successfully started?	Answer:
----------------------------------	---------

4. Close the DMM.

Scenario #2

1. Execute (Run as administrator) the script **Step_2.RegWithRegsvcs.bat** located in DMM installation folder. The console dialog similar to the one visible below should show up.



```
C:\WINDOWS\system32\cmd.exe
C:\Program Files\Schneider Electric\MiCOM S1 Studio\Data Model Manager>SET CD=C:\Program Files\Schneider Electric\MiCOM S1 Studio\Data Model Manager\
C:\Program Files\Schneider Electric\MiCOM S1 Studio\Data Model Manager>C:\WINDOWS\Microsoft.NET\Framework\v2.0.50727\regsvcs.exe "C:\Program Files\Schneider Electric\MiCOM S1 Studio\Data Model Manager\DMM.EnterpriseServices.dll"
Microsoft (R) .NET Framework Services Installation Utility Version 2.0.50727.1433
Copyright (c) Microsoft Corporation. All rights reserved.
Installed Assembly:
  Assembly: C:\Program Files\Schneider Electric\MiCOM S1 Studio\Data Model Manager\DMM.EnterpriseServices.dll
  Application: SEDMMEnterpriseServices
  TypeLib: C:\Program Files\Schneider Electric\MiCOM S1 Studio\Data Model Manager\DMM.EnterpriseServices.tlb
C:\Program Files\Schneider Electric\MiCOM S1 Studio\Data Model Manager>pause
Press any key to continue . . . =
```

Are there error messages or the registration hangs with no 'Press any key to continue' message? Please provide a screenshot.

Answer:

2. Press any key to close the console dialog. If hangs for more than one minute close the dialog using 'x'.
3. Startup the DMM application.

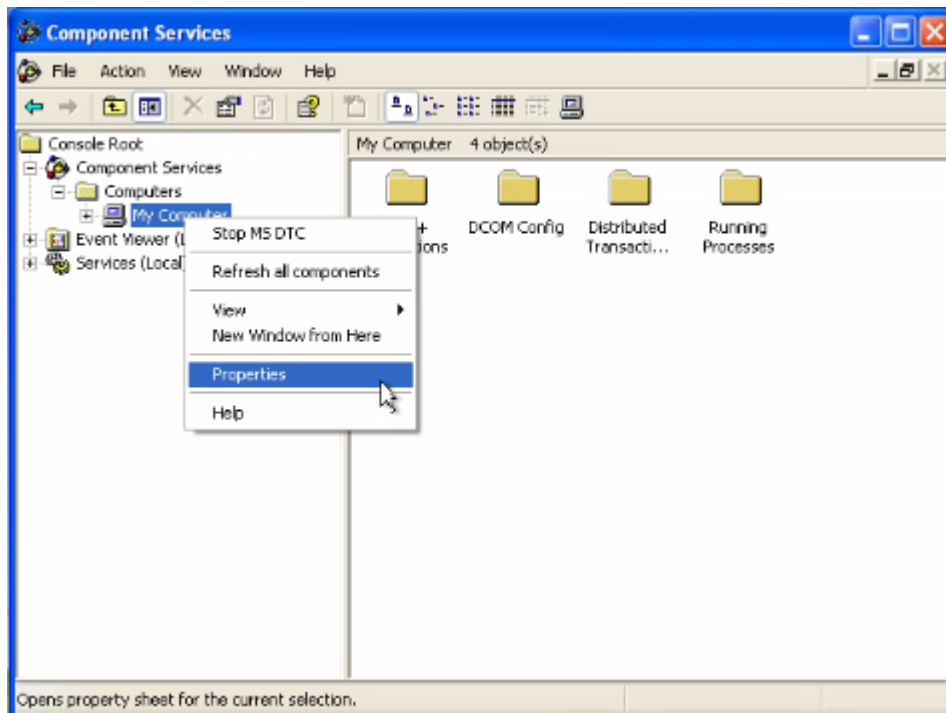
Is the DMM successfully started?

Answer:

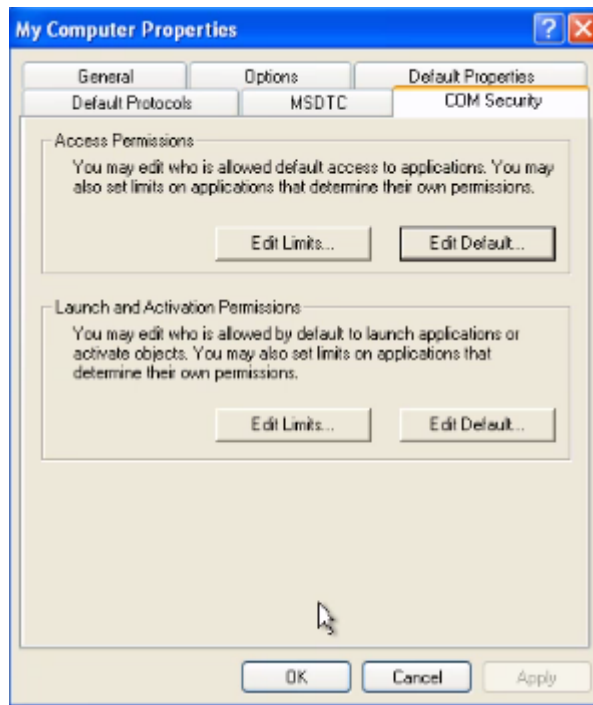
4. Close the DMM.

Additional Info #1

1. Open the Run dialog box by pressing Windows Key + R.
2. Type **dcomcnfg** command and press Enter. Component Services snap-in should be displayed on the screen.
3. Expand *Component Services* node, then expand *Computers* node and right click on *My Computer* and choose *Properties* from the context menu. Properties dialog should show up.



4. Click on *COM Security* tab.



Can you see the content of the tab and the buttons are enabled? On some machines with COM issues the dialog cannot be displayed properly and error message appears.

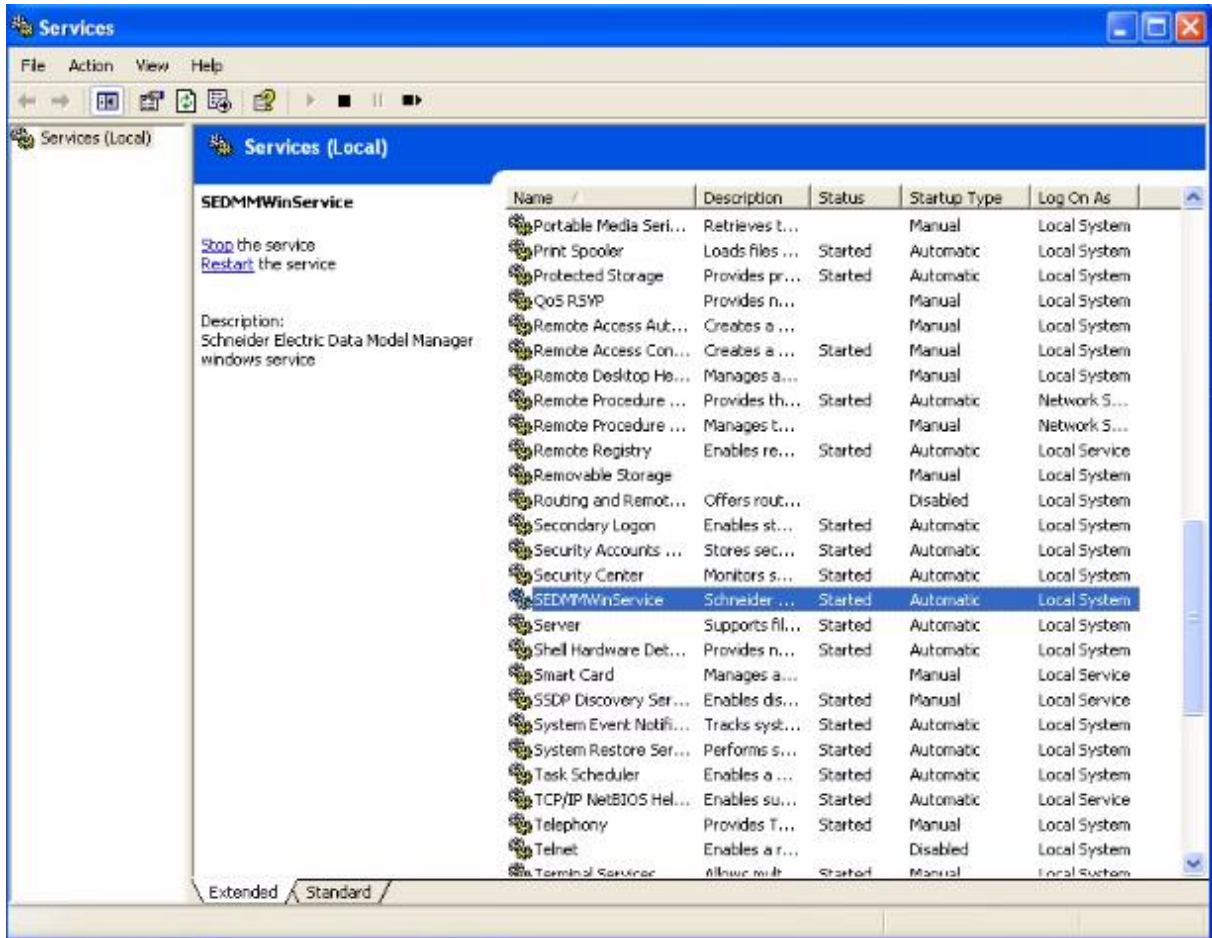
Answer:

5. Close the Properties dialogs and Component Services snap-in.

Additional Info #2

1. Open the Run dialog box by pressing Windows Key + R.
2. Type **services.msc** command and press Enter. Services snap-in should be displayed on the screen.

3. Browse the services list and try to find *SEDMMWinService*.



Can you see the SEDMMWinService entry? Is it Started with Startup Type set as Automatic?

Answer:

4. Close the Services snap-in.