

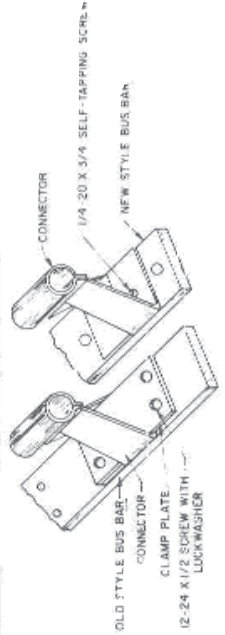
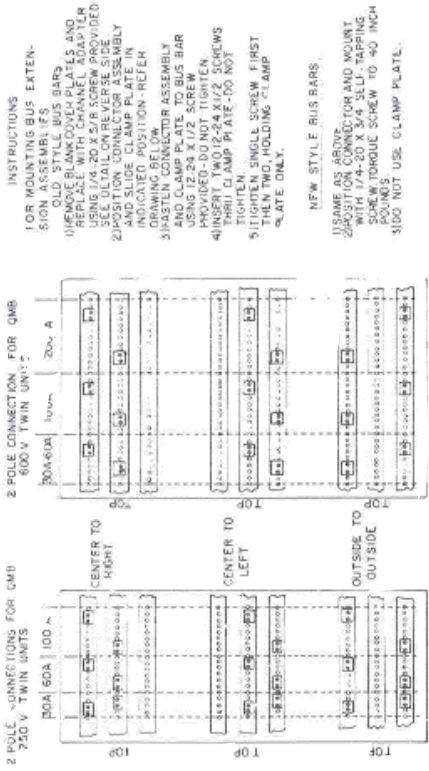
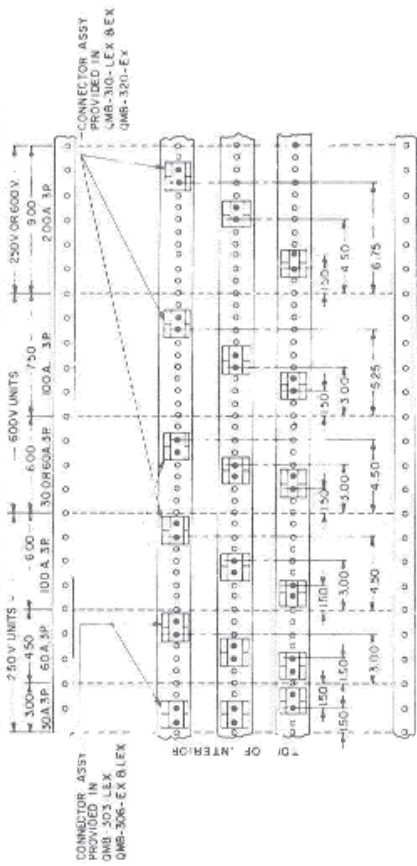
MOUNTING INSTRUCTIONS FOR SERIES 4 QMB SWITCHES



HAZARD OF ELECTRIC SHOCK, EXPLOSION OR ARC FLASH

- Apply appropriate personal protective equipment (PPE) and follow safe electrical work practices. See NFPA 70E
- This equipment must only be installed and serviced by qualified electrical personnel.
- Never operate energized switch with door open.
- Turn off switch before removing or installing fuses or making load side connections.
- Always use a properly rated voltage sensing device at all line and load fuse clips to confirm switch is off.
- Turn off power supplying switch before doing any other work on or inside switch.
- Do not use renewable link fuses in fused switches.

Failure to follow these instructions will result in death or serious injury.



80043-089-03

SEE SHEET 1 FOR NOTES

10
9
8
7
6
5
4
3
2
1

CURRENT REVISION DESCRIPTION

REVISION LEDGER

DO NOT SCALE - WORK TO DIMENSIONS

PRINTS TO: **PB**

REV	ECO	DATE	BY	CHKD

STANDARD TOLERANCE UNLESS OTHERWISE SPECIFIED	LINEAR DIMENSION	ONE PLACE DECIMAL + or - .060 TWO PLACE DECIMAL + or - .030 THREE PLACE DECIMAL + or - .005
	HOLE DIAMETER	TWO PLACE DECIMAL + or - .010 THREE PLACE DECIMAL + or - .002

ECO	DATE	BY	CHKD	SCALE
P030165	10SEP2003	KWB	DKH	1:1

B **80043 089 03**

REVISIONS TO THIS DOCUMENT MUST BE MADE ON PC DATA BASE.

PROPRIETARY DOCUMENT PROPERTY OF SQUARE D COMPANY
NOT TO BE REPRODUCED BY ANY MEANS OR USED TO FURNISH INFORMATION TO OTHERS WITHOUT THE EXPLICIT CONSENT OF SQUARE D COMPANY.
ALL RIGHTS RESERVED. © 1994, SQUARE D COMPANY

TITLE
INSTRUCTION SHEET

SHEET 2 OF 2



USED ON
SERIES 4 QMB SWITCHES

80043 089 03