

How to add your meter to MV90 (ETHERNET)

1. Open System Parameters (fig 1.0)
2. Create a new Communication Workstation (fig 2.0)

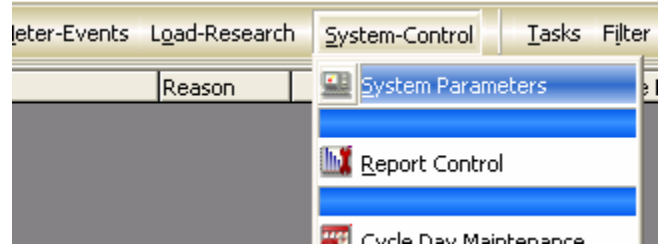


Figure 1.0 – Open system parameters

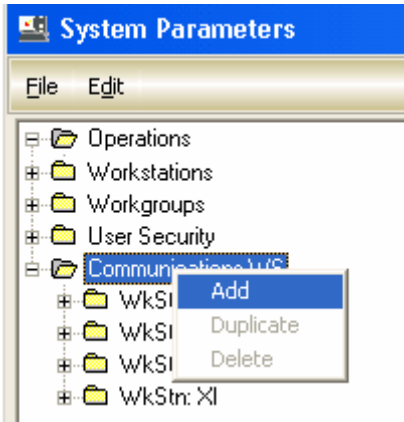


Figure 2.0 – Adding a new communication workstation

3. Right click on your new communication workstation and add a port 1 (fig 3.0)

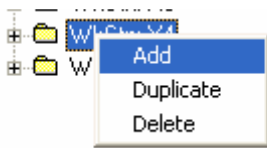


Figure 3.0 – add a port to the comm. workstation

4. Set the Connection Type to something like TCPIP (fig 4.0)
5. Open Master File Maintenance

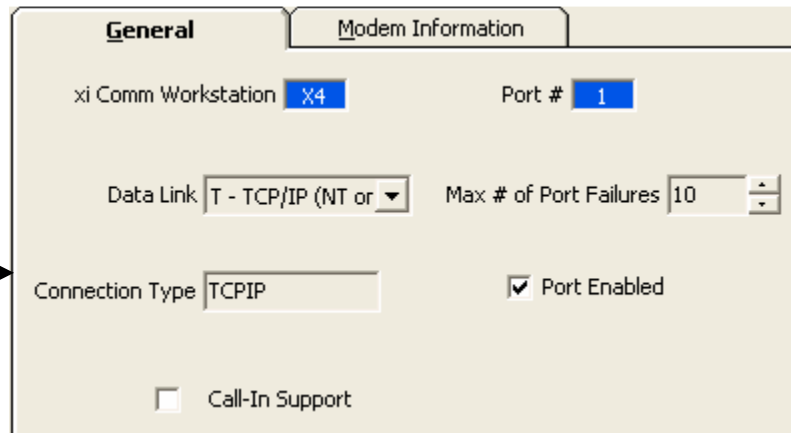


Figure 4.0 – communication workstation port 1 properties



Figure 5.0 – This is the icon located in the top left of Monitor

6. Go Edit > New Customer
Fill in the following
Customer ID: name your customer
New Device ID: Serial num of meter (or tag2 field if present)
Increment the number of channels to 4
Click OK. (fig 6.0)

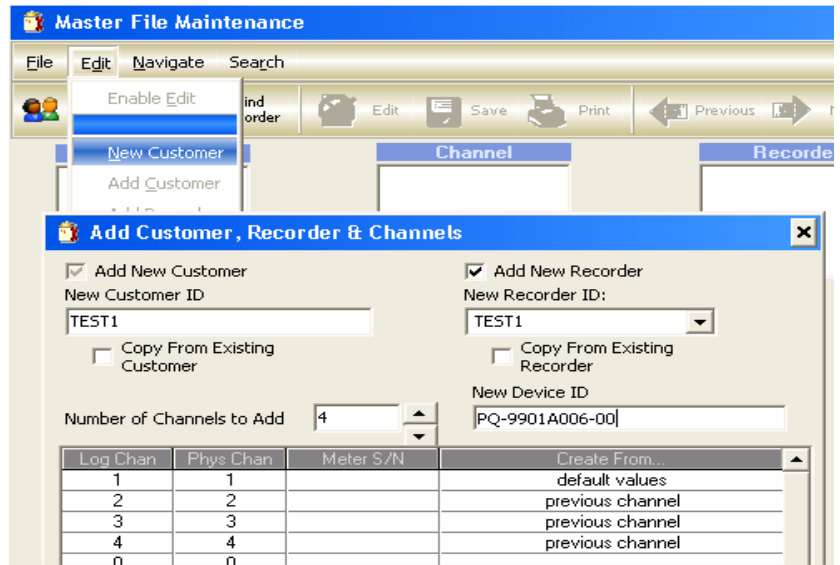


Figure 6.0 – Open Master File Maintenance and create a new customer

- Next, it will ask you to configure the Recorder.
 - Under TIM Number, There should only be one Tim Number for all ION Meters. (Provided the tim_ion.dll file is copied in the mv90 root) (fig 7.0)

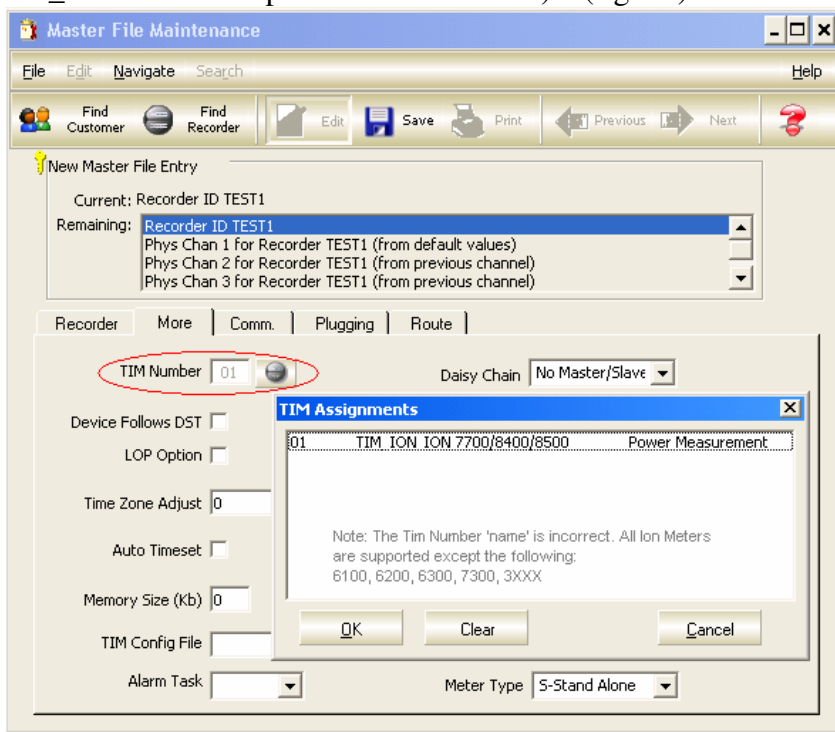


Figure 7.0 – This is the ‘MORE’ Recorder ID TAB

- Configure The ‘comm’ section of the recorder as follows: (fig 8.0)

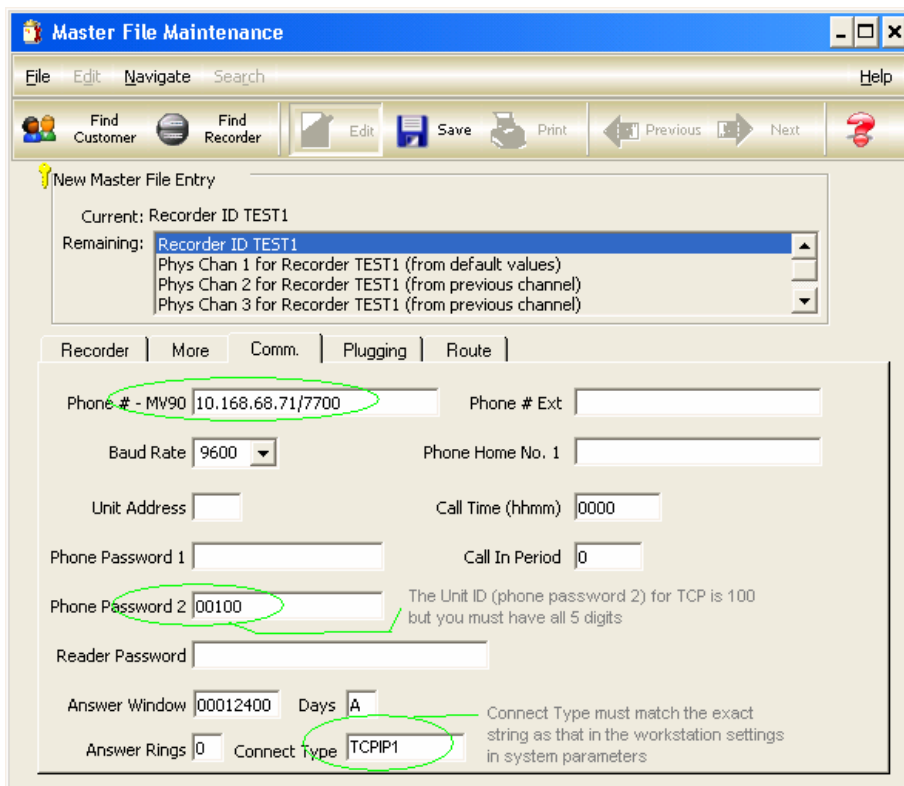


Figure 8.0 – This is the ‘COMM’ Recorder ID TAB

9. Now configure each channel. Each channel should be configured like below: (fig 9.0)

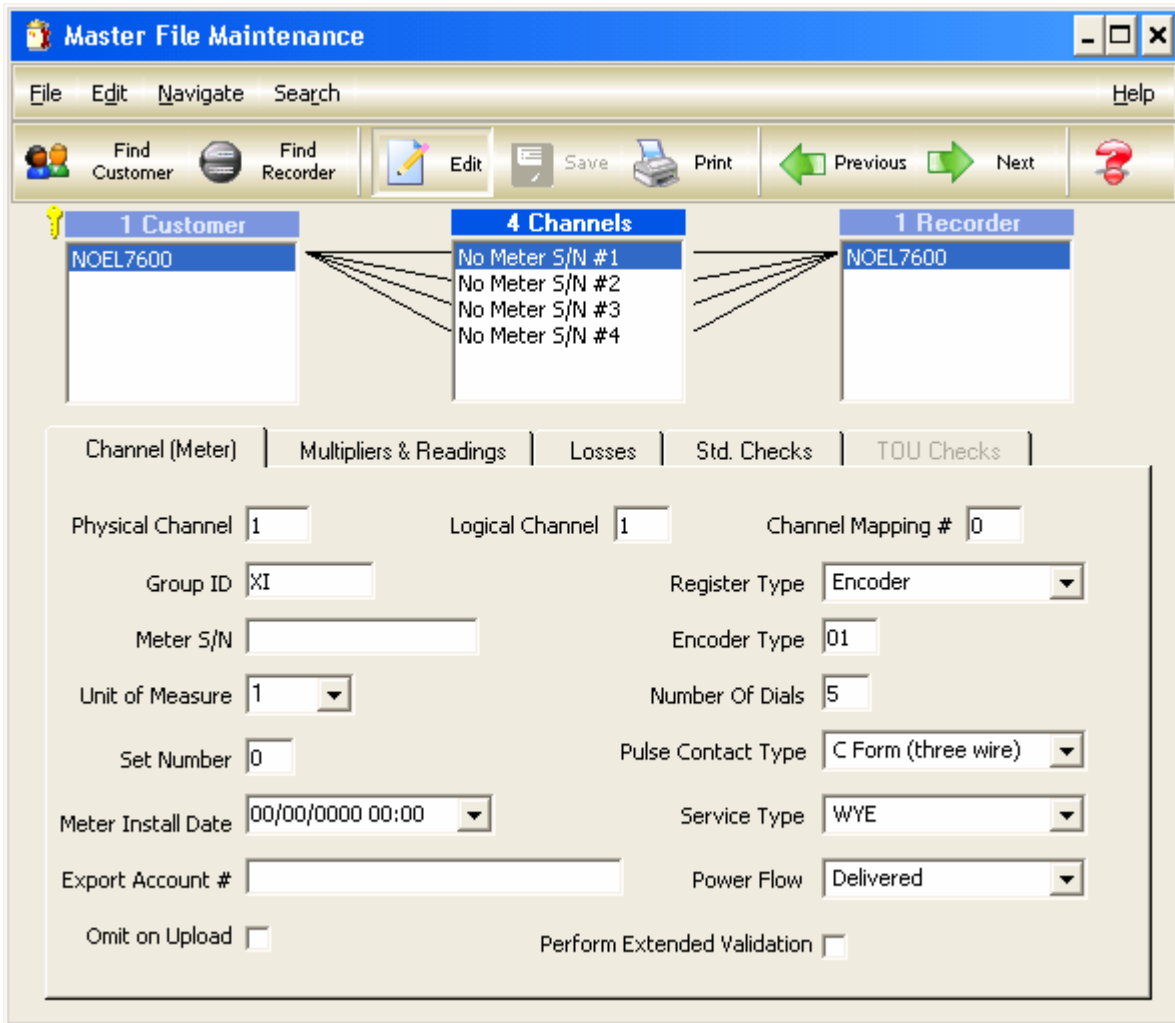


Figure 9.0 – Fill in the four channels with information below

<p>Channel 1: Group ID=XI (or what you named your communication workstation group) Physical Channel = 1 Logical Channel = 1 Channel Mapping=0 Register Type=Encoder Encoder Type=01</p> <p>Channel 2: Group ID=XI (or what you named your communication workstation group) Physical Channel = 2 Logical Channel = 2 Channel Mapping=0 Register Type=Encoder Encoder Type=05</p>	<p>Channel 3: Group ID=XI (or what you named your communication workstation group) Physical Channel = 3 Logical Channel = 3 Channel Mapping=0 Register Type=Encoder Encoder Type=02</p> <p>Channel 4: Group ID=XI (or what you named your communication workstation group) Physical Channel = 1 Logical Channel = 1 Channel Mapping=0 Register Type=Encoder Encoder Type=06</p>
---	---

10. Next, close this screen. Go 'Remote Interrogation' and Schedule a partial read, then quickly switch to the commXI windows in the task bar.