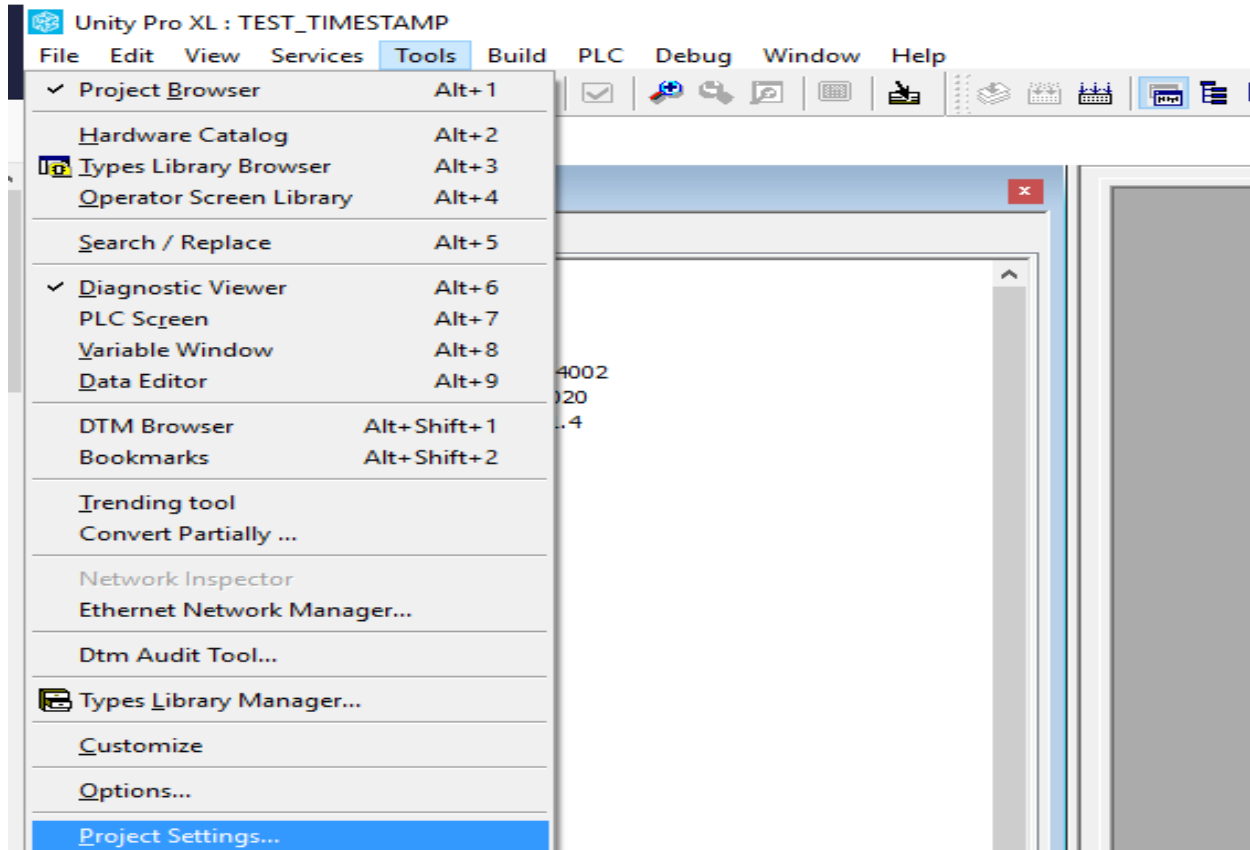
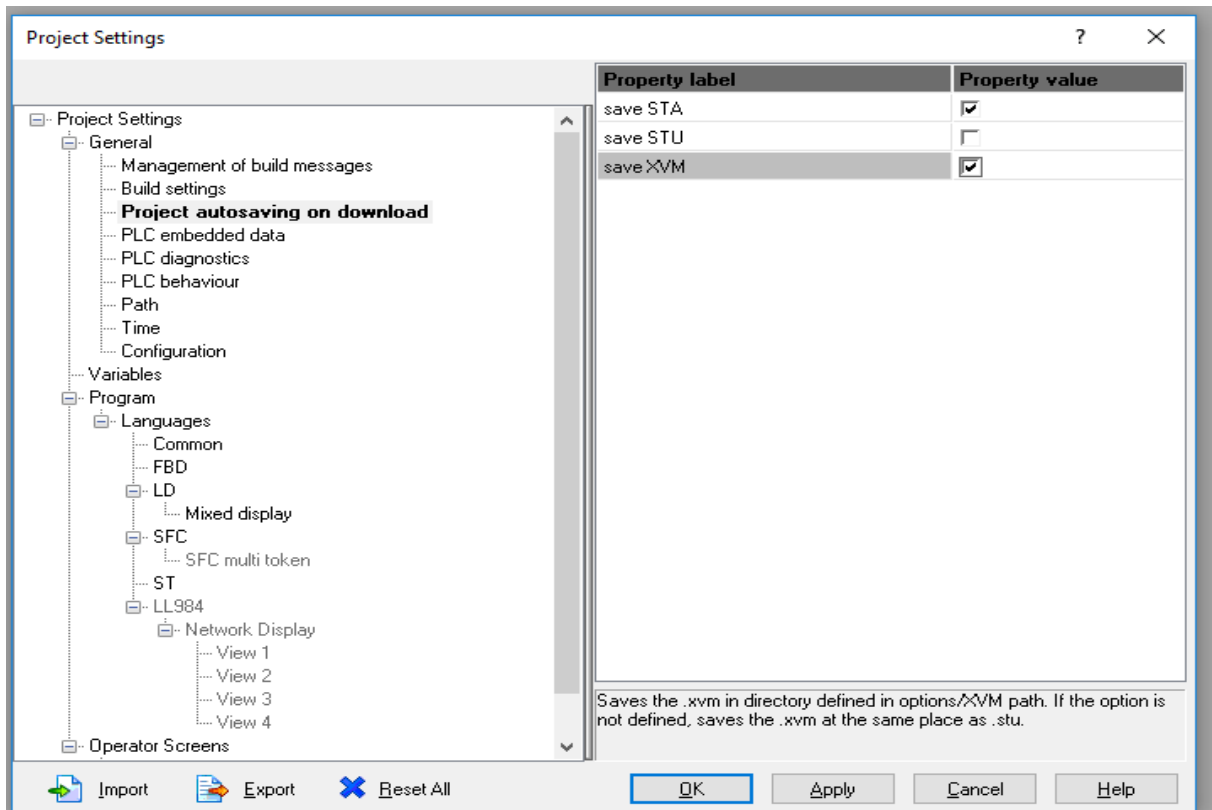


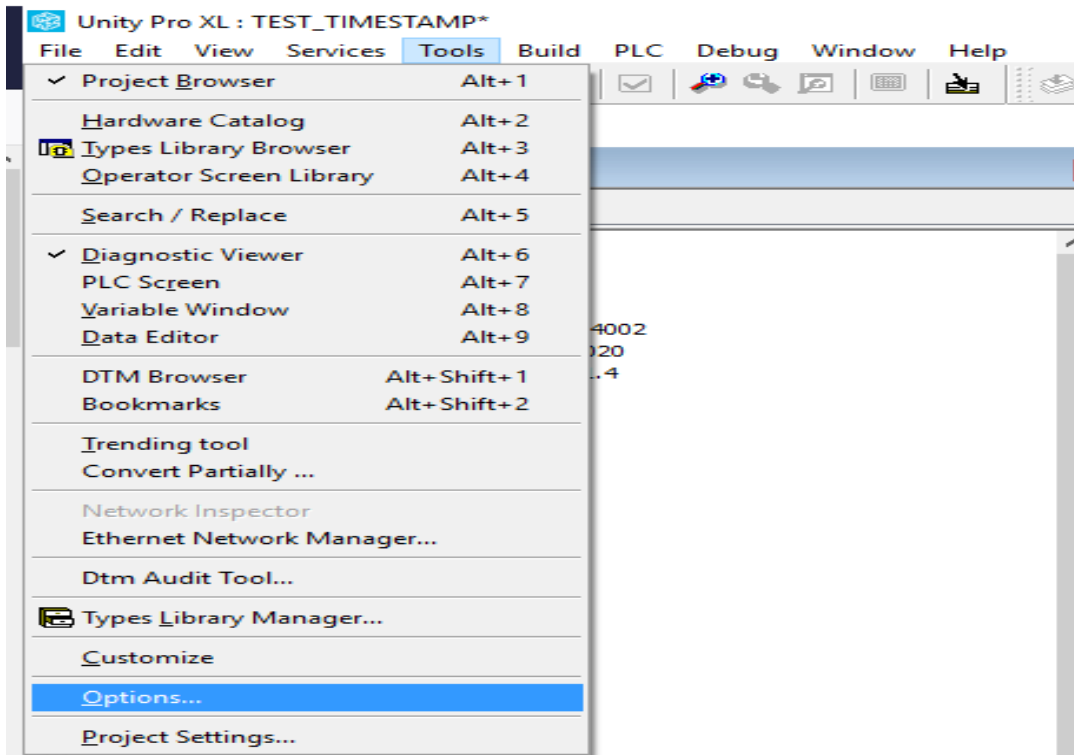
How to configure Unity Pro to generate automatically the XVM file after a transfer to PLC

Step 1: Enable the XVM file in the Unity Pro:





Step 2: Define the path to save the XVM file



Options Management

? X

- Options
 - General
 - Paths**
 - Data and Languages
 - Spreadsheet behavior
 - Languages
 - LL984
 - Mnemonics
 - Connection
 - Operator Screens
 - Grid
 - Edit
 - OnLine mode
 - Default screen size
 - Screen opening
 - Converters
 - PL7
 - Concept

Property label	Property value
Project path	C:\Users\Public\Documents\Schneider Ele
Import/Export file path	C:\Users\Public\Documents\Schneider Ele
XVM path	C:\Users\Public\Documents\Sch ...
Project settings templates path	C:\Users\Public\Documents\Schneider Ele
Project settings template file	
Custom Library path	C:\ProgramData\Schneider Electric\Unity P
Working drive	C:\
Log files path	C:\ProgramData\Schneider Electric\Unity P

Path of the XVM file used for the automatic save on project transfer to PLC

Import Export Reset All OK Apply Cancel Help