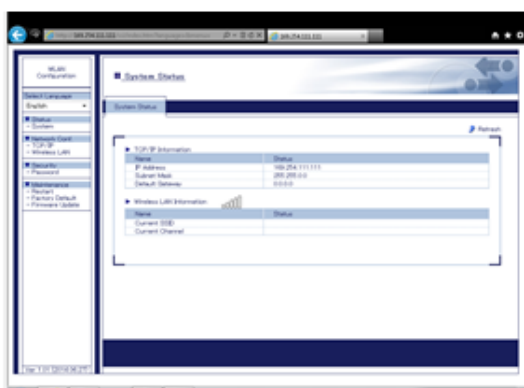


## Technical Note Complement for Magelis GTU Wlan Display

**Introduction :** All the following informations are concerning the Display ,reference HMIDT643, available today only combined with the Box , HMIG5U.

### 1) Extra Software Tools for the Display HMIDT643:

On HMIDT643, WLAN is configurable from the Web based built-in WLAN Configuration Tool. The tool is accessible as a web page from a Web Browser (e.g. IE) on HMIG5U



Access with IP Address (HTTP): 169.254.111.111 (factory default)

**Two extra Software for configuration are proposed to download :**

➤ **Tool name: "WLAN Finder"**

**Function:** Search IP address of the WLAN when customer forget it.

➤ **Tool name: "WLAN Tools"**

**Functions:**

- 1) Reset all WLAN unit settings to the factory default including the IP address.
- 2) On/Off the WLAN unit

### 2) Limitation on the first production lot on the Display HMIDT643:

**A limitation** is found in WLAN configuration tool (built-in the WLAN module in the WLAN Display Unit , ref HMIDT643 PV01 , RL01 ).In the case customer set password to access built-in configuration tool, the configurations can not be changed. It will be corrected during this summer with an update of the firmware of the Display HMIDT643 with PV02 , RL02.

➔ **Two work around are proposed.**



➤ **work around N°1 :**

-Remove password.

Click "Password" in Security menu.

Click "Submit" button in Password Configuration screen with keep the new password filed blank. ( page 36 of Wireless LAN Setting Manual )

- Restart the Configuration tool

Click "Restart" in Maintenance menu.

Click "Yes" button in Server Restart screen.

( page 37 of Wireless LAN Setting Manual )

After restarting the WLAN Configuration Tool, customer can change the setting.

After changing the configuration, set password again if customer want.

➤ **work around N°2 :**

- Update the firmware with the file : SX-570-DIG\_v102.bin provided.

(For the operation, please refer to the section "Firmware Update" in the Wireless LAN Setting Manual")

-----