

1. Setting a “stable” HSBY configuration with a SCAIME module

Subject of this Chapter This chapter describes how to be sure of the initial phase and well running of the HSBY system with a SCAIME module.

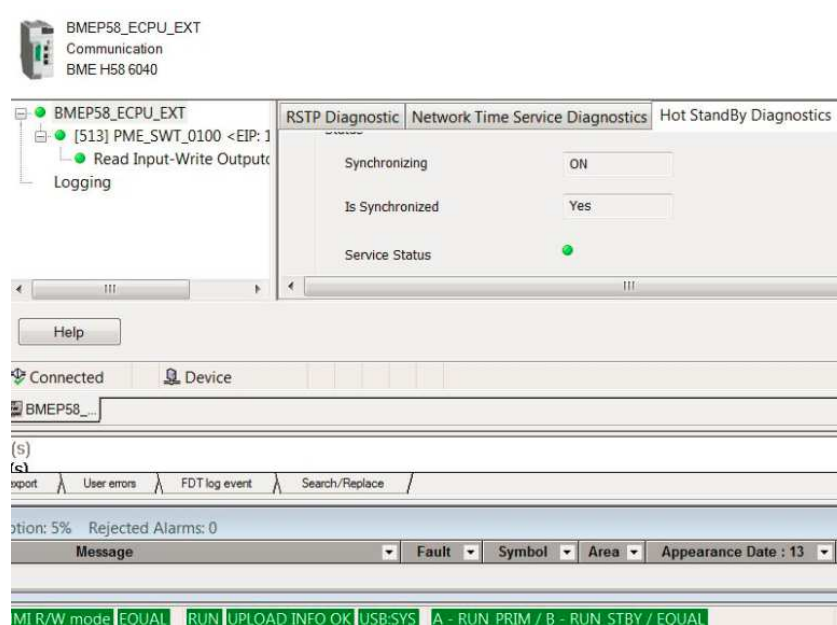
The configuration has to be done as explained in the chapters “Working with M580 Hot Standby Applications” and “PME SWT\ Adding a Third-Party Module to a Unity Pro Project”.

We will consider for the next part of this document that the HSBY system with SWT PME configured is in good way of running (meaning a CPU is Primary and the second one is Standby and weighing is functional) . After that, what is important is to check the status of the synchronization of the FDRs HSBY servers.

For that follow the scenario as described in “Synchronizing Configuration of Distributed Equipment” part of Unity Pro documentation.

In Unity Pro, open the DTM Browser (Tools → DTM Browser), Right-click the CPU in the DTM Browser, Select Connect, Right-click the CPU in the DTM Browser, Select Device menu → Diagnosis, Click the Hot Standby Diagnosis tab :

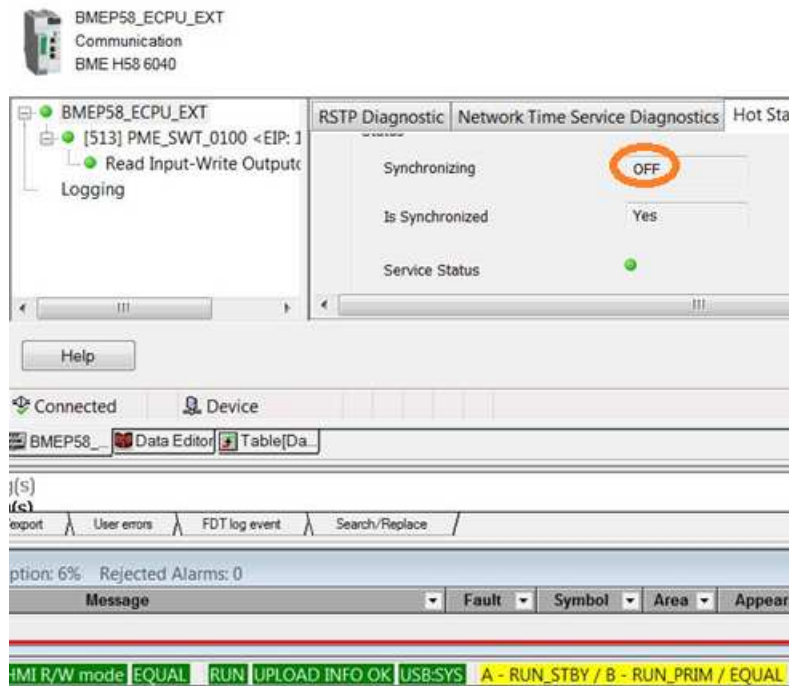
PME_SWT module is connected to CPU , “Synchronizing mode” in ON ,Servers “Synchronized” and “Service” OK



2. How to keep synchronized the servers

Object of this Chapter This chapter describes how to keep synchronized the FDR servers in normal operation.

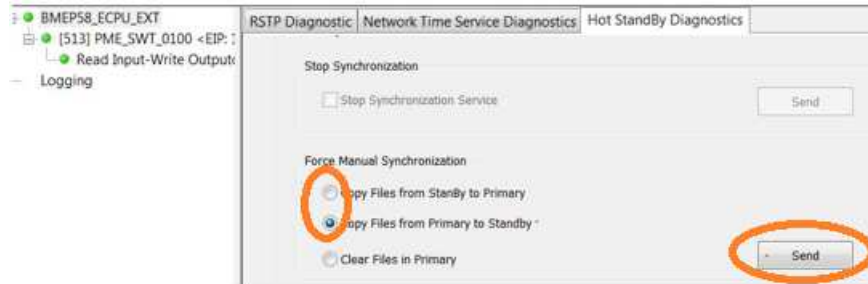
Synchronizing OFF Observation :
 We suppose that at any time, your HotStandby system is operational: (identical FDR server in the CPU “A” & “B” . One CPU is Primary and the other one is Standby).
 Following one or many switch over or a swapp, we observe that the status of Synchronizing mode moves into OFF. In this case, don’t be worried. Your system will continue to be operational, if you don’t perform any change in the FDR server of your system (no new calibration, no modification in the configuration of the Scaime module). Servers are “...Synchronized”.



If the Synchronizing mode is OFF, whatever the change done in the configuration (.prm) files for distributed equipment in one of the FDR server, the modification will not be synchronized between the two servers. So if you perform some modifications which impact the FDR server, your system will become not predictable following a swap or a switchover. It is recommended to check this screen at each evolution made in the application concerning the configuration applied in the configuration (.prm) files for distributed equipment .

Restart the synchronization service

If this synchronization status is OFF, re-start the synchronization service, selecting one of the Force Manual Synchronization options (below), from the Primary CPU then click on the button “Send” .



You will recover the Synchronizing mode OK !



To Conclude:

If the “synchronizing” mode is always Ok , or less , if the service “ Is Synchronized” we guarantee the good running of the distributed equipment in RIO Rack following switch-over or swap.