

FAQ :

How to display several panels of a Vijeo Designer application using in same time several displays and HMIZMDARX Multi Display Adaptor?

Goal: To display two different panels of a same Vijeo Designer project with panel 1 displayed on the Host HMIG5U2 and panel 2 displayed on the Client through the Webgate.

To test, we'll use:

- a HMIG5U2 with HMIDT551 as Host and
- a HMIDT551 with HMIZMDARX module as Client.

Tools:

- Multi Display Adapter User Guide:

[http://download.schneider-electric.com/files?p\\_enDocType=User+guide&p\\_File\\_Name=EIO0000002435\\_02.pdf&p\\_Doc\\_Ref=EIO0000002435](http://download.schneider-electric.com/files?p_enDocType=User+guide&p_File_Name=EIO0000002435_02.pdf&p_Doc_Ref=EIO0000002435)

- Multi Display Adapter User Guide page 60.PNG :

#### Installing the MDA Utilities

Follow the steps below to install the required drivers and utilities (*see page 52*) to the host.

**NOTE:** When installing the utilities and changing settings in MDA Configuration Tool, always ensure that the Write Filter is disabled. If the Write Filter is enabled, the setting information will be erased when the operating system is restarted. After you change the setting, we recommend that you re-enable the Write Filter.

Step	Action
1	Download the installer (MDA_Utilities_[version]_EN.zip) onto the host and unzip the file ( <i>see page 52</i> ).
2	Run setup.exe, and follow the on-screen instructions to install the drivers and the utilities.
3	After installation is complete, as instructed by the message, restart the computer.
4	After the computer starts up, start the utilities from the Windows® Start menu → <b>Schneider Electric</b> → <b>Multi Display Adapter</b> → <b>MDA Configuration Tool</b> .

### NOTICE

#### EQUIPMENT DAMAGE

Do not turn off this product:

- While updating settings.
- While this product is restarting after the firmware settings have been updated.
- While resetting this product to the factory default settings.

**Failure to follow these instructions can result in equipment damage.**

We created a simple project with Vijeo designer 6.2 SP8 version with only 2 panels (1&2)

Steps Client side:

- 1- Attach the HMIZMDARX module



as a rear module of the HMIDT551



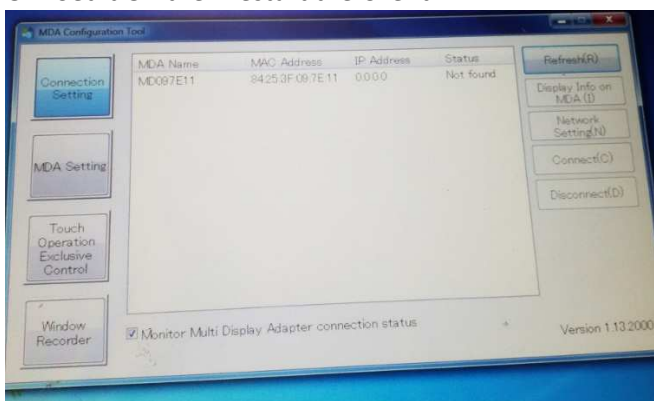
- 2- On the back of the HMIZMDARX module, set the DHCP switch On
- 3- Power-on the HMIZMDARX module
- 4- Connect this module to the LAN with Ethernet cable

Steps Host side:

- 1- Connect the HMIG5U2 to the same LAN with Ethernet cable
- 2- Start the HMIG5U2
- 3- Start the MDA configuration tool (if not installed on the HMIG5U2, please install it): Windows/All Programs/Schneider-Electric/Multi Display Adapter/MDA Configuration Tool

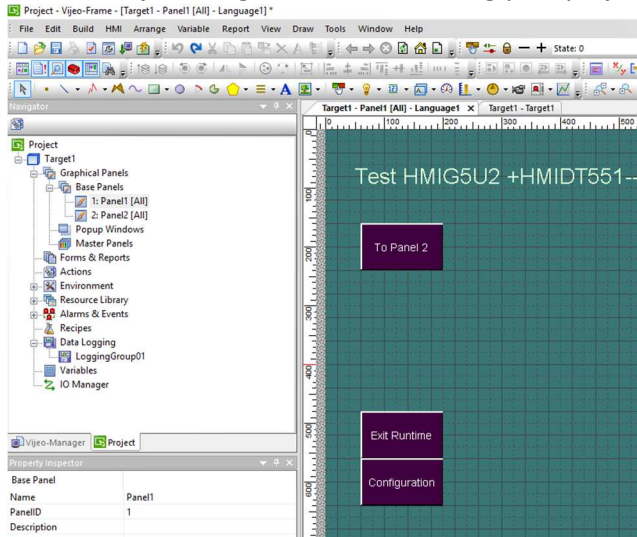


- 4- It is possible the MDA detect the second display with an IP address 0.0.0.0. if the DHCP switch of the Client is Off. Set it On then restart the Client.



- 5- After some instants the Client IP address is displayed in the MDA Configuration tool.

- 6- Be sure the Webgate Client File of Vijeo Designer is installed on the Host HMIG5U2 (If not please install it).
- 7- Start the Vijeo Designer Runtime running your project including Panel 1 & Panel 2



- 8- The project opens on the Initial Panel ( Panel1)
- 9- Using the Windows logo, open the Internet Explorer
- 10- Enter the local address: <http://127.0.0.1/>
- 11- The Webgate opens, then you can Check in Monitoring leaf/Webgate In Frame
- 12- The goal is reached: you can display the Panel 2 through the Webgate on the Client display and the Panel 1 in the Vijeo Designer Runtime of the Host.

