

How to connect a Zelio REG Controller to a PC ?

I- Type of publication

<input type="checkbox"/>	Typical application
<input checked="" type="checkbox"/>	Best know Method (BKM)
<input type="checkbox"/>	Troubleshooting guide

<input type="checkbox"/>	Level 2 use
<input type="checkbox"/>	Internal use
<input checked="" type="checkbox"/>	Customer

II- Product

- Product range :

Zelio Control ▼

- Product family :

REG ▼

III- Introduction

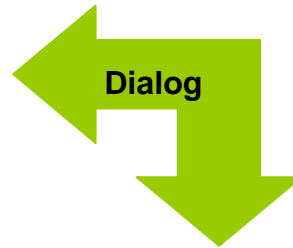
This application sheet describes the way to connect a controller of ZELIO REG range to a PC, in order to configure the controller with ZELIO CONTROL SOFT.

IV- Description

1. Set of equipment:



PC with Zelio Control Soft + Convertisseur USB/RS485 + Cable RJ45/Free wire

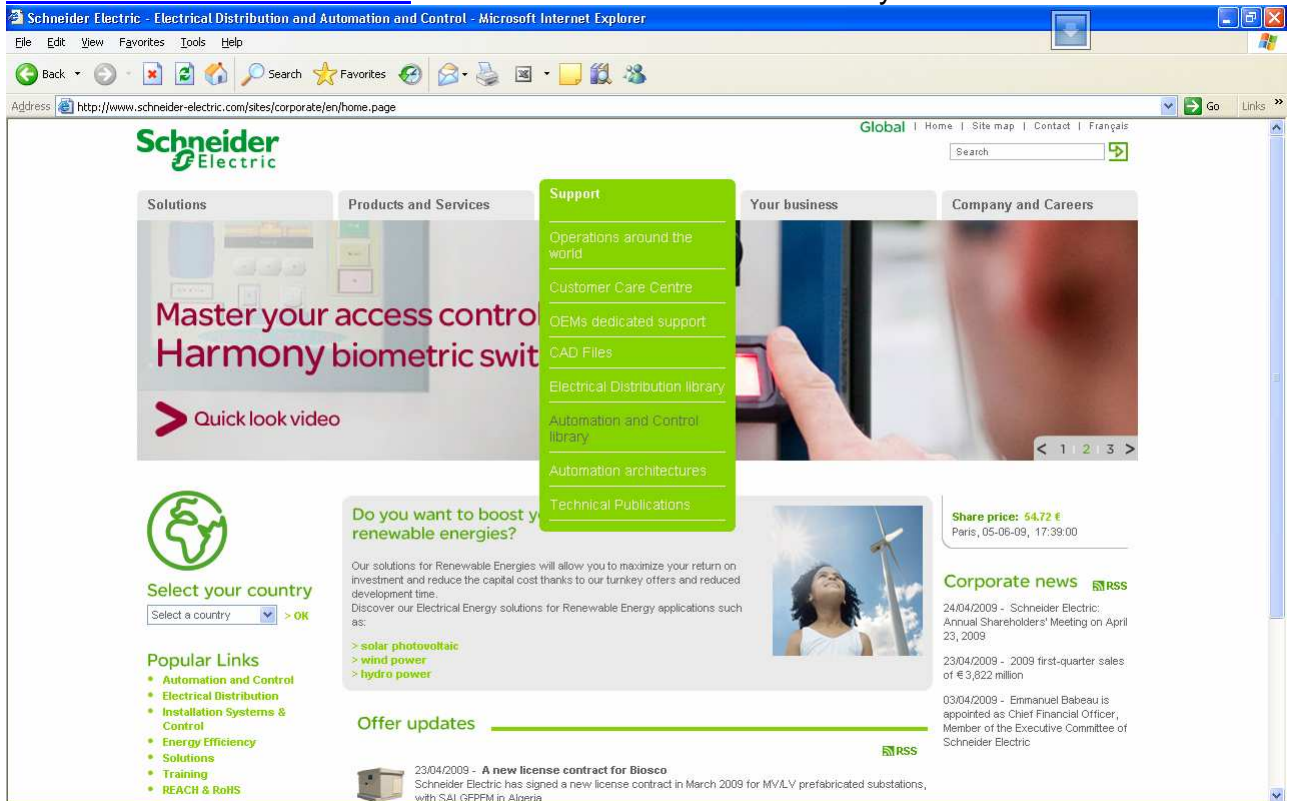


Zelio Controllers

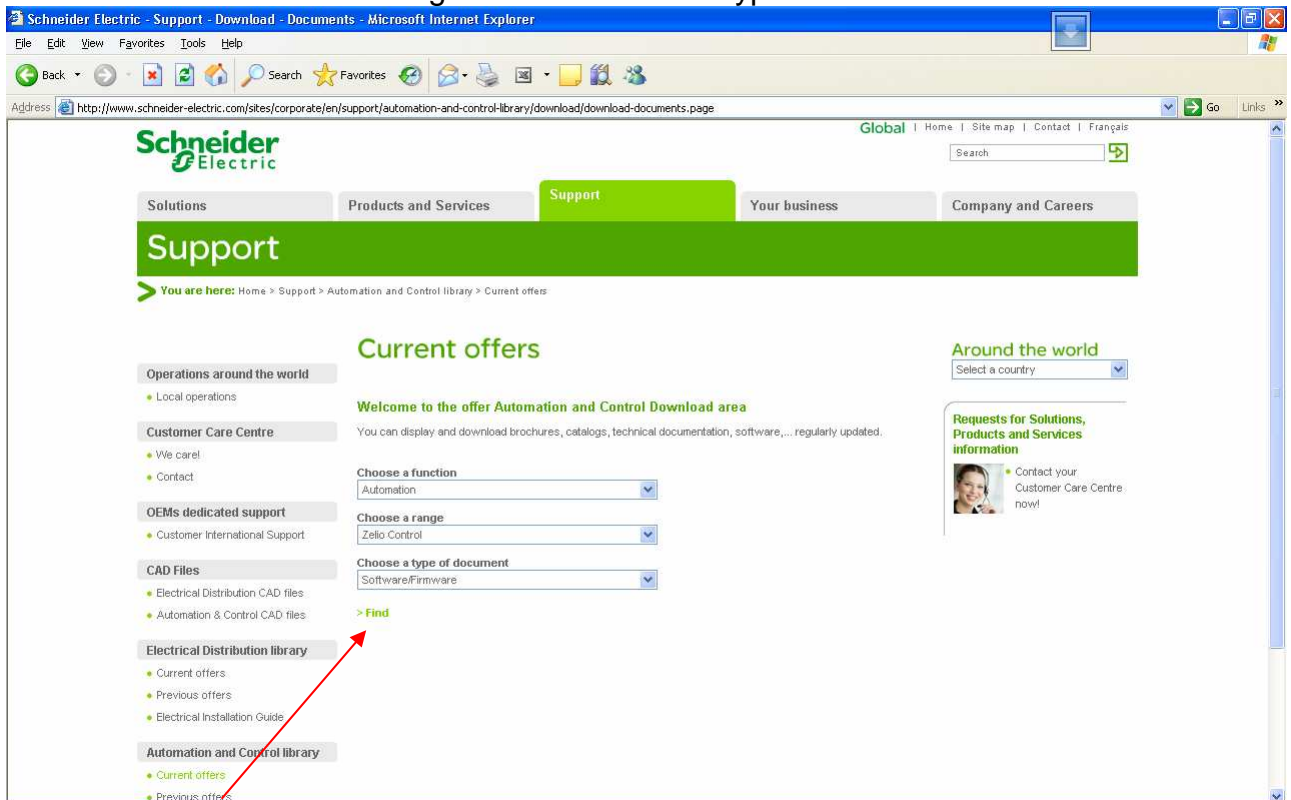
2. Software:

Free Download @:

www.Schneider-electric.com → Automation and Control library



Function : Automation → Range: Zelio Control → Type of document: Software



Click on "Find"

3. Accessories:

- **USB / RS485 converter installation:**

VW3A8117:

Step1

Installation of driver with CD.

Step2

Plug in the USB converter.

Tested with XP Pro – XP Home – XP Vista



TSXCUSB485:

Step 1

Click on the link below to download the Schneider Electric drivers pack V2.5.

<http://download.telemecanique.com/C1257241006DE82C/All/C125713F005265E2C12573B100329443?Opendocument>.

Install the TWDCUSB485 driver on your computer.

- **Step 2**

Set the rotative selector on “OTHER MULTI” position.

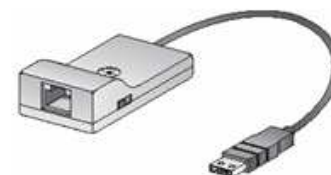
- **Step 3**

Plug the TWDCUSB485 converter to your computer.

- **Step 4**

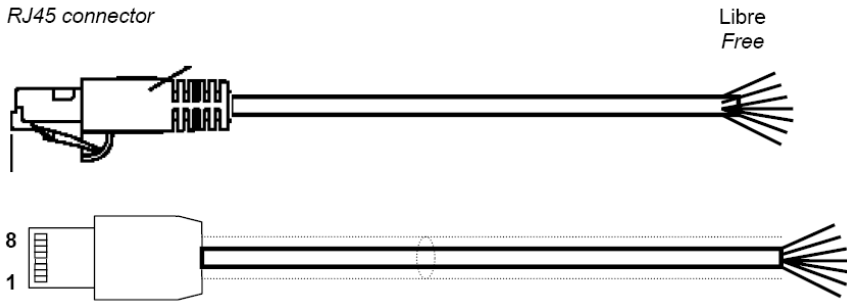
On the left side of the TSXCUSB485 converter, move the “polarization” switch on “OFF” position.

If the converter is connected to another MODBUS product, check the polarization.



• **Cable RJ45 - free wire :**

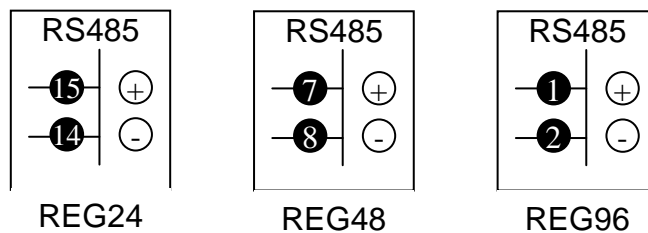
Connecteur RJ45
RJ45 connector



RJ45 PIN		Couleur	Color
1		Blanc/Vert	White/Green
2		Vert	Green
3		Blanc/Orange	White/Orange
6		Orange	Orange
4		Bleu	Blue
5		Blanc/Bleu	White/Blue
7		Blanc/Marron	White/Brown
8		Marron	Brown
Blindage Shield			

TWDXCAFJ010 : 1 meter.
VW3A8306D30 : 3 meters.

Wiring on controller's terminal :

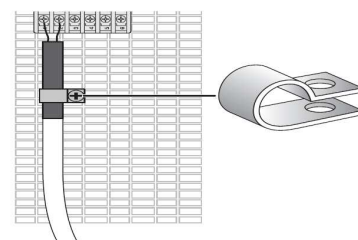


All RS485 controllers are equipped with polarization resistors.



Connect :
Blue/White wire on (-)
Blue on (+)

Use a metallic strap to connect to the grounding:



4. Product configuration :

REG24

Check the communication parameters by front panel:



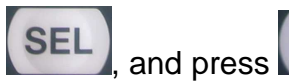
Press until the next display:



Press to select Station Number:



Press , and to change the MODBUS @. Validate with



, and press



Press , and to change the MODBUS Baud rate and parity, according to the following table:

0	9600: Odd
1	9600: Even
2	9600: None
3	19200: Odd
4	19200: Even (Default)
5	19200: None

Validate with .

The original MODBUS configuration of controllers is:

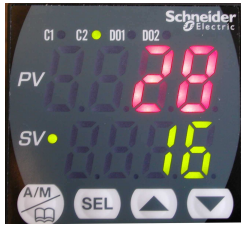
- Baud rate = 19200 B/s.
- Parity = Even.
- Address = 1.




If the product has been downloaded with a program where tabs are not activated, it will not be possible to access to the communication parameters from the front face.

REG 48 / 96

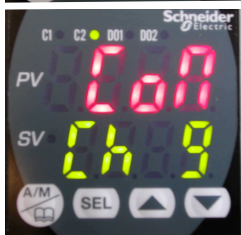
Check the communication parameters by front panel:




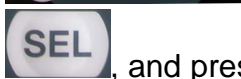
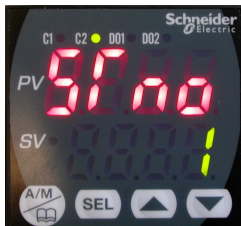
Press  until the next display:



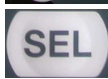



Press  to select Ch9:







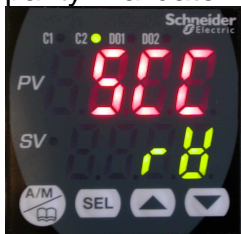
Press  until the next display:





Press , and  to change the MODBUS @. Validate with , and press 



Press , and  to change the MODBUS Baud rate and parity. Validate with , and press 



Press , and  to change the MODBUS permission Write/Read.

The original MODBUS configuration of controllers is:

- Baud rate = 19200 B/s.
- Parity = Even.
- Address = 1.

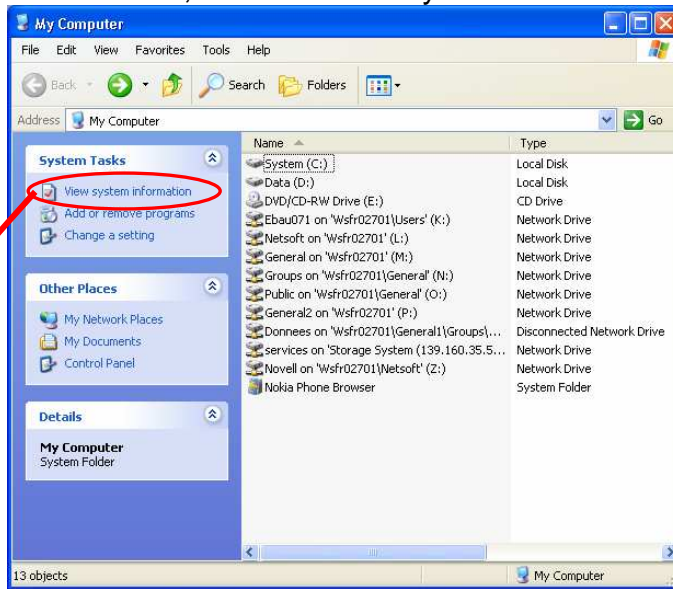


: If the product has been downloaded with a program where **STno** and **CoM** tabs are not activated, it will not be possible to access to the communication parameters from the front face.

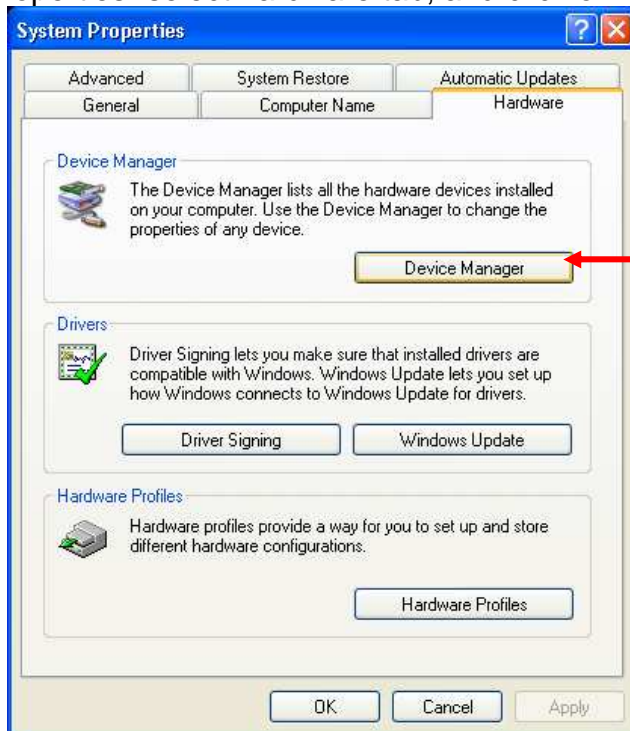
5. Software & PC configuration :

Port com #:

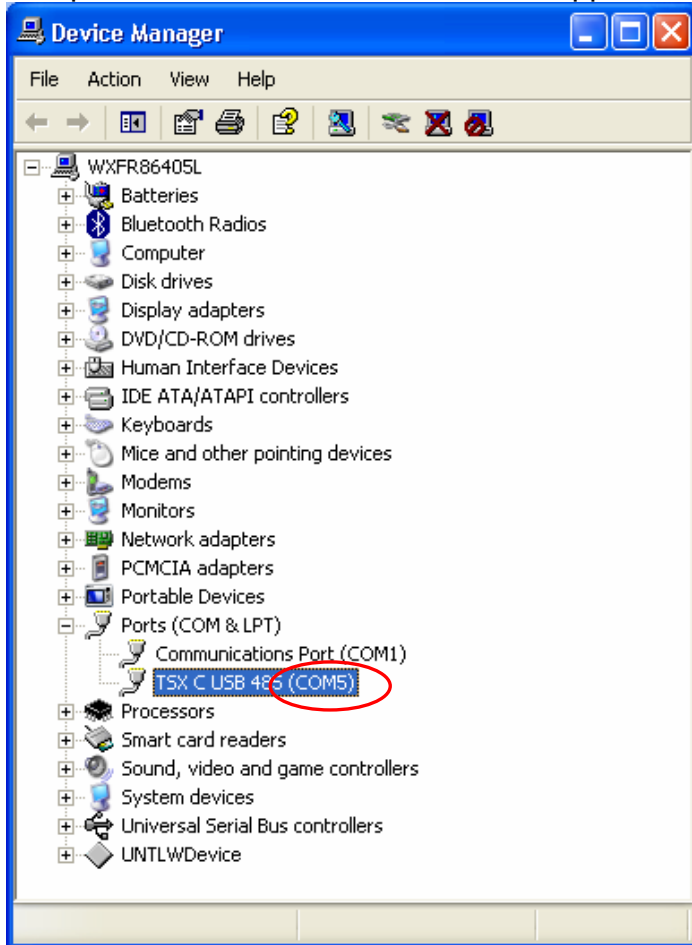
In "My Computer" window, click on "View system information":



In "System Properties" select hardware tab, and click on Device Manager :



The port com # linked to the converter appears:

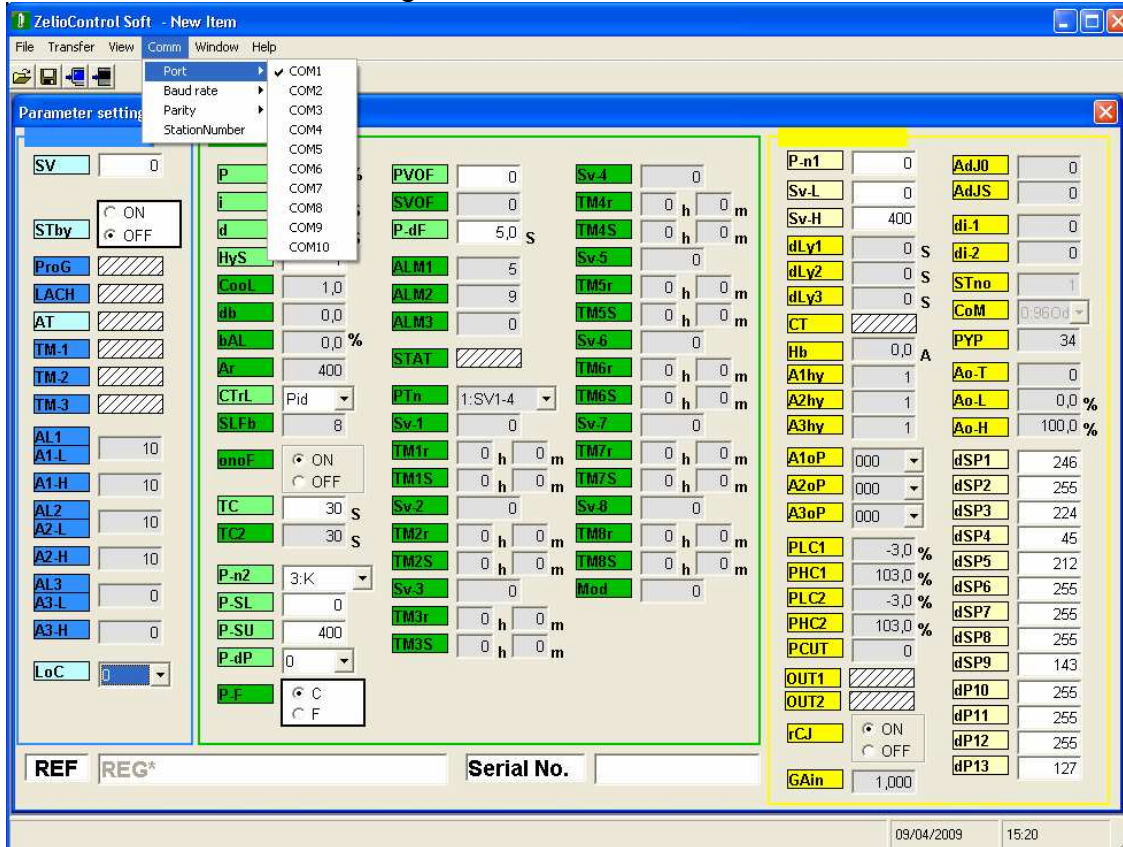


Windows XP is managing the communication number, and it must be checked.
If the COM # > 10, you can reassign it → Right click on the Ports of converter, and select “Properties” → Click on “Port settings” tab, and “Advanced” tab → select new COM #.

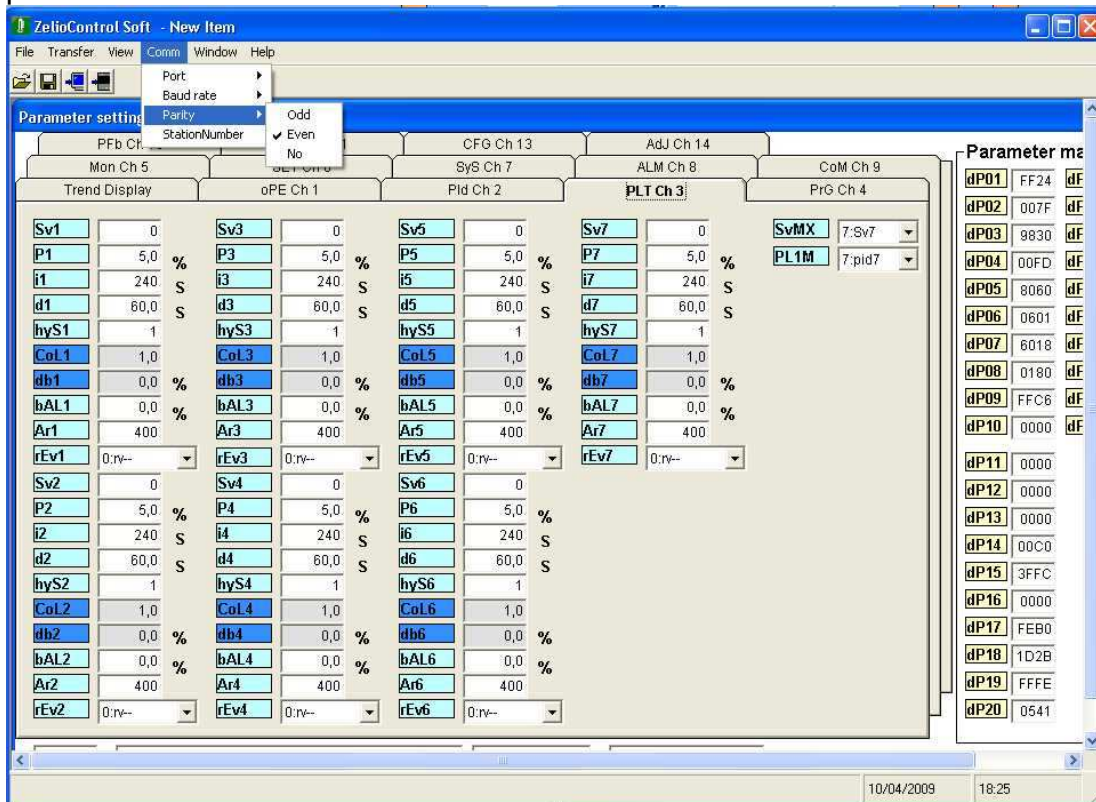
Double click on the icon  to start the software.
Select the type of controller that you want to configure:



In the menu Com , according to the PC com # select the same in the ZELIO SOFT:



Configure the Baud rate, Parity, and station number according to the controller MODBUS parameters.



By default, the station # is 248, which works with any equipment.

Make an upload to test the communication. If the configuration is correct, no error messages appear. The reference and serial number of the controller will be displayed at the bottom of parameters window:

