



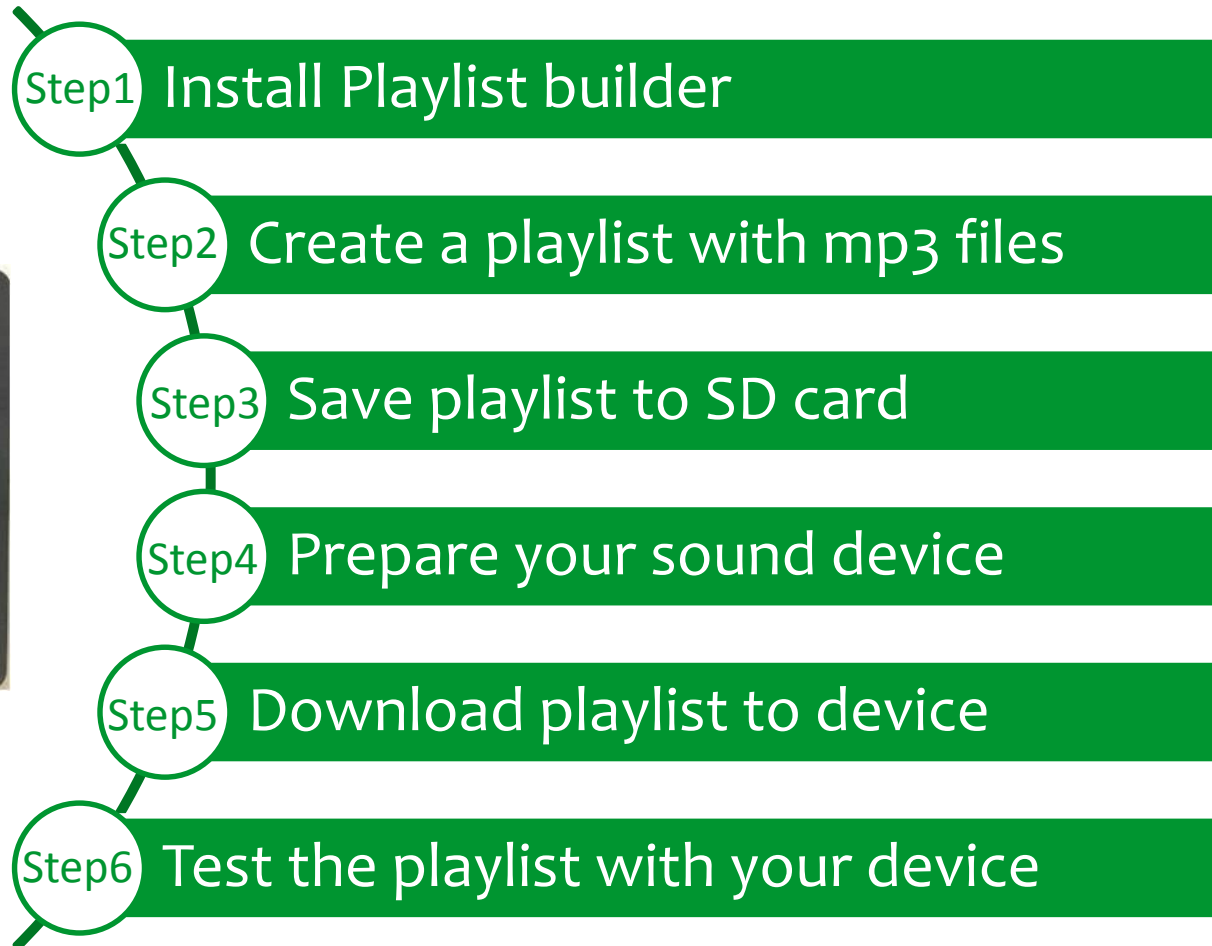
# Harmony XVSV Sound module set up

Presented by: Yuanhai(Ryan) Sun / Mar 2018

Life Is On

**Schneider**  
Electric

# Set up Procedures



# Preparation – Required tools for set up

- ✓ 1 XVSV product sample.
- ✓ 1 12Vdc~24Vdc or 100Vac~230Vac power supply, It depends on XVSV?B... or XVSV9M....
- ✓ 1 SD card with 4+ GB size. (Kingston, Panasonic, Toshiba, SanDisk and Sony are recommended)
- ✓ 1 PC (x86 or x64) with Windows operating system (WinXP, Win7, Win10).
- ✓ Playlist builder software from SE website.

# Step 1: Install Playlist Builder software

- Download “[PlaylistBuilderInstallerV1.0.2\(.7z\)](#)” file or later version from [SE website](#).
- Unzip installer file and click “**setup.exe**” to start installation.



- Click “next”, “next” to finish installation. You will see application icon on desktop.



Playlist Builder

# Step 2: Create a playlist with Playlist builder

➤ Create a project and select “XVSV” model.

➤ Configure frames with mp3 file for your required channels.

➤ Supported max. number of channels: channel 1~16

➤ MP3 format requirement:

Sample Rate: 48khz,44.1khz,32khz,22.05khz,16khz,11.025khz,8khz.

Bit Rate: 128kbps, 64kbps, 32kbps.

➤ Configure playlist setting

➤ **Signal Input Mode:** to specify usage of signal wires.

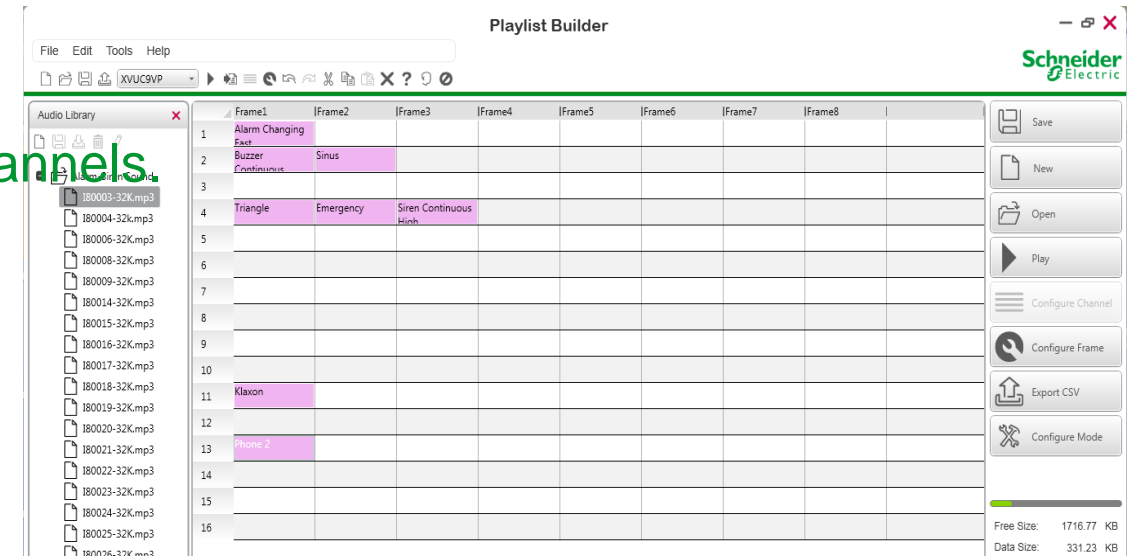
There are six types of Signal Input Modes (No Change, 4CH, 4CH Suppress Stop, 5CH Suppress, 5CH Stop, 6CH).

➤ **Operation Mode:** to specify how to control channel (bit input or binary input) and play priority.

There are eight types of Operation Modes (Basic mode, After Priority Mode, Binary Mode, Level Mode,...).

➤ **Volume Reduction Value:** Only available when suppress mode is enabled

This function reduces the sound volume (-5db ~ -40db) when a Sound Suppress signal is received.



# Step 2: Create a playlist with Playlist builder

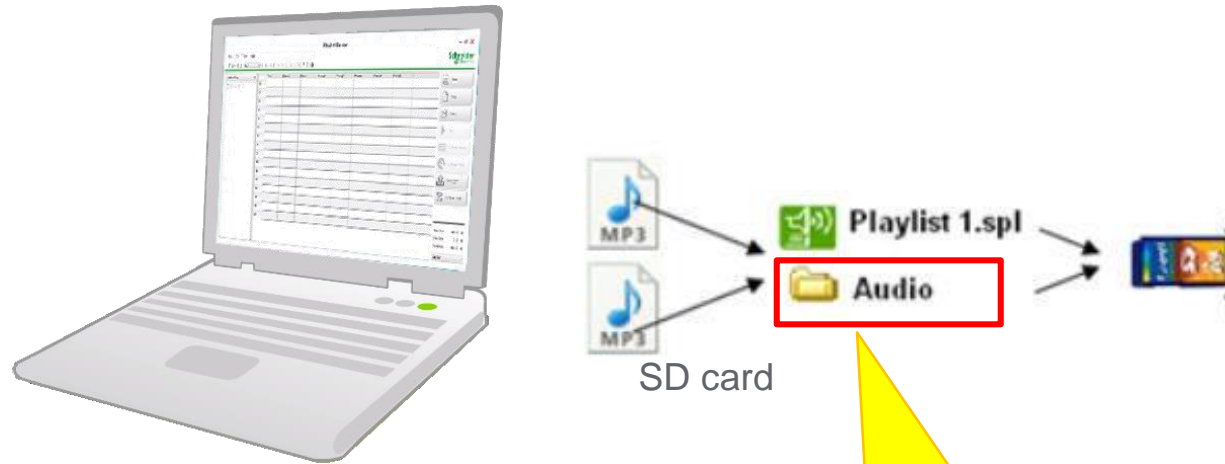
## ➤ Signal input mode

Wire Color	Signal Input Mode			
	4CH Suppress Stop Mode	5CH Suppress Mode	5CH Stop Mode	6CH Mode
Green	CH1	CH1	CH1	CH1
Yellow	CH2	CH2	CH2	CH2
Brown	CH3	CH3	CH3	CH3
Blue	CH4	CH4	CH4	CH4
Purple	Sound Suppress	CH5	CH5	CH5
Gray	Stop	Sound Suppress	Stop	CH6

# Step 2: Create a playlist with Playlist builder

Operation Mode	Input mode	Channel number	Play Priority when 2+ inputs at same time
Basic Mode	Bit input	4-6 channels	Play smallest channel number
One Shot Mode	Bit input	4-6 channels	Memorizes all input signals that are enabled and plays them in the order they are received.
After Priority Mode	Bit input	4-6 channels	The last enabled input signal has the highest priority.
Binary Mode	Binary input	15-63 channels	Similar to Basic Mode, but Channel is selected by a 4 to 6 bit binary code and Stop signal is handled differently.
One Shot Binary Mode	Binary input	15-63 channels	Similar to One Shot Mode, but Channel is selected by a 4 to 6 bit binary code.
After Priority Binary Mode	Binary input	15-63 channels	Similar to After Priority Mode, but Channel is selected by a 4 to 6 bit binary code and Stop signal is handled differently.
Level Mode	Bit input	4-6 channels	Current output Channel audio has the highest priority and the audio repeats so long as the input signal is on.
Binary Level Mode	Binary input	15-63 channels	Similar to Level Mode, but Channel is selected by a 4 to 6 bit binary code.

# Step 3: Save playlist to SD Card



Don't forget to copy  
"Audio" folder as well.

## Recommended SD card types:

**Kingston** : 4 GB Class 10, 16 GB Class 4

**Panasonic** : 4 GB Class 4 / Panasonic : 4 Go Classe 4

**Toshiba** : 4 GB Class 4 / Toshiba : 4 Go Classe 4

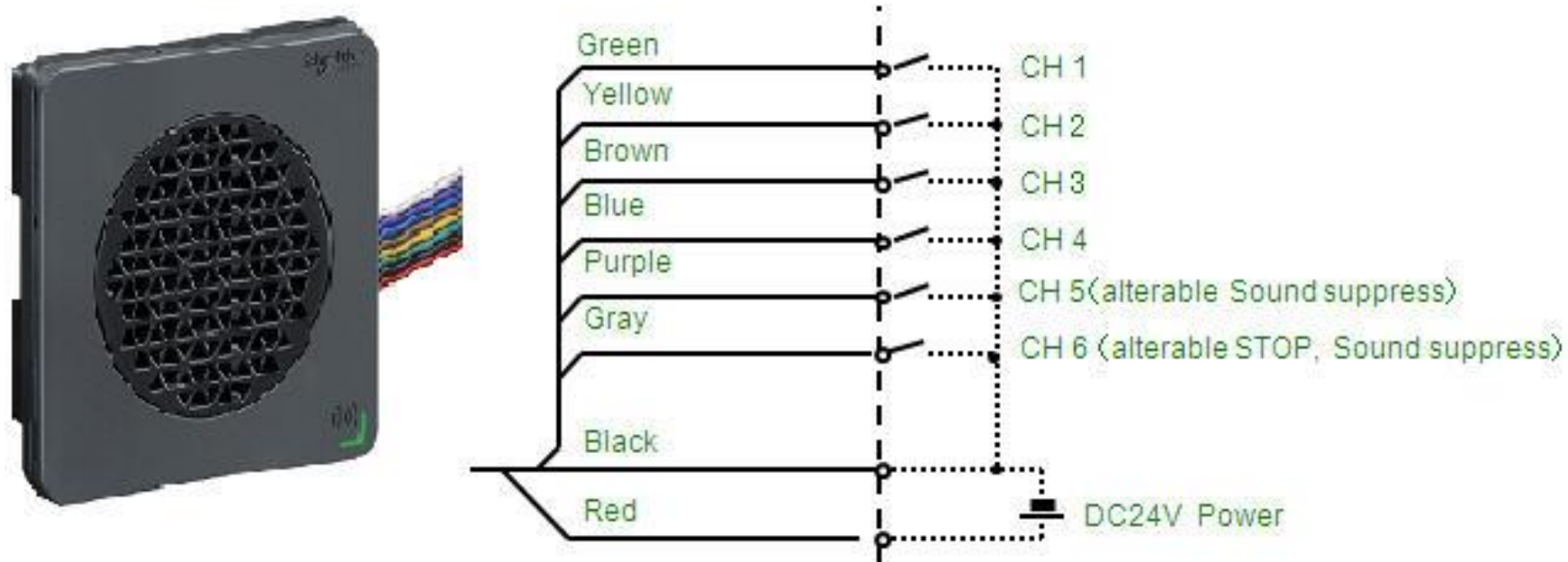
**SanDisk** : 8 GB Class 6 / SanDisk : 8 Go Classe 6

\*\*Standard SD Interface(Verified with above SD card)

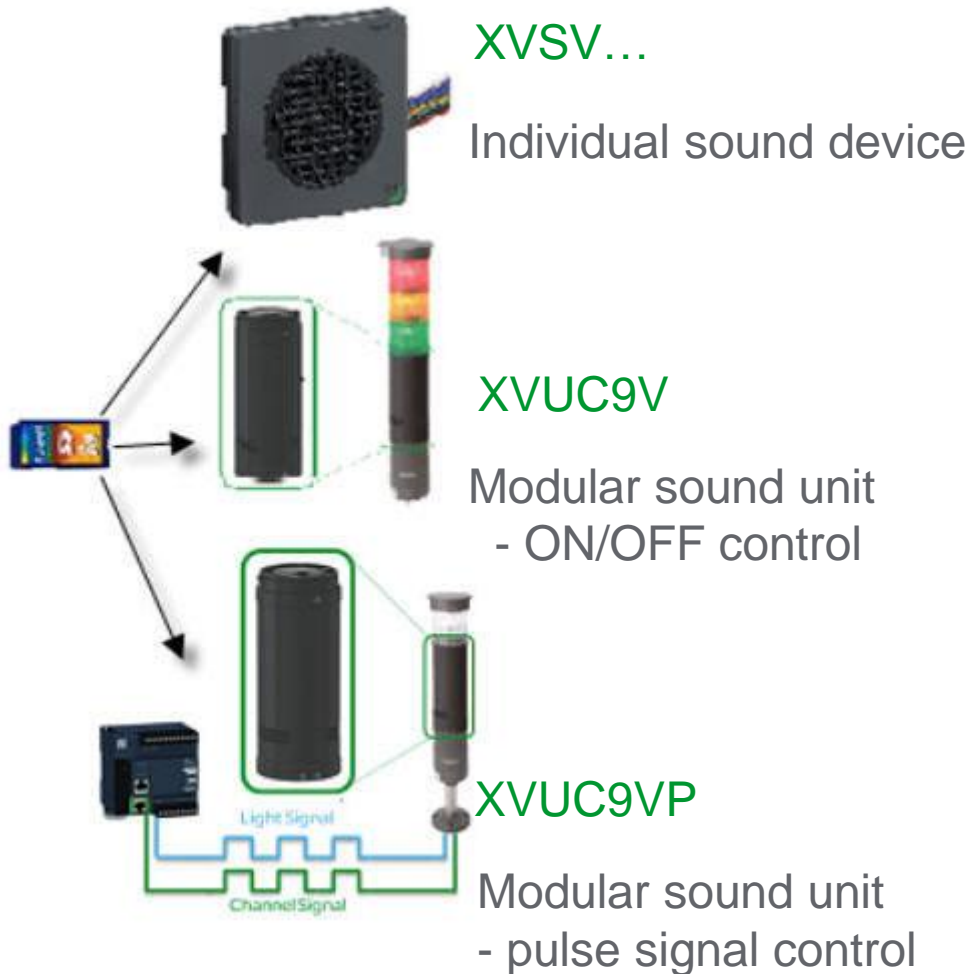
**Tips:** Before you insert the SD Card into the audio device, **make sure there is only one Playlist file** in the root directory of the SD Card. Otherwise, the audio device is not sure which file is playing

# Step 4: Prepare your sound device

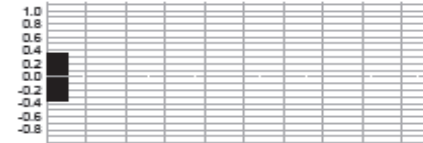
## ➤ Wiring XVSV sound device to power supply



# Step 5: Download playlist to device



1. When SD card is inserted, sound 'Pi' played



0.1 sec x1 time

2. When succeeds in being transferred into the product, sound "Pii..." played



1.5 sec x1 time

Tips: If sound "PiPiPiPi" (0.1 sec\*4 times) played, indicates error happened

Potential causes:

- ✓ No playlist in SD card is detected.
- ✓ No correct playlist (version, model) is detected.
- ✓ SD card type is not supported or SD card is broken.
- ✓ The SD card is extracted during transmission.

Tips: If sound "PiiPiiPii" (0.5 sec\*3 times) played, indicates mp3 data fails to be transferred to device.

Tips: Don't forget to remove SD card from device.

# Step 6: Test your playlist with device

After finished downloading, please validate your playlist and setting.

- ✓ To check if the mp3 sound of each channel can play correctly.
- ✓ To check if the device can work as you specified signal input mode.
- ✓ To check if the device can work as you specified operation mode.
- ✓ To check if the device can work as you specified volume reduction value.

**Tips:** We strongly recommend you use the mp3 files from our library to validate your procedure.

Life Is On



**Schneider**  
 Electric