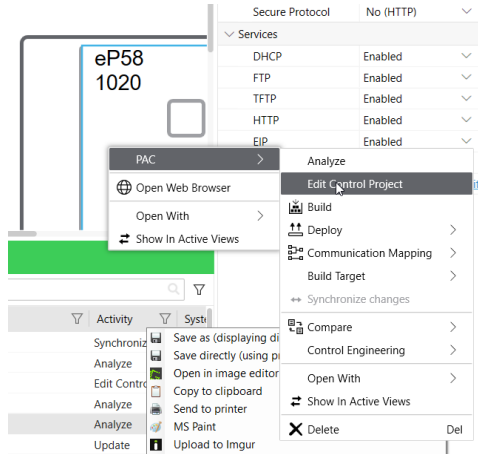


How to configure BMEAHI0812 and BMEAHO0412 using Topology Manager (V15.3):

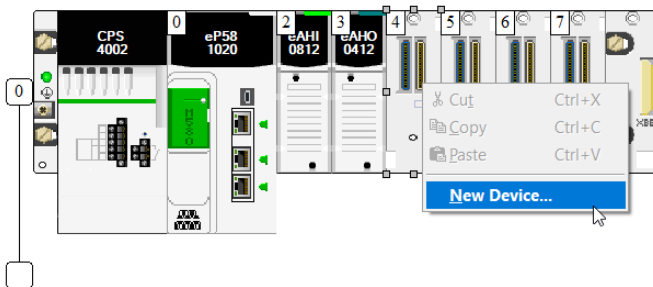
Once your CPU is added and configured in your Project in Topology Manager, follow the below procedure to configure your HART modules :

1- Edit Control Project of your CPU :

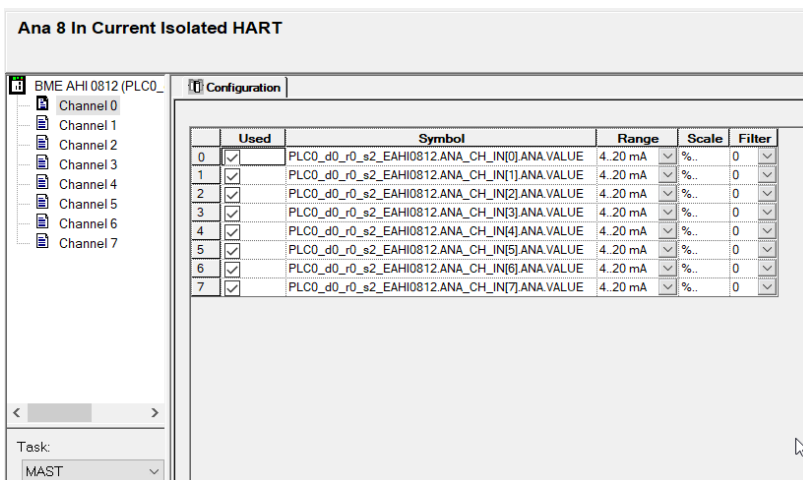


2- Inside the view, add in your rack/drop the HART modules (same steps as in CE Classic):

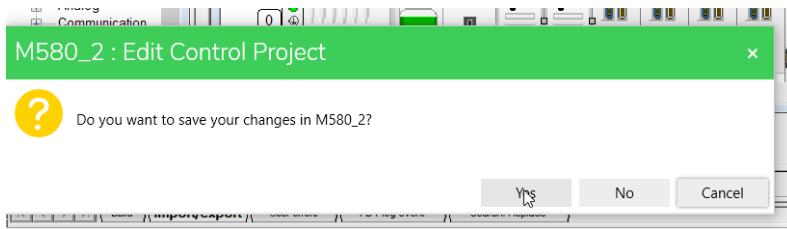
Under PLC bus (or EIO bus) add the modules



If needed, modify the configuration of the channels in this view by double clicking the HART module:

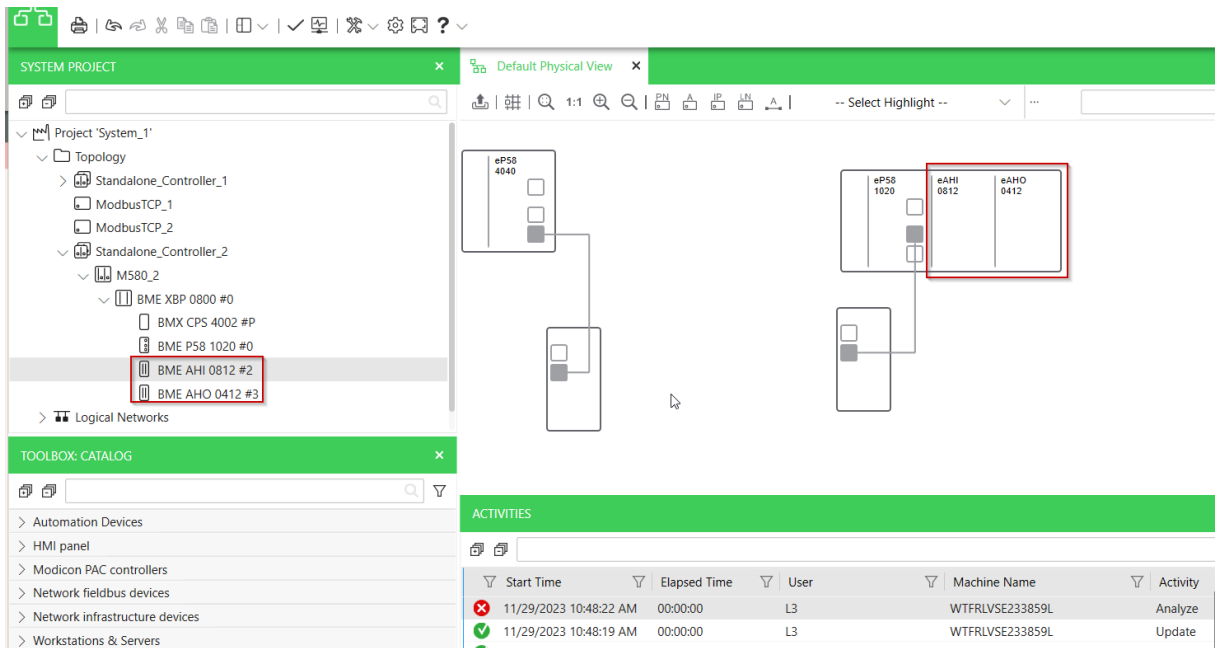


3- Build and save the changes :

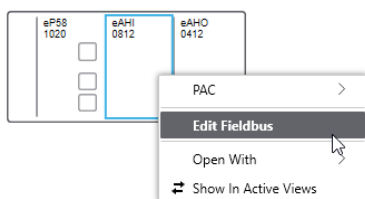


4- Modify the fieldbus configuration of your HART module:

In the Physical View (or under Project>Topology>Your CPU), the HART modules are now displayed

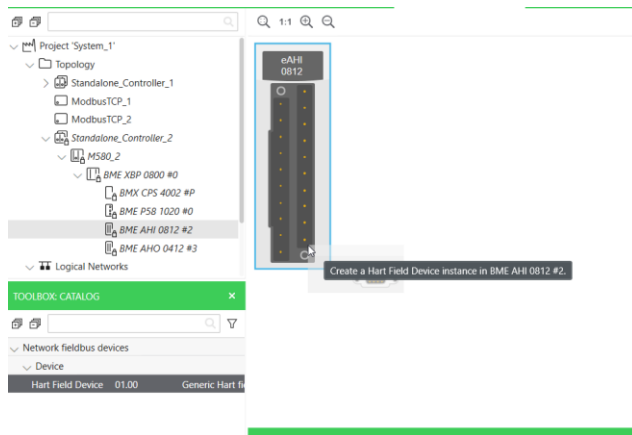


Right click and select Edit Fieldbus:

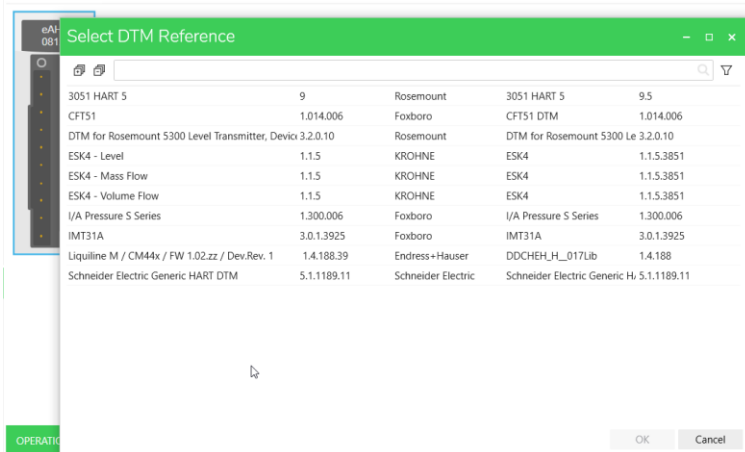


5- Add HART devices under each HART modules:

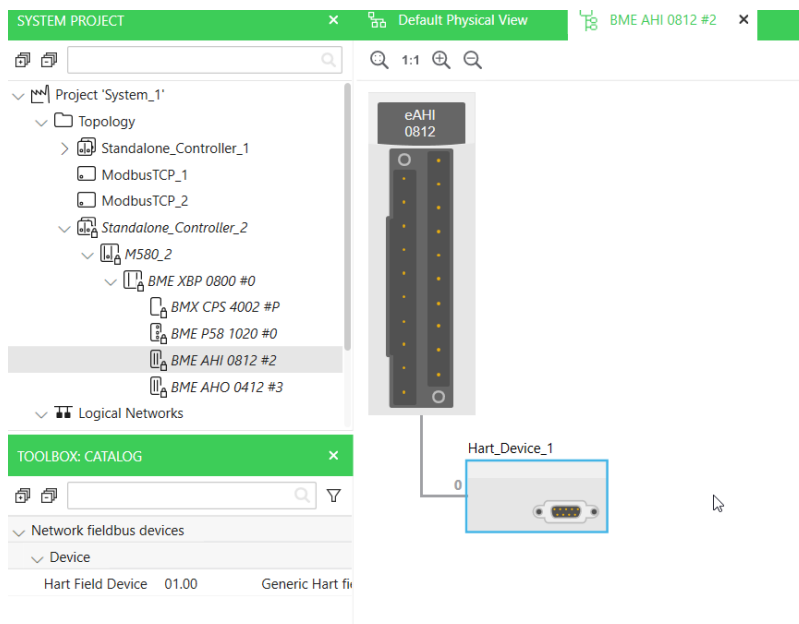
Drag and drop the Hart Field Device which has appeared in the Toolbox view to your HART module:



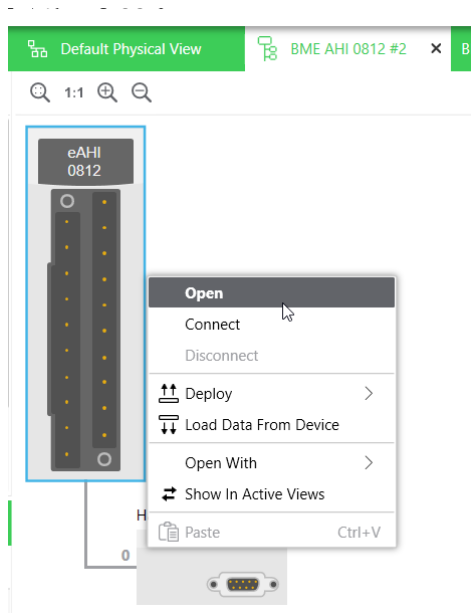
A pop up will be displayed to choose the HART device available in your DTM catalog:



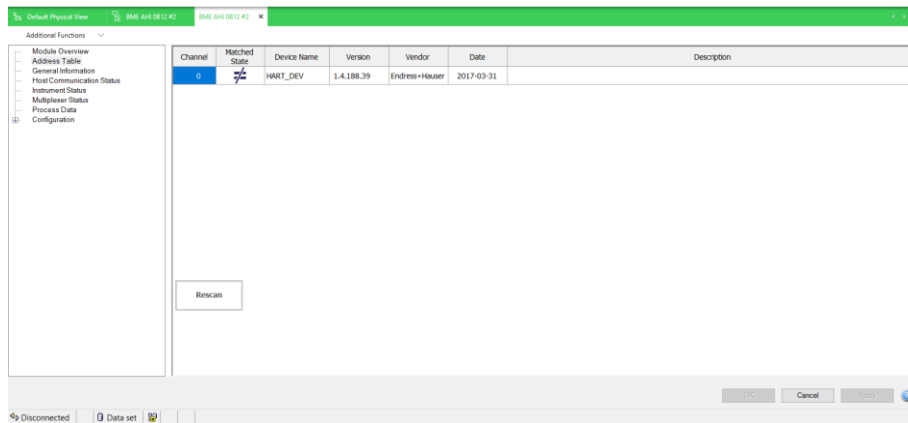
The selected Hart device will be added under the HART module:



6- Configure the DTM according to your requirements:
 Modify the DTM by right clicking the module and select Open



DTM configuration page will be displayed, you can modify it as in CE Classic:



If you are connected online to the CPU, you can do a Transfer of the configuration:

