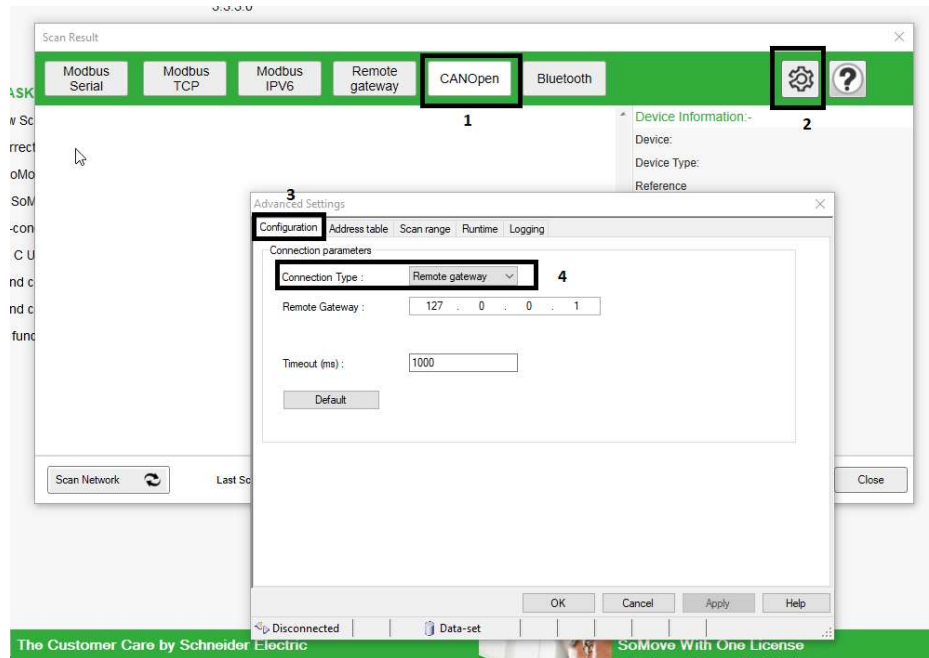


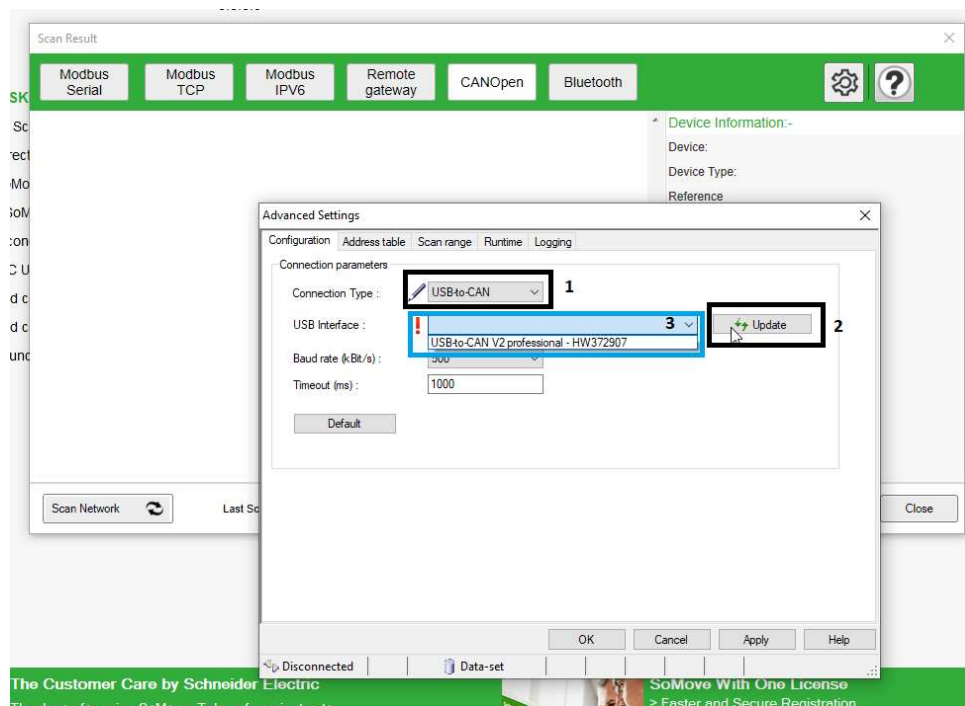
On ATV320 I set by Keypad CANopen parameters:

ADCO=1(ATV320 CANopen address) and BDCO=1Mo (CANopen Speed), I power cycle ATV320.

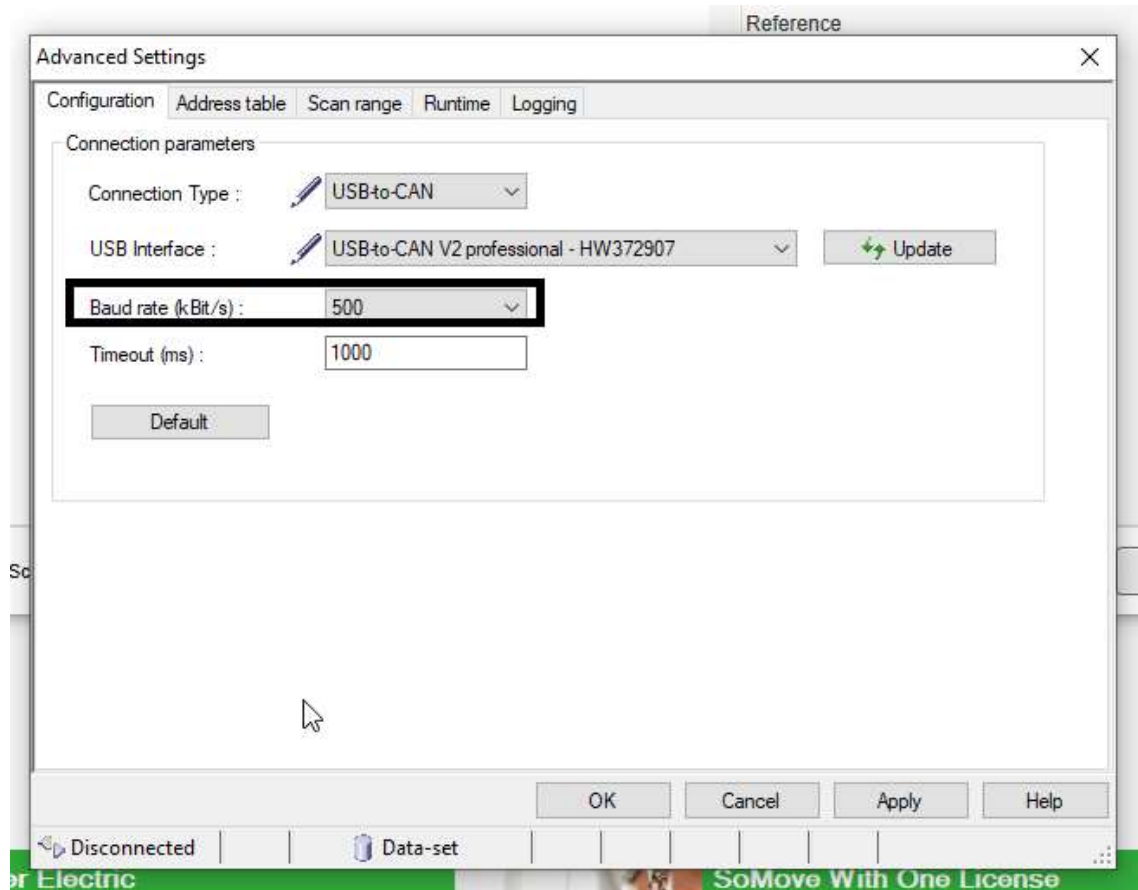
I open SoMove, I click on CANopen icon, the setting (see Square with number 2). Then I click on configuration tab and I change “Connection Type” Remote Gateway



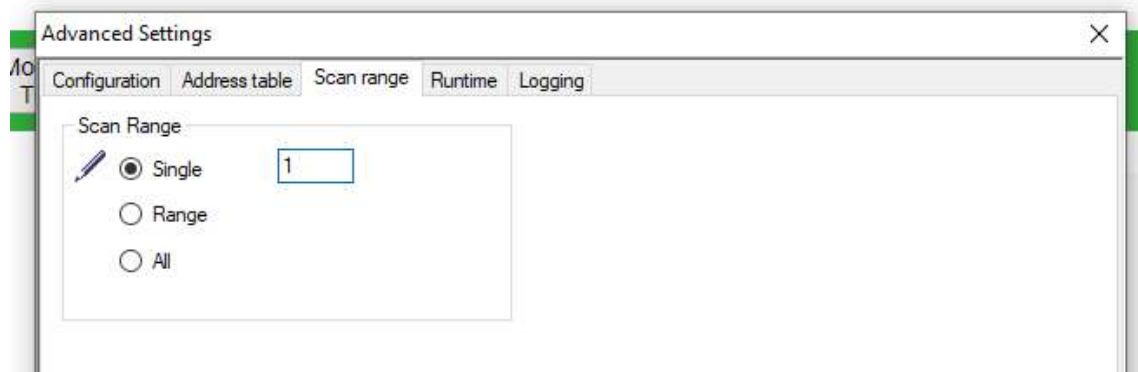
Of course the USB CAN dongle must be plugged. Change “Connection Type” from Remote Gateway to “USB Can” connection. Click on update button and choose CAN interface :



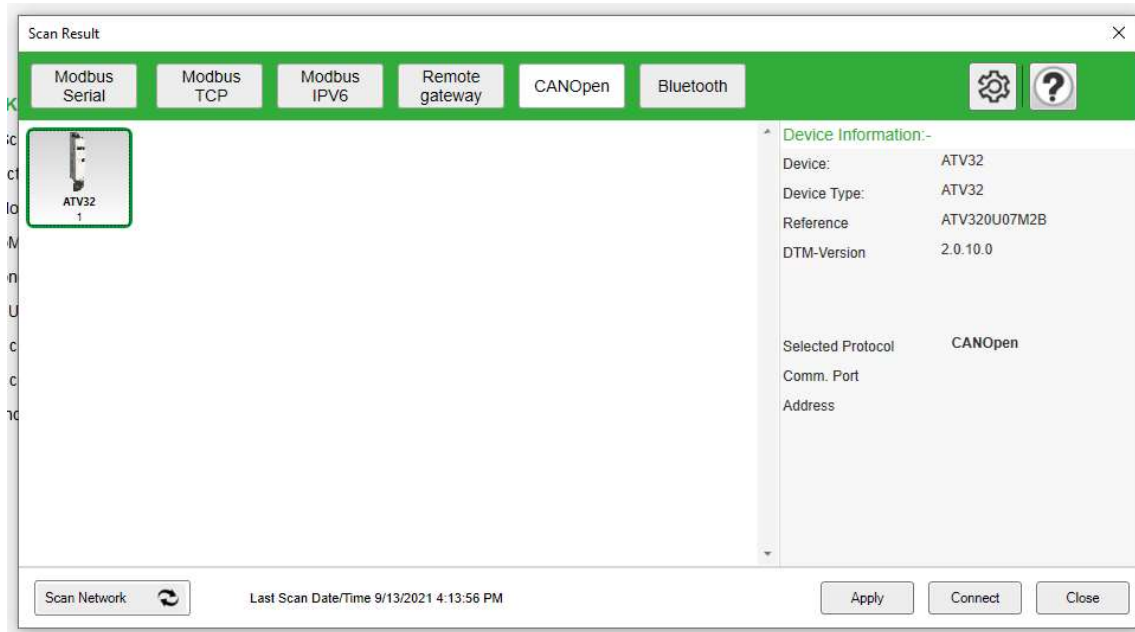
Set good baudrates: (in my example the baudrates is 1MO)



If you have only one drive for example, you can change scan range to Single and put CANopen address of the drive (Here I have ATV320 with ADCO=1) :



Click on "OK" and Scan network:



If you have a dongle CANopen with 2 RJ45 CAN (CAN1 and CAN2).

You must use CAN1 port:

