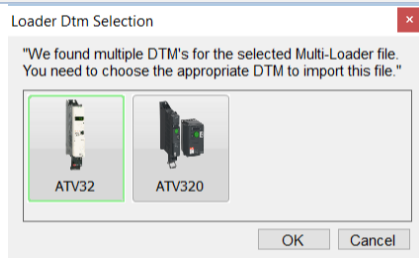
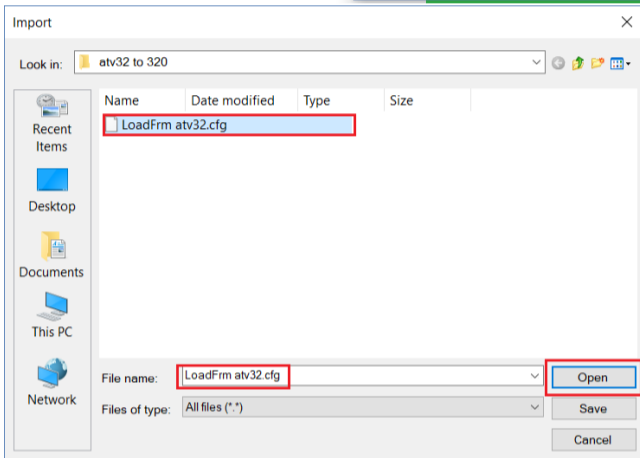
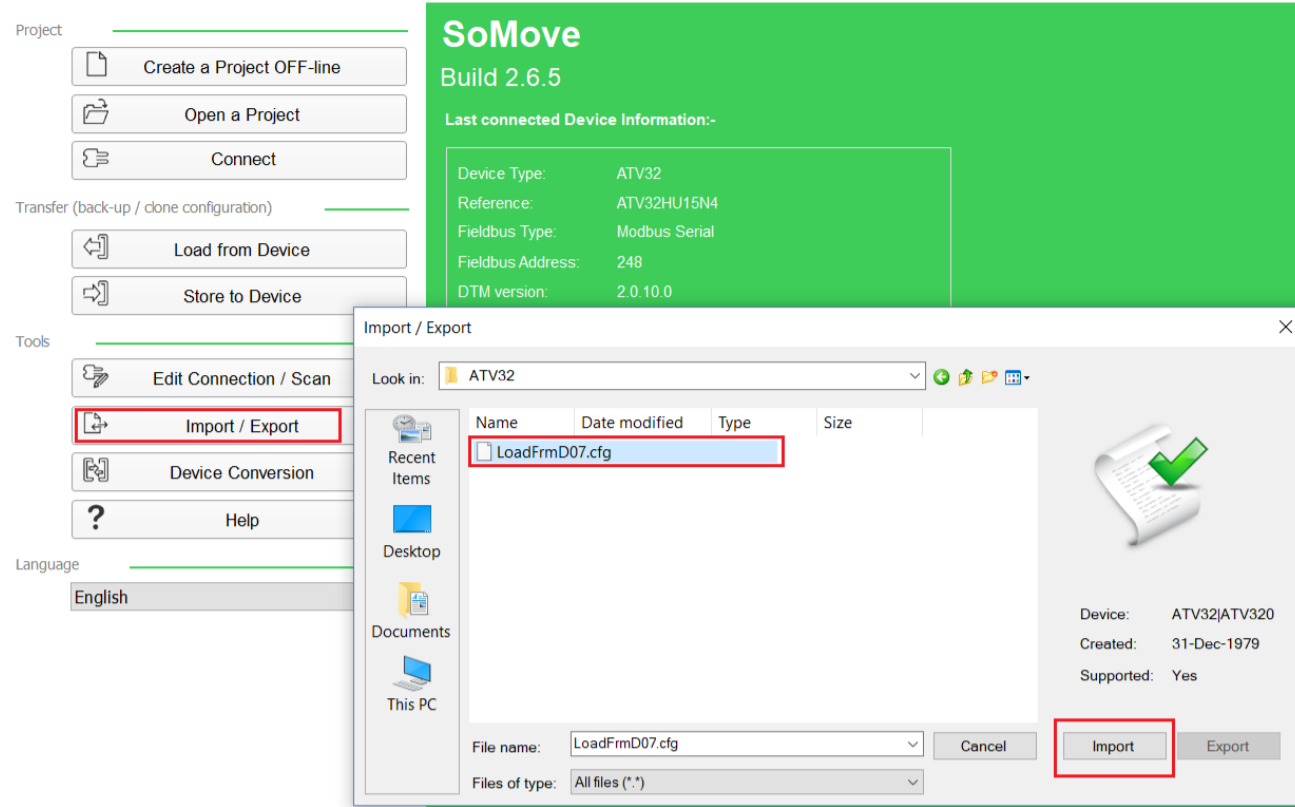
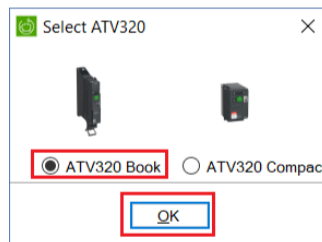
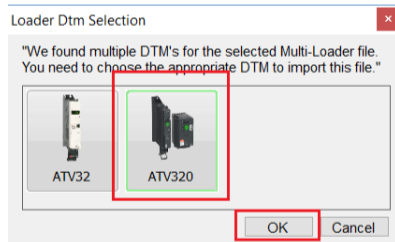


1. Upload the application from ATV32 to Multiloader (.CFG file saved on SD card)
2. Insert the SD card to the PC
3. Run SoMove – do not open/create any project.
4. Import/convert the .CFG file from SD card to SoMove:

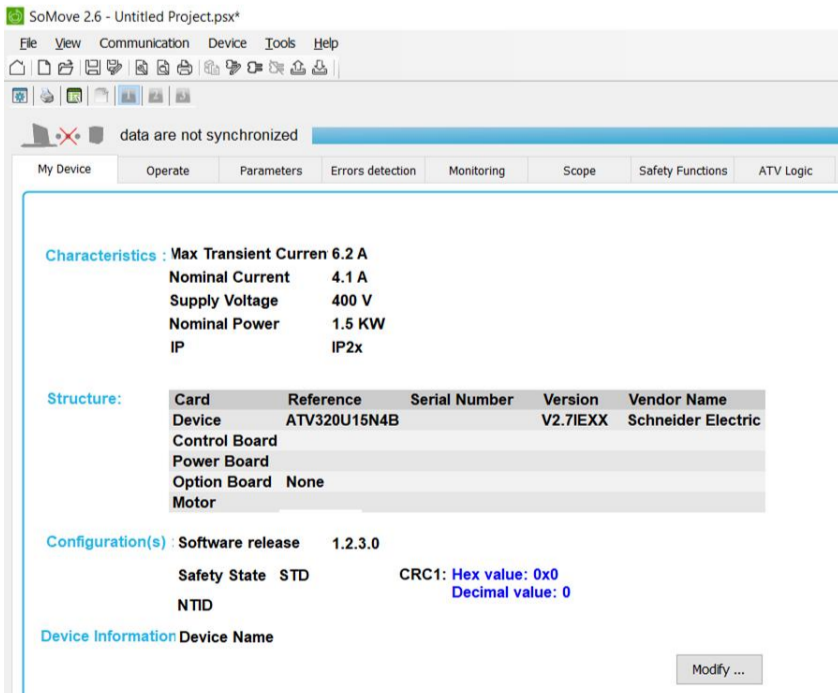
SoMove 2.6



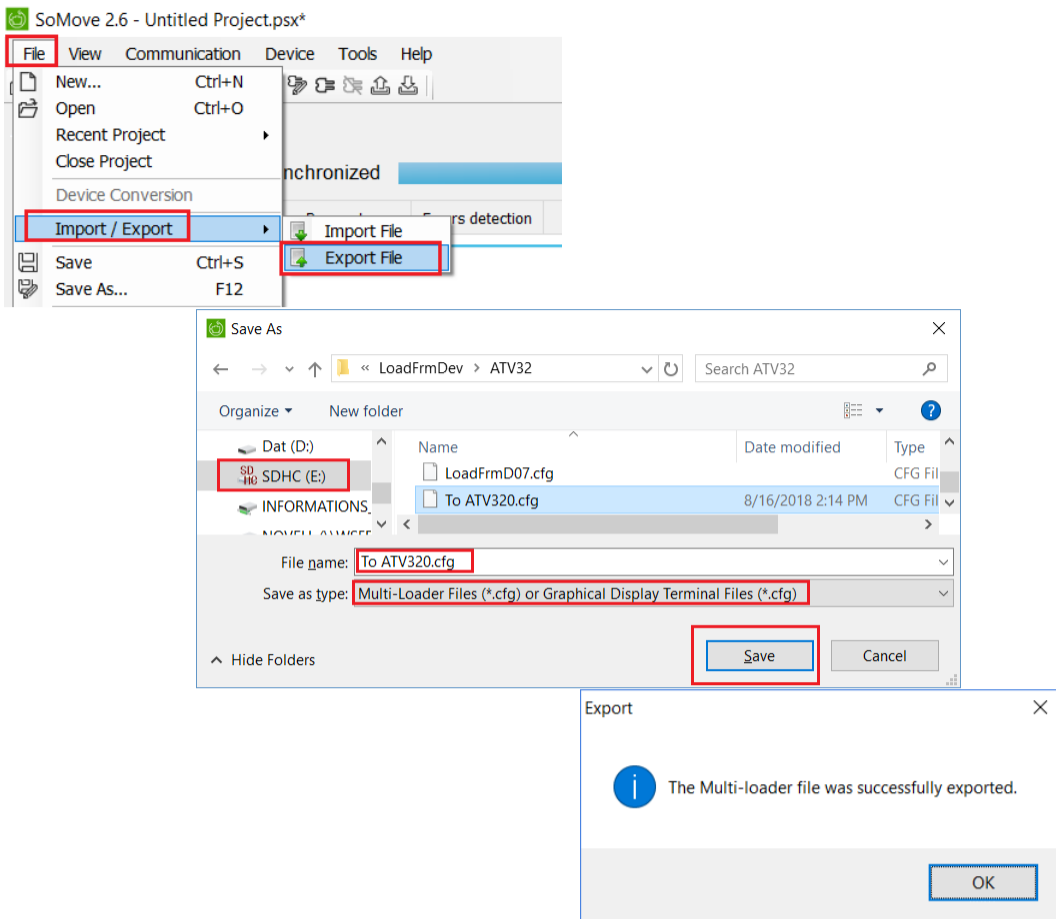
Select ATV320:



Conversion to ATV320 is done:



5. Export and save the Multiloader .CFG file to the SD card:



6. Insert SD card to Multiloader and connect it to ATV320
7. Download the application from Multiloader to ATV320.