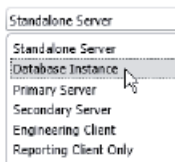


Power Monitoring Expert 7.2.2 – Migrating from a standalone to distributed architecture

1-Run the Power Monitoring installation on the new database server

For **Database Instance:**

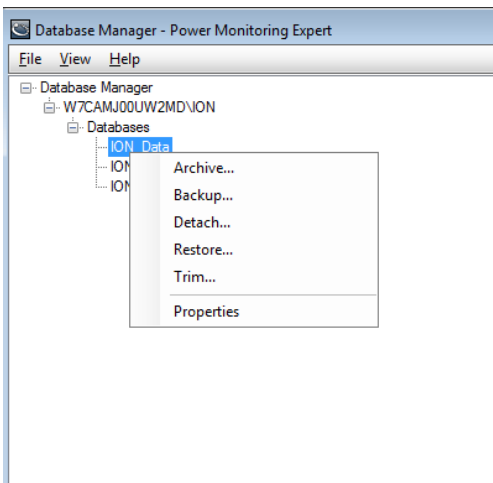
Setup Type



Preparation:

On Primary server:

1. Shut down all ION and =S= services
2. Detach all databases (or take backups). You can utilize the PME database manager



3. Detach any archived databases that you want to move to the new database server
4. Gather the files that you will need to copy over to the new server
 - a. The databases, either the .mdf and .ldf files if you have detached the databases, or the backup files if you have created backups

On the new distributed server:

5. Shut down all ION and Schneider Electric services
6. Detach all four PME 7.2.2 databases and move the files aside (created by the database installer).
7. Attach the database files copied over from the standalone server

Re-register Log inserter and Query Service :

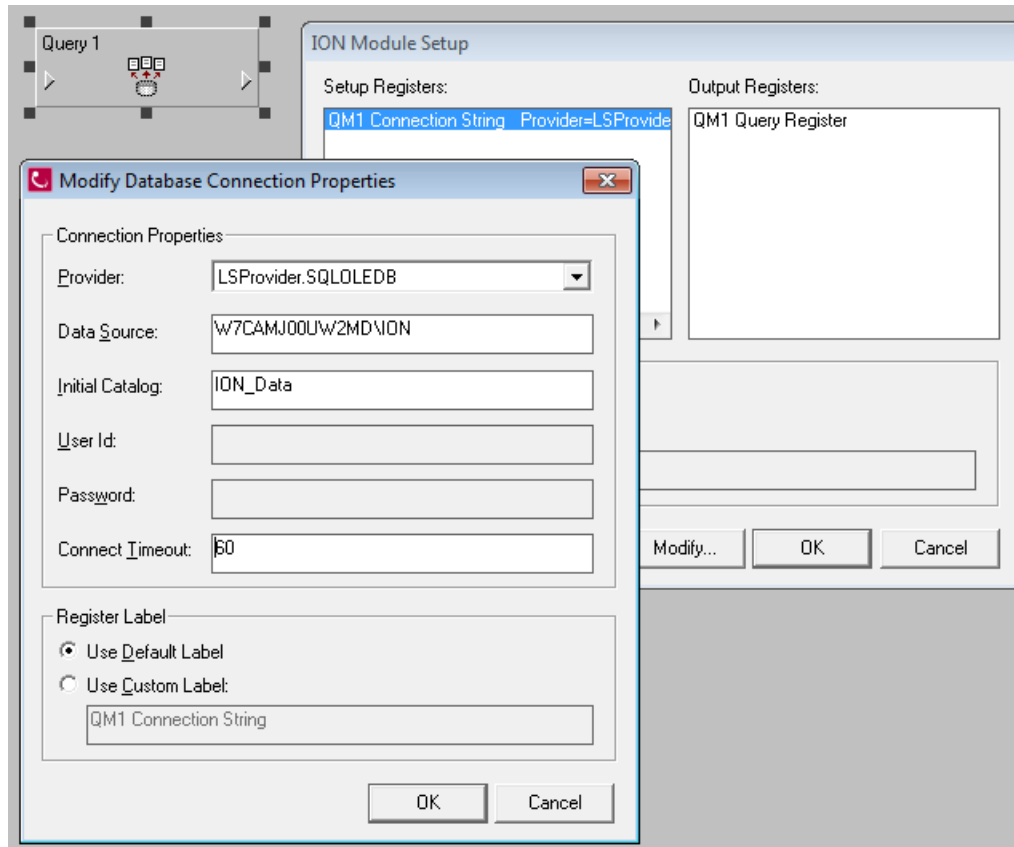
1-Start Designer.

2-Open the LOGINserter on your application server, and open **Log Acquisition Modules**.

3- Open the Toolbox from the menu bar: check Options -> Show Toolbox. Right-click on the LogAcquisition 1 module to edit it.

4- Double-click on the LAM1 Data Source Setup Register and change the Data Source to the name of the SQL Server instance being used on the new database server.

5- Repeat the same steps for the Query Server



Edit the registry file

1. Edit the file 'databaseregistry.reg' in the \Power Monitoring Expert\config directory to update the database instance to the new database server name. This is necessary in case any client or secondary machines are added to the system. This could also be done manually using regedit and navigating to the following :
HKEY_LOCAL_MACHINE\SOFTWARE\Wow6432Node\Schneider Electric\Ion Enterprise\7.2.2\
Change IONServer, NOMServer, SYSLOGServer to the new database instance

(Default)	REG_SZ	(value not set)
IONConnectionTimeout	REG_DWORD	0x0000003c (60)
IONInitialCatalog	REG_SZ	ION_Data
IONServer	REG_SZ	W7CAMJ00UW2MD\ION
NOMConnectionTimeout	REG_DWORD	0x0000003c (60)
NOMInitialCatalog	REG_SZ	ION_Network
NOMServer	REG_SZ	W7CAMJ00UW2MD\ION
SYSLOGConnectionTimeout	REG_DWORD	0x0000000f (15)
SYSLOGInitialCatalog	REG_SZ	ION_SystemLog
SYSLOGServer	REG_SZ	W7CAMJ00UW2MD\ION

- Restart all the ION and Schneider Electric services.

Post Migration Checks:

- Check system log in the Management Console for errors.
- Log in to Web Applications
- Check Dashboards and Tables
- Check report subscriptions
- Check the Vista diagrams and correct any Query Server or VIP links as necessary.