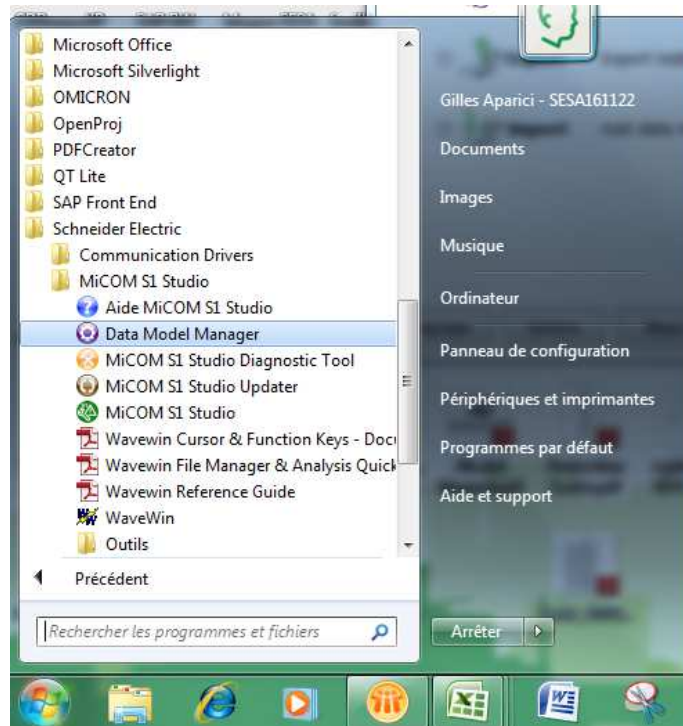


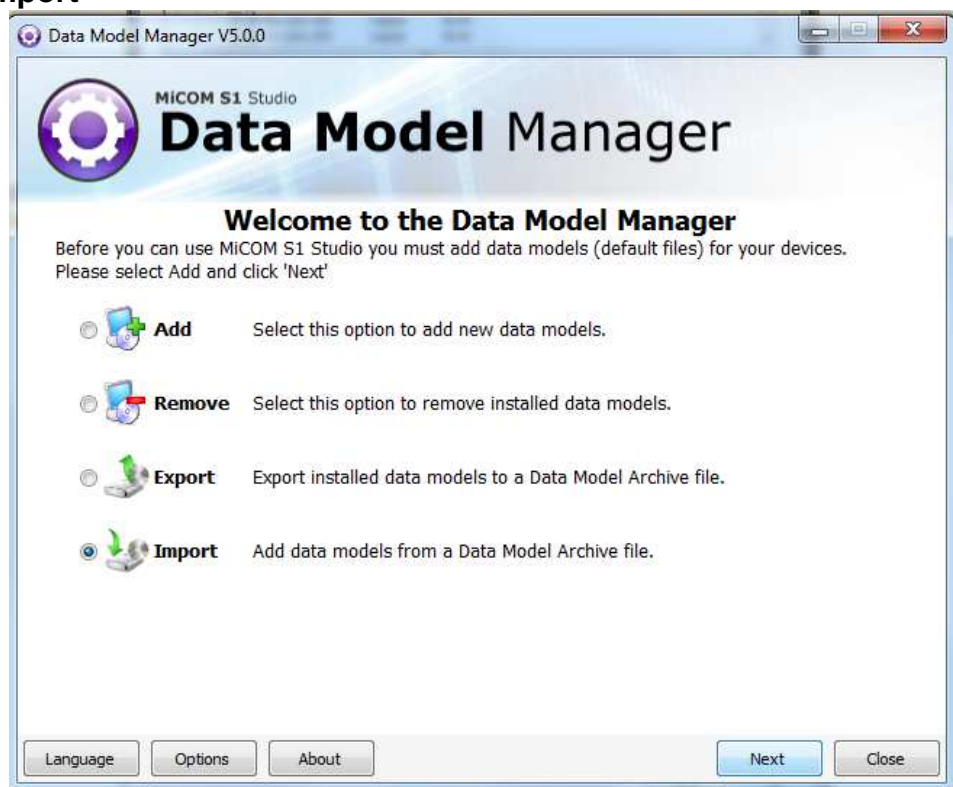
import from folder MiCOM Data Models

1/ Open Data Model Manager

On your PC open the Data Model Manager application (supplied with your MiCOM S1 Studio)
Don't forget to close your MiCOM S1 Studio if application opened !

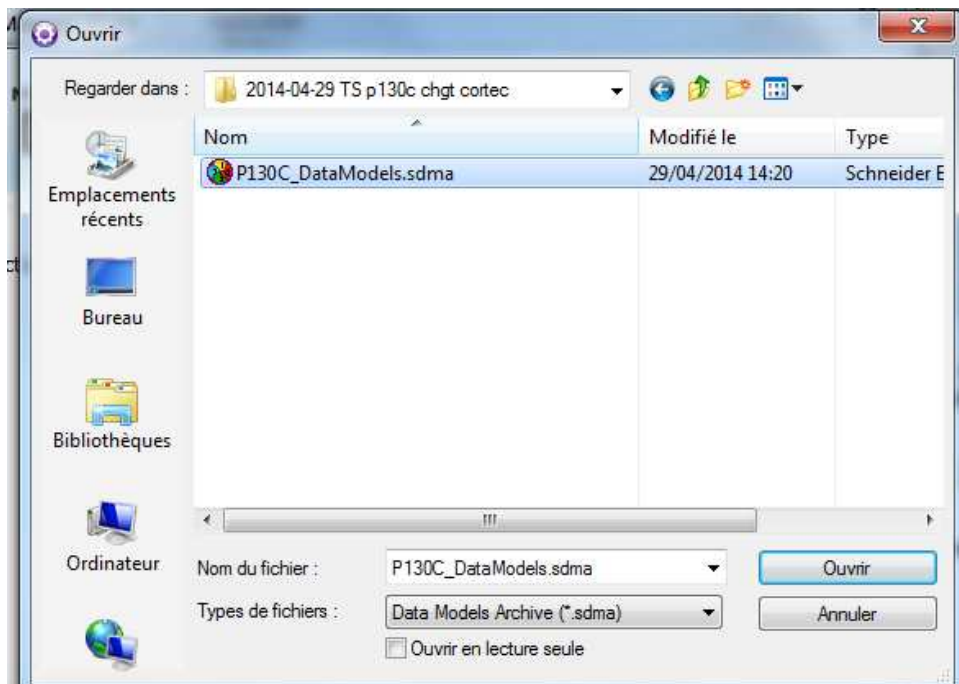


2/ select Import



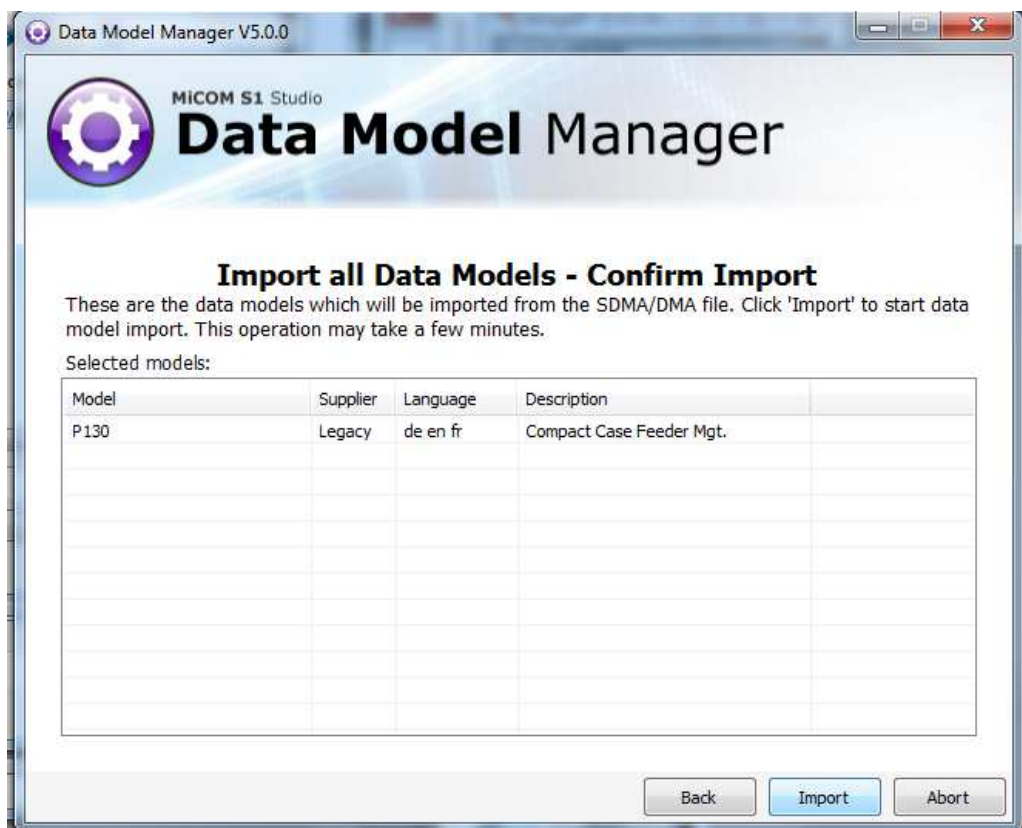
import from folder MiCOM Data Models

3/ Select « browse » and keep the sdma file of your data model



import from folder MiCOM Data Models

4/ Select All (or selected if you dont want all Data Models of folder)
And Import



**import from folder
MiCOM Data Models**

5/ When finished, select OK, then CLOSE the Data Model Manager to be able to use MiCOM S1 Studio

