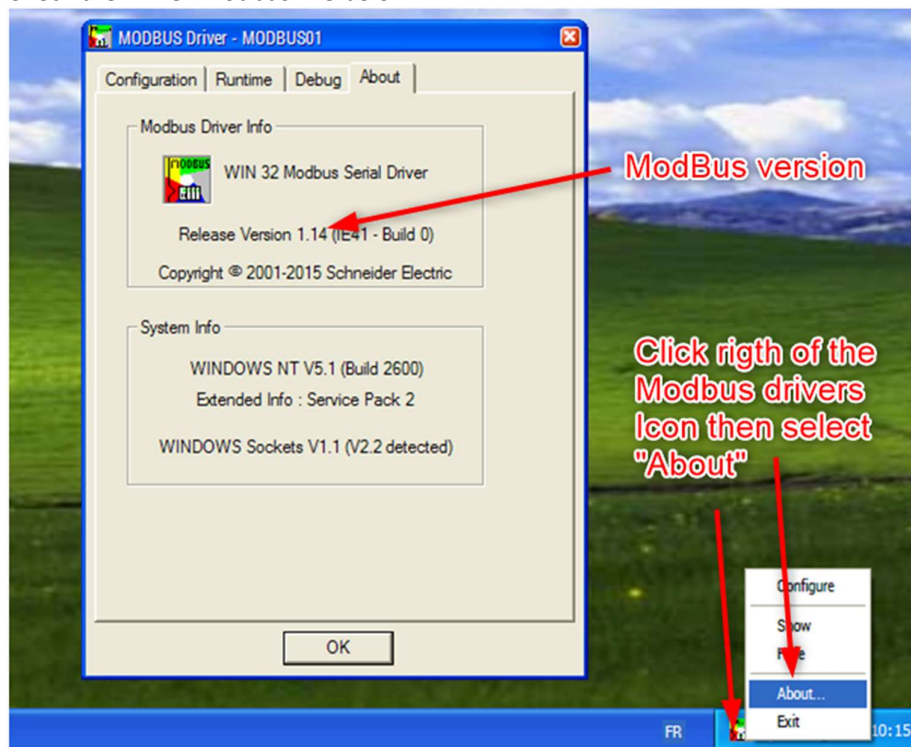


- 1) Explanations  
SFT2841 works on Windows XP with driver Modbus version 1.14.  
If you haven't the driver Modbus version 1.14 it will be needed to install it.  
See the process below.
- 2) Installation of SFT2841
- 3) Check the Driver Modbus like below



- 4) If Modbus driver version is 1.14 nothing to do, you can use SFT2841
- 5) If the serial Modbus driver icon doesn't exist or the version is different, the installation of the SchneiderModbusDriverSuite\_14.4 is needed.  
The file to install is: SchneiderModbusDriverSuite\_14.4.exe.  
I put it in a box here is the link to download it :  
<https://schneider-electric.box.com/s/jrczcpql65xuc3j4lilbiba5qbg7mpag>  
  
Download and unzip it then install it by double click on the SchneiderModbusDriverSuite\_14.4.exe file.
- 6) Restart the Computer
- 7) Now you should able to use SFT2841 with Sepam.