

HOW TO CREATE AN OFFLINE INSTALLATION OF LEXIUM CT

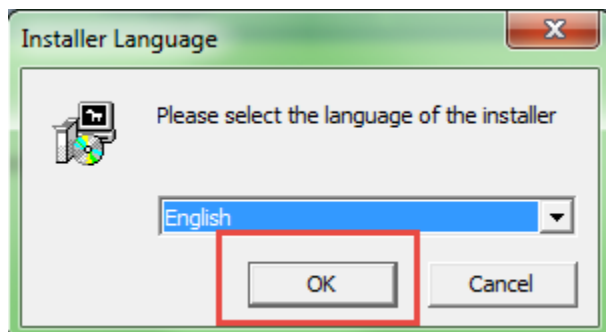
Below are the steps on how to create an offline installation of Lexium CT:

Step 1 - Download the LexiumCTInstall.exe from www.schneider-electric.com or from the following link:

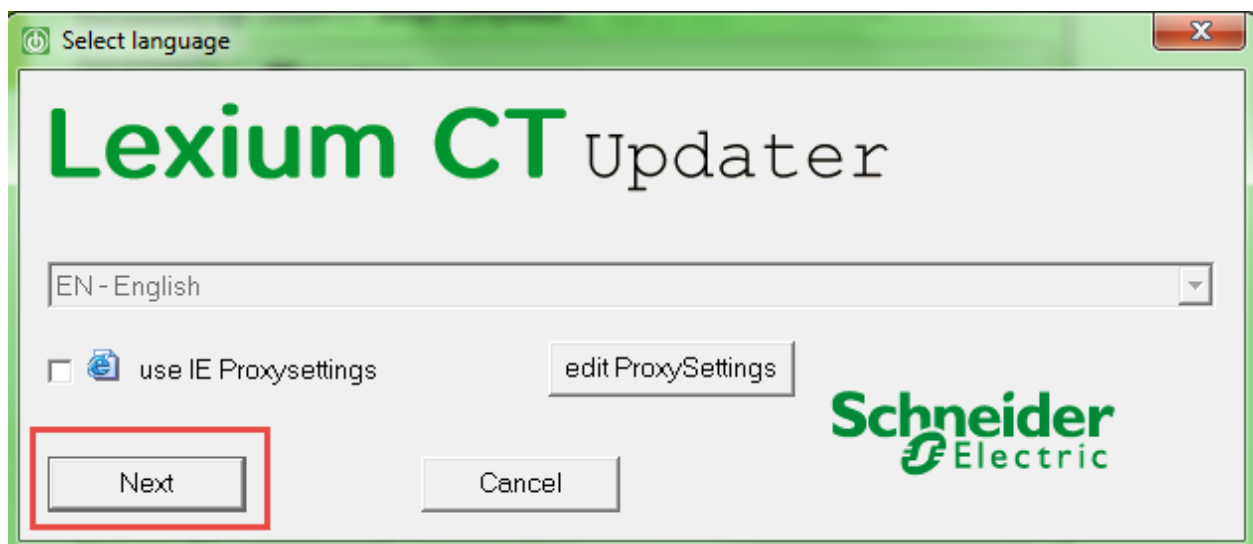
http://www.schneider-electric.com/download/ww/en/file/794188974-LexiumCTInstall.exe/?fileName=LexiumCTInstall.exe&reference=LexiumCTInstall_Set-up-Tool&docType=Software---Released

Step 2 – Run the LexiumCTInstall.exe installer file

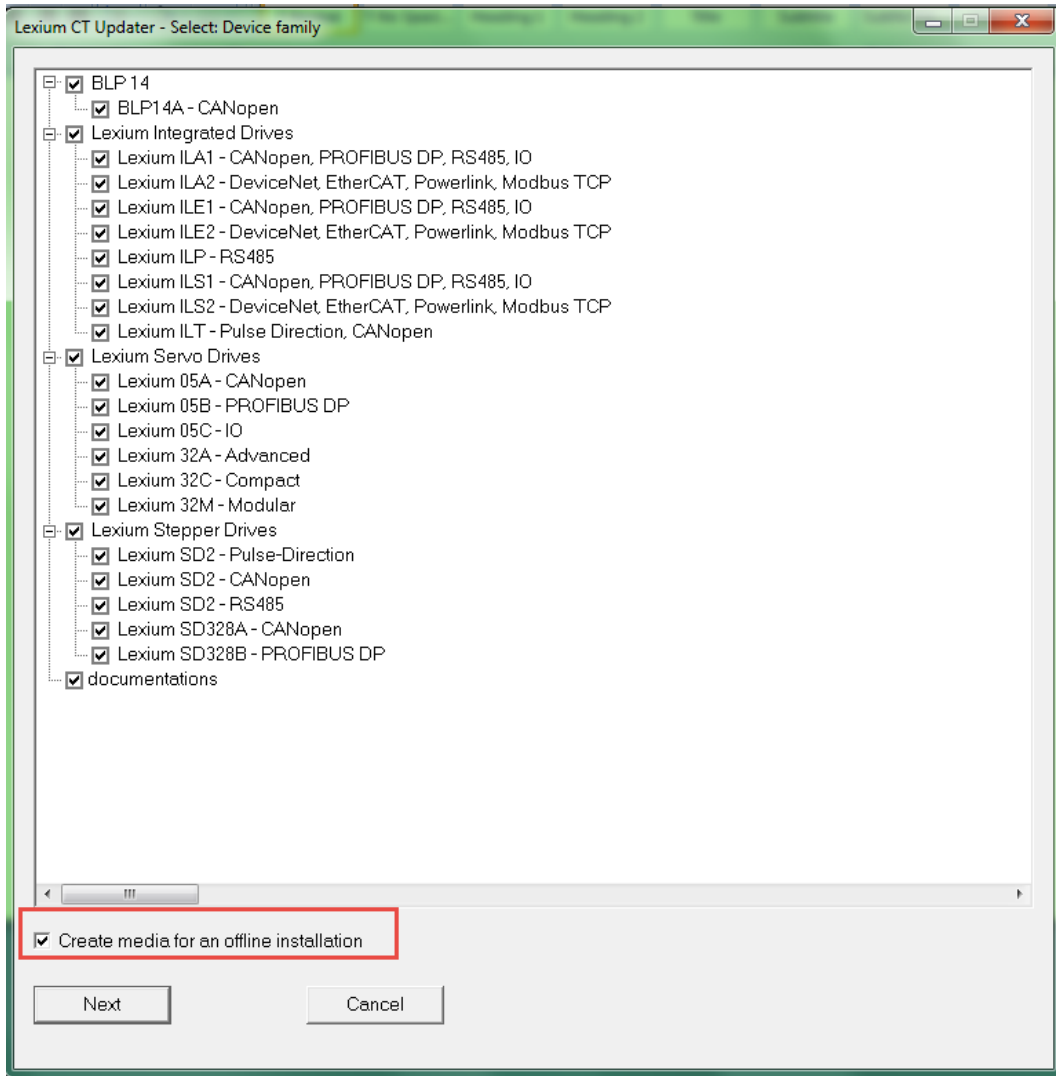
Step 3 – Press OK



Step 4- Press Next



Step 5 – Check the devices you want to install. You can select all of them. Make sure you check the “Create Media for an offline installation” checkbox.



Step 6 – Select the destination of the download files. It is recommended to download them in a folder.

Step 7 – The downloaded data will contain a LocalInstallation.exe and an InstallMedia folder. Now you can run your offline installation by running the LocalInstallation.exe

Name	Date modified	Type	Size
InstallMedia	11/24/2015 4:24 PM	File folder	
LocalInstallation.exe	3/5/2014 4:55 AM	Application	5,649 KB

This completes the step by step instructions on how to create an offline installation of Lexium CT.