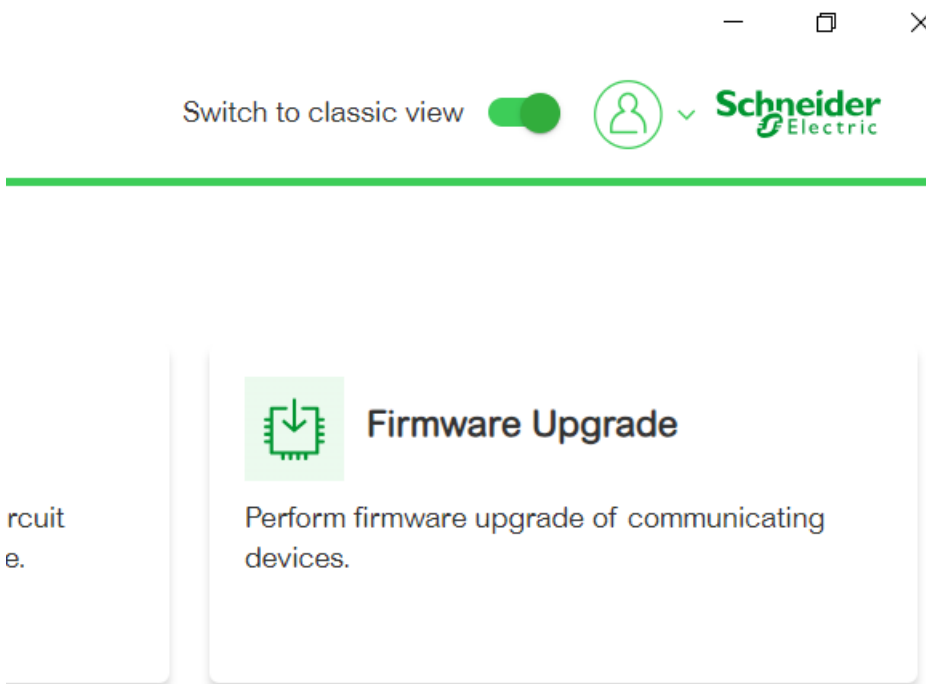
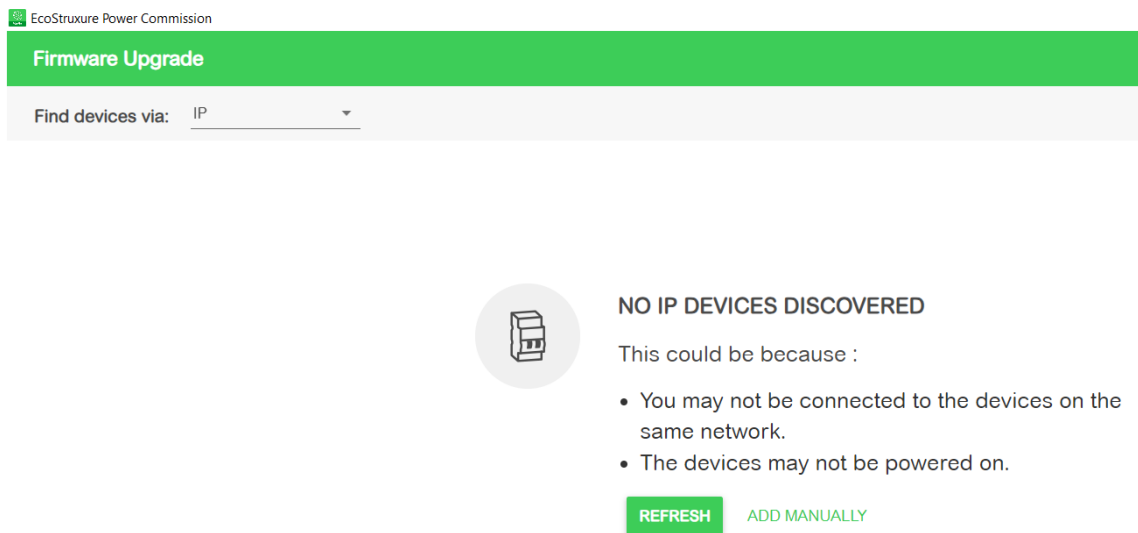


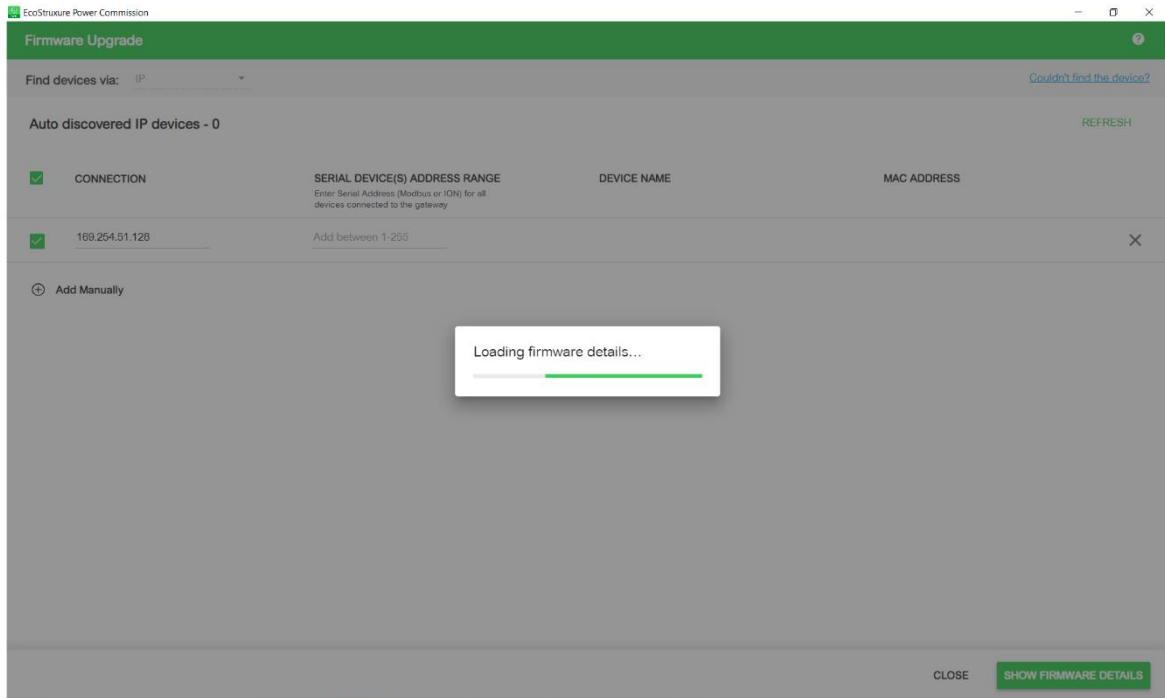
1. Open the Ecostruxure Power Commission software, click over Firmware Upgrade



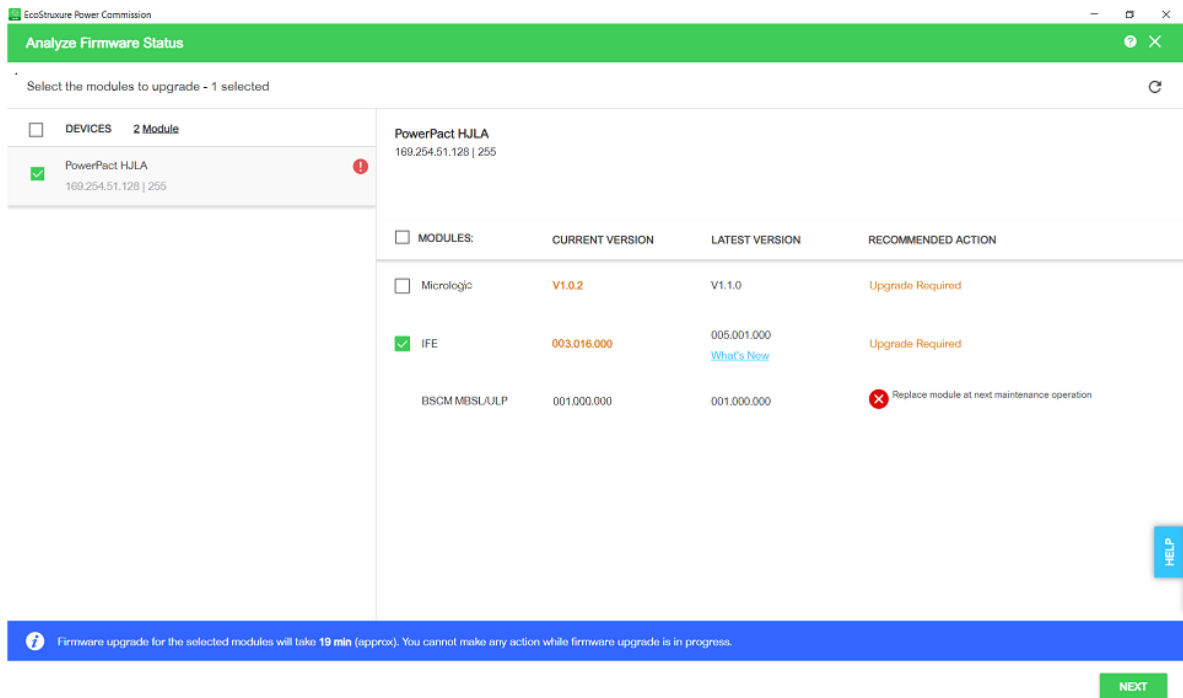
2. Click over Add manually



- Write the IP address, if you are using IFM modules write the serial address range, click over Show Firmware Details,



- Select the device and click over next,



5. Click over upgrade, the default password is 0000

The screenshot shows a web application window titled "EcoStructure Power Commission" with a sub-header "Analyze Firmware Status". Below the header, there is a navigation link "← Enter the password for the devices to upgrade". A table displays the status of a device:

NAME	MODULE	
IFE 169.254.61.128 255	IFE	Ready to Upgrade

At the bottom of the page, a blue banner contains a help icon and the text: "Firmware upgrade for the selected modules will take 19 min (approx). You cannot make any action while firmware upgrade is in progress." A green "UPGRADE" button is located in the bottom right corner. A vertical "HELP" button is also visible on the right side of the page.