

EcoStruxure Control Expert V16.0 - Release Notes

December 2023

Table of contents

EcoStruxure Control Expert V16.0 - Release Notes	1
<u>1. What's New in Control Expert V16.0.....</u>	<u>2</u>
1.1 New Features	2
1.2 Hot fix Integrated	7
1.3 List of Enhancement.....	7
1.4 List of Fixed Issues	8
1.5 Vulnerabilities fixed in V16.0	9
<u>2 Compatibility Rules</u>	<u>10</u>
2.1 Compatibility Table for Control Expert Application Versions & Controller firmware	10
2.2 LL984 Libraries	10
2.3 DTM Version Matrix.....	11
2.4 Incompatible Device DTMs	11
<u>3 Additional information.....</u>	<u>11</u>
3.1 FAQ.....	11
3.2 Limiting the length of the installation path.....	11
3.4 Configure Topology Manager in client/server with Security Editor	11
3.5 Reset of the Security Editor.....	12
3.6 READ_REMOTE, WRITE_REMOTE,SET_VAL have to be used in MAST task only	12
3.7 Security Database Migration	12
3.8 Installation freeze on Microsoft Windows 10 LTSC version < 21H2	13
3.9 Security Editor Audit functionality.....	13
3.10 Documentation files available on se.com.....	14
<u>4 Modicon PAC software suite.....</u>	<u>14</u>

1. What's New in Control Expert V16.0

1.1 New Features



Supported Windows Operating Systems

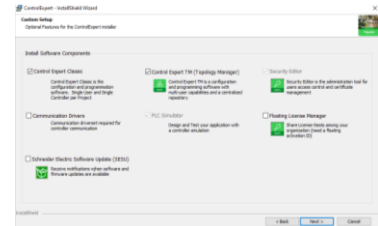
In addition to Windows 10 and Windows Server 2019, now Control Expert supports Windows 11 and Windows Server 2022



New software installer

Control Expert's wizard simplifies and improves installation:

- Customize your installation by adding only software components you need
- Simplified workflow and user-friendly installer
- Complete your software experience with Modicon PAC software suite
- Silent installation support software selection



M580 Processor 4.20 Firmware Platform integration

- NTP V4,
- SNMP V3,
- HTTPS protocols
- Bugs fixes

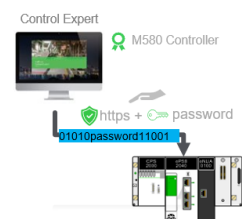


Secure Engineering Link

Security Communication – Protect your automation system against unauthorized access

User defined protection between Control Expert software and your M580 controller:

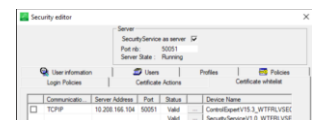
- Rely on HTTPS standard (TLS)
- User-defined password access protection for each controller
- Optional protection mechanism (Modbus TCP connection formerly TCP/IP supported)



Security Editor

Manage users and certificate

- Security Editor database is installed if you requested to configure users and certificates
- Security Administration password user-defined (no default password anymore)
- Centralized users with Microsoft Active Directory (or LDAP: Lightweight Directory Access Protocol, it is recommended to use Microsoft Active Directory as the LDAP server)
- Devices certificate whitelist



- Share configuration for users and device certificate with several engineering station
- Optional user password validity



M340 Processor 3.60 Firmware

Platform integration – Protect Engineering Link

- New option “Protected Engineering Link”: secure authentication for PLC reservation (v3.60 minimum)
- Set Application password to your controller

Note: This option is enabled by default. It may cause longer loading time between Control Expert and M340 controller due to the cyber security inspection mechanism to be established.



Support new 16 slots backplane

Platform integration

Modernize your Controller Quantum or extend your extend capabilities of M580 using new 16 slots backplane BMXXBP16000.

Increase IO points number by combining 16 slots backplane and DDI/DDO high density modules.



Support BMENOR2200.3

Platform integration – Telemetry protocol module

Communication module dedicated for telemetry protocols (IEC60870-5-101/104, DNP3). New features bringing by SV4.01.14 and DTM of this module are:

- New control ports on front panel
- Multiple session for DNP3 Server
- Read-only mode for IEC60870-5-104 Server
- Rest communication by Device DDT
- Event sync disable/enable

Note: This module will be visible with an HF in 2024.



Modicon Switch Diagnostics

Platform integration – Configuration & Diagnostic

Predefined configuration files for Modicon Switches V2.6 are available in Windows Menu > EcoStruxure Control Expert > Extras > Config DRS > MCSESM

To Monitor your network devices with consistent attributes names from your controller application when you are using EtherNet/IP Protocol



Faster online changes

Engineering productivity – Build changes

A series of performance enhancements have been made to improve your experience with online programming modifications when clicking on the "Build changes" button. No specific configuration is required to observe this optimization.

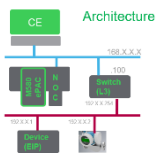
Depending on your application with M580, duration are optimized up to 60% compare with previous version of Control Expert.

New software icons

Easily identify running applications :



Application	Icon
Control Expert Classic	
Control Expert (Topology Manager)	
Security Editor	



EtherNet/IP devices can be used in routed networks

Architecture Evolution

Since CE V15.3, EtherNet/IP devices connected via BMENOC0301/311 can be used in routed networks.

Now with V16.0 we also extend this capability to our M580 Controller.

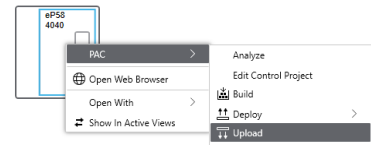


Control Expert
Topology Manager

Reconcile changes

Topology Manager - Upload

Reconcile Build changes done on site controller in a simple manner using right click menu of your controller and select PAC > Upload



EcoStruxure Control Engineering software suite integration

Topology Manager - Federate software



Control Expert
Topology Manager

- With Control Engineering Verification:
Launch a static analysis of your Control Expert application. Select a non-conformity by clicking on the location. You will be redirected to the corresponding line and code section into Control Expert project ("back to source")
- With Control Engineering Documentation:
Reverse engineering an application to visualize control and data flows in a simple, abstract way

The user will need to create or connect to their Control Engineering license to run the tools.



Update Application project with newer device DTM version

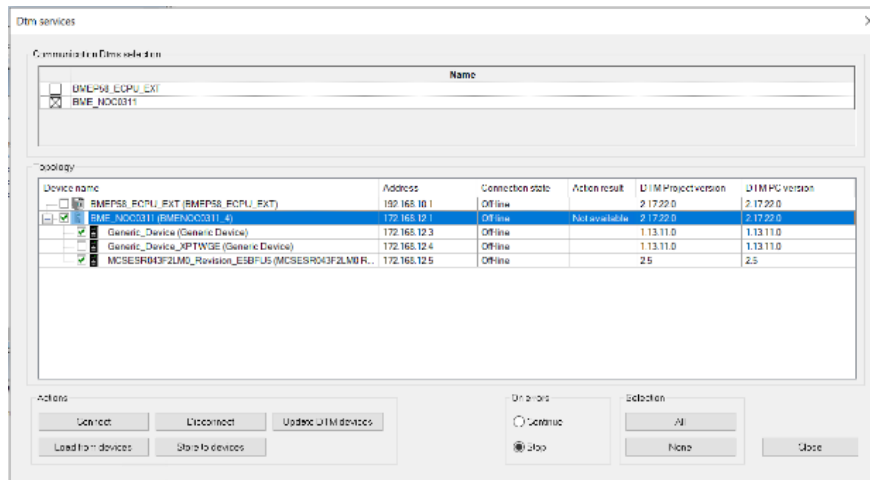
Device Management – Control Expert Classic & Topology Manager

User can compare device DTM version used in the opened Project with device DTM version present in the PC.

Update of one or several devices DTM is possible by doing the following actions :

- Select DTM Brower > Right Click on Host PC > DTM Service...

- Select Device to update using check box
- Click Update DTM devices button



The topology manager also offers this new feature:

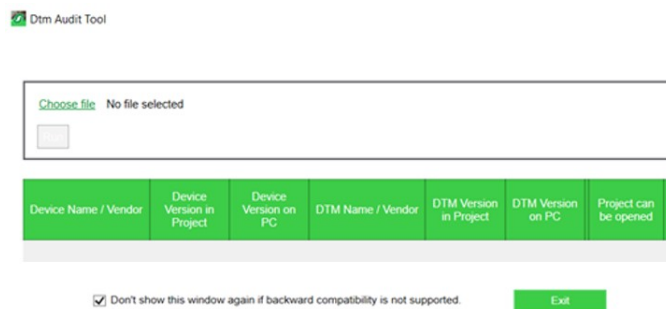
Device Name	DTM Project version	DTM PC version	Connection state	Action result
ATV340	2.1.2.0 (3.3.0.0)	ATV340	2.1.2.0 (3.3.0.0)	Not Started
ATV340	2.1.2.0	ATV340	2.1.2.0	Not Started
ATV340_YE192C	2.1.2.0	ATV340	2.1.2.0	Not Started
ATV340_CV4GN8	2.1.2.0	ATV340	2.1.2.0	Not Started
ATV320	1.2.3.0 (1.3.3.0)	ATV320	1.2.3.0 (1.3.3.0)	Not Started
ATV320	1.2.3.0	ATV320	1.2.3.0	Not Started

Note: only one version of a device's DTM can be installed on a computer. So, if you decide not to update your devices with the same version, when you open and register a device on a PC with a different version, the device will automatically be registered with that DTM version.

Dtm Audit Tool Option

Device Management – Control Expert Classic & Topology Manager

In case of backward compatibility is not supported, you have the possibility to hide this Dtm Audit Tool by checking the option “Don't show this window again if backward compatibility is not supported”



Centralized User Management

Overview of new feature from Security Editor

Teams with multiple engineers involved in authentication will need to use the Security Editor to administer access to Control Expert.

This software tool simplifies the configuration of Control Expert user access control and supports a centralized architecture with the following features:



- Client/server architecture supported via:
 - ✓ Secure proprietary protocol for users without IT authentication infrastructure
 - ✓ Lightweight Directory Access Protocol (LDAP): it is recommended to use Microsoft Active Directory as the LDAP server
- Manage certificate whitelist
- Generate certificate
- Centralized security database

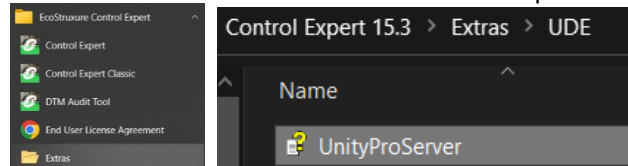
This feature is an initial step to provide user authentication at controller level in the next version of Control Expert and M580 firmware.

The Control Expert API

Openness & library

The application programming interface (API) is named Unity Developer Edition (UDE).

The UDE documentation enables you to automate the main engineering tasks. This documentation is installed in Control Expert's Extra folder:



Note: a .Net /C# reference application solution is planned in the next release of Control Expert.



Safety System Compliance

TÜV certification is scheduled for July 2024 for Control Expert V16.0 with the HotFix named ControlExpert_V160_HF001
M580 Safety CPU 4.2 will be supported and allowed

1.2 Hot fix Integrated

The following hotfixes are implemented in Control Expert V16.0

ControlExpert_V153_HF006	PEP1059568R	CE v15.1 - Random M580 crash EC10 on Build change - M580 H586040 v3.20	PLCCCE-4527
ControlExpert_V153_HF006	PEP1059880R	[CodeGen][regression] PLCs in Halt using "PC_FBD_IODDT_PREMIUM.XPG"	PLCCCE-4381
ControlExpert_V153_HF007	PEP1061300R	ECE 15.3 - Error 1722 when installing control expert	PLCCCE-4983
ControlExpert_V153_HF006	PEP1062241R	CE15.3-Build error on a CE14.1 application.	PLCCCE-4977
ControlExpert_V153_HF007	PEP1063451R	CE V15.3 - Installation issue - password length requirement too long	PLCCCE-5005
ControlExpert_V153_HF006_B	PEP1072940R	CE V15.3 HSBY Exchange list issue moving a WRITE_REMOTE EFB	PLCCCE-6538
ControlExpert_V153_HF006_B	PEP1072942R	CE V15.3 HSBY Exchange list issue removing a PU online	PLCCCE-6472
ControlExpert_V152_HF010	PEP1073702R	CE15.2-DFB Template Signature is same for all DFB's.	PLCCCE-6545
ControlExpert_V153_HF008	PEP1079704R	CYB - CE V15.3 - Application password backdoor key vulnerabilityPEP1079704R	PLCCCE-6893
ControlExpert_V152_HF010	PEP1079761R	CE V15.2 - Add new Project Settings to disable template signature	PLCCCE-6899
ControlExpert_V152_HF010	PEP1079762R	CE V15.2 - Import DFB selecting Replace All changes template signature	PLCCCE-6894
ControlExpert_V153_HF006_B	PEP1087441R	CE V15.3 HSBY Exchange list issue CCS Block mapped on %KW.	PLCCCE-7739
ControlExpert_V153_HF009	PEP1085626R	CYB - CEV15.3 - Strengthen SecurityAdmin and application password	PLCCCE-6337

1.3 List of Enhancement

The following enhancements are implemented in Control Expert V16.0

PEP0547920R	Naming limitations in Device_DDT	PLCDDTM-693
PEP0571765R	Enhanced Modbus DTM device for backward compatibility	PLCCCE-3702
PEP0641835R	Export of located address of variable of a DDT is not working	PLCCCE-3105
PEP0657773R	CEv15.0 - Ability to add more than one than request in DTM EIP Device	PLCDDTM-697
PEP1026276R	CE v15.1 - Improve duration of build changes : optimize online build	PLCCCE-2454
PEP1040450R	CE - proposal to enhance "DiagFile" procedure	PLCCCE-4978
PEP1044907R	CE Enhancement - LD Section - Column width	PLCCCE-3873
PEP1044987R	Support 5120 *1440 resolution	PLCCCE-4457
PEP1049199R	DTM browser sorting improvement	PLCCCE-4547
PEP1057663R	Slow Scroll in FBD Section	PLCCCE-4393
PEP1059883R	Exporting project uses default path	PLCCCE-4904
PEP1062762R	Splash screen when starting CE	PLCCCE-4979
PEP1062798R	Add EDS without admin rights	PLCDDTM-721
PEP1063180R	Simplify installation setup of Control Expert	PLCCCE-3362

1.4 List of Fixed Issues

The following known issues are fixed in Control Expert V16.0

PEP0499448R	UP13.1 bug in FB S_MUTING_PAR	PLCCE-8
PEP0605174R	CEX 14.1 - Virtual connection not available for safety controller	PLCCE-1790
PEP0619623R	CE14.1 safety DFB S_EQUIVALENT fails on dead lock	PLCCE-151
PEP0664455R	CE V15.0 - the status word of S_EDM doesn't switch properly	PLCCE-3252
PEP0678504R	CE V15 SP1 - Implicit conversion issue	PLCCE-1791
PEP0678719R	ECEV15SP1 (and all versions) - Grafset section&actions limited to 100	PLCCE-1792
PEP1007961R	CE 14.1/15 SP1 140CRP31200 Device services	PLCCE-4028
PEP1010001R	M580 CPUChange V1V2 issue	PLCDTM-523
PEP1010382R	ECE V15 & SP1 - SUB_DT_DT bad result	PLCCE-6475
PEP1023957R	CE151-TM TesysT custom manual requests not possible	PLCCE-2976
PEP1030248R	VMT-7208 CYB - path traversal vulnerability in SE.SODB.Host.exe	PLCCE-4322
PEP1032466R	CE15.1-mismatch DDT type on PMESWT100	PLCDTM-522
PEP1034947R	CE15.1-'IP configuration from flash' feature not working	PLCCE-7418
PEP1035214R	CYB - ControlExpert authentication bypass with UMAS 0x38 - Diffie Hellman	PLCCE-2978
PEP1036989R	CEV15.2 - Silent installation with /qn not working	PLCCE-3393
PEP1038666R	CE V15.2 - Error password for FW - wrong page on double click	PLCCE-4029
PEP1045069R	CEV15.2, DIO_CTRL and DIO_Health in CPU DDDT not working properly	PLCDTM-492
PEP1049667R	CEv15.2 Adding multiple serial device requests not working with TM	PLCCE-3704
PEP1049941R	CE15.1-third party DTM returns runtime error after changing IO count	PLCDTM-419
PEP1049987R	CE V15.2 When online with Quantum CPU after importing DFB	PLCCE-3874
PEP1050271R	CE 15.2 exporting zef causes issues with 15.0 sp1 and earlier	PLCCE-3980
PEP1050804R	ECE 14.1 - bug when enabling/disabling Data Dictionary online	PLCCE-3979
PEP1051539R	CE V15.2 - ZEF import issue from application UPV11	PLCCE-4074
PEP1051988R	ECE 15.2 S_RD_ETH_MX2 has a higher execution time than S_RD_ETH_MX	PLCCE-4160
PEP1052041R	CEV15.2 - Import issue with aliases and DDT links with modules	PLCCE-5368
PEP1052206R	CEV15.3 - Search tool does not find located variables as array	PLCCE-4549
PEP1052335R	CE15.2-Changing the CPU version changes the remote I/O state address.	PLCCE-4550
PEP1052719R	ECE v15.2 - Gets slow when PC is disconnected from company Domain	PLCCE-6914
PEP1057360R	ECE15.3 - Crash when we use topological addressing inside a PU	PLCCE-5851
PEP1057861R	ECE 15.2 - Crash after modify an object DDT type	PLCCE-4460
PEP1059105R	CEV15.3 -Installation issue when PC name above 16 characters	PLCCE-4505
PEP1059568R	CE v15.1 - Random M580 crash EC10 on Build change - M580 H586040 v3.20	PLCCE-4527
PEP1059864R	V15.3 - Cannot change values on Analog Mixed modules	PLCCE-4506
PEP1059880R	[CodeGen][regression] PLCs in Halt using "PC_FBD_IODDT_PREMIUM.XPG"	PLCCE-4381
PEP1060720R	DFB - S_OUTCONTROL can go into deadlock state	PLCCE-4920

PEP1061300R	V15.3 - Error 1722 when installing control expert	PLCCE-4983
PEP1062240R	V15.3 - Fails to set %SW139 and %SW141initial value	PLCCE-6080
PEP1062241R	V15.3-Build error on a CE14.1 application.	PLCCE-4977
PEP1062764R	V15.x - Install CE V15.0 on Win7 impossible (ok) but bad message	PLCCE-4980
PEP1063218R	v15.3 - Type library update - install existing lib v15.2 => Crash	PLCCE-5073
PEP1063451R	V15.3 - Installation issue - password length requirement too long	PLCCE-5005
PEP1064800R	V15.3 SecurityAdmin expiration date prevents Control Expert from starting up	PLCCE-6182
PEP1065001R	ECEV15.3 - M580S - Autorun bit switch to false abnormally	PLCCE-5369
PEP1066581R	CEV15.3 - Import into CE of a Momentum project in .asx format fails	PLCCE-6422
PEP1067162R	Control Expert 15.3 time zone shifts when opening a CE14.1 .sta file	PLCCE-6423
PEP1067825R	CEV15.3 - Password issue with safety applications	PLCCE-5849
PEP1069923R	ECE V15.3 - Alias to DDT variable are not exported in XVM file	PLCCE-6081
PEP1070380R	V15.3 DTM Services Resize Issue	PLCCE-6183
PEP1070381R	V15.3 -DTM Services Error when update the DTM	PLCCE-6309
PEP1070842R	V15.3-PWS_DIAG not work after change class C IP address to class A	PLCCE-6308
PEP1072041R	V15.3 - CE14.1-Inspect window in DFB shows #Err!# Var does not exis	PLCCE-6424
PEP1072261R	V15.3-Cannot convert the attached Concept application.	PLCCE-6364
PEP1072940R	V15.3 HSBY Exchange list issue moving a WRITE_REMOTE EFB	PLCCE-6538
PEP1072942R	V15.3 HSBY Exchange list issue removing a PU online	PLCCE-6472
PEP1073340R	V15.3 - Logic ladder bad evaluated	PLCCE-6600
PEP1073702R	V15.2-DFB Template Signature is same for all DFB's.	PLCCE-6545
PEP1074100R	V15.3-Set daylight saving time not possible	PLCCE-6601
PEP1079704R	V15.3 - Application password weakness	PLCCE-6893
PEP1079761R	V15.2 - Add new Project Settings to disable template signature	PLCCE-6899
PEP1079762R	V15.2 - Import DFB selecting Replace All changes template signature	PLCCE-6894

1.5 Vulnerabilities fixed in V16.0

The following vulnerabilities are fixed in Control Expert V16.0

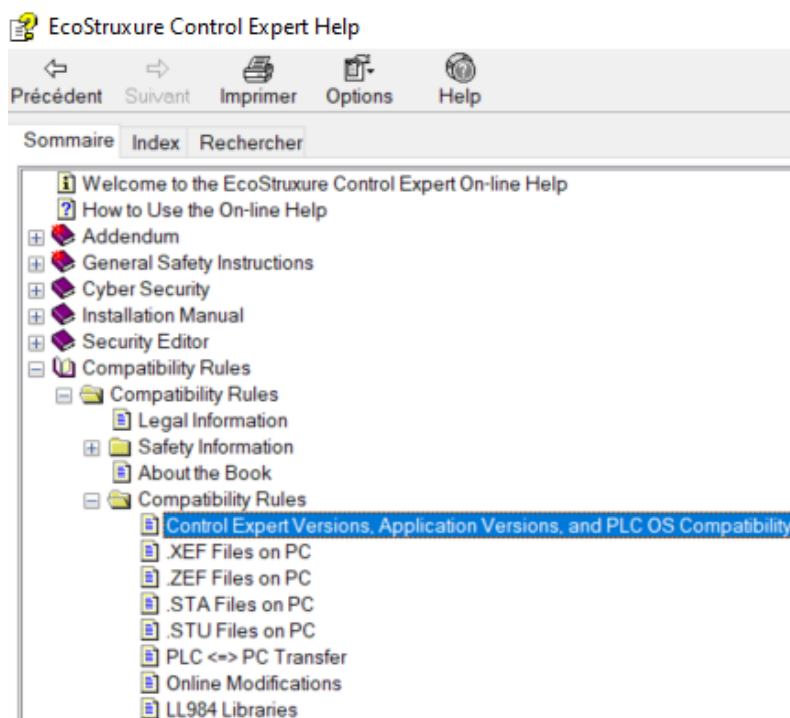
Software Version	Publication Date	Internal Reference	Description
EcoStruxure Control Expert V16.0	12/2023	PEP1030994R	CVE-2023-1548
		PEP0617820R	CVE-2023-27975
		PEP1030248R	CVE-2023-27976
		PEP1035214R	CVE-2023-6408
		PEP1060634R	CVE-2023-0286, CVE-2022-4304, CVE-2023-0215, CVE-2022-4450, CVE-2022-4203, CVE-2023-0216, CVE-2023-0217, CVE-2023-0401
		PEP1079704R	CVE-2023-6409

2 Compatibility Rules

2.1 Compatibility Table for Control Expert Application Versions & Controller firmware

Please find the compatibility table in the online help of the Control Expert for:

- Firmware version of controller
- XEF and ZEF Files on PC
- STA Files on PC
- STU Files on PC
- Controller <=> PC Transfer
- Online Modification



Note: Before upgrading your software, please make sure that you have saved your projects in .STA and ZEF or XEF formats. It is also recommend that you copy these to a suitable backup location.

2.2 LL984 Libraries

See Control Expert Version, Application Version and Controller Compatibility

2.3 DTM Version Matrix

DTM name	Control Expert Version									
	14.0	14.0 Hotfix	14.1	14.1 Hotfix	15.0	15.0 SP1	15.1	15.2	15.3	16.0
BME NOC 03x1.x	2.12.20	2.12.23	2.13.36	2.13.37	2.14.23	2.14.48	2.15.72	2.16.29	2.17.24	2.19.69
BME H58 x040	2.12.20	2.12.23	2.13.36	2.13.37	2.14.23	2.14.48	2.15.72	2.16.29	2.17.24	2.19.69
BME P58 x0x0	2.12.20	2.12.23	2.13.36	2.13.37	2.14.23	2.14.48	2.15.72	2.16.29	2.17.24	2.19.69
BME H58 x040S	2.12.20	2.12.23	2.13.36	2.13.37	2.14.23	2.14.48	2.15.72	2.16.29	2.17.24	2.19.69
BME P58 x040S	2.12.20	2.12.23	2.13.36	2.13.37	2.14.23	2.14.48	2.15.72	2.16.29	2.17.24	2.19.69
NOC 78x00	2.12.7	2.12.7	2.13.32	2.13.32	2.14.11	2.14.26	2.15.24	2.16.12	2.17.11	2.19.13
NOC 78x00.2	2.12.7	2.12.7	2.13.32	2.13.32	2.14.11	2.14.26	2.15.24	2.16.12	2.17.11	2.19.13
M_NOG 0402	3.12.7	3.12.7	3.13.34	3.13.34	3.14.11	3.14.28	3.15.26	3.16.12	3.17.11	3.19.15
Advanced_Generic_EDS	1.8.5	1.8.5	1.9.32	1.9.32	1.10.11	1.10.24	1.11.23	1.12.12	1.13.11	1.15.13
Generic_Device	1.8.5	1.8.5	1.9.32	1.9.32	1.10.11	1.10.24	1.11.23	1.12.12	1.13.11	1.15.13
Modbus_Device	1.2.5	1.2.5	1.2.5	1.2.5	1.2.5	1.2.14	1.3.2	1.4.0	1.5.0	1.7.2
BME CXM 0100	1.00.0003	1.00.0003	1.00.0003	1.00.0003	1.00.0003	1.00.0004	1.00.0007	1.00.0008	1.00.0008	1.00.0008
PME Generic DTM	1.0.32	1.0.32	1.0.32	1.0.32	1.0.32	1.0.32	1.0.37	1.0.37	1.0.37	1.0.38
BME AHI 0812	1.1.7	1.1.23	1.1.7	1.1.7	1.1.9	1.1.12	1.1.20	1.1.20	1.1.20	1.1.22
BME AHO 0412	1.1.7	1.1.23	1.1.7	1.1.7	1.1.9	1.1.12	1.1.20	1.1.20	1.1.20	1.1.22
BME NOR 2200	NA	NA	NA	1.0.061	1.0.087	2.1.20353.1	3.0.22049.1	3.0.22055.1	3.0.22308.1	4.0.23282.1
ModbusPlaceHolder	NA	NA	NA	NA	1.0.9	1.0.18	1.0.22	1.0.22	1.0.22	1.0.22
EIPPlaceHolder	NA	NA	NA	NA	1.0.9	1.0.18	1.0.22	1.0.22	1.0.22	1.0.22

2.4 Incompatible Device DTMs

Customers using KROHNE DTM will find their Control Expert stuck when they try to open the corresponding DTM equipment.

3 Additional information

This chapter describes new behaviors or recent limitations that are not yet documented in the Control Expert user manual.

Most of the following behaviors will be solved in the next versions.

3.1 FAQ

Additional information may be available on Schneider-electric.com ([Support / FAQ](#) [Frequently Asked Questions](#))

3.2 Limiting the length of the installation path

Installation path with more than 110 characters can leads to errors during installation or launching control expert.

(PLCCE-8107)

3.4 Configure Topology Manager in client/server with Security Editor

To connect Control Expert to a remote server PC, in the Security Editor of the client PC the certificate of the remote server PC must be whitelisted as described below:

Step	Action
1	Perform <i>one</i> of these actions when the corresponding radial button is active: <ul style="list-style-type: none"> • Enter the IP address of the server IP port in the Port field. • Enter the name of the host server in the Name field.
2	Click the Verify Certificate button to query the certificate. This sends a fetch request from the server and adds the retrieved certificate to the whitelist upon the confirmation by the <i>SecurityAdmin</i> .
3	Save and close the Security Editor and launch the Control Expert software.

When Control Expert connects to a remote server, the security database used is the one of the server.

It is why, in Security Editor on the Login Policies tab, the *Authentication Mode* and the *Centralized Protocol* are ignored except for LDAP.

3.5 Reset of the Security Editor

If you lose your *SecurityAdmin* password, you must uninstall/install Control Expert. Relaunch the Security Editor to configure your security settings.

Schneider Electric technical support also gives the possibility to reset the Security Editor without doing uninstall/install.
(PLCCE-7876)

3.6 READ_REMOTE, WRITE_REMOTE, SET_VAL have to be used in MAST task only

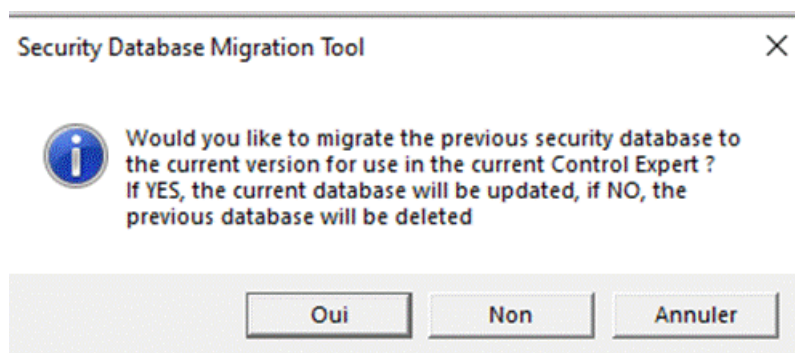
READ_REMOTE, WRITE_REMOTE (and also SET_VAL which is using same Data Dictionary system entry point) have to be used in MAST task only :

"If READ_REMOTE and WRITE_REMOTE EFBs are used in a section of the MAST task these EFBs must not be used in a section of another task (FAST, AUX, etc.)."

To solve this problem, the M580 and M340 firmware must be modified.
(PLCCE-3932)

3.7 Security Database Migration

If you already have Security Editor database configured from Control Expert previous version, after starting the Security Editor the following message is displayed:



Click "Yes" button to launch the migration of your existing Security Editor database

3.8 Installation freeze on Microsoft Windows 10 LTSC version < 21H2

During installation you may observe freeze when you try to install Control Expert on Windows 10 LTSC version < 21H2 operating system.
(PLCCE-7904)

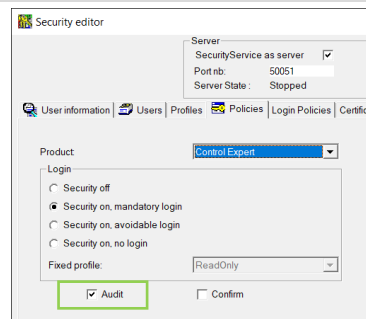
The following operating systems are supported:

- Microsoft Windows 10, 64-bit version 21H2 or later
- Microsoft Windows 10 Enterprise LTSC, 64-bit version 21H2 or later
- Microsoft Windows Server 2022
- Microsoft Windows Server 2019
- Microsoft Windows 11, 64-bit version 21H2 or later

3.9 Security Editor Audit functionality

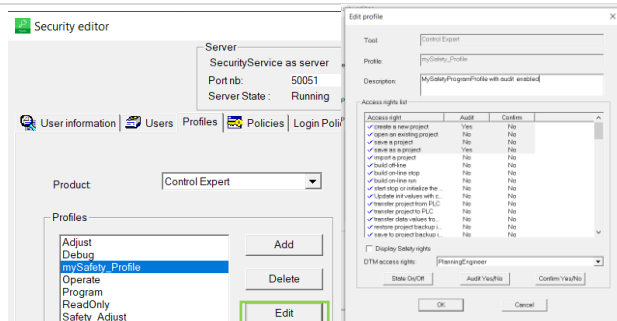
Please follow the steps below to activate trace , be added and explained within the next release of Control Expert.

Open the Security Editor, click on the Policies tab and check the "Audit" box to send event into Syslog messages and Microsoft event viewer (Application > Source = TraceServer).

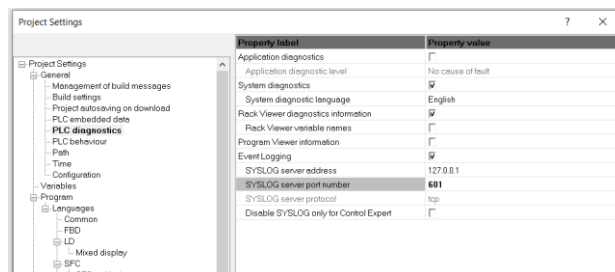


Adjust the actions you would like to record:

- Selection action using Edit Profiles button
- Select each action
- Click audit Yes/No button



Configure the Event Logging
In Project Settings > PLC diagnostics



Activate Audit and configure Event logging in control expert
Server is common for ECE and Controller.

3.10 Documentation files available on se.com

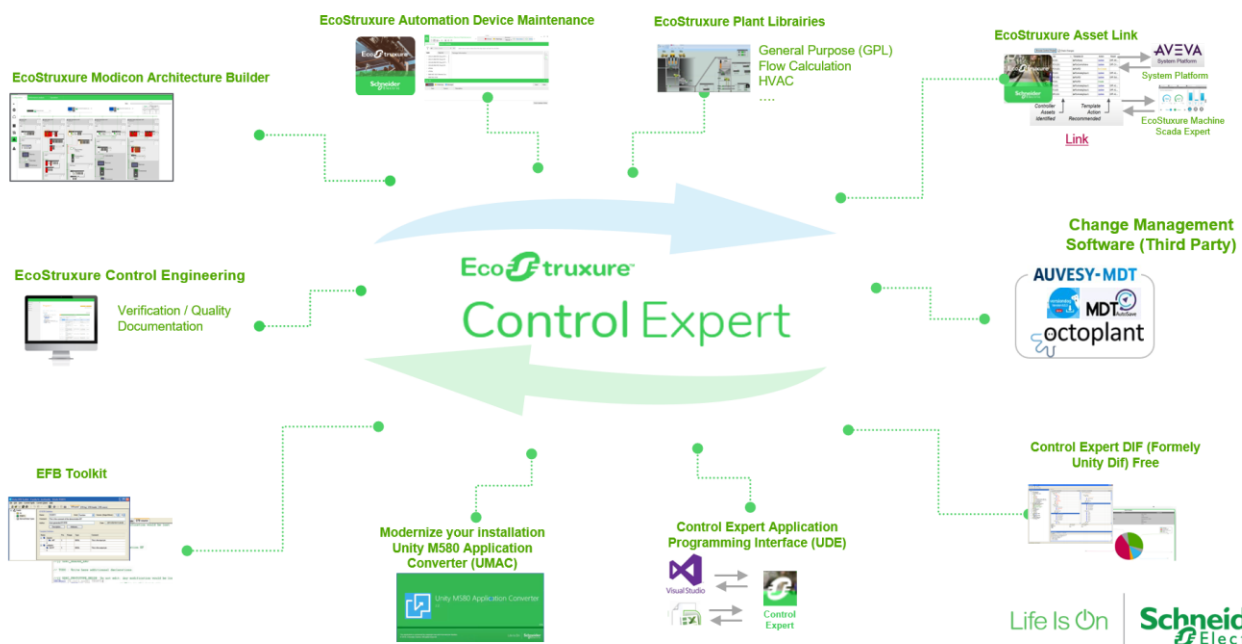
The following technical documentation update are available on se.com. Latest version is not yet included in the HTML help of the software.

Document Title	Link on se.com
EcoStruxure™ Control Expert Installation Guide	https://www.se.com/ww/en/download/document/35014793K01000/
EcoStruxure™ Control Expert Topology Manager	https://www.se.com/ww/en/download/document/EIO0000002756/
EcoStruxure™ Control Expert Security Editor	https://www.se.com/ww/en/download/document/EIO0000004105/
EcoStruxure™ Control Expert Operating Modes	https://www.se.com/ww/en/download/document/33003101K01000/
Controlling Application Execution on Computers Cybersecurity Application Note	https://www.se.com/ww/en/download/document/EIO0000004778/

4 Modicon PAC software suite

Extend Control Expert capabilities by installing additional software to help you during all the complete lifecycle

Modicon PAC Software Suite



Useful links :

GPL V1 : https://www.se.com/ww/en/download/document/GPL_Unity/

GPL V2 : <https://www.se.com/ww/en/download/document/GPLECE2022/>

CE DIF : https://www.se.com/ww/en/download/document/ControlExpert_DIF_V152/

Asset link : <https://www.se.com/ww/en/download/document/ECALV4.0/>

EADM: <https://www.se.com/ww/en/download/document/EADM/>