

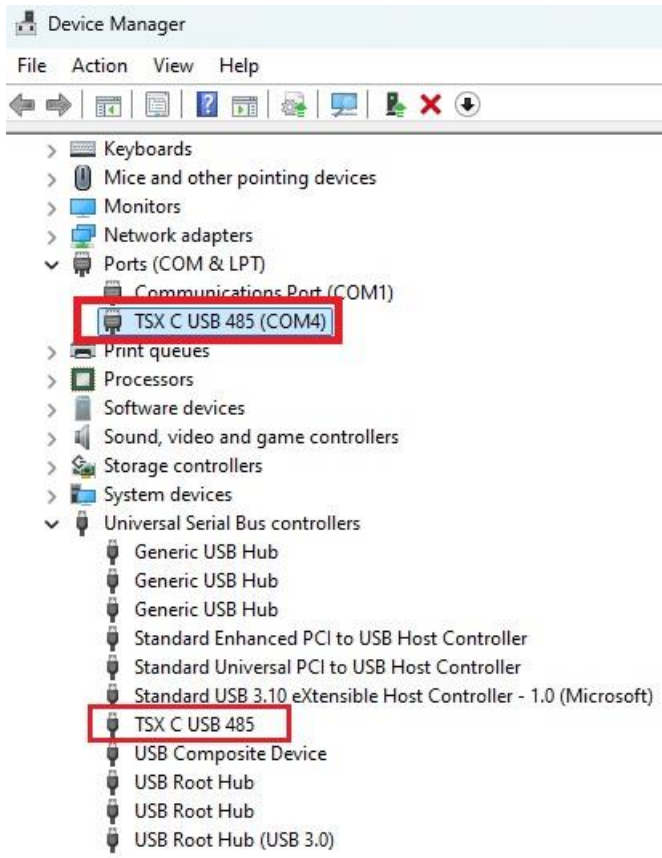
12-2024

SoMove - How to test Modbus Driver?

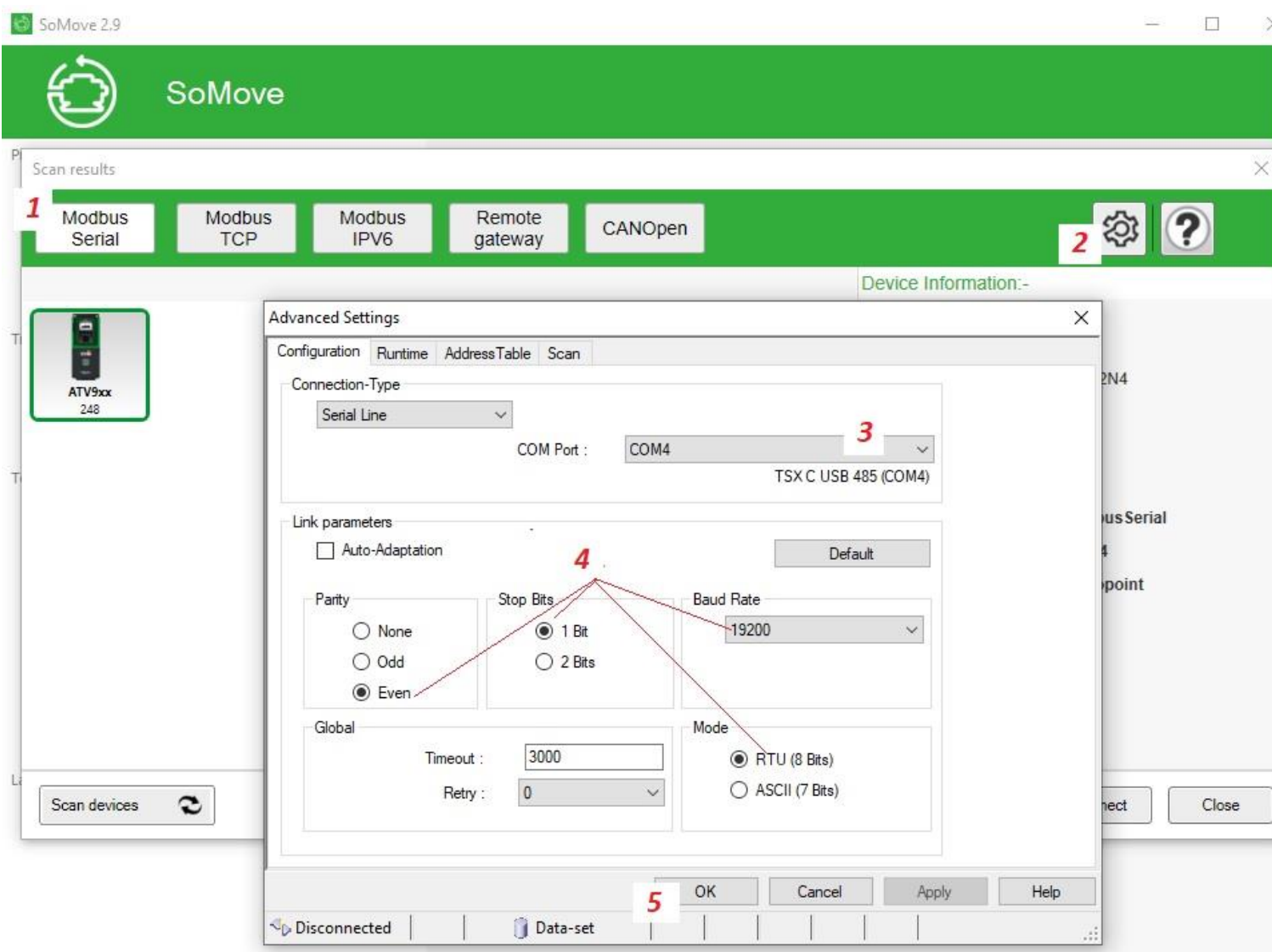
SOLUTION:

- 1) Plug in the USB programming cable TSCMCNAM3M002P

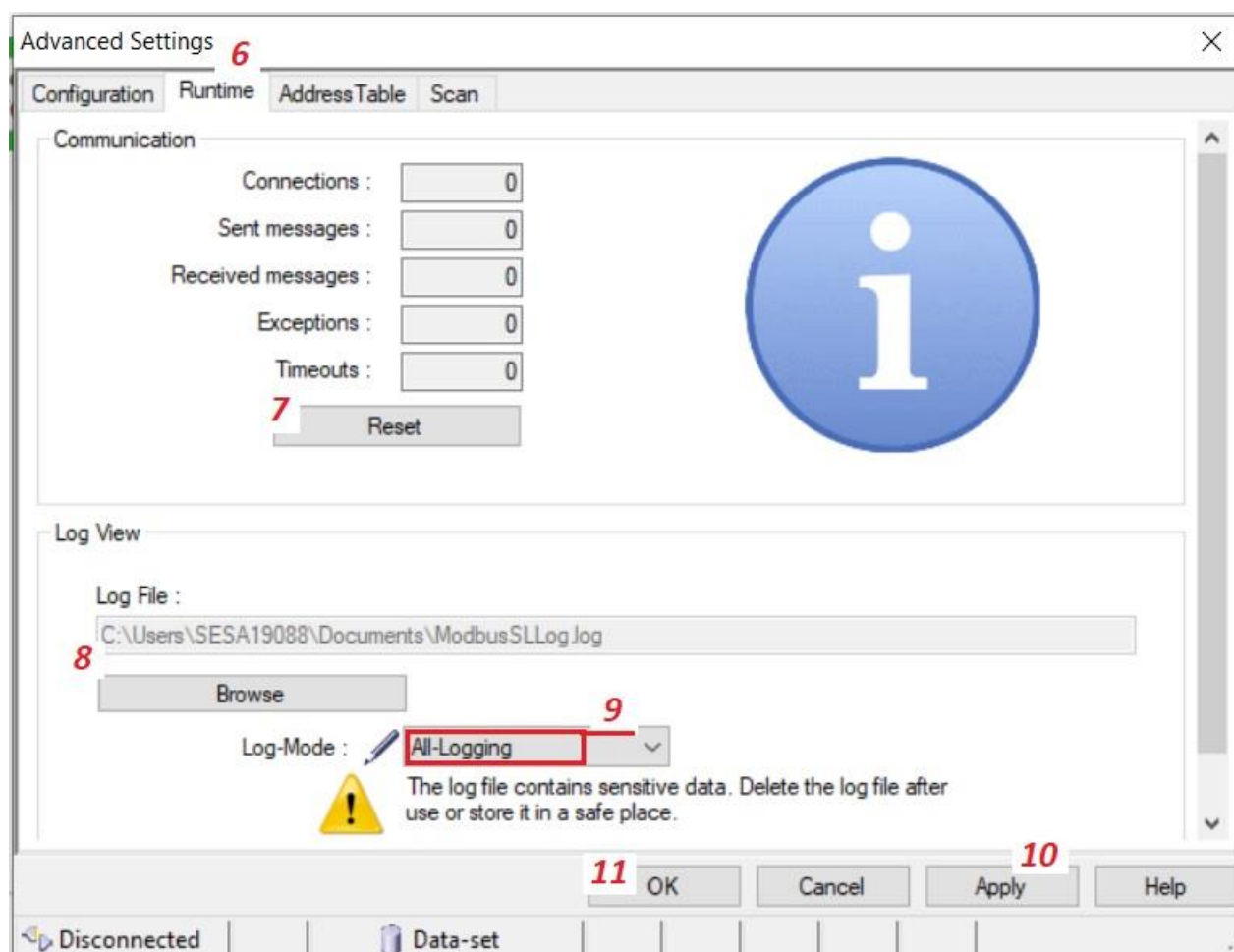
Using **Device Manager** check your virtual **COM port number** assigned to the USB cable:



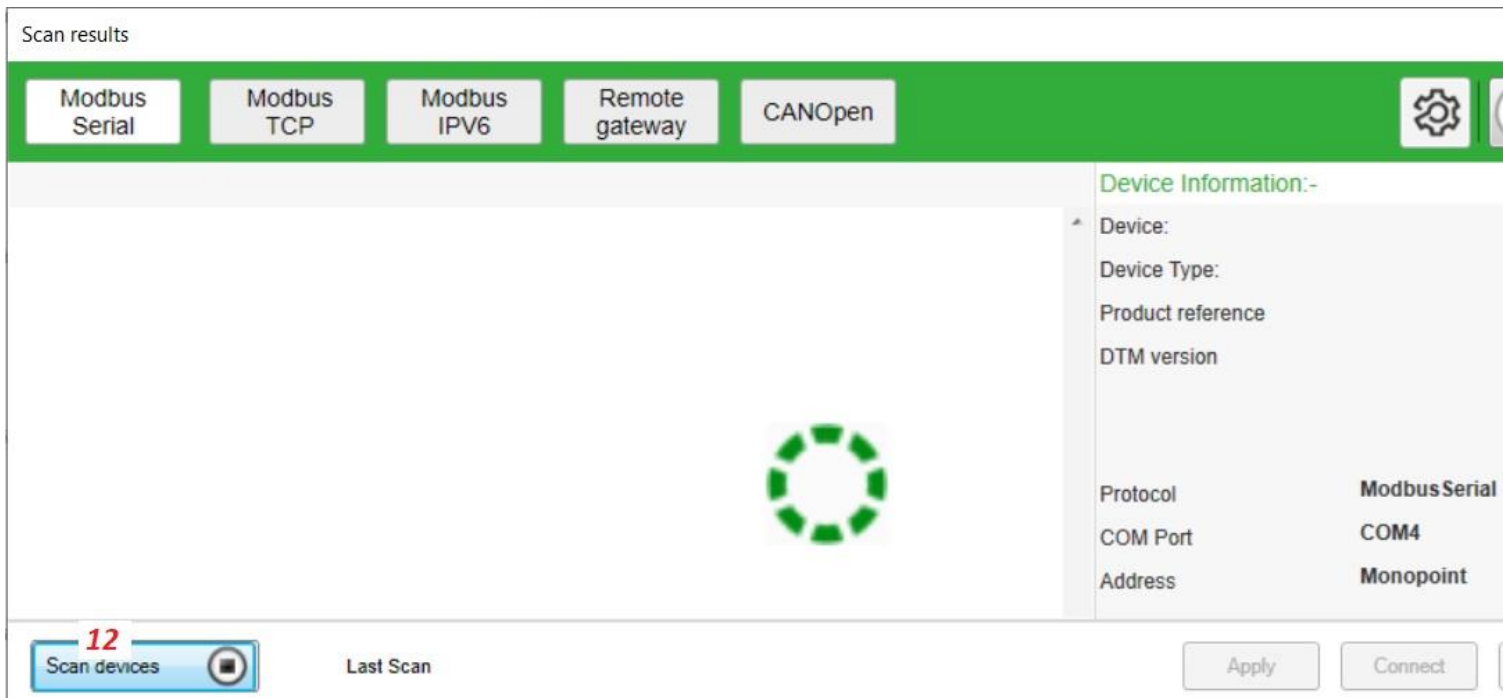
- 2) Launch SoMove
-> **Edit Connection / Scan**
-> Select **Modbus Serial** and arrange the **Advanced Settings / Configuration** as follows:



- 3) Set the **Advanced Settings / Runtime** for logging the communication



4) Press Scan Devices

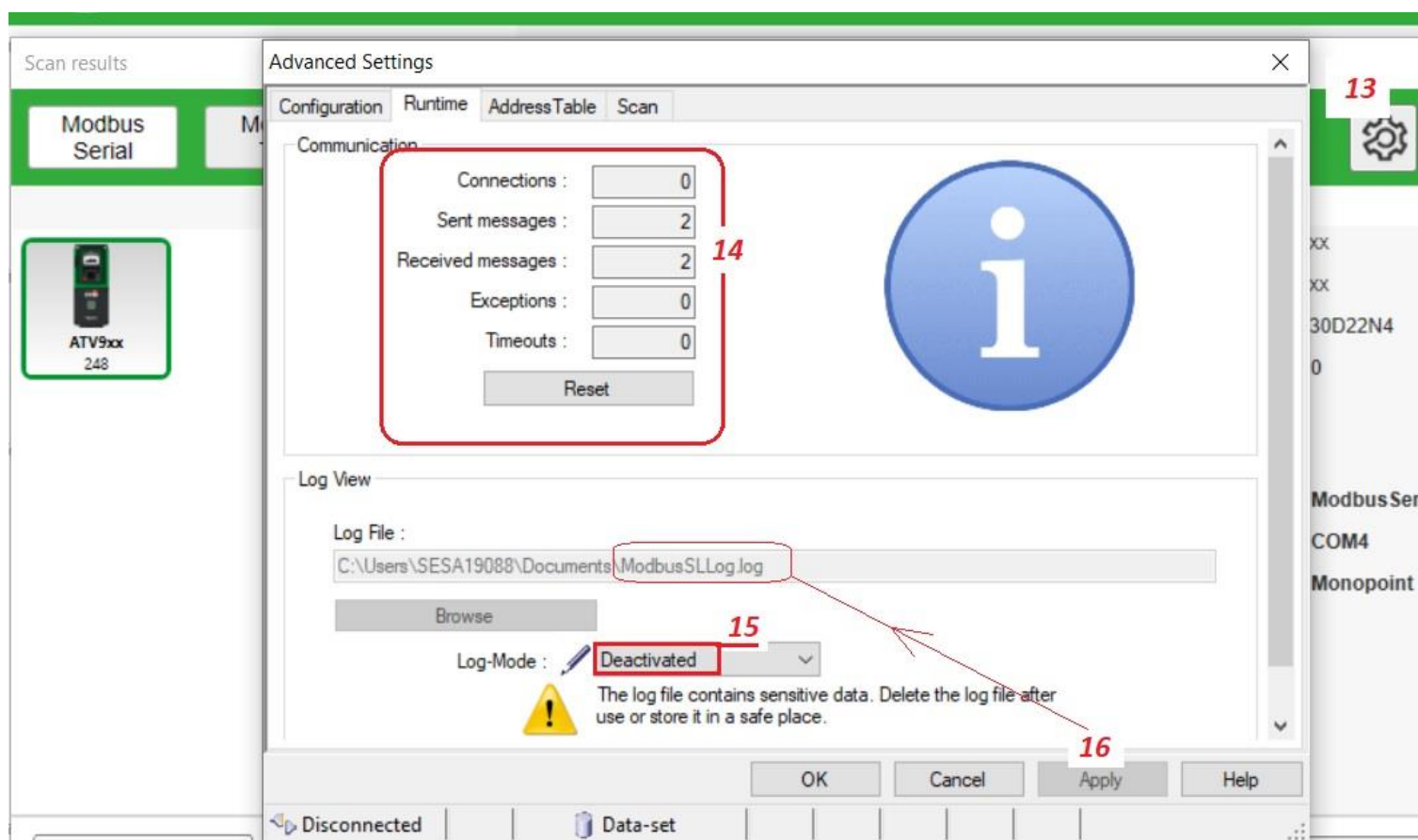


5) Come back to **Advanced Settings / Runtime**

- make the **screenshot** of the Communication test results – **14**

- stop logging

- note the location of the **ModbusSLog.log** file



6) Collect the **ModbusSLog.log** and send to us together with the **screenshot** of the Communication test results – **14**.

