

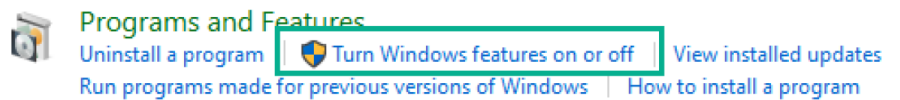
Subject: Machine SCADA Expert v2023 requirements for mobile access

Steps:

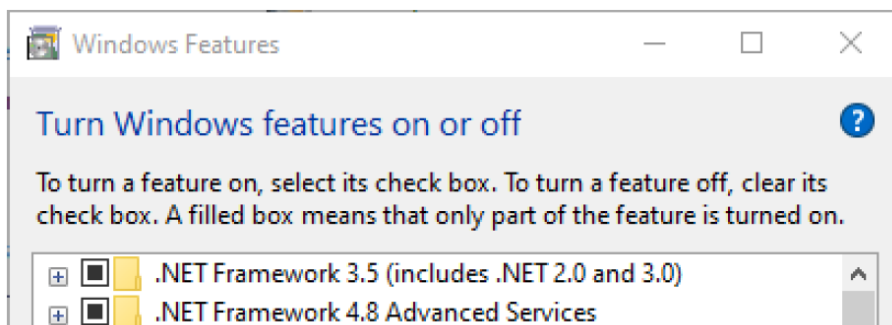
Installing .NET Framework

You must have both .NET Framework 3.5 and .NET Framework 4.8 (or later) installed in order to use all features of EcoStruxure Machine SCADA Expert v2023.

1. Open **Windows Control Panel**.
2. Click **Programs**.
3. Click **Turn Windows features on or off**.



4. Check the **.NET Framework** to install (if not already checked)



5. Windows will install the components.

From: Machine SCADA Expert manual Pg.38

.NET Framework

This software requires .NET Framework 4.8 (or later) installed and enabled.

If Windows is fully updated on your computer, the latest versions of .NET Framework should be installed, but they might not be enabled. Use either the *Windows Features* control panel in Windows or the *Server Manager* console in Windows Server to confirm that .NET Framework 4.8 is enabled.

In some cases, it might not be possible to update Windows through normal means. For example, if your computer is on a private network without access to the Internet, it might not be able to contact the Windows Update service. You can use another computer to download an offline installer for .NET Framework and then transfer it.

- Check topic "Install the Thin Client software" Pg.42 from the EMSE manual to see available Windows version.

Latest Revision: 01/17/2025

Version: 3

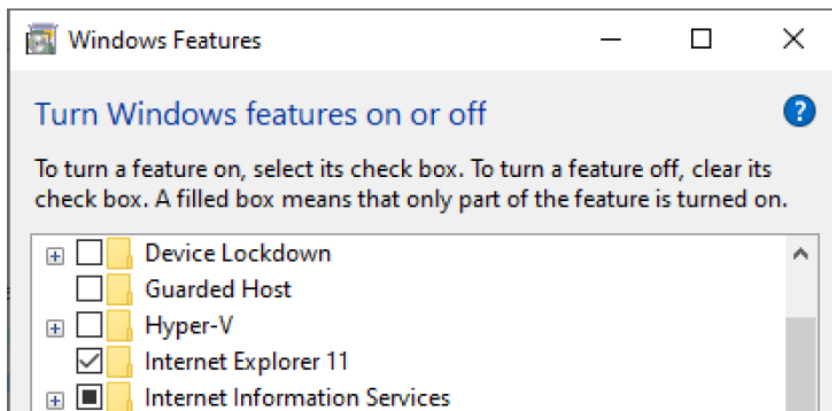
Industrial Graphics/Mobile Access

The Industrial Graphics editor has been integrated into the software and is an option for screen design. If you want to use the Industrial Graphics editor in your application, a web server must be installed and configured. The below steps are to install the Microsoft Internet Information Services (IIS) components.

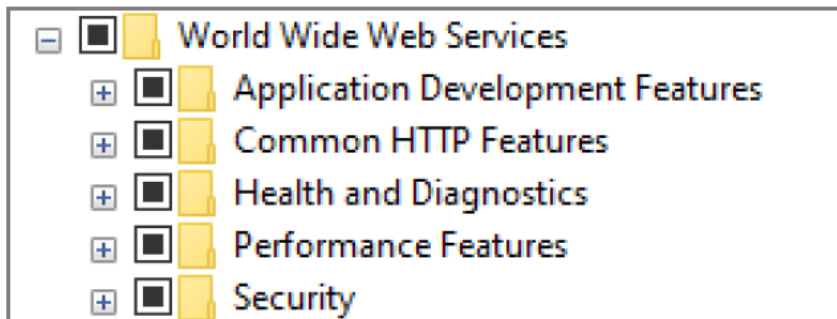
The below steps are for basic installation of IIS. Additional components and configurations may be required for your application.

6. (Continuing from step 5) While in **the Turn Windows features on or off** dialog, scroll down to **Internet Information Services**

7. Click the ± to expand.

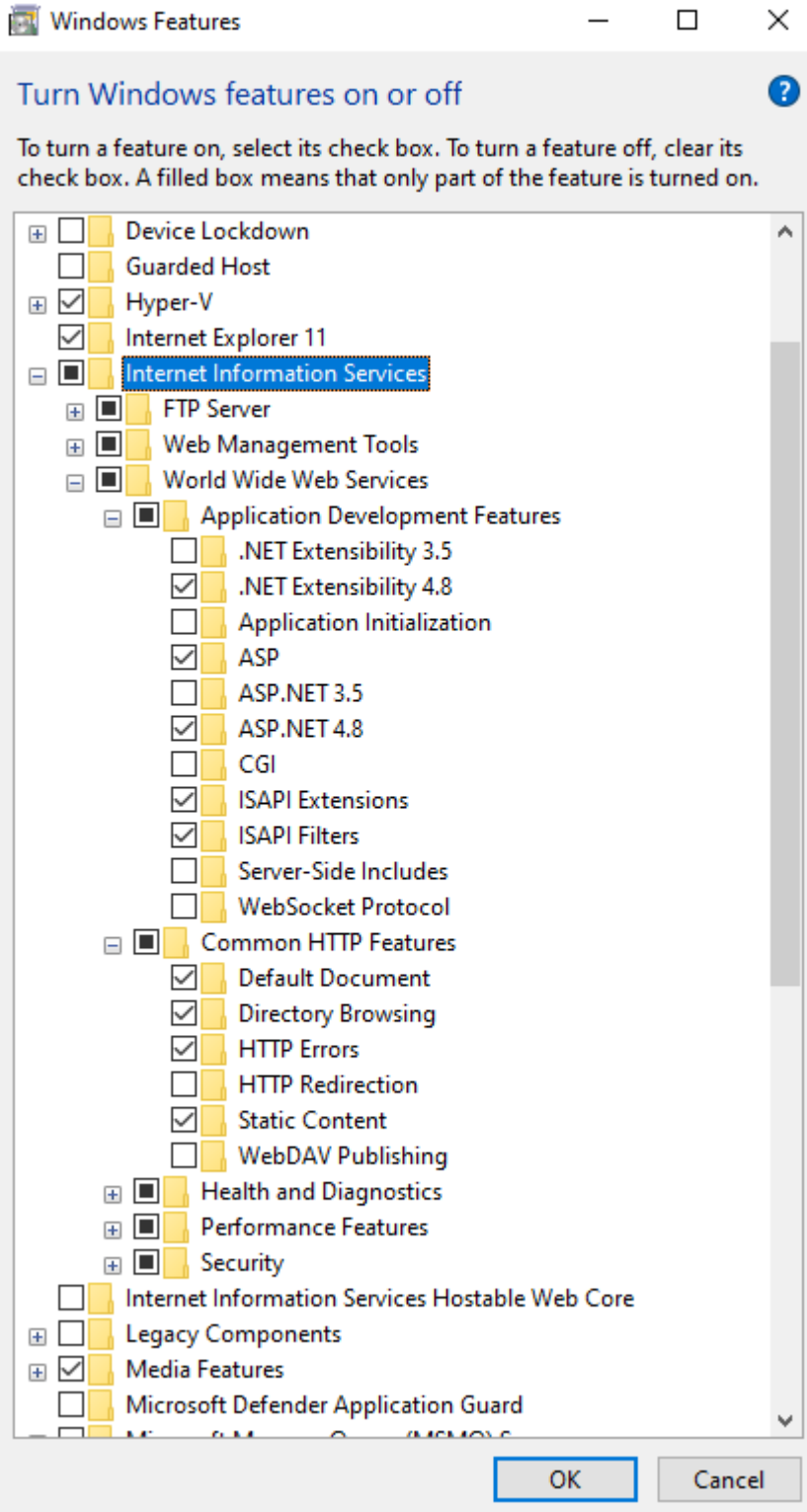


8. Click the ± to expand **World Wide Web Services**.

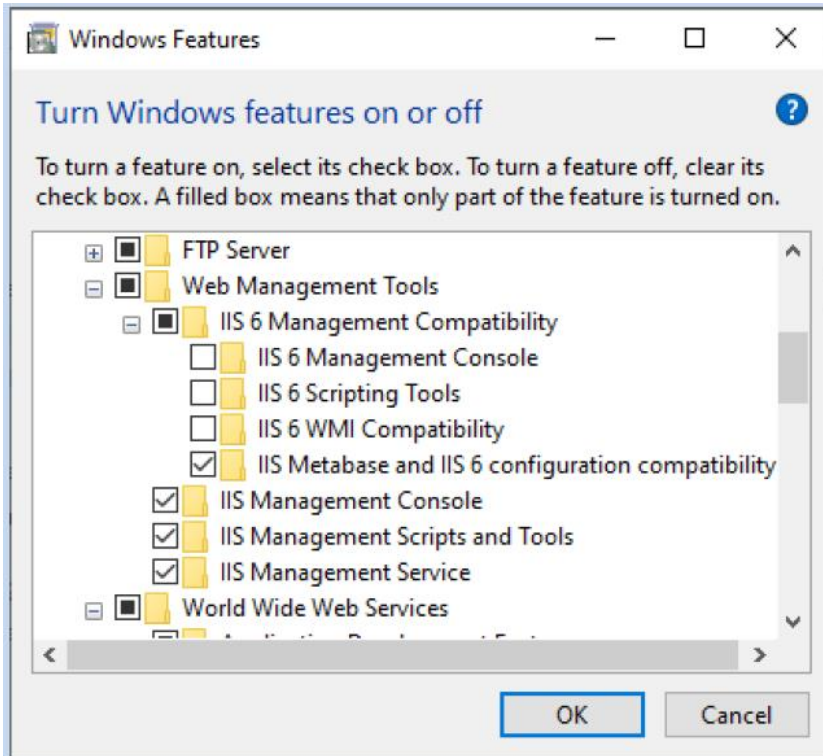


9. Click the ± to expand **Application Development Features** and **Common HTTP Features**.

10. Ensure the below options are checked.



Note: It is recommended to install the **Web Management Tools**.



- Check topic “Install the Thin Client software” Pg.42 from the EMSE manual to see more detailed information.

Resources:

Latest available manual (01/07/2024):

Title: EcoStruxure™ Machine SCADA Expert, Technical Reference Manual

Link: <https://www.se.com/ww/en/download/document/EIO0000002448/>

Latest Revision: 01/17/2025

Version: 3