

How to update the ZBRN1&ZBRN2 firmware?

I- Type of publication

<input type="checkbox"/>	Typical application
<input checked="" type="checkbox"/>	Best known Method (BKM)
<input type="checkbox"/>	Troubleshooting guide

<input type="checkbox"/>	Level 2 use
<input type="checkbox"/>	Internal use
<input checked="" type="checkbox"/>	Customer

II- Product

- Product range:

Harmony XB5R ▼

- Product family:

ZBRN1/ZBRN2 ▼

III- Topic

This application sheet describes by an example how to update the firmware of ZBRN1 or ZBRN2 access point

IV- Description

1. Set of equipment:



2. PC configuration :

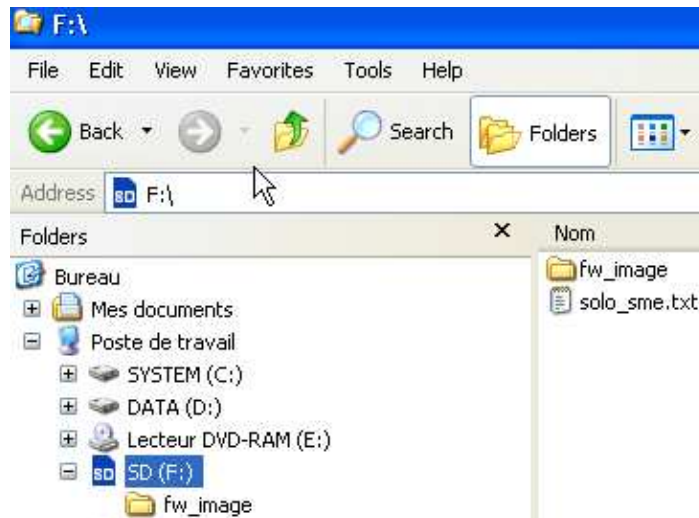
- ✓ SD card slot available in the PC

3. Method to update the firmware of the access point

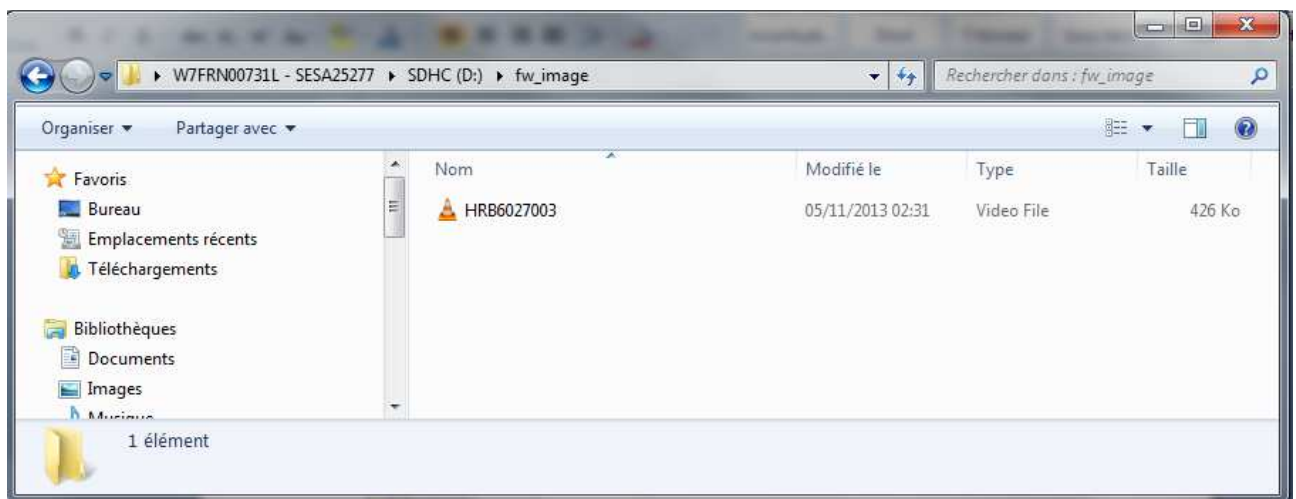
Very important

Be prepared, to keep the access point on powered during the firmware update procedure, otherwise the product will be destroyed

- ✓ Insert the SD card into the PC slot
- ✓ At the root of the SD card, using the PC, create a directory called **“fw_image”**
- ✓ At the root of the SD card, using the PC, create an empty “TXT” file called **“solo_sme.txt”**



- ✓ After you get the binary file from schneider-electric.com range XB5R, copy this file under the directory “fw_image” on the SD card. See example below for an update to V1.5



- ✓ Remove SD card from the PC slot
- ✓ Insert this SD card into the access point slot (upper face upside down)
- ✓ Using the jog dial of the access point when “rdy” is visible
- ✓ Push on it, you will see “Conf”
- ✓ Turn right the jog dial right one time, you will see “di Ag”
- ✓ Push on the jog dial, one time, and turn right until you see “d5”
- ✓ Push on the jog dial, one time, and turn right until you see “Fc”

- ✓ Push on the jog dial, one time, you will see “F₁UP”
- ✓ Push on the jog dial, one time, you will still see “F₁UP”, but now blinking
- ✓ Wait until the access point reboot

Very important

Be prepared, to keep the access point on powered during the firmware update procedure, otherwise the product will be destroyed

- ✓ The reboot ended, remove SD card from the access point slot