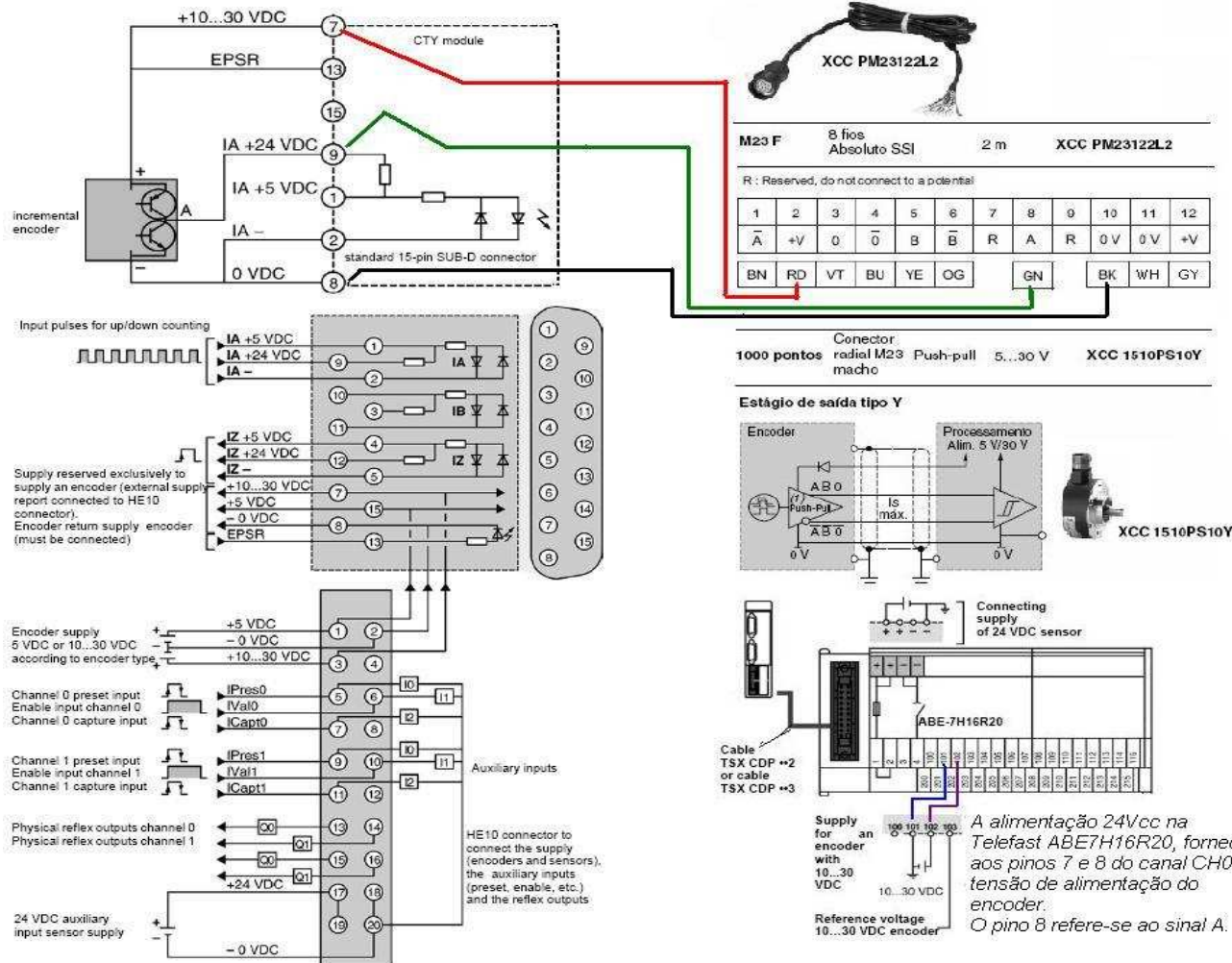


Modicon Premium

Módulo de contagem rápida – TSXCTY2A.

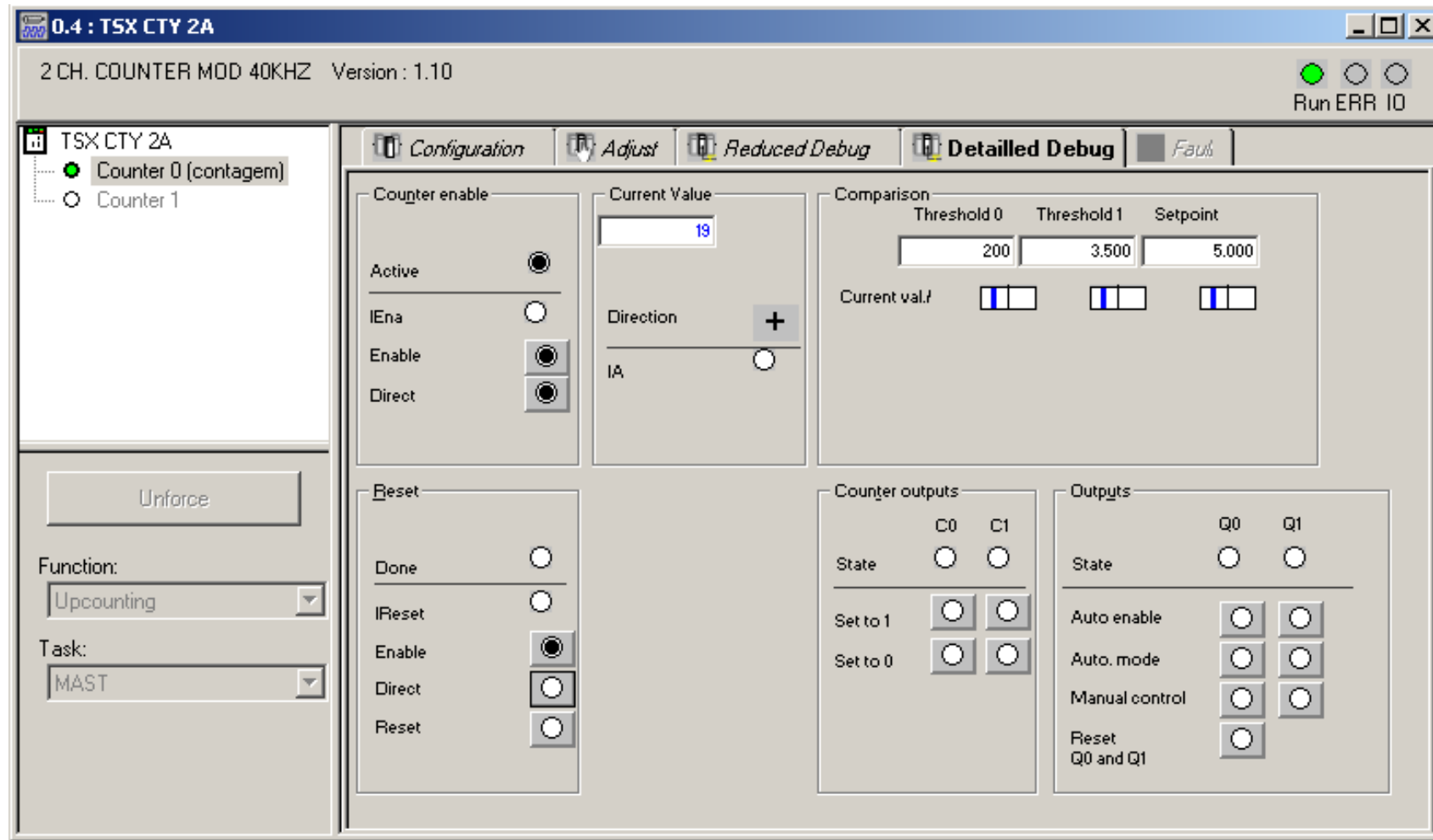
Hardware

- Esquemas de ligação:



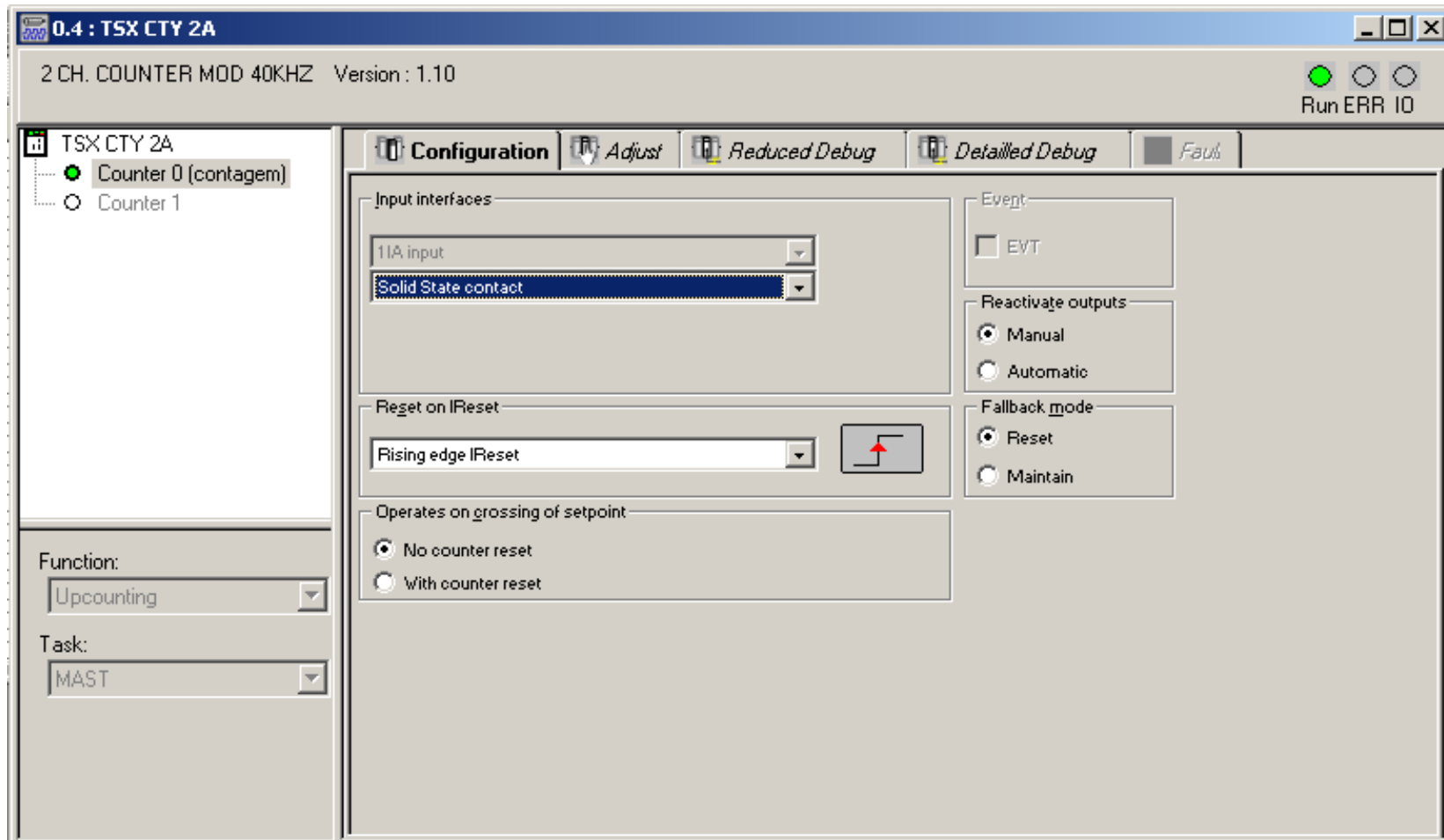
UnityPro

- TSXCTY2A – Configuração:



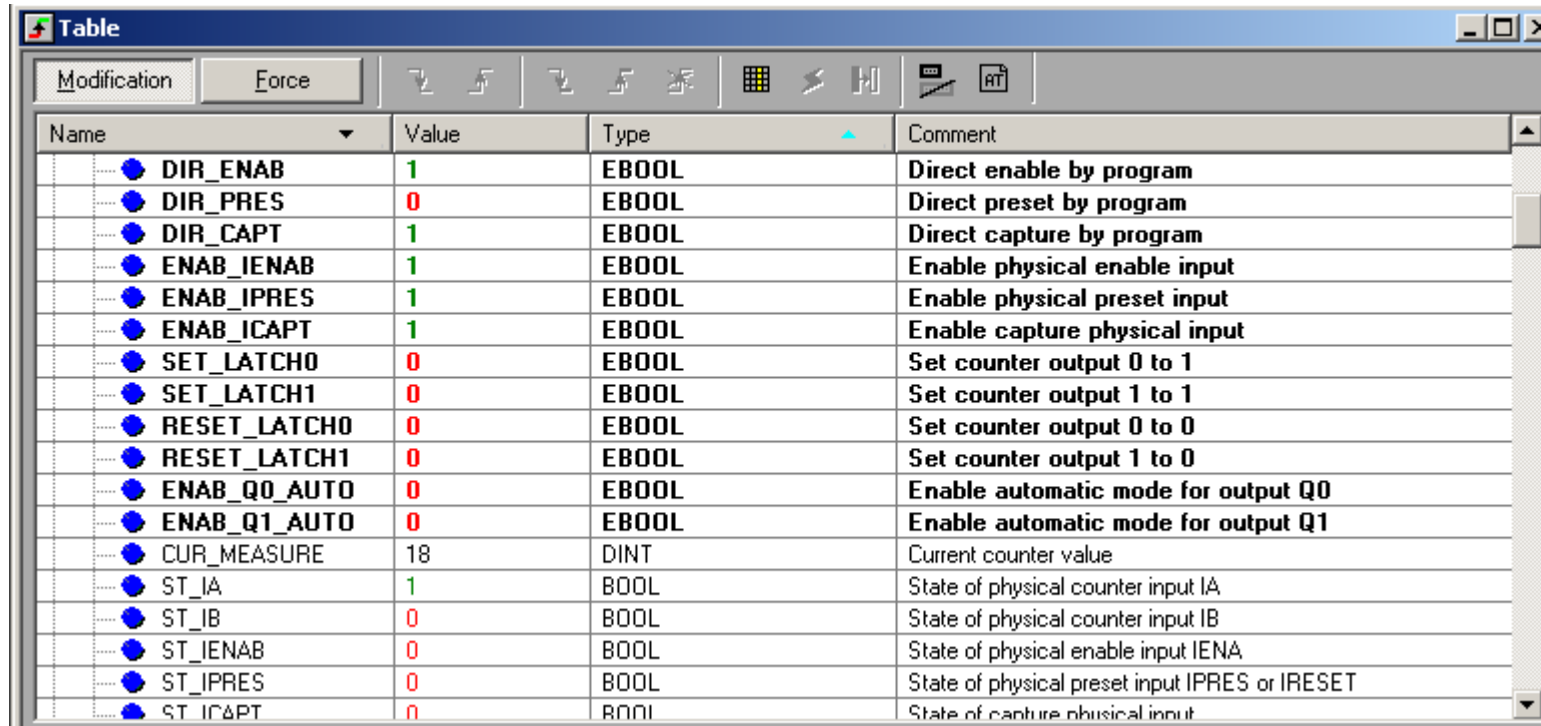
UnityPro

- TSXCTY2A – Configuração:



UnityPro

- Animation tables:



The screenshot shows a software window titled "Table" with a toolbar and a table of variables. The table has four columns: Name, Value, Type, and Comment. Each row represents a variable with a blue circular icon to its left. The values are color-coded: green for '1' and red for '0'.

Name	Value	Type	Comment
DIR_ENAB	1	EBOOL	Direct enable by program
DIR_PRES	0	EBOOL	Direct preset by program
DIR_CAPT	1	EBOOL	Direct capture by program
ENAB_IENAB	1	EBOOL	Enable physical enable input
ENAB_IPRES	1	EBOOL	Enable physical preset input
ENAB_ICAPT	1	EBOOL	Enable capture physical input
SET_LATCH0	0	EBOOL	Set counter output 0 to 1
SET_LATCH1	0	EBOOL	Set counter output 1 to 1
RESET_LATCH0	0	EBOOL	Set counter output 0 to 0
RESET_LATCH1	0	EBOOL	Set counter output 1 to 0
ENAB_Q0_AUTO	0	EBOOL	Enable automatic mode for output Q0
ENAB_Q1_AUTO	0	EBOOL	Enable automatic mode for output Q1
CUR_MEASURE	18	DINT	Current counter value
ST_IA	1	BOOL	State of physical counter input IA
ST_IB	0	BOOL	State of physical counter input IB
ST_IENAB	0	BOOL	State of physical enable input IENA
ST_IPRES	0	BOOL	State of physical preset input IPRES or IRESET
ST_ICAPT	0	BOOL	State of capture physical input