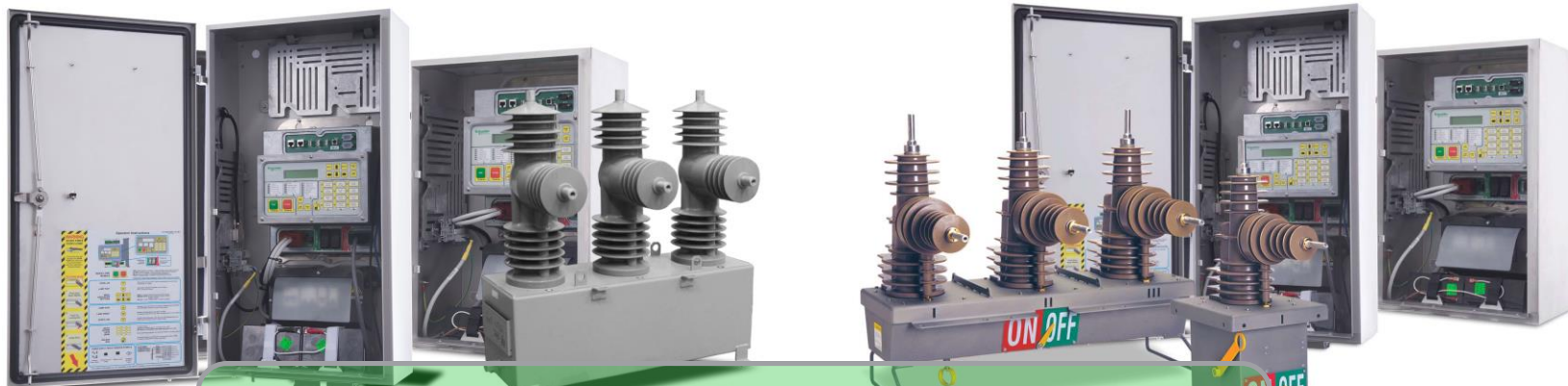


ADVC Firmware Upgrade





Firmware Upgrade



About firmware

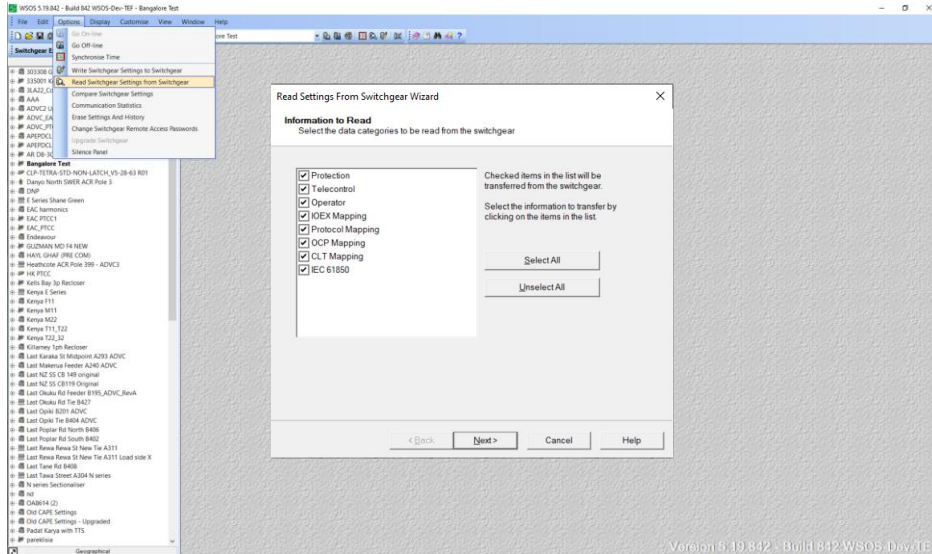


- ❑ **Firmware** is the software used by each of the hardware components in the **ADVC Controller**
- ❑ Updated **Firmware** versions are released regularly by **Schneider** to introduce new features to the ADVC Controller or rectify issues
- ❑ Customers should develop a **Firmware update process** if they wish to use updated features in their controllers
- ❑ The upgrade process preserves all existing settings, but **Read Switchgear Settings from Switchgear** before, and **Write Switchgear Settings to Switchgear** after, firmware upgrades is recommended
- ❑ The **ADVC Loader in WSOS5** is designed for all Firmware version A41-03.00+
- ❑ Updating Firmware is a simple process that is done using **WSOS5** and a Firmware file – typically ADVC Controllers are updated individually
- ❑ The **Firmware** is a zip file with the naming convention of:
 - ❑ **ADVC2**: A4*-**.**.zip **ADVC3**: A5 *-**.**.zip
- ❑ The current **WSOS5** and **Firmware** files can be accessed from the following link:
 - ❑ <https://www.se.com/in/en/faqs/FA328870/>

Start WSOS5 and perform Read



- ❑ Download & unzip the updated firmware
- ❑ Open the **WSOS5** software, select, and **Set Active** the switchgear for which you will perform the **Firmware Upgrade**.
- ❑ Connect to*, and go **online** to the controller, and select **Options / Read Switchgear Settings from Switchgear**, select all required categories and the local file will be updated with current online settings



*using a USB printer cable, serial cable, or network cable

Start the ADVC Loader Tool



- ❑ In WSOS5, select **Customise / ADVC Loader Tool** and enter password **WSOS** – the **ADVC Loader Wizard** is displayed

WSOS 5.19.842 - Build 842.WSOS.Dev-TEF - Bangalore Test

File Edit Options Display Customise View Window Help

Switchgear Explorer

ADVC Loader Wizard

Choose Switchgear and File to load

Switchgear

Enter
Ent

Switchgear Name

- DNP
- Shweta1
- RC-T001-T01
- Last NZ SS CB 149 original
- U27 ADVC3 AR (EPN) RBE v4 FH Test U series
- sha tau kok check point p4 (1)
- Last Tawa Street A304 N series
- RC-T002-T01
- Killamey 1ph Recloser
- Univ-FRC N38-ADVC3-TETRA_A50-09-00 R03
- OA8614 (2)
- Bangalore Test
- RC-CW-L1

File

Show Details

Compare settings after download

Browse

< Back Next > Cancel Help

Version 5.19.842 - Build 842.WSOS.Dev-TEF

Ready Bangalore Test TCP/IP using 10.179.184.77 Off-line ADR is INACTIVE

Select the ADVC Controller(s) to update



- Select / tick the switchgear file to update

ADVC Loader Wizard

Choose Switchgear and File to load

Switchgear

Switchgear Name
<input type="checkbox"/> DNP
<input type="checkbox"/> Shweta1
<input type="checkbox"/> RC-T001-T01
<input type="checkbox"/> Last NZ SS CB 149 original
<input type="checkbox"/> U27 ADVC3 AR (EPN) RBE v4 FH Test U series
<input type="checkbox"/> sha tau kok check point p4 (1)
<input type="checkbox"/> Last Tawa Street A304 N series
<input type="checkbox"/> RC-T002-T01
<input type="checkbox"/> Killarney 1ph Recloser
<input type="checkbox"/> Univ-FRC N38-ADVC3-TETRA_A50-09-00 R03
<input type="checkbox"/> OA8614 (2)
<input checked="" type="checkbox"/> Bangalore Test
<input type="checkbox"/> RC-CW-L1

File

Show Details

Compare settings after download

Browse

< Back Next > Cancel Help



Locate & select the Firmware file to use



- Browse to the Firmware file to be used for the update *Axx-xx.xx.advc*

ADVC Loader Wizard

Choose Switchgear and File to load

Switchgear

Switchgear Name
<input type="checkbox"/> E Series Shane Green
<input type="checkbox"/> Last Okuku Rd Tie B427
<input type="checkbox"/> TEF
<input type="checkbox"/> AR D8-3C Yeri 30Aug2019
<input type="checkbox"/> Kenya T22_32
<input type="checkbox"/> Test E Series
<input type="checkbox"/> Last Poplar Rd North B406
<input type="checkbox"/> RL515117_VSL1306XPIL1304_061120
<input type="checkbox"/> REC PLTD UPDATE
<input type="checkbox"/> Padat Karya with TTS
<input type="checkbox"/> Kenya M22
<input checked="" type="checkbox"/> AAA
<input type="checkbox"/> Last Karaka St Midpoint A293 ADVC

File

C:\Users\SESA28669\Downloads\Work Stuff\ADVC Firmware\ADVC2\A45-57.05.advc

Show Details
 Compare settings after download
 Force Download

- Show details:
 - Tick to show details during loading
- Compare settings after download:
 - Tick to launch Compare Settings function when loading is complete
- Force Download:
 - Instead of just updating changed modules, tick this to force update of all modules

Start the Update Process



- Select **Next >** to start the update process

ADVC Loader Wizard

Load Progress

Switchgear	Bangalore Test (1 of 1)
Progress	0%
Status	Going on-line.



Status field states

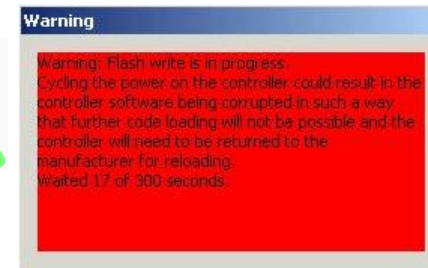


□ The processes indicated in the **Status** field may include:

- Initialising...
- Going On-line
- Waiting X of 120 seconds to go On-line
- Reading ADVC version Information
- Waiting for load to complete. Time Elapsed XX:XX:XX
- Writing to Flash. Time Elapsed XX:XX:XX
- Load Committed.
- Waited X of 120 seconds to go On-line
- Reading SCEM data. Waited X of 120 seconds.
- Going On-line
- Waiting X of 120 seconds to go On-line
- Reading ADVC version Information
- Reboot successful. Finished.

Other states shown in the **Status** field include:

- All Up to Date. Nothing to load. Finished.
- Load Aborted by error in load
(rollback is automatic – original install is unchanged)



Load Confirmation

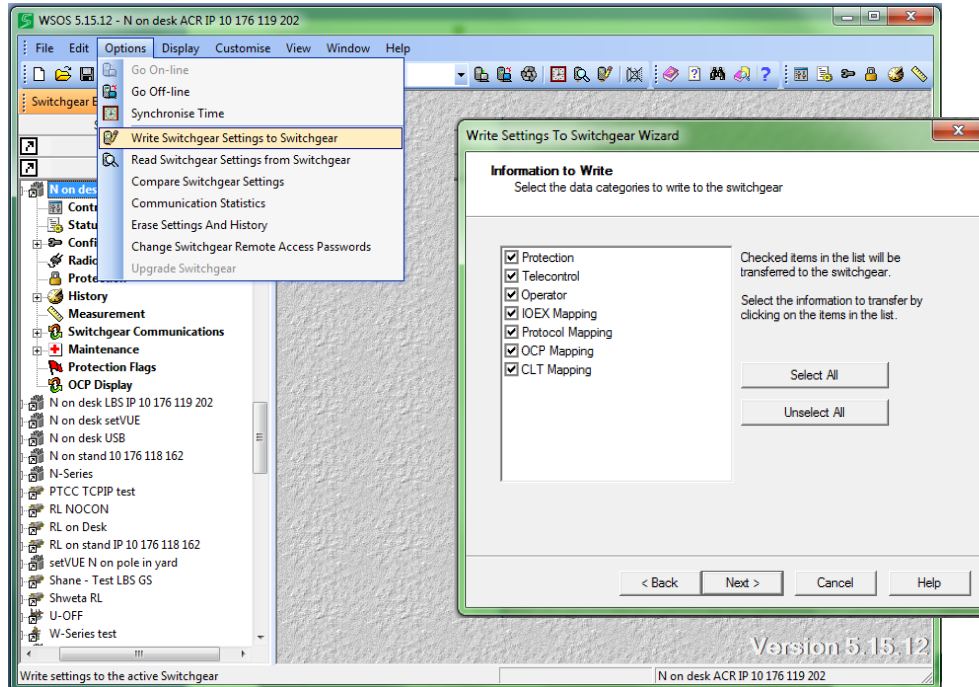
- ❑ Go online in **WSOS5 (Options / Go On-line)** and confirm the current Firmware Version in the **ADVC Controller (File / Switchgear Properties)**



Perform Write in WSOS5



- Whilst **online** to the switchgear in **WSOS5**, select **Options / Write Switchgear Settings to Switchgear**, select all required categories and the online file will be updated with the offline settings saved before the firmware upgrade.



Exit & Disconnect



- ❑ After completing the **Firmware Upgrade**, select **File / Exit** – this will exit the **WSOS5** program
- ❑ Disconnect your communications cable (USB printer, Serial or Network)
- ❑ If the controller is to be stored before installation, ensure that you power down the controller by switching all MCB's to OFF



Life Is On

Schneider
Electric