

SPECIFICATIONS:

CONSTRUCTION: PER UL STANDARD 891 - SUITABLE FOR USE AS SERVICE ENTRANCE EQUIPMENT.

ENCLOSURE: TOTALLY ENCLOSED, FRONT ACCESSIBLE, CODE GAUGE STEEL, ANSI #49 BAKED ENAMEL FINISH.

INCOMING CABLE LUGS: ONE TWIN CONDUCTOR #2-600 KCMIL (AL OR CU)

MAIN SWITCH: INCLUDES FACTORY INSTALLED CLASS T 600V FUSES

DISTRIBUTION PANEL: NQ HAS PROVISIONS FOR 42 POLE SPACES USING QO, QOB, QO-H, QOB-VH, QO-VH, QOB-VH, QH AND QHB CIRCUIT BREAKERS.

SUBFEED CAPABILITIES: PROVISIONS FOR TWO HLP, JLP, SUBFEED CIRCUIT BREAKERS, LOADSIDE LUG: H 100-150A 14-3/0 AWG, J 175A 4-4/0 AWG, 200-225A 3/0-350 KCMIL.

METERING: CURRENT TRANSFORMER COMPARTMENT PER EUSERC REQUIREMENTS.

OPTIONAL LOADSIDE WIREWAY: 11.50/[292] WIDE PERMITS TOP EXIT OF LOAD CABLES. (NOT AVAILABLE ON TYPE 3R ENCLOSURES.)

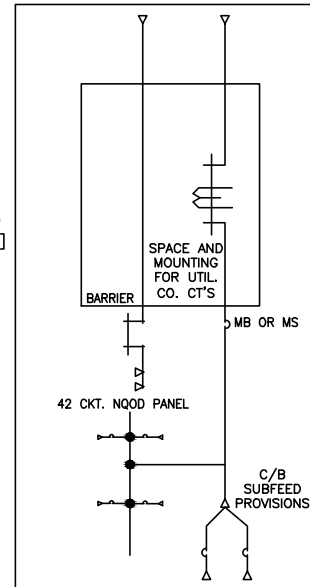
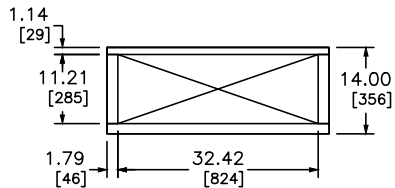
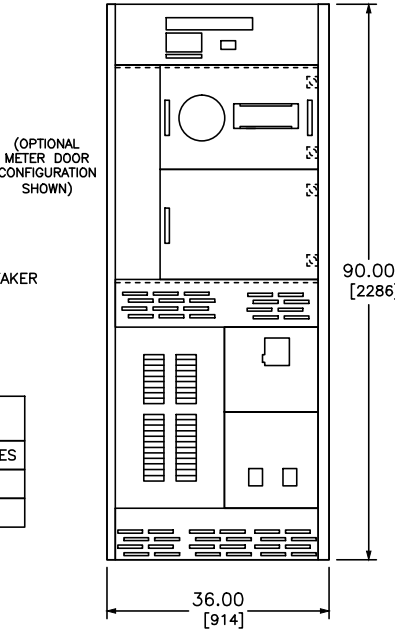
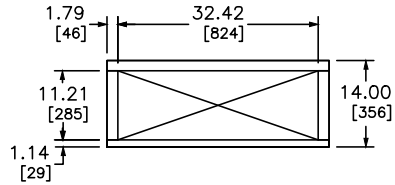
BUS MATERIAL: SEE CATALOG NUMBER TABLE

THE SHORT-CIRCUIT CURRENT RATING OF THIS SWITCHBOARD SECTION IS EQUAL TO THE LOWEST SHORT-CIRCUIT RATING OF ANY SECTION ELECTRICALLY CONNECTED IN SERIES, OR THE LOWEST MARKED RATING AT THE SUPPLY VOLTAGE OF ANY CIRCUIT BREAKER OR SERIES CONNECTED RATING INSTALLED IN THIS SECTION. THE SECTION'S MAXIMUM SHORT-CIRCUIT CURRENT RATING IS 65,000 RMS SYMMETRICAL AMPERES AT 240V.

**ADDITIONAL SHORT-CIRCUIT CURRENT RATINGS
BASED UPON SERIES CONNECTED RATINGS**

SYSTEM VOLTAGE, AC	**MAXIMUM SHORT-CIRCUIT CURRENT RATING	MAIN FUSES		SQUARE D BRANCH CIRCUIT BREAKERS		
		CLASS	MAX AMP	CAT PREFIX	AMPERES	POLES
120/240V	42kA	T (600V)	400A	QO-VH, QOB-VH	15-30	1
240 VOLTS	42kA	T (600V)	400A	QO-VH, QOB-VH	15-150	2

** RMS SYMMETRICAL AMPERES



CATALOG NUMBER-SERIES E4

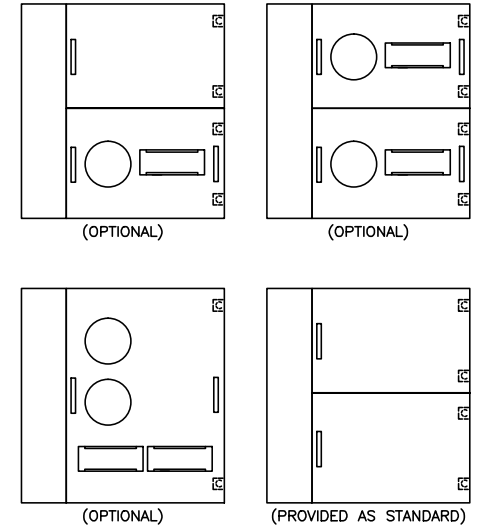
MAIN	400 A UNITS
BREAKER	SB324QS *
FUSIBLE	SF324QS ▲

* INDICATES COPPER BUS
▲ INDICATES ALUMINUM BUS

EUSERC REFERENCE

- EUSERC DWG 320 - INSTRUMENT COMPARTMENT
- EUSERC DWG 332 - 15" METER PANEL
- EUSERC DWG 333 - 30" METER DOOR

METER DOOR CONFIGURATIONS



DUAL DIMENSIONS: INCHES
MILLIMETERS



INDICATES RECOMMENDED CONDUIT AREA

NOTES:
SEE DRAWING SPEED_D11 FOR TYPE 3R ENCLOSURE DIMENSIONS.

NQ 240 VOLT 3 PHASE 4 WIRE
SPEED D SWITCHBOARD
ELEVATION



DWG# SPEED-D04
NO.