

FAQ : INTERBUS: How to connect CMDTOOL on a master?

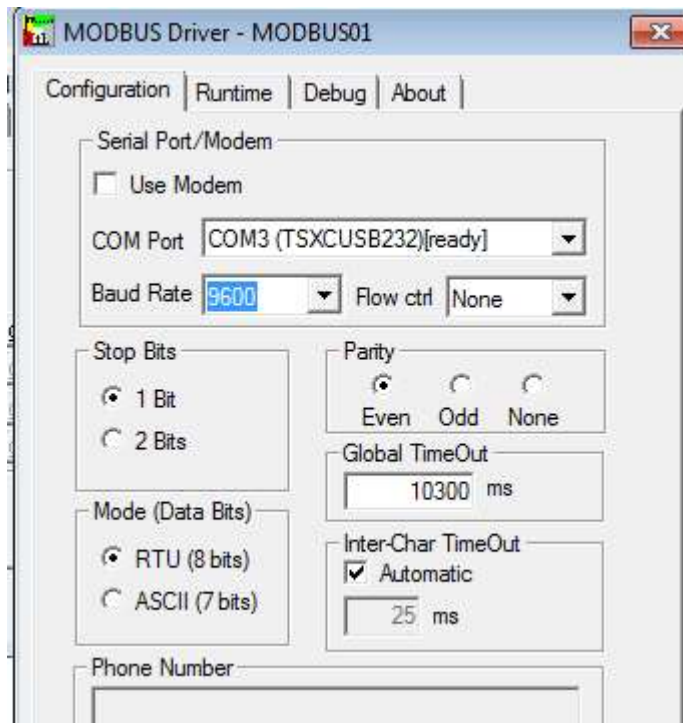
CMDTOOL is the software which allows to realize a diagnostic on Interbus fieldbus.

Most of the people get trouble to get a PC connected to an Interbus master.

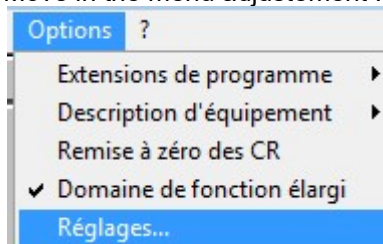
Here is a step by step procedure to succeed in this operation:

CMDTOOL must be connected to a TSXIBY100 by using a RS232/USB adapter.

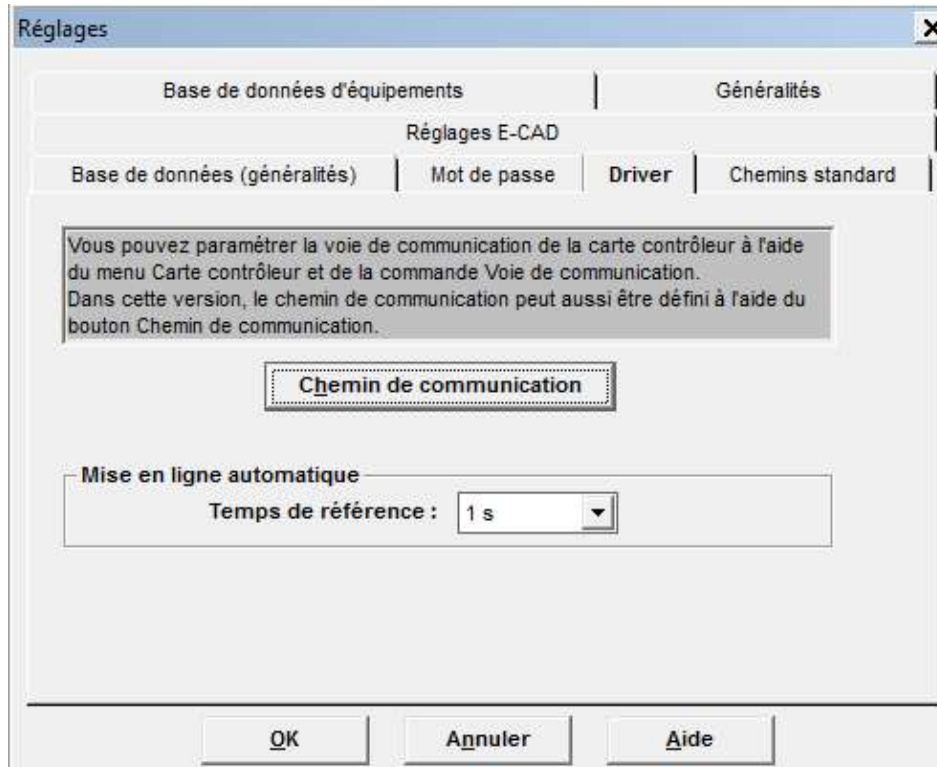
1. Plug the cable ref (TSXCBY010K 05A) between the adapter and the front panel connector of the coupler TSXIBY100.
2. Plug the USB connector of the RS232/USB adapter inside the PC
3. Start the tool driver-manager.
4. The modbus driver is attached to the COM3 and the baudrate is 9600b/sec.



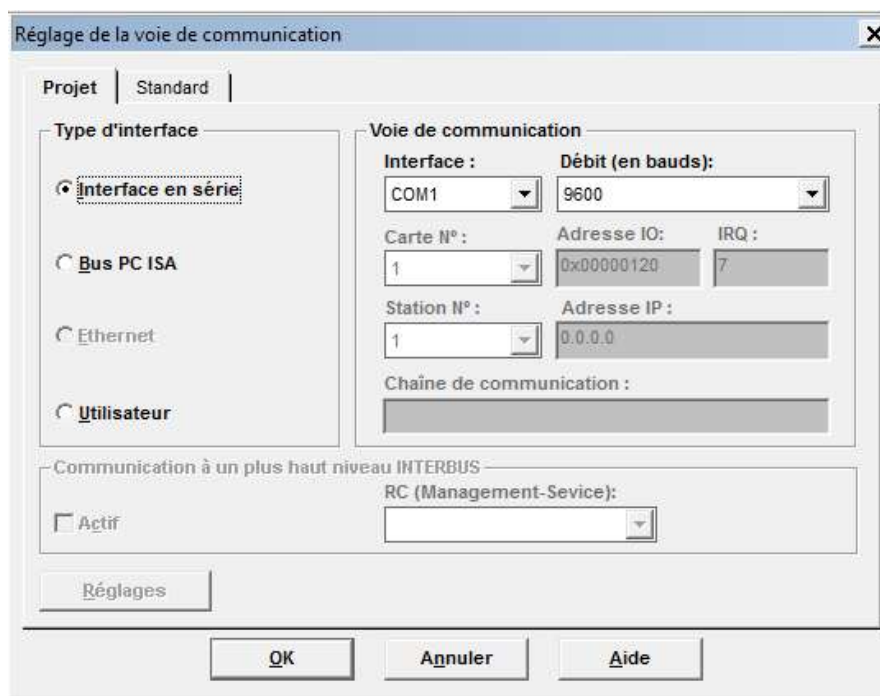
5. Start CMDTOOL.
6. Move in the menu adjustment :



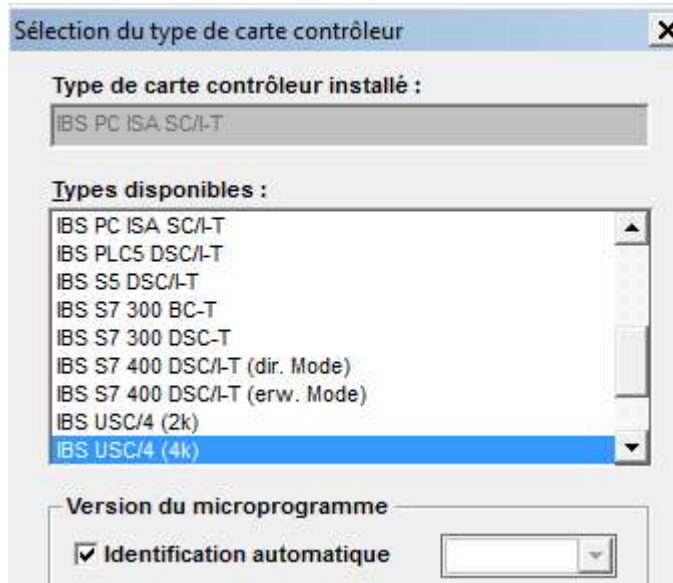
7. Select the reference time 1sec.



Then push on the button « chemin de communication ».

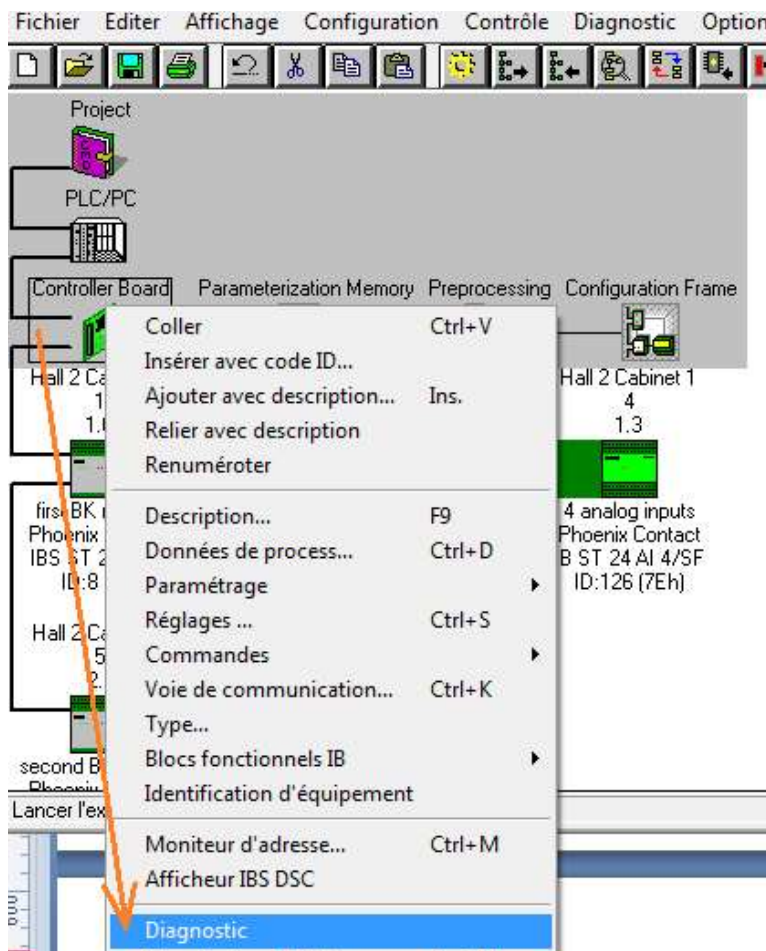


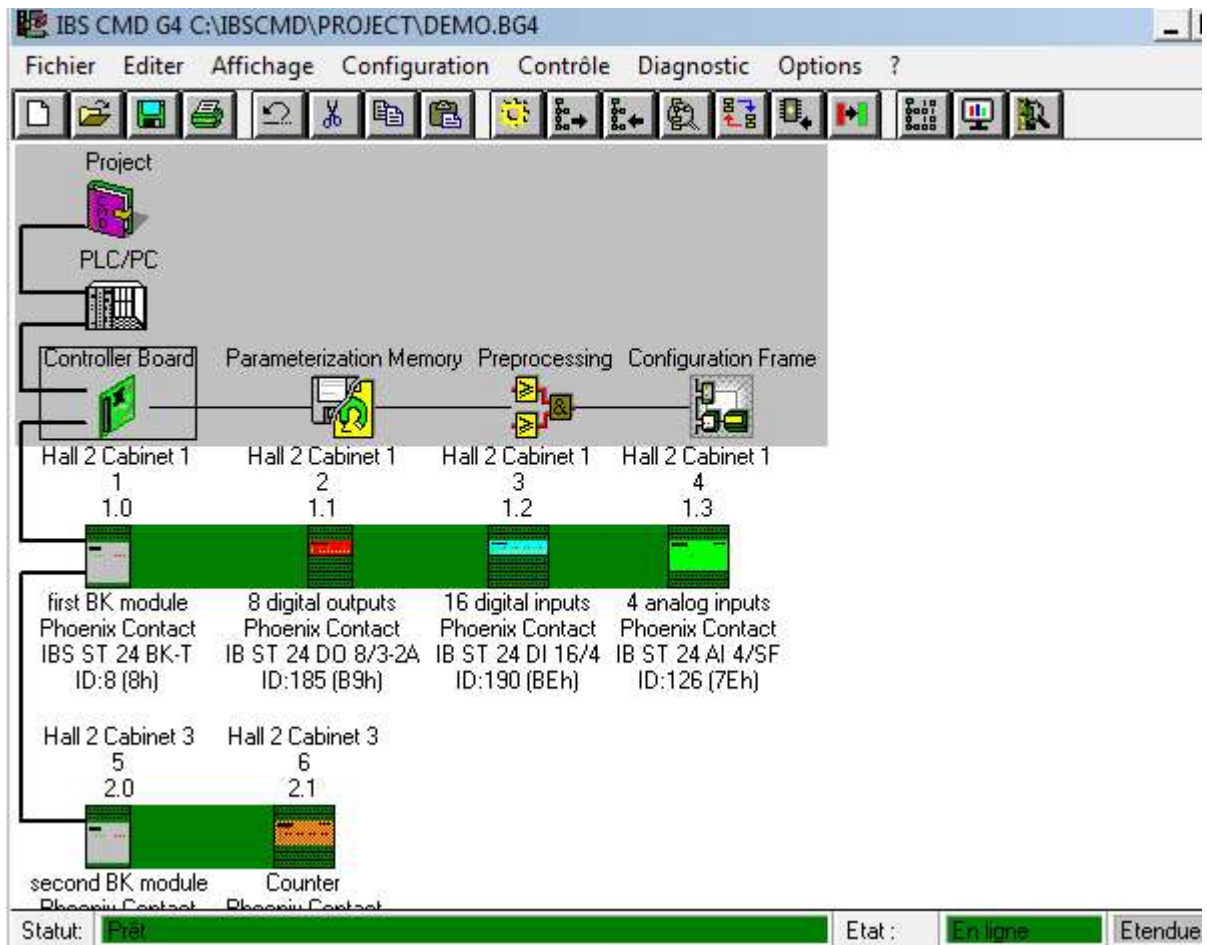
Select the IBY100 by selecting IBS USC4/4



Connect CMDTOOL to the IBY100 by pushing on this icon 

Right clic on the controller board then select diagnostic.





You are connected to the coupler.

To check the firmware version of the coupler, right clic on the controleur and select description.

