

M340 Connect to STB via NOC module

What is the purpose Simplify the configuration and show easy programming configure the STB DIO using NOC module compare with NOE (previous Solution of communication with DIO)

What units are effected

1. M340
2. STB Island
3. NOC module

Details This application is divided into several parts

Section	Title
1	Parts List
2	Architecture System
3	Step by Step
3	Online Testing
4	Remarks

Section 1: Parts list

Parts List table Items used in the test

Items	Part numbers	Description
PLC M340	BMXP3420202	PLC Hardware
Comm Module	BMXNOC0401	Communication Module
DIO	STBNIP2311	Island Module of DIO
Software	UNYSPUSFUV1X	Unity Pro V 11

Section 2: Architecture System



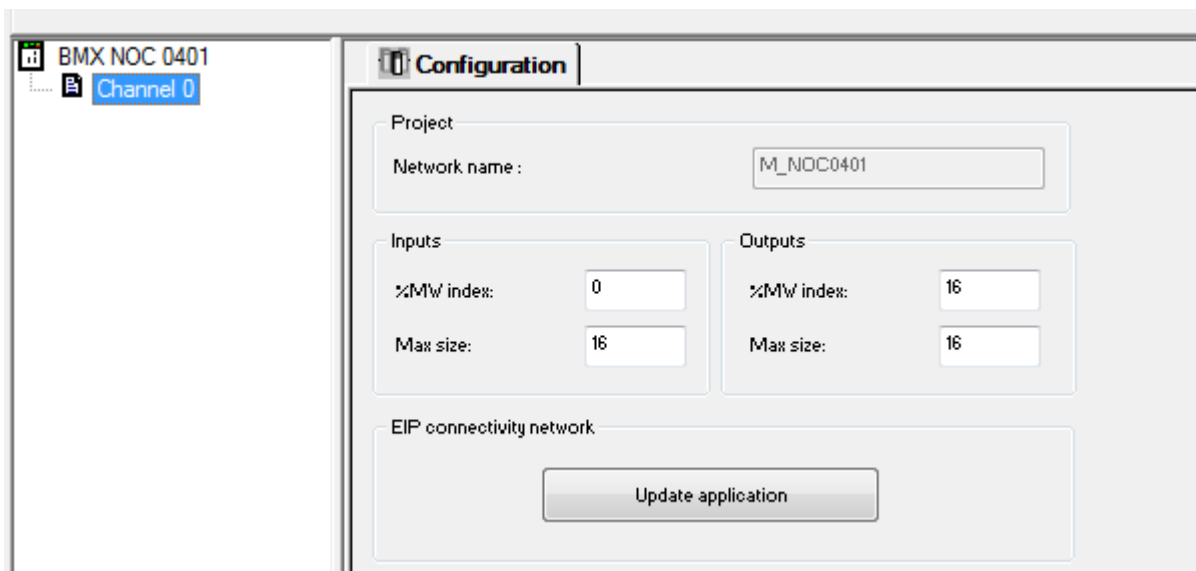
Section 2: Architecture System step by step

Step by step configuration software on Unity Pro :

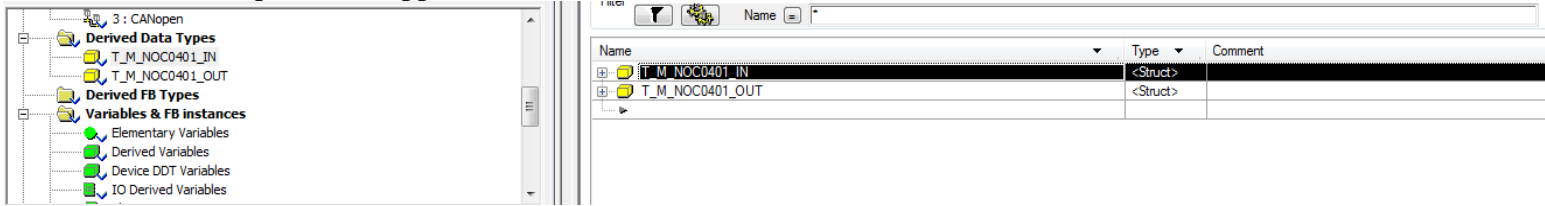
Hardware Configuration:

PLC setting

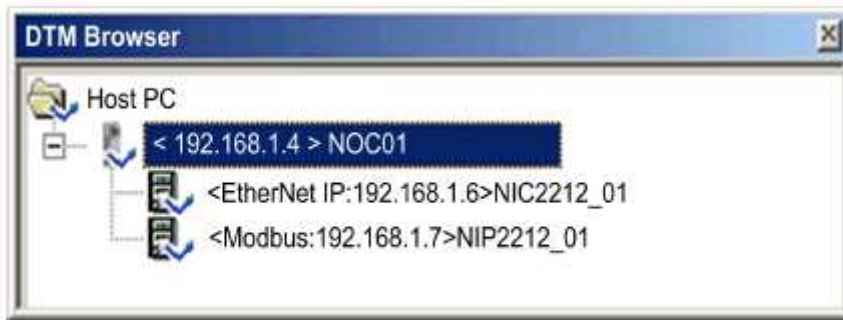
1. Configure the Input and output data words for buffering the data communication :



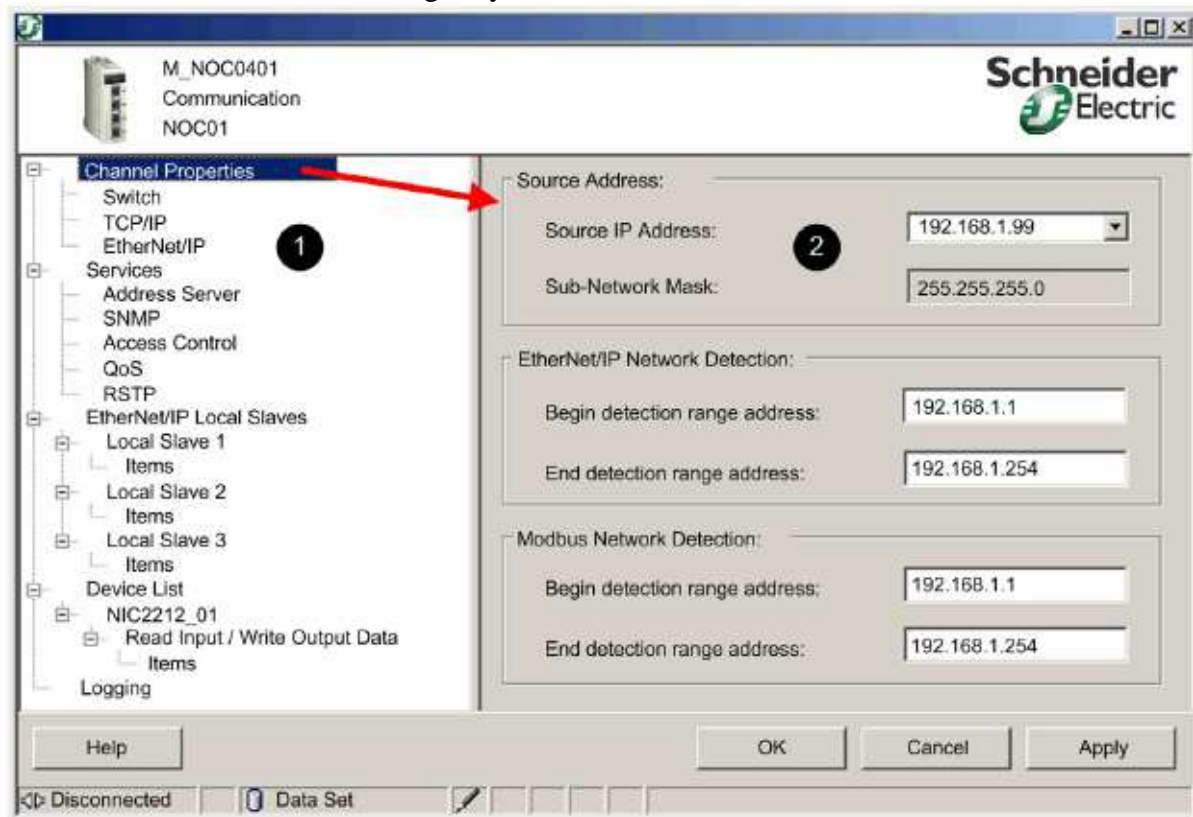
2. Update the Application



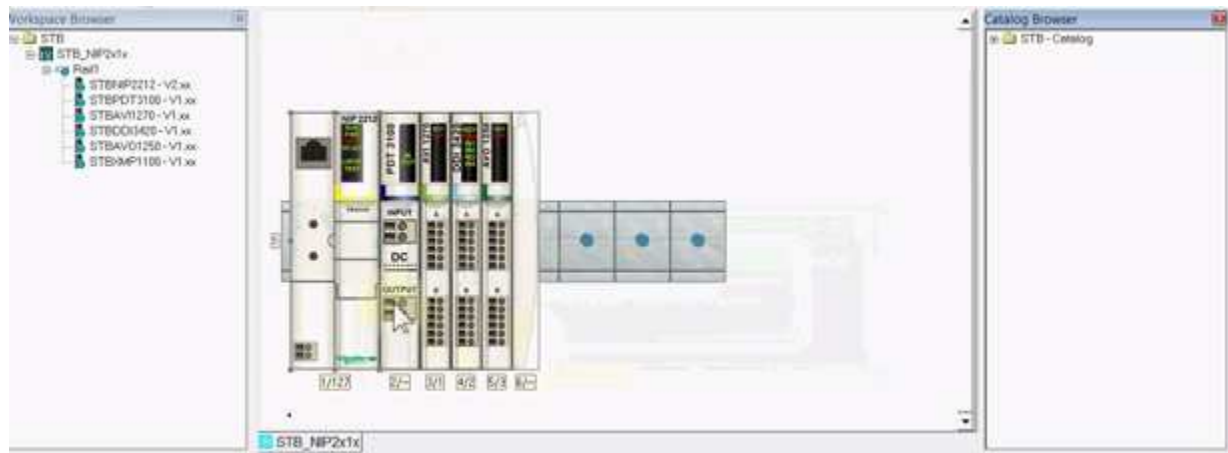
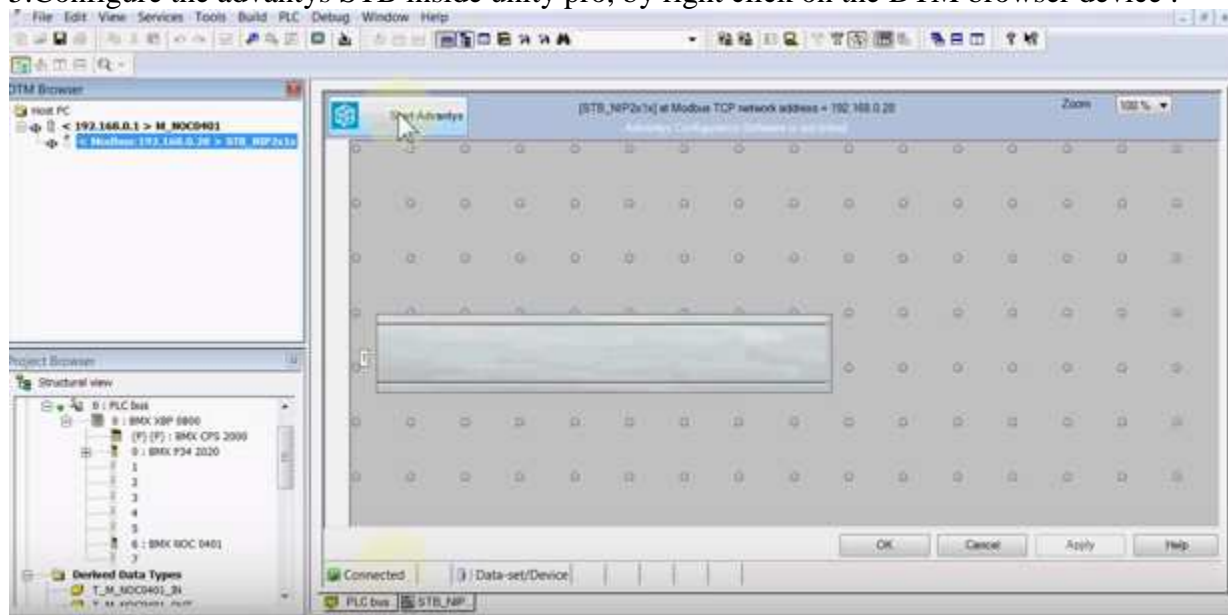
3. Configure The DTM Browser



4. Use device editor to configure your NOC module

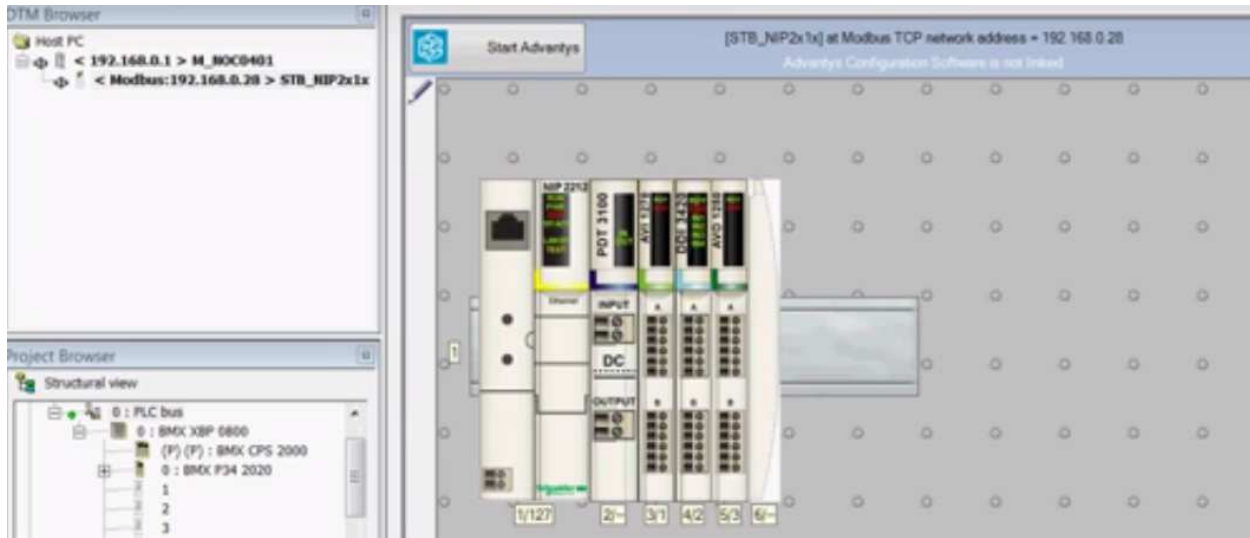


5. Configure the advantys STB inside unity pro, by right click on the DTM browser device :



General | Parameters | IO Image | Diagnostics | Options | IO Mapping | Hexadecimal

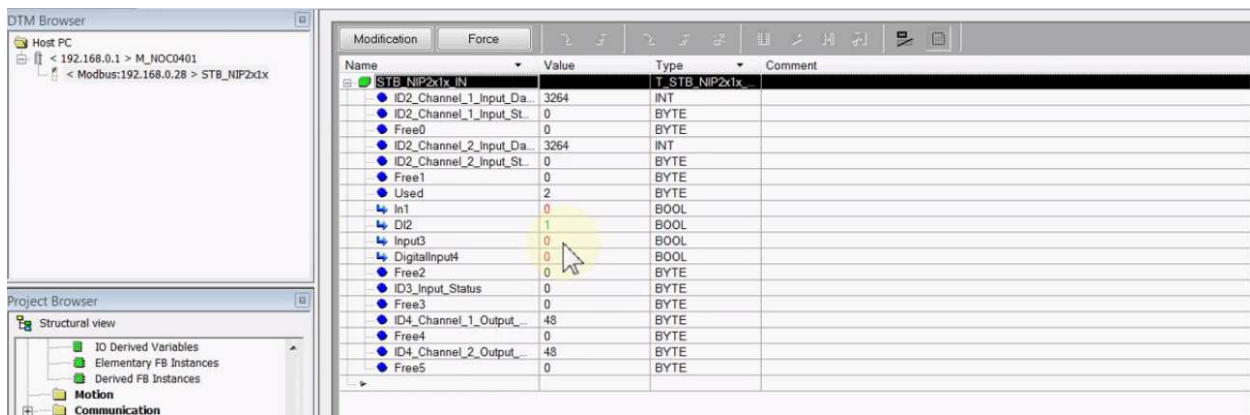
Data Item Name	Current Value	User Defined Label	Memory Address (dec)
Input Data	---		45396
• Channel 1	---	in1	
• Channel 2	---	DI2	
• Channel 3	---	Input3	
• Channel 4	---	Input4	
Input Status	---		45397



Section 4: Online Testing

Online testing :

1. Download the PLC program to the M340 and Advantys STB hardware
2. Test the program
3. If connection success, Animation table will show the result for communication data between input and output



Section 5: Remark

The FDT DTM features allows communication with every TCP IP devices become more easy, this feature also bring the Quality Of Service to be deterministic protocol.

With NOC0410 module all the configuration will become single environment using Unity Pro, this can reduce the engineering time and easy for troubleshooting.
