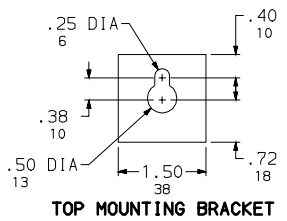
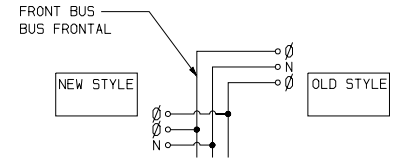
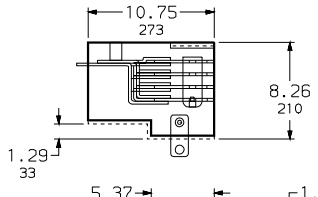


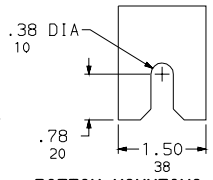
**EZM1 TRANR**  
BUS RATING: 1200A MAX  
120/240 VAC 1Ø MAX



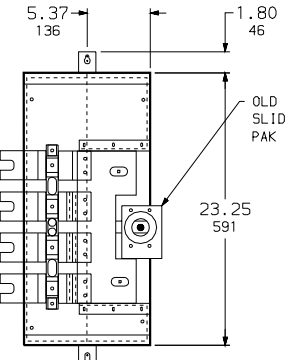
**TOP MOUNTING BRACKET**



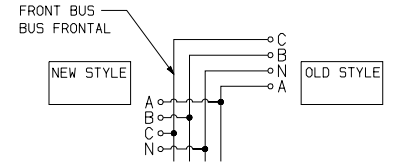
**EZM1 TRANR**  
BUS RATING: 1200A MAX  
120/240 VAC 1Ø MAX



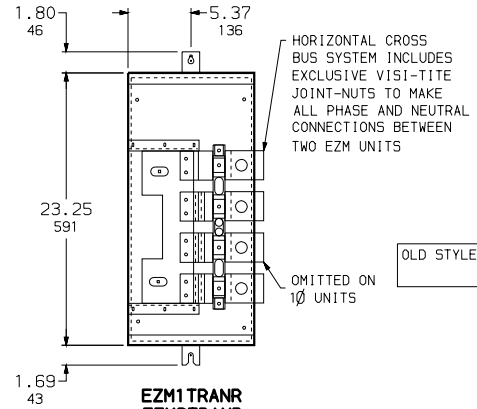
**BOTTOM MOUNTING BRACKET**



**EZM1 TRANR**  
**EZM3 TRANR**



**EZM3 TRANR**  
BUS RATING: 1200A MAX  
240/120 VAC 3Ø MAX



**EZM1 TRANR**  
**EZM3 TRANR**

**EZM3 TRANR**  
BUS RATING: 1200A MAX  
240/120 VAC 3Ø MAX

THIS TRANSITION SECTION MAY BE USED TO ADD A NEW STYLE SQUARE D PANELBOARD MODULE OR PANELBOARD MODULE ACCESSORY TO AN EXISTING SQUARE D PANELBOARD MODULE OR PANELBOARD MODULE ACCESSORY WITH THE FOLLOWING CATALOG PREFIXES AND SERIES:

OLD STYLE SQUARE D PANELBOARD MODULE OR PANELBOARD MODULE ACCESSORY, CATALOG NUMBER PREFIX	OLD SERIES	NEW STYLE SQUARE D PANELBOARD MODULE OR PANELBOARD MODULE ACCESSORY, CATALOG NUMBER PREFIX	NEW SERIES
EZM	001 002 003 004 E01 E02	EZM	M01

NOTES:  
FINISH - GRAY BAKED ENAMEL POWDER COAT PAINT OVER CLEANED GALVANNEALED STEEL.  
UL LISTED - FILE E131840, VOL. M  
MAIN HORIZONTAL CROSS BUS RATED AT 1200 AMPERES.  
GANGABLE MULTI-METERING EQUIPMENT IS DESIGNED FOR WALL MOUNTING ONLY (NOT USABLE AS FLOOR STANDING EQUIPMENT).  
UNMETERED COMPARTMENTS ARE SEALABLE BY UTILITY.  
SEE SUPPLEMENTAL DIGEST SD172 FOR ADDITIONAL INFORMATION.

DUAL DIMENSIONS: INCHES  
MILLIMETERS

SYSTEM TYPE (IN)	SERVICE PROVIDED (OUT)	ATTACHMENT LOCATION	CATALOG NUMBER	DESCRIPTION
1Ø 3W 120/240 VAC	1Ø 3W 120/240 VAC	ADD TO RIGHT OF OLD STYLE 1Ø EZM LINEUP	EZM1TRANR	TRANSITION SECTIONS TO CONVERT FROM AN EXISTING OLD STYLE EZM LINEUP TO A NEW STYLE EZM LINEUP ON 1Ø OR 3Ø DEVICES
		ADD TO LEFT OF OLD STYLE 1Ø EZM LINEUP	EZM1TRANR	
3Ø 4W 208Y/120 VAC OR 240/120 VAC DELTA	3Ø 4W 208Y/120 VAC OR 240/120 VAC DELTA	ADD TO RIGHT OF OLD STYLE 3Ø EZM LINEUP	EZM3TRANR	
		ADD TO LEFT OF OLD STYLE 3Ø EZM LINEUP	EZM3TRANR	

EZ METER-PAK GANGABLE  
MULTI-METERING EQUIPMENT  
1200A BUSSED OLD-NEW  
TRANSITION SECTIONS  
INDOOR/OUTDOOR NEMA 3R ENCLOSURES



DWG. NO. 3187