



How to Activate and Use Your Floating License

EcoFtruxure™
Control Expert



How to Activate and Use Your Floating License

EcoStruxure Control Expert proposes a new, easy-to-use, flexible licensing model.

This document provides key information to use the software.

Additional information is available in the EcoStruxure Control Expert Installation Manual.

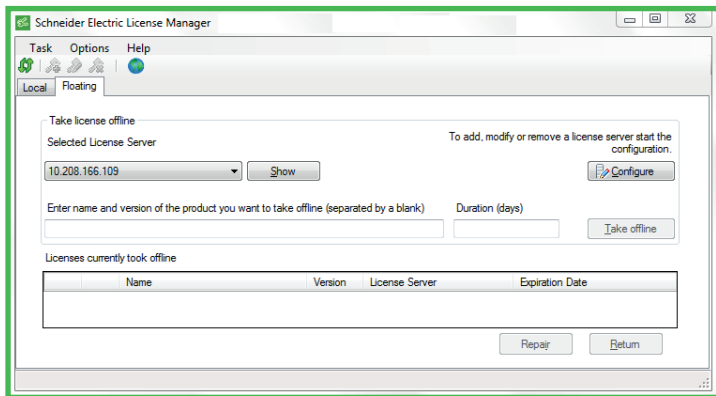


Floating License

A Floating License is activated on a **Floating License Server** (computer). The installation of Control Expert is not required on this Floating License Server.

Activation is done with the **Schneider Electric Floating License Manager tool**.

Connection to the **Floating License Server** is done with the Schneider Electric License Manager tool.



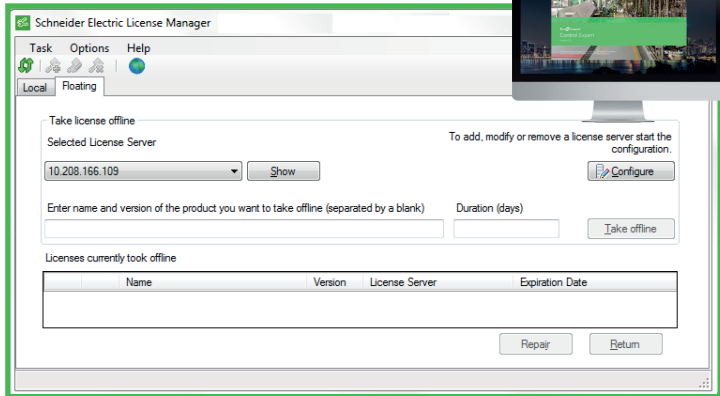
Once activated, the license will run Control Expert on any computer connected to the Floating License Server.



Floating License Usage

The License is used while Control Expert is running. When you close Control Expert, the license is released and available to other users.

In this case, you need to be connected to the Floating License Server. Configuration of the connection to the **Floating License Server** is done with **Schneider Electric License Manager**.



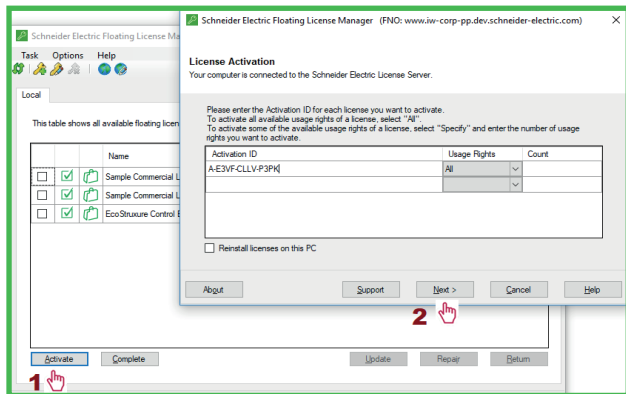
Note: The license can be taken offline locally from the Floating License Server to a computer. It then behaves as a Node-Locked License, and the computer can be disconnected from the Floating License Server.



How to Activate a Floating License

Activation is typically performed once by your license administrator on the **Floating License Server**.

Start the Schneider Electric Floating License Manager



Enter your Activation ID and finish

You received your Activation ID (either printed and sent in an envelope or sent via e-mail).

If your computer has no internet connection or is not connected to the Schneider Electric License Server, you can activate by email, phone, or smartphone.

After a few seconds, the successfully created license message appears.



Registration

Activation is mandatory, but **registration is optional**.

Registration requires you to create a Software License Portal (SLP) account.

Create your SLP account on Software Licensing Web Portal

Go to www.schneider-electric.com/licensing or directly click the globe icon  on the Schneider Electric Floating License Manager toolbar.

On the Software License Web Portal, select **Login** then click **Create new Schneider Electric Web User Account**.

Enter your email address that will be your user ID for your SLP account. Fill in the mandatory fields and validate.

Once you have created your account, log in

Your email address is your account ID.

Register the license in your account



Support - Software Licensing

You are here: Home > Support > Software Licensing > Register license into my account

Register license into my account

Software Licensing

- View my license
- Process license request file
- Register license into my account
- Software Registration Centers
- Update my profile
- Change language
- Logout

Please get the [certificate of authenticity](#) for your license.
Enter the Activation ID below:

[Register](#) [Benefits >>](#)

2 

You can register a license even if it has not yet been activated using the License Manager or Floating License Manager software.

[My licenses](#)



How to Configure the Connection to your Floating License Server

Start the Schneider Electric License Manager.
Select the **Floating** tab.

The screenshot shows the Schneider Electric License Manager interface. The main window has a 'Floating' tab selected. A 'Take license offline' section contains a 'Selected License Server' dropdown menu with '10.208.166.109' selected and a 'Show' button. To the right is a 'Configure' button. A red hand icon with the number '1' points to the 'Configure' button. Below this is a text field for product name and version, and a 'Duration (days)' field. A 'Licenses currently took offline' table is empty. An 'Enterprise License Server Configuration' dialog box is open in the foreground, showing a table of 'Available Enterprise License Servers'.

Host Name / IP Address	Vendor Daemon / License Server Port	Web Port	
10.208.166.109	27010	8090	Remove
*			Remove

A red hand icon with the number '2' points to the first row of the table.

If the connection to the Floating License Server is not yet configured, select **Configure**.

Prompt: Server IP address / Server Port and Web Port.

Select **Show** to access Floating License Server information.

Control Expert automatically retrieves the available license from this server. (Multiple servers can be configured).



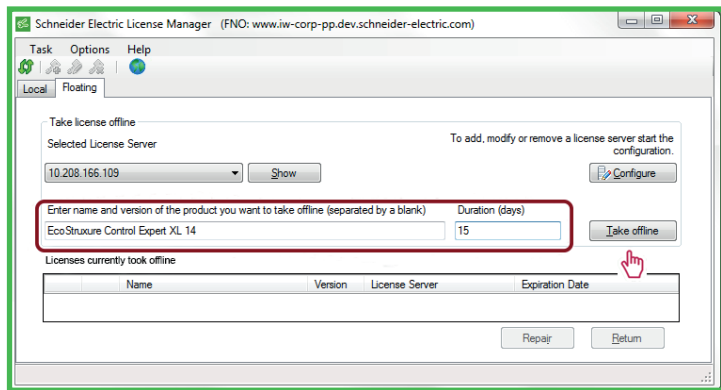
How to Take a License Offline and Return it to the Floating License Server

If you need to disconnect your computer from the Floating License Server, detach a license from the server to your computer. The license behavior is then similar to a Node-Locked License. The license is no longer available on the Floating License Server.

Take the license offline

Start the Schneider Electric License Manager.

Enter the name and version of the product you want to take offline, as well as the duration.

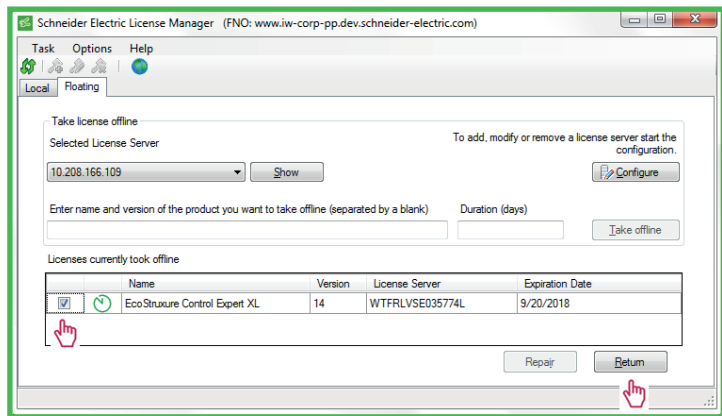


Return a license to the Floating License Server

After the duration period has elapsed, the license is automatically returned to the Server.

To return a license before the end of the duration period, start the Schneider Electric License Manager.

In the Floating tab, select the license to return and press **Return**.



That's it!



Software Registration Centers

Europe | English | 8:30 - 17:00 (CET)

☎ +420 281 088 696

✉ src-europe@schneider-electric.com

North and Central America | English | 8:00 - 17:00 (EST)

☎ +1 888 266 8705 (from US and Canada)

☎ +1 978 975 9755 (from other countries)

✉ src-americas@schneider-electric.com

South America | English | 8:30 - 17:00 (CET)

☎ +420 281 088 696

✉ src-southamerica@schneider-electric.com

Asia and Pacific | English | 9:00 - 17:00 (AEDT)

☎ +61 2 9125 8531

✉ src.asiapacific@schneider-electric.com

France | French | 8:00 - 18:00 (CET)

☎ 0825 012 999 (national)

☎ +33 492 088 268 (international)

✉ global-src-france@schneider-electric.com

Italy | Italian | 8:00 - 18:00 (CET)

☎ +39 011 407 3333

✉ it-registrazione-software@schneider-electric.com

All registration centers are open Monday to Friday.

CET = Central Europe Time = UTC + 01:00

EST = Eastern Standard Time = UTC- 05:00

AEDT = Australian Eastern Daylight Time = UTC + 10:00

UTC = Coordinated Universal Time

PHA7333801

