



RELEASE NOTES

WSOS5 version 5.16.xx

Version 02

© 2017 Schneider Electric. All Rights Reserved.

The information provided in this documentation contains general descriptions and/or technical characteristics of the performance of the products contained herein. This documentation is not intended as a substitute for and is not to be used for determining suitability or reliability of these products for specific user applications. It is the duty of any such user or integrator to perform the appropriate and complete risk analysis, evaluation and testing of the products with respect to the relevant specific application or use thereof. Neither Schneider Electric nor any of its affiliates or subsidiaries shall be responsible or liable for misuse of the information contained herein. If you have any suggestions for improvements or amendments or have found errors in this publication, please notify us.

No part of this document may be reproduced in any form or by any means, electronic or mechanical, including photocopying, without express written permission of Schneider Electric.

All pertinent state, regional, and local safety regulations must be observed when installing and using this product. For reasons of safety and to help ensure compliance with documented system data, only the manufacturer should perform repairs to components.

When devices are used for applications with technical safety requirements, the relevant instructions must be followed.

Failure to use Schneider Electric software or approved software with our hardware products may result in injury, harm, or improper operating results.

Failure to observe this information can result in injury or equipment damage.

© 2017 Schneider Electric. All Rights Reserved.

TABLE OF CONTENTS

Appendix A: Terminology/Glossary/Definitions list.....	5
1. INTRODUCTION	6
2. RELEASE DETAILS – VERSION 5.16.XX	6
2.1 Support for Windows 10.....	6
2.2 Configuring the ADV3 controller	6
2.3 New USB Driver.....	6
3. USING THIS RELEASE	7
3.1 Installing version 5.16.xx	7
3.2 New Configuration for the ADV3 Controller	7
3.3 Upgrading an existing ADV2 configuration to ADV3.....	10

Revision History

Name	Date	Reason For Changes	Version
Sandeep Sundaram	30/06/2017	Initial Release	1.0
Sandeep Sundaram	07/07/2017	Minor updates	2.0
Shweta Herlekar	11/07/2017	Updated after review	3.0

Appendix A: Terminology/Glossary/Definitions list

Abbreviation / Acronym / Special Term	Definition
WSOS	Windows Switchgear Operating System
ADVC	Advanced Controller
CAPE	Control and Protection Enclosure

1. Introduction

WSOS 5 is a state-of-the-art switchgear operating system software. Version 5 integrates the field proven WSOS and its powerful features and tools, developed over many years, into your Microsoft Windows® desktop.

With Switchgear Explorer, you organise your switchgear the way you want and Launch Pad provides handy links to online help, getting started, updates and more.

2. Release details – version 5.16.xx

Version 5.16.xx is a major release version for the Windows Switchgear Operating System. This release features the following:

- Support for Microsoft Windows 10
- Support for configuring the ADVC3 controller – firmware version A50-01.xx
- New USB drivers to facilitate communication between the Windows PC and the ADVC controller

2.1 Support for Windows 10

Release version 5.16.xx of the Windows Switchgear Operating System allows the users to install and run the engineering tool on Microsoft Windows® 10 operation system, which was not possible with the previous WSOS version 5.15.xx.

There is no change to the installation process. Double clicking on the installer and following the instructions on the installation wizard screen will guide the user as required.

The same version can be installed on Microsoft Windows 7 or Microsoft Windows 8 Operating systems as well.

NOTE: versions 5.16.00 - 5.16.04 cannot be installed on Microsoft Windows XP. If you need an installation for Windows XP, Schneider Electric suggests using version 5.16.06+, which can be installed and used on Windows XP, but does not support USB based communications to the ADVC controller range. Instead the Ethernet or Serial ports could be used to communicate with the controller.

2.2 Configuring the ADVC3 controller

Starting with release version 5.16.xx, WSOS can be used to configure the ADVC3 controller. The ADVC3 controller is a new Recloser controller offer from Schneider Electric, which will supersede the ADVC2 controller. The ADVC3 controller is completely backwards-compatible with the full Schneider Electric overhead switchgear range. Please see section 3.3 on how to upgrade an existing ADVC2 configuration for use with the ADVC3 controller.

2.3 New USB Driver

To support the USB 2.0 device on the ADVC3 controller, version 5.16.xx of WSOS installs a new USB driver to facilitate the communication between the PC running WSOS5 and the ADVC3 controller. This driver is backwards compatible with the ADVC2 and the ADVC Lite controller ranges.

NOTE: The new USB driver is not compatible with the Microsoft Windows XP operating system and hence will not be installed. Please consider using an alternate port for communications in this case. After WSOS5.16.06+ has been installed on a computer running Microsoft XP, connecting to an ADVC2 or ADVC3 controller via USB will prompt a 'found new

hardware' message on your laptop – selecting next will display 'Cannot install this Hardware' – select the Finish button to complete and exit from the USB driver install; WSOS5 will be available for connection on all ports except USB.

3. Using this release

The following sections describe the procedures to be followed to use WSOS5 version 5.16.xx.

3.1 Installing version 5.16.xx

If this is the first time that WSOS5 is going to be installed on the PC, then this section can be skipped.

To upgrade WSOS5 to latest version Run to execute the installation file and follow the instructions in the install wizard

3.2 New Configuration for the ADVC3 Controller

Once installed, the WSOS5 version 5.16.xx can be used to create a configuration for the ADVC3 controller. The differentiation is based on the firmware version that is selected when creating the configuration file. The below table shows the currently supported versions and the corresponding ADVC controller offer:

Platform	Firmware version	Controller Range
ADVC Controller Range	44-XX.XX	ADVC2
	45-XX.XX	ADVC2
	50-XX.XX	ADVC3

A new configuration can be created automatically, by ensuring that the PC is connected to the ADVC3 controller, and the controller is powered up. In this case, the user can choose to create the configuration by reading the settings from the controller. To do so, the user will need to select either the Serial (Comm) Port, the USB port or enter the IP address of the controller that is connected. Clicking on the 'Next' button should create the switchgear configuration based on the settings in the controller.

The other method is to create the configuration manually. To do so, please follow the steps given below:

1. Select the ADVC Controller Range (default) under the Platform selection
2. Select the Operator Interface based on the interface that is fitted
3. Select '50' from the Firmware version drop down menu
4. Complete the firmware version number as shown in Figure 1
5. Click the Next button

Figure 1: Manual ADVC3 configuration creation

After following the instructions, a summary page, as shown in Figure 2 below will be displayed. Check that the version number listed is correct and then click on the Finish button. This will create a new switchgear configuration file for the ADVC3 controller, which can then be modified suitably and written to the ADVC controller.

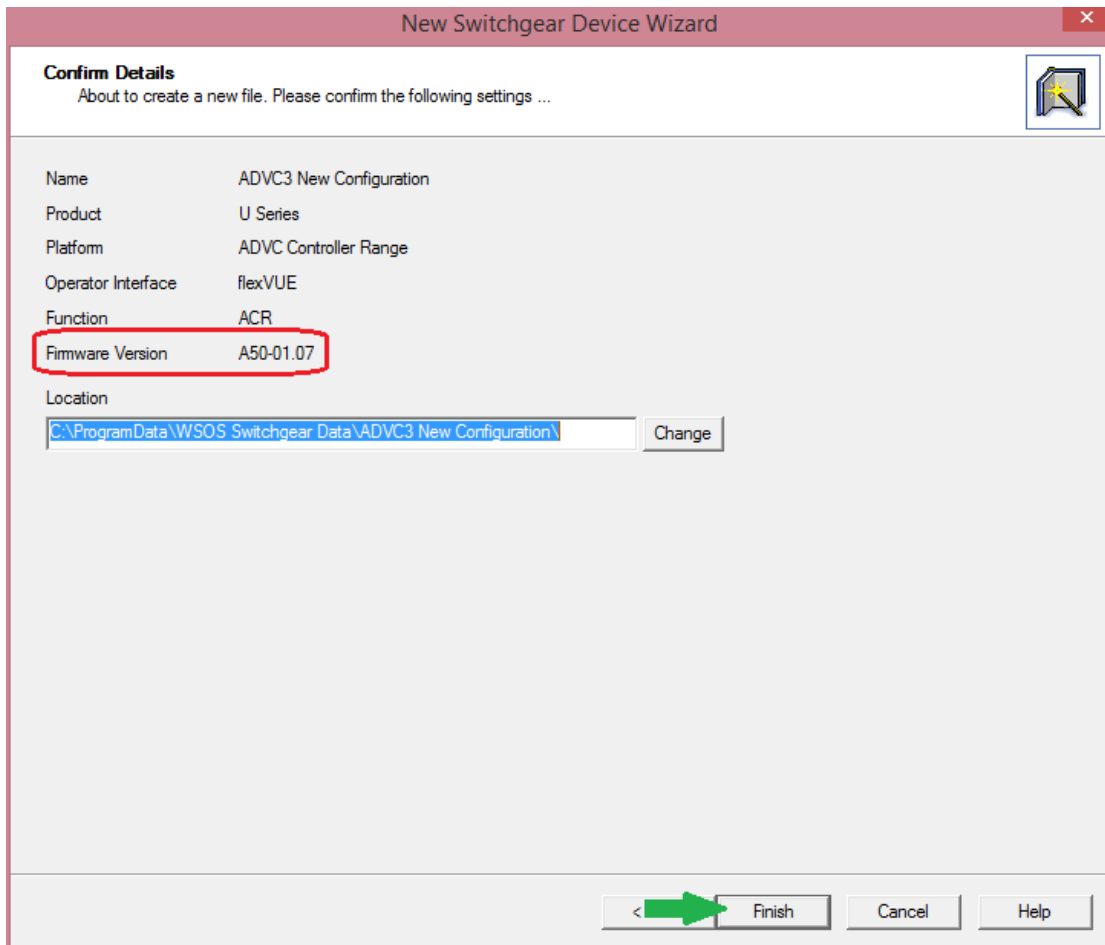


Figure 2: ADVC3 Creation summary

3.3 Upgrading an existing ADVC2 configuration to ADVC3

With WSOS5 version 5.16.xx, it is possible to 'upgrade' an existing switchgear configuration for ADVC2, to be used with the ADVC3 controller. This can be achieved by following the steps listed below.

1. Select an existing ADVC2 configuration file in WSOS and set it to be the active configuration. Figure 3 shows an example of an ADVC2 configuration, that was created for version A45-51.03

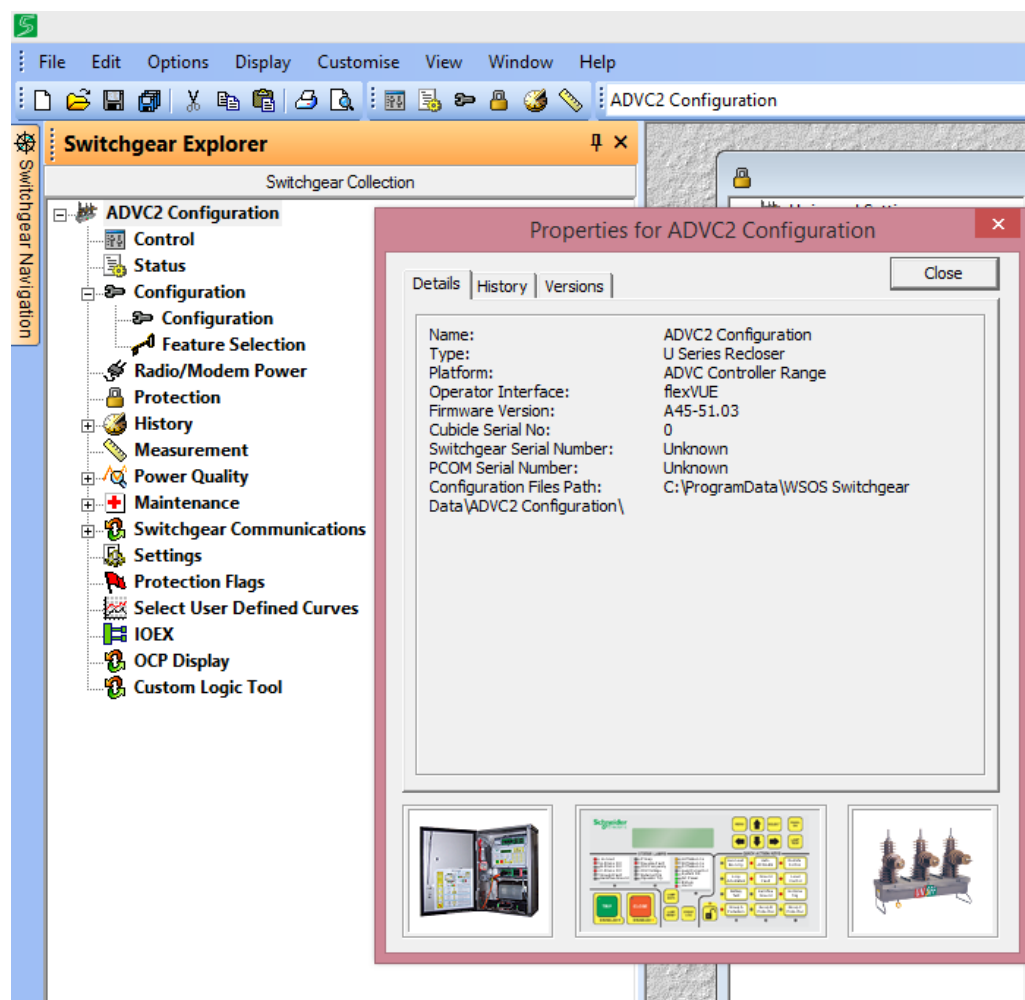


Figure 3: Existing ADVC2 configuration (version A45-51.03)

2. Once this is selected, navigate through the Options menu in WSOS, and select 'Upgrade A40+ To A50+' in the resulting drop down menu, as shown in Figure 4.

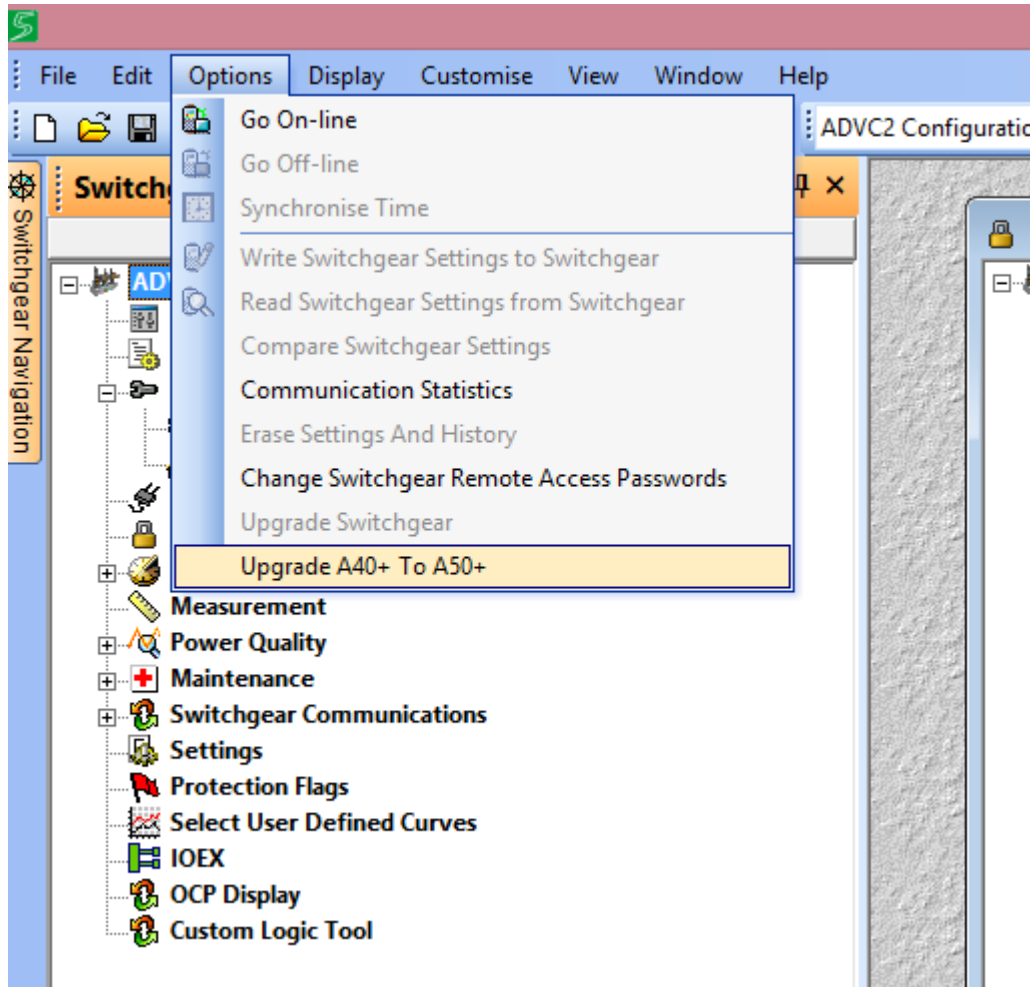


Figure 4: Upgrade to version 50

3. Clicking this will result in a dialog box, shown in Figure 5, where in the user can enter a new name to save the resulting upgraded configuration. By default, the strings “- Upgraded” is appended to the original ADVC2 configuration file name. This ensures that the original configuration is not overwritten.

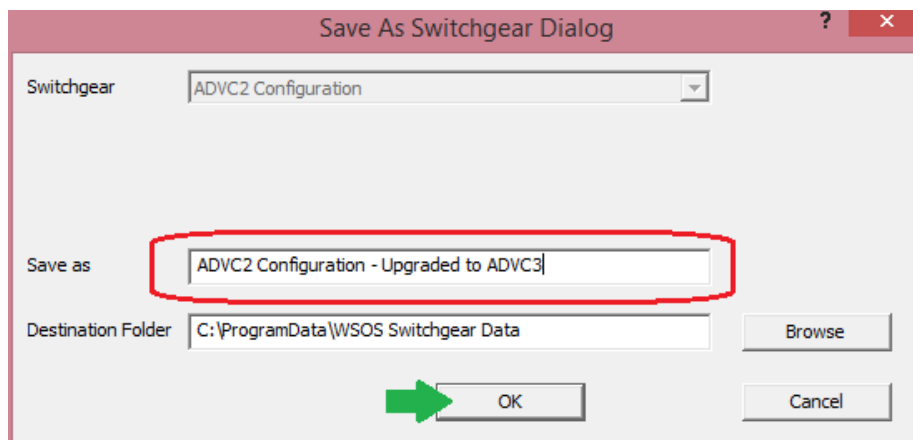


Figure 5: ADVC3 configuration name

- Once the new configuration name is entered, click on the OK button. This will then create a new configuration, based on the name provided, as shown in Figure 6. Click on the OK button in the confirmation dialog that is displayed.

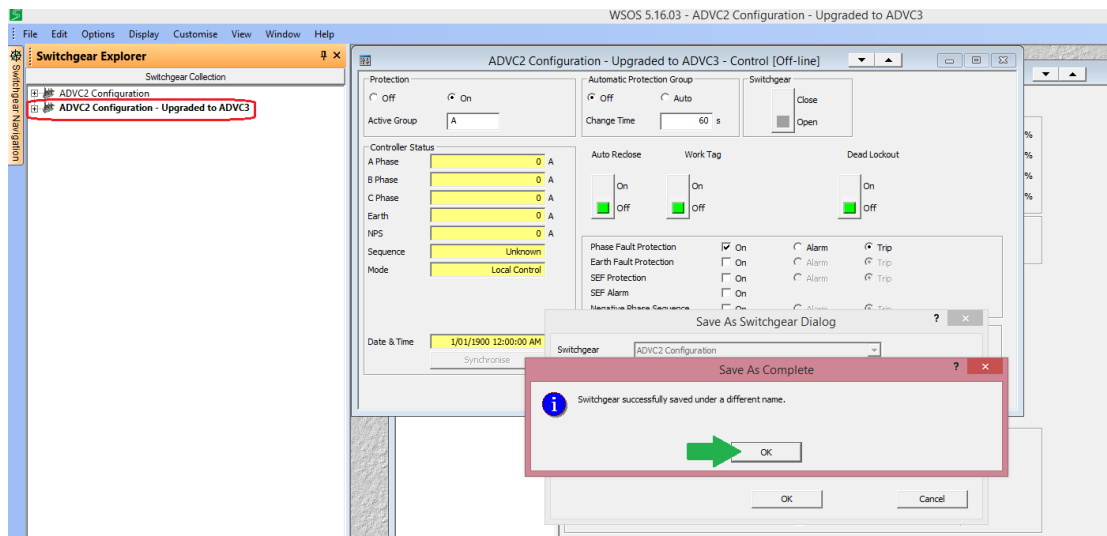


Figure 6: New ADVC3 configuration saved

- WSOS5 will now examine the Ports configuration from the ADVC2 configuration, and try to remap these to correspond to the new ports available with the ADVC3 controller.
- If WSOS is unable to map these automatically, then the dialog shown in Figure 7 is displayed. There is an indication provided to show the conflicting port configuration.

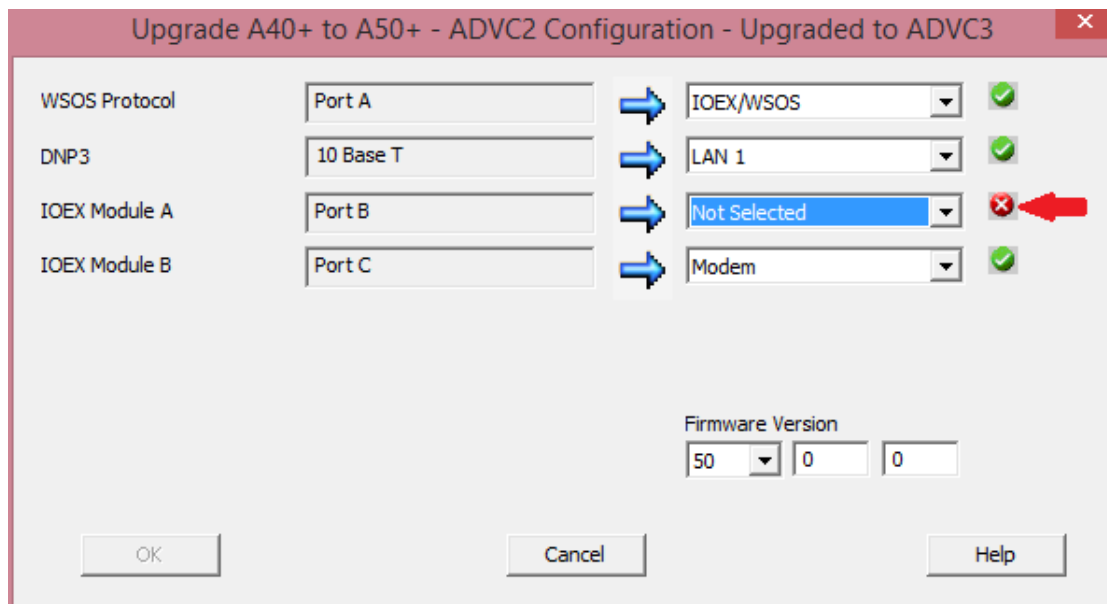


Figure 7: Port reconfiguration - conflict

- The user can then choose an appropriate port for the protocol, by selecting one of the available ports from the drop-down menu, as shown in Figure 8. It is also possible to change the port selections for the other protocols, which were automatically assigned during the configuration upgrade.

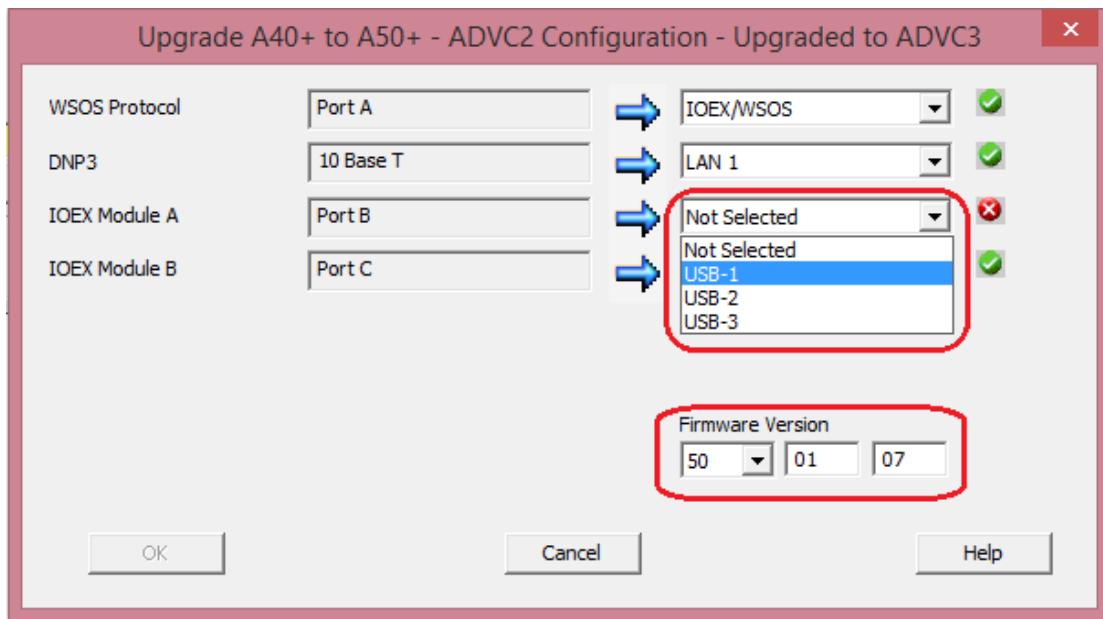


Figure 8: New port selection

8. Once the selections are made, the right firmware version number needs to be entered. This version number should match the firmware version loaded in the controller.
9. The user can then click on the OK button to confirm the Port selection and complete the configuration upgrade process.

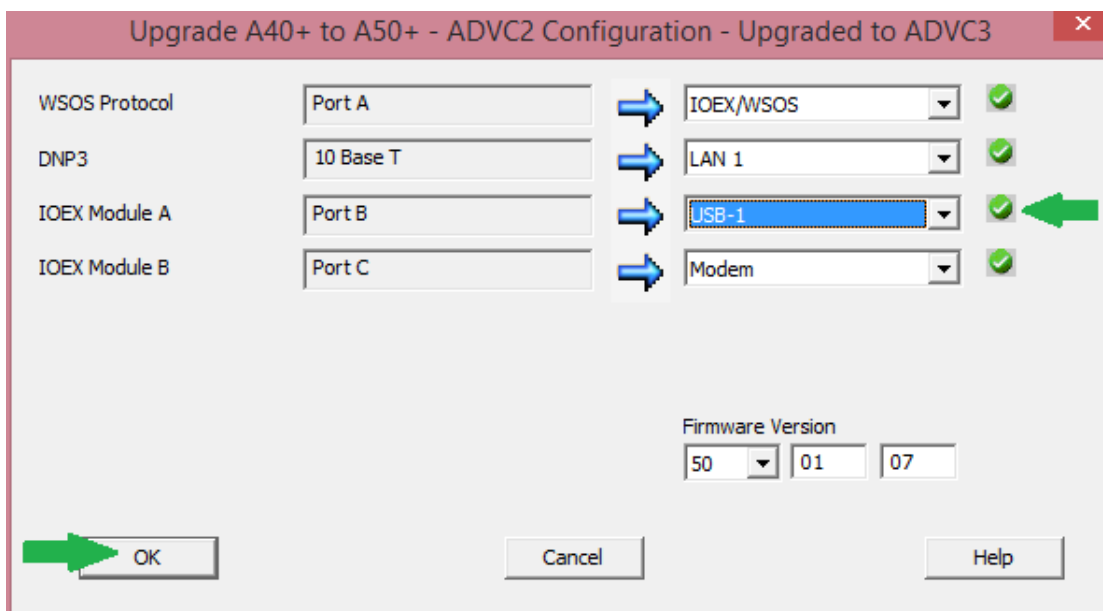


Figure 9: Confirm Port Selection

10. On confirmation, the new configuration file will be saved for the ADVC3 controller, as shown in Figure 10. This is now ready to be written to the controller.
11. If there are maps in the ADVC2 configuration, the same will be made available in the ADVC3 configuration as well and will need to be written to the controller.

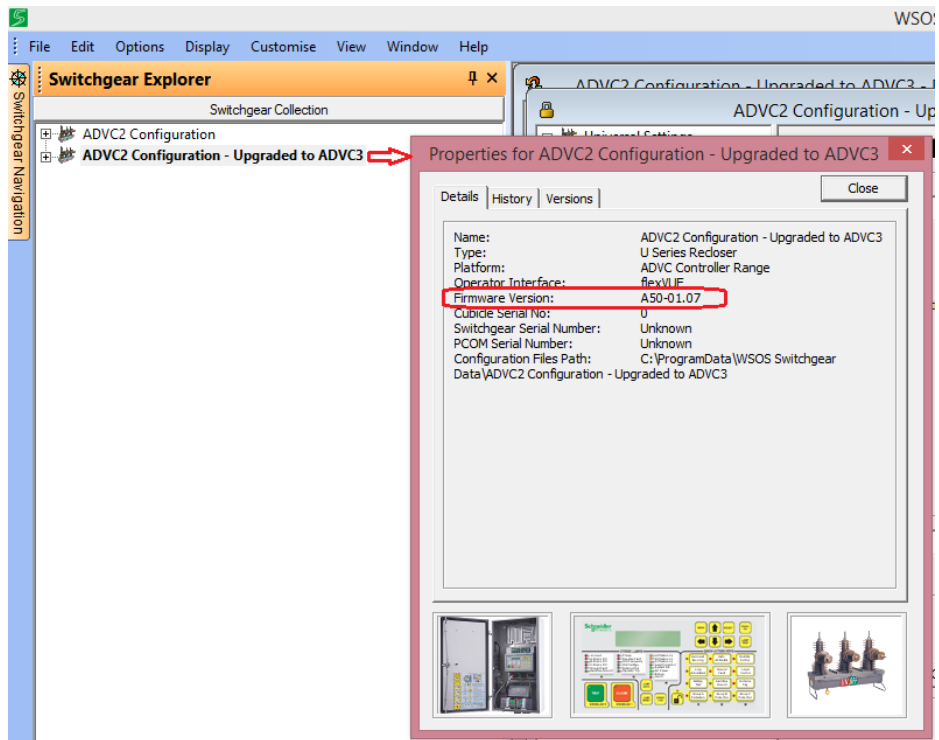


Figure 10: Upgraded Configuration