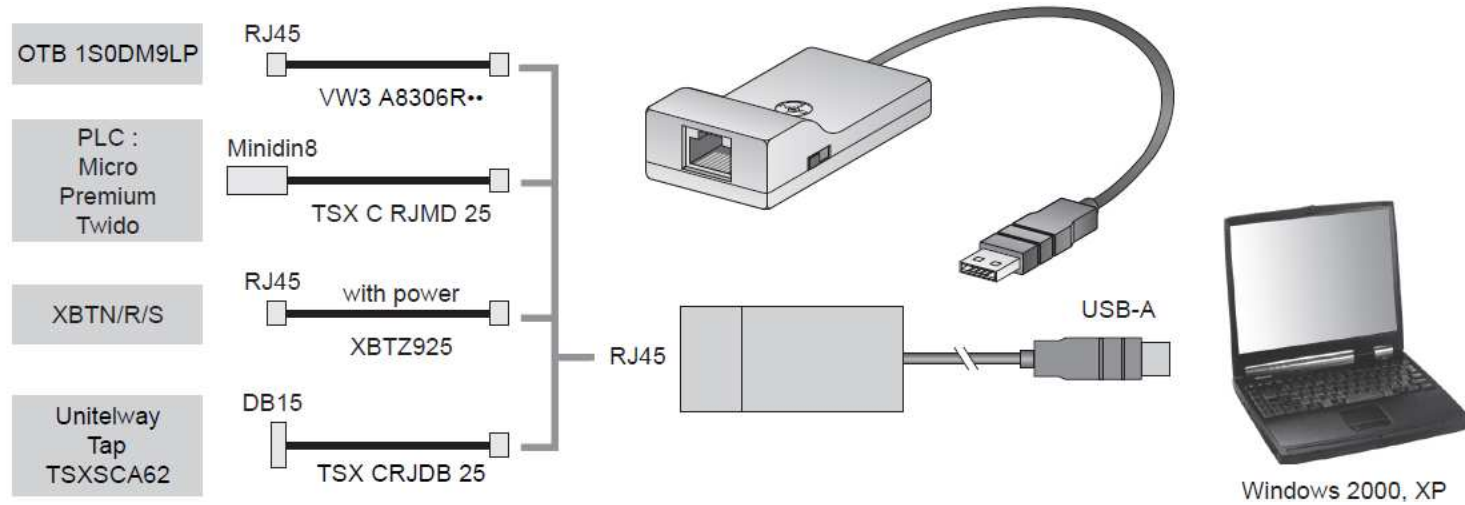


Unitelway Driver


Exemplo de configuração do Unitelway Driver para comunicação com Magelis XBTN/R/RT e Modicon TSX Micro e Premium.

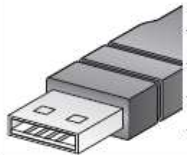
Unitelway Driver

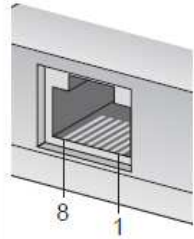
• Cabos:



The different serial mode functions are defined according to the rotary switch position:

	Position	Function - Connection type	NDE	PMC
	0	TER MULTI - Multipoint mode.	Unused	NC
	1	OTHER MULTI - Multipoint mode. Other types of communication	Unused	0 V
	2	TER DIRECT - Point-to-point mode	Used	NC
	3	OTHER DIRECT - Point-to-point mode. Other types of communication (e.g. Modbus, ASCII)	Used	0 V

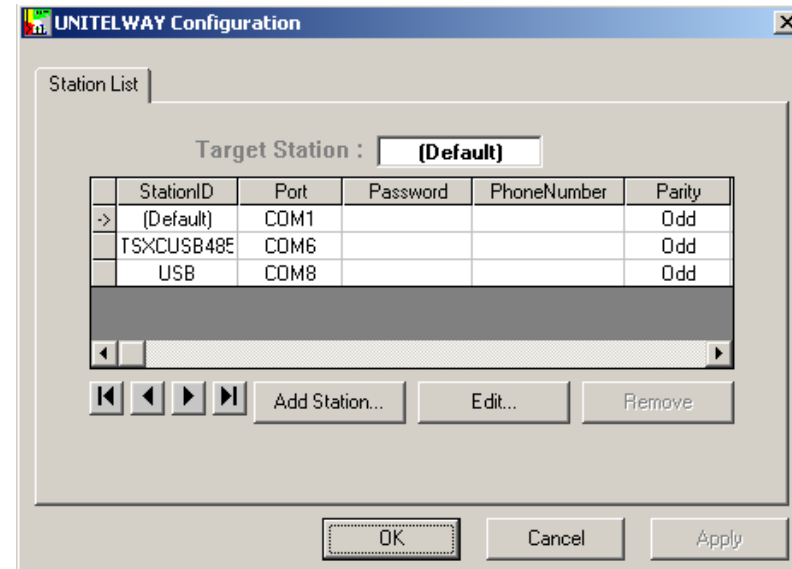
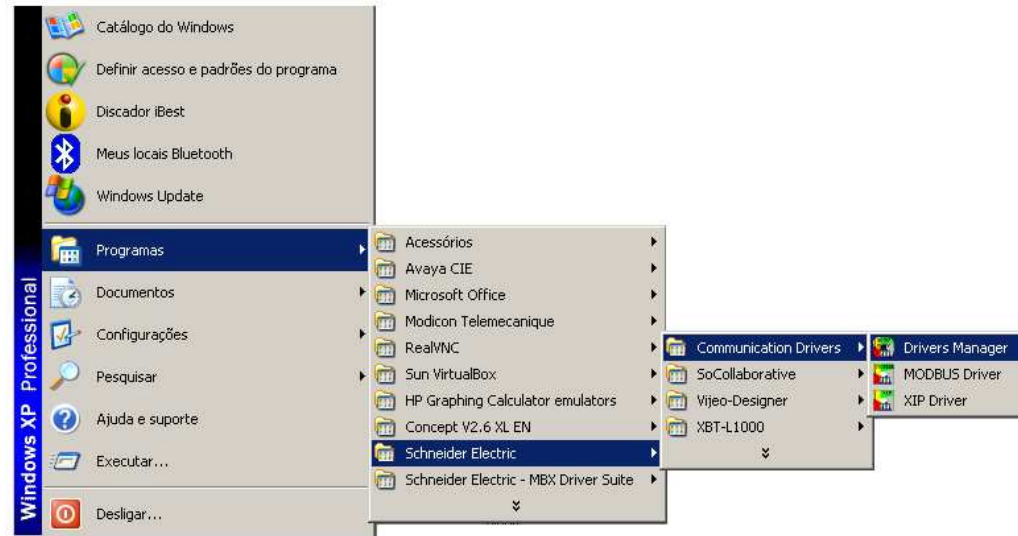
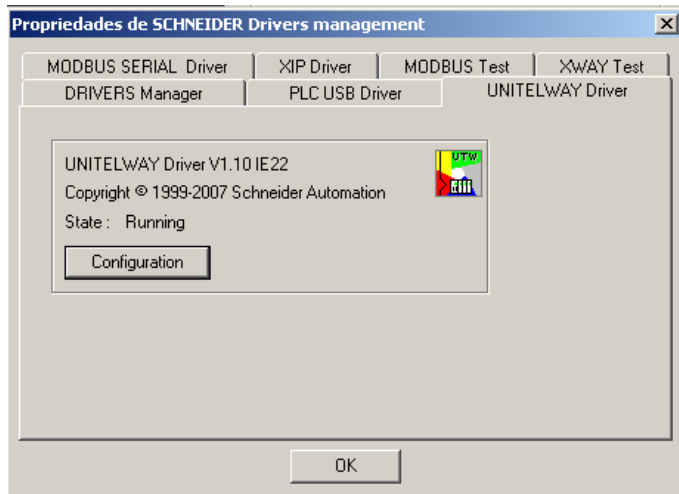
	USB-A
	1 VBUS (+5V)
	2 Data (D-)
	3 Data (D+)
	4 U-GND

	RJ45		
	1	N.C.	
	2	N.C.	
	3	PMC	Port Mode Control
	4	D1 (B)	Transceiver Terminal 1
	5	D0 (A)	Transceiver Terminal 0
	6	NDE	RS485 Driver Enable (INPUT)
	7	VP (OUT)	Power Supply (5V, 500 mA max)
	8	Common	Signal and power supply Common

Unitelway Driver

- Configuração do Driver:

Local de instalação padrão:



Verificar a porta **COM** correspondente à instalação do cabo no Gerenciador de dispositivos.

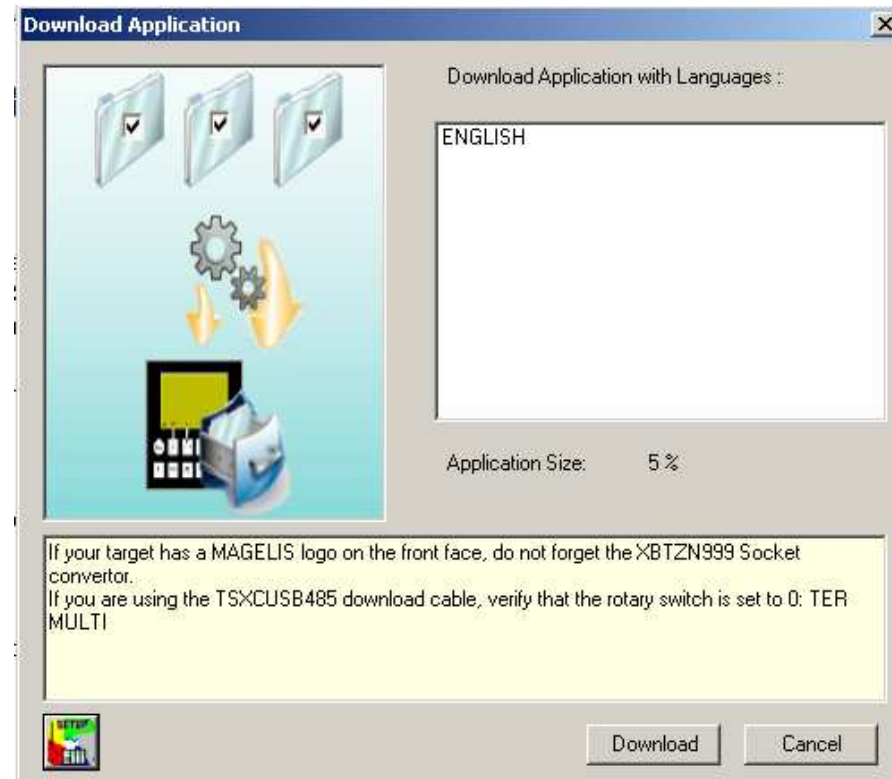
Unitelway Driver

- Vijeo-Designer Lite:



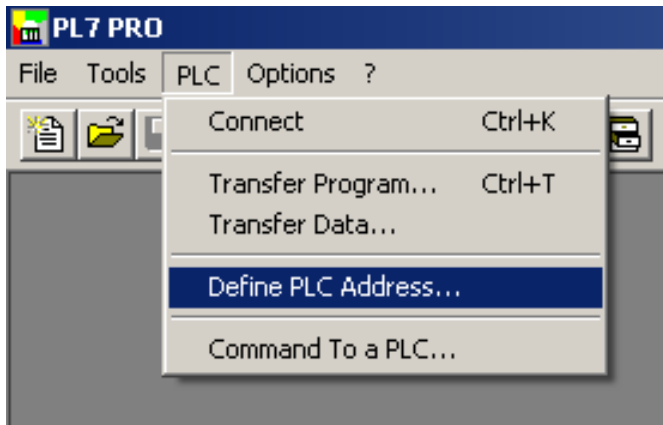
Observações:

- Utilizar a chave rotatória na posição 0 (TER MULTI);
- No cabo XBTZ925(A) utilize a ponta número 1 conectada ao TSXCUSB485 e a ponta número 2 na Magelis (XBTN200/N400/R400).



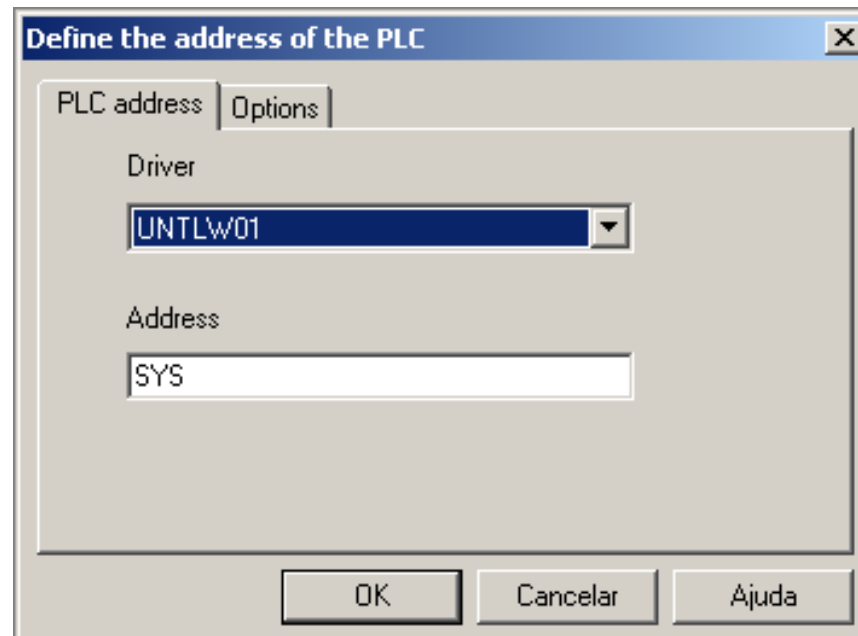
Unitelway Driver

- PL7:



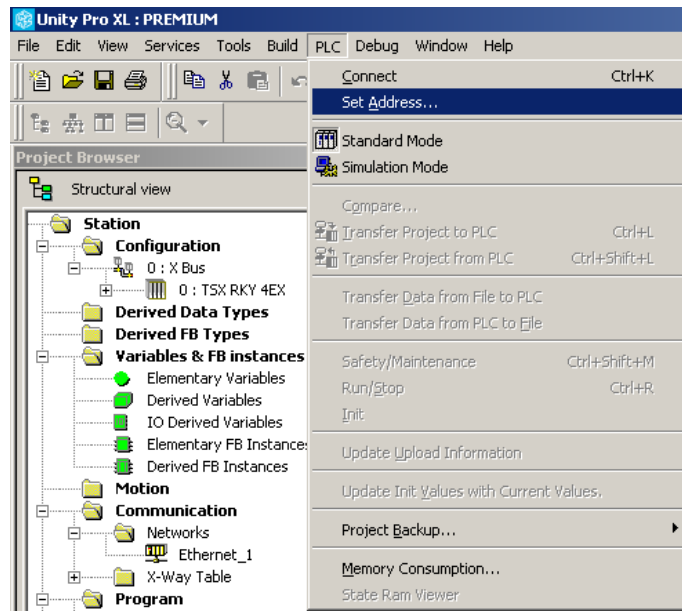
Observação:

- Utilizar a chave rotatória na posição 2 (TER DIRECT);



Unitelway Driver

- UnityPro:



Observação:

➤ Utilizar a chave rotatória na posição 2 (TER DIRECT);

