

**ATV6xx + VW3A3609 with Allen Bradley PLC**

**DeviceNet – Explicite MSG**

**05-2024**

## 1. Introduction

We can read any drive's parameter using **messaging requests** which are triggered by PLC program.

Drive's parameters are published with their logical addresses and their **DeviceNet path** written in a format: **Class/Instance/Attribute**

*Par ex.:*

ACC (acceleration) - DeviceNet path = 16#8E/01/02

where: **Class=8E, Instance=01, Attribute=02** [Hex]

**DeviceNet path** is common for DeviceNet and Ethernet/IP addressing system.

To send a messaging request from AB PLC, we need a **MSG** function block from **Input/Output** family.

## 2. Prerequisite's

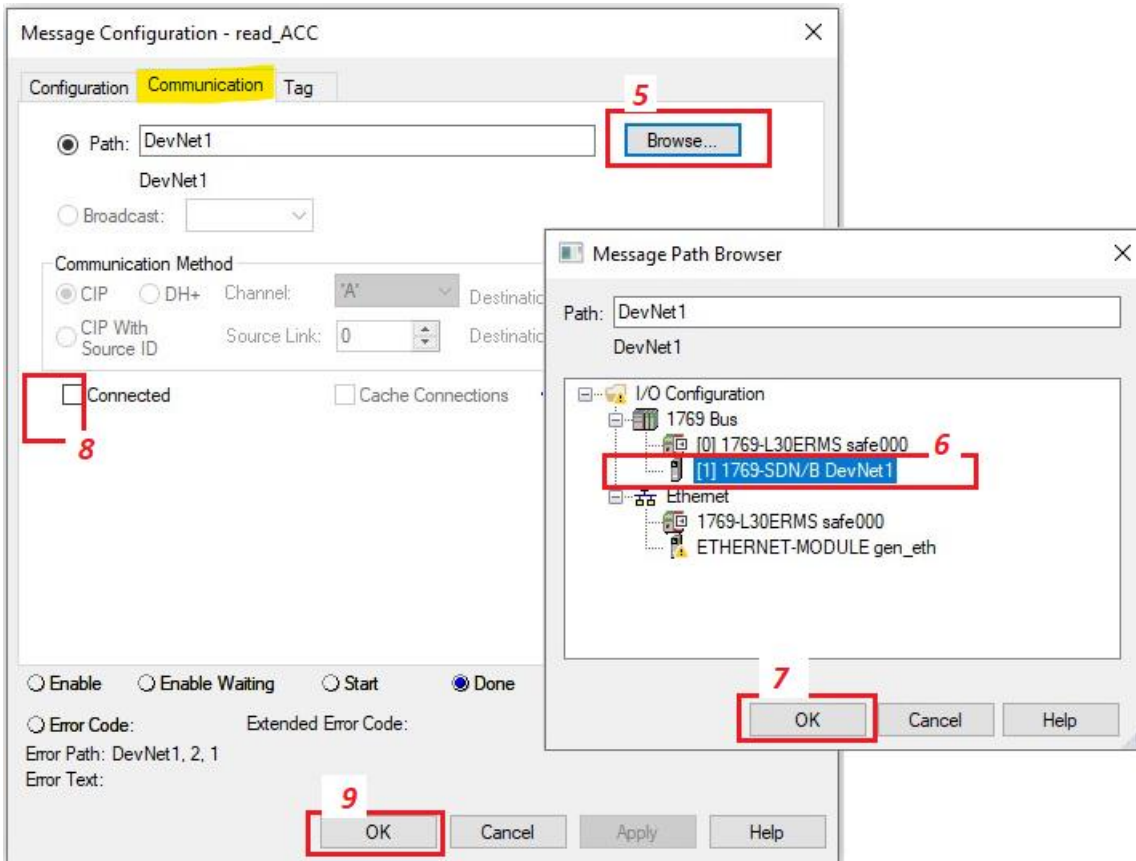
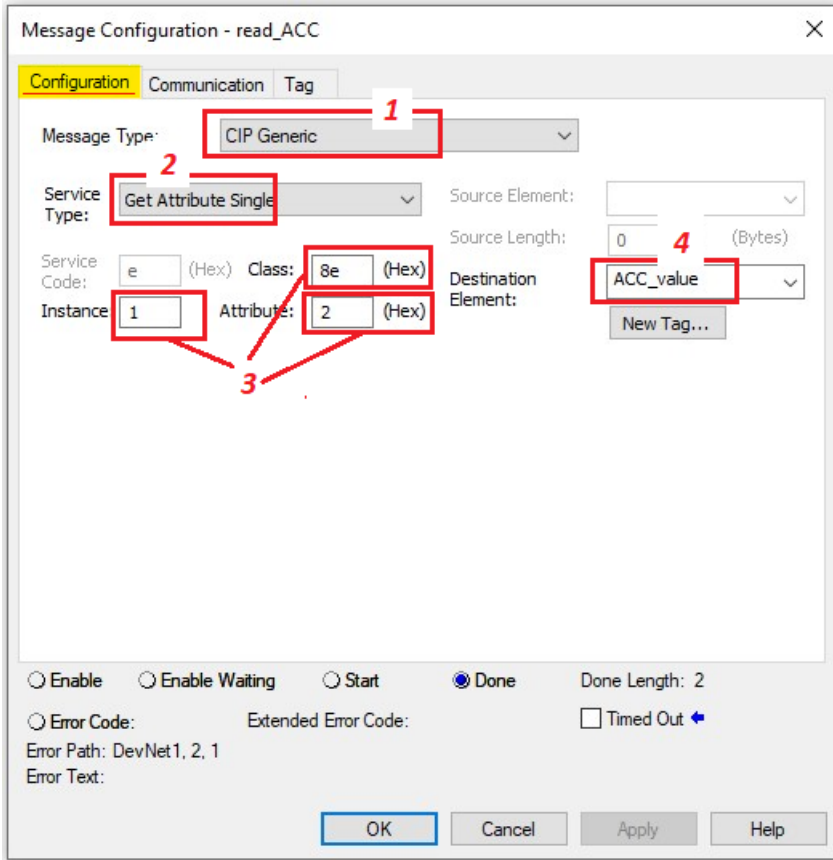
ATV6xx + VW3A3609 must be correctly configured by Rockwell's *Studio 5000 + RSXNetWorx for DeviceNet* and working.

## 3. Example

**read1** (Bool) tag will trigger **read\_ACC** (instance of MSG) for reading ACC (acceleration), result stored in **ACC\_value** (INT)



# MSG read\_ACC configuration :

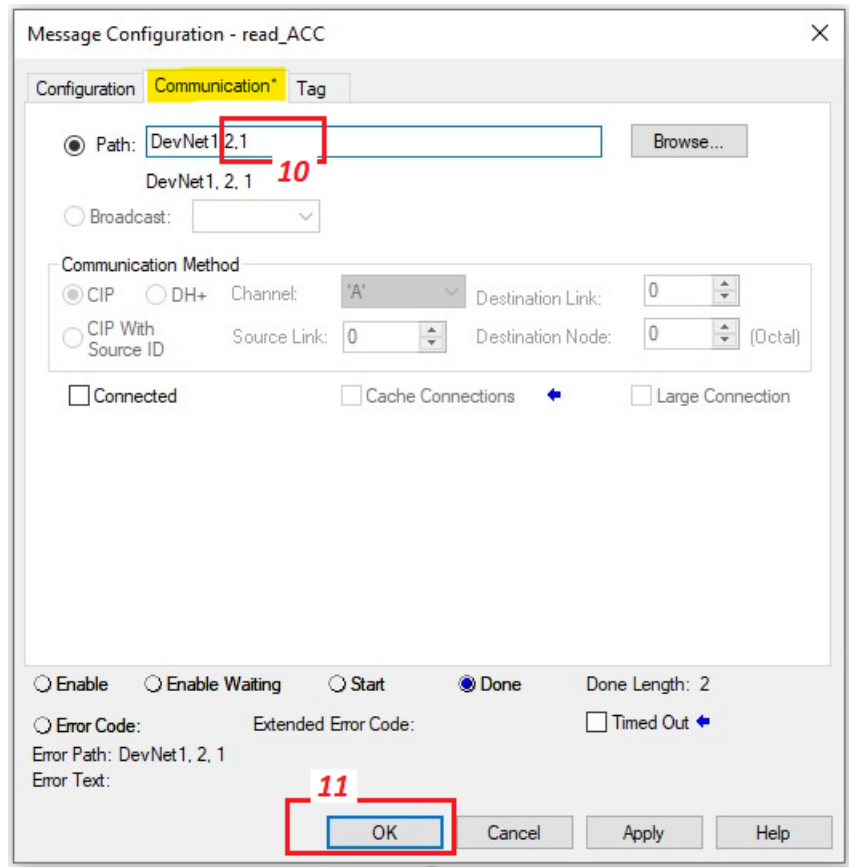


Manually edit the Path – add suffixes, separated by comma's

2 – DeviceNet communication port

1 – DeviceNet address of the ATV6xx

RESULT: *DevNet 1,2,1*



Build program, download to the PLC, and check it:

